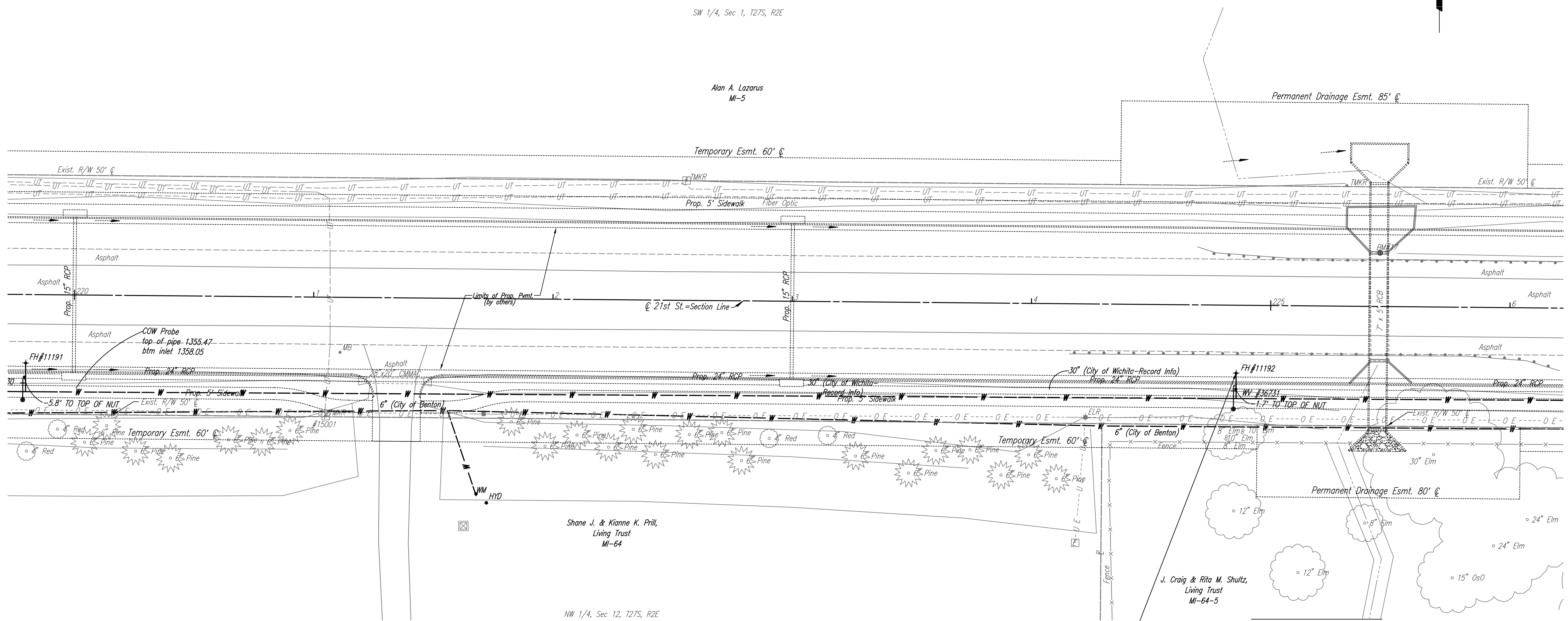


Scale: 1"=20'

SW 1/4, Sec 1, T27S, R2E

Alan A. Lazarus  
MI-5



Shane J. & Kianne K. Prill,  
Living Trust  
MI-64

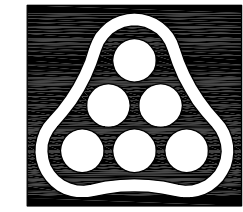
NW 1/4, Sec 12, T27S, R2E

N: 1,700,001.3717, E: 1,698,993.8490  
@ 21st St. N., Sta. 224+85.76, 28.4' Rt.  
FH RELOCATION NO. 5  
See Detail Sheet No. B39

**UTILITIES**

- Power Westar Energy
- Telephone AT&T
- Water Wichita Water Utilities
- Water City of Benton

BM #17 Chis. "a" Center N. headwall RCBC under 21st St. N., just W. of S 1/4 cor., Sec. 1-T27S-R2E. 22.41' Lt. Sta. 225+45.52 Elev. 1361.18



No.	Revision	By	Date
21ST STREET N. - FROM K-96 TO 159TH STREET E. WATERLINE ADJUSTMENTS			
STA. 220+00 TO STA. 226+00			
JAMES L. ARMOUR, P.E. - CITY ENGINEER CITY OF WICHITA PROJECT NO. 448-90380			
<b>Professional Engineering Consultants, P.A.</b> 303 S. TOPEKA • WICHITA, KANSAS 67202 316-262-2691 • FAX 316-262-3003			
Designed by	MDK	Job No.	35-01616-002
Drawn by		Date	JANUARY 2003
			Sht. B20 of 40

Saved 08-14-2008 8:45:58 AM by CSL  
Q:\2007\01616\002\bw220