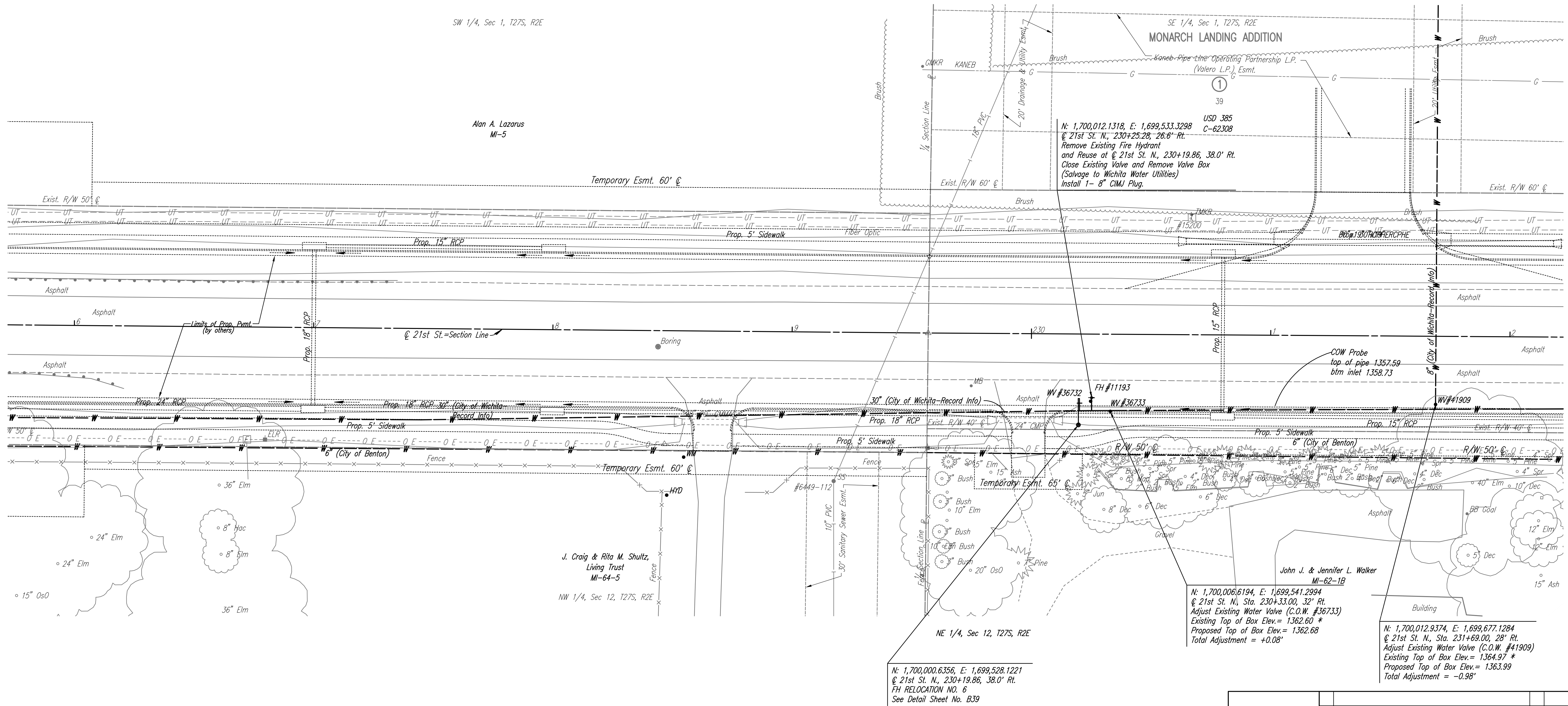


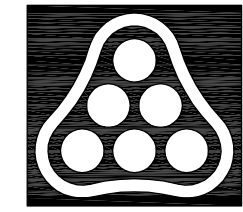
S 1/4 Cor., Sec. 1, T27S, R2E (213)
 1. Found 3/4" Iron Pipe with Moehring Cap over Exist. Cor.
 2. West End of CMP. 46.32' SE
 3. 3 Nails in HLP. 48.19' S

Scale: 1"=20'



- UTILITIES**
- Gas KANEBC
 - Power Westar Energy
 - San. Sewer Wichita Water Utilities
 - Telephone AT&T
 - Water Wichita Water Utilities
 - Water City of Benton

* EXISTING ELEVATION IS FROM RECORD INFORMATION. CONTRACTOR SHALL VERIFY ACTUAL TOP OF VALVE BOX ELEVATION.



No.	Revision	By	Date
21ST STREET N. - FROM K-96 TO 159TH STREET E. WATERLINE ADJUSTMENTS STA. 226+00 TO STA. 232+00 JAMES L. ARMOUR, P.E. - CITY ENGINEER CITY OF WICHITA PROJECT NO. 448-90380 Professional Engineering Consultants, P.A. 303 S. TOPEKA • WICHITA, KANSAS 67202 316-262-2691 • FAX 316-262-3003			
Designed by	MDK	Job No.	35-01616-002
Drawn by		Date	JANUARY 2003
			Sht. B21 of 40

Saved: 08-14-2008 8:47:28 AM by CSL
 Q:\2007\01616\002\042.dwg