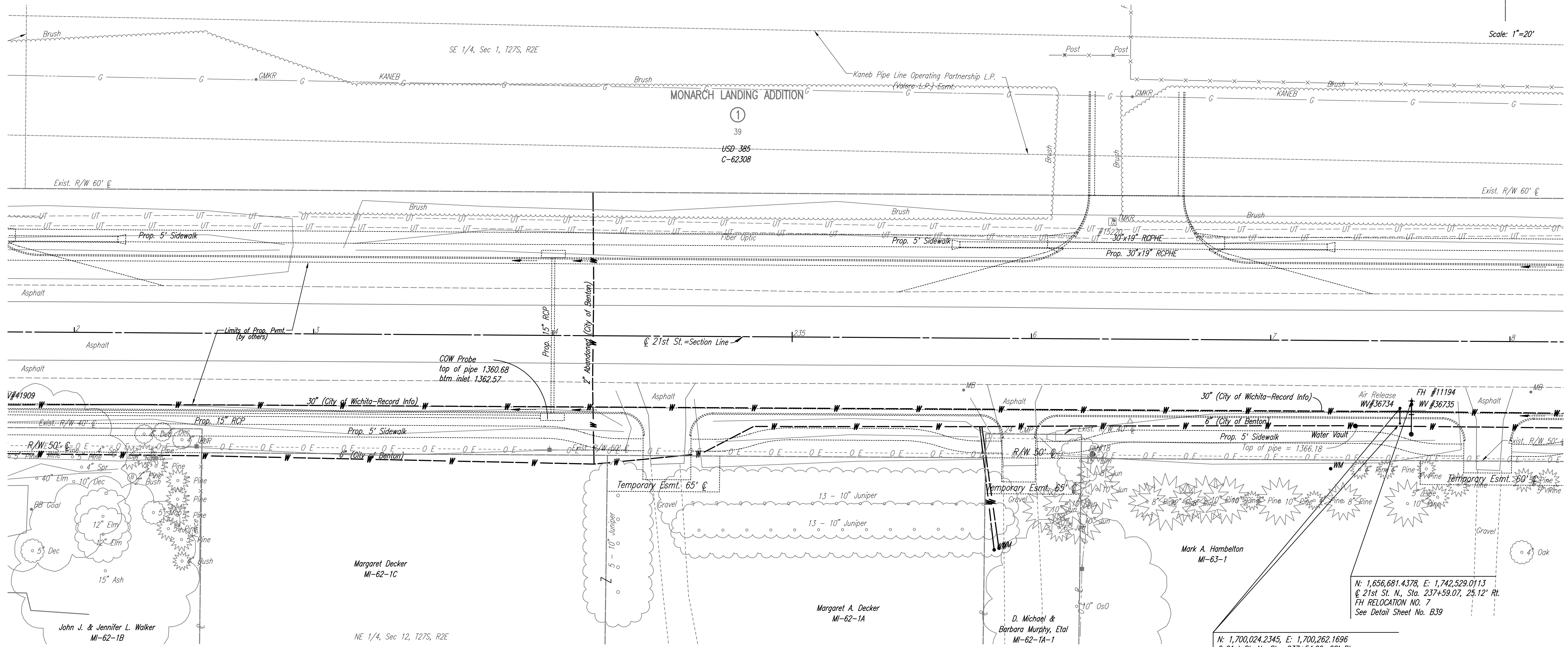


Scale: 1"=20'



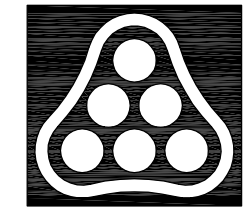
- UTILITIES**
- Gas KANEb
 - Power Westar Energy
 - Telephone AT&T
 - Water Wichita Water Utilities
 - Water City of Benton

N: 1,700,024.2345, E: 1,700,262.1696
 @ 21st St. N., Sta. 237+54.00, 28' Rt.
 Relocate Existing Air Release Valve (C.O.W. #36734)
 See Detail Sheet No. B40

N: 1,656,681.4378, E: 1,742,529.0113
 @ 21st St. N., Sta. 237+59.07, 25.12' Rt.
 FH RELOCATION NO. 7
 See Detail Sheet No. B39

* EXISTING ELEVATION IS FROM RECORD INFORMATION. CONTRACTOR SHALL VERIFY ACTUAL TOP OF VALVE BOX ELEVATION.

EM #18 RR spike in N face Power Pole, S side 21st St. N. just E of Ho. No. 15511 drive.
 00' Lt. Sta. 000+00 Elev. 1372.00



No.	Revision	By	Date
21ST STREET N. - FROM K-96 TO 159TH STREET E. WATERLINE ADJUSTMENTS STA. 232+00 TO STA. 238+00 JAMES L. ARMOUR, P.E. - CITY ENGINEER CITY OF WICHITA PROJECT NO. 448-90380 Professional Engineering Consultants, P.A. 303 S. TOPKA • WICHITA, KANSAS 67202 316-262-2691 • FAX 316-262-3003			
Designed by	MDK	Job No.	35-01616-002
Drawn by		Date	JANUARY 2003
			Sht. B22 of 40

Saved 08-14-2008 8:48:38 AM by CSL
 G:\2007\01616\002\br232