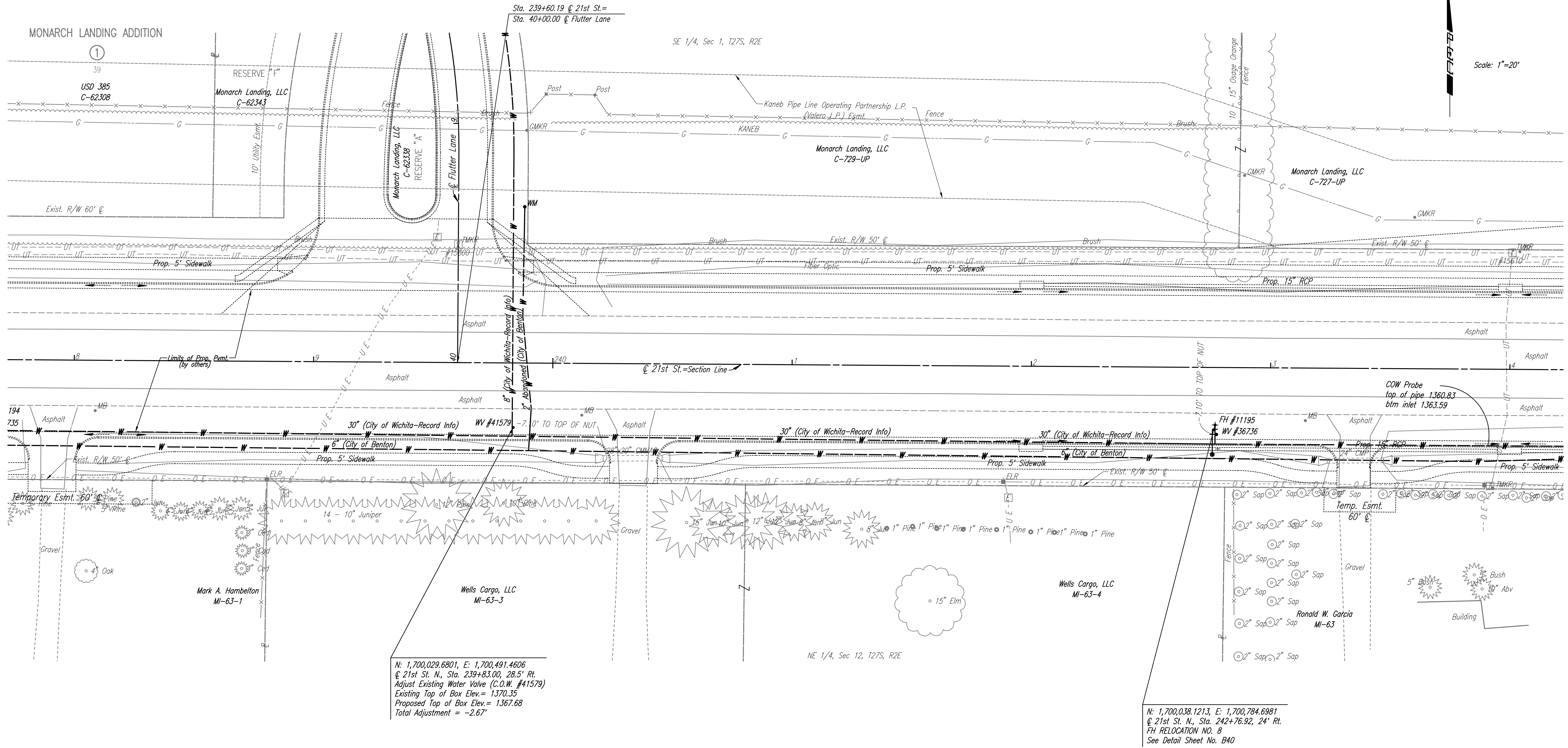


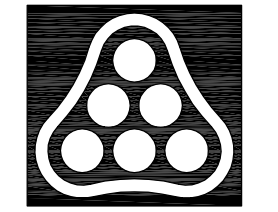
MONARCH LANDING ADDITION



N: 1,700,029.6801, E: 1,700,491.4606
 @ 21st St. N., Sta. 239+83.00, 28.5' Rt.
 Adjust Existing Water Valve (C.O.W. #41579)
 Existing Top of Box Elev. = 1370.35
 Proposed Top of Box Elev. = 1367.68
 Total Adjustment = -2.67'

N: 1,700,038.1213, E: 1,700,784.6981
 @ 21st St. N., Sta. 242+76.92, 24' Rt.
 FH RELOCATION NO. 8
 See Detail Sheet No. B40

- UTILITIES**
- Gas KANE
 - Power Westar Energy
 - Telephone AT&T
 - Water Wichita Water Utilities
 - Water City of Benton



No.	Revision	By	Date
21ST STREET N. - FROM K-96 TO 159TH STREET E. WATERLINE ADJUSTMENTS STA. 238+00 TO STA. 244+00 JAMES L. ARMOUR, P.E. - CITY ENGINEER CITY OF WICHITA PROJECT NO. 448-90380 Professional Engineering Consultants, P.A. 303 S. TOPEKA • WICHITA, KANSAS 67202 316-262-2691 • FAX 316-262-3003			
Designed by	MDK	Job No.	35-01616-002
Drawn by		Date	JANUARY 2003
			Sht. B23 of 40