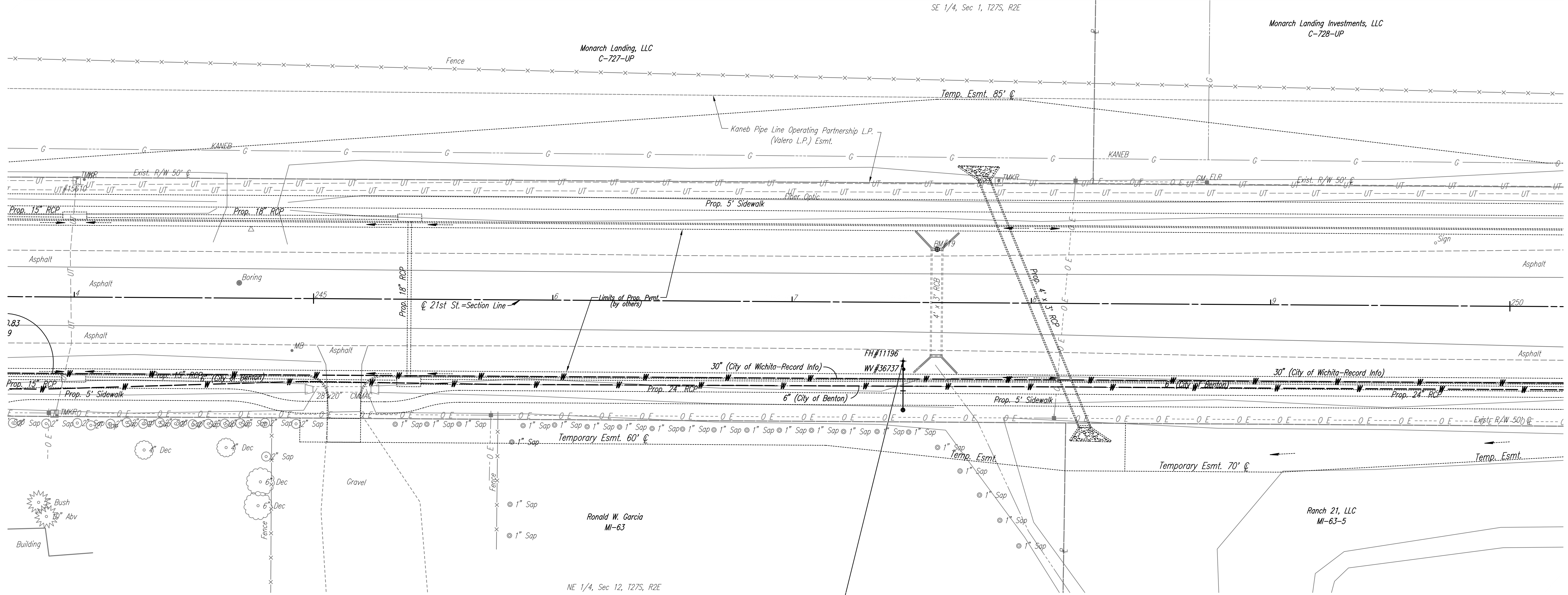


Scale: 1"=20'

SE 1/4, Sec 1, T27S, R2E

Monarch Landing Investments, LLC
C-728-UP

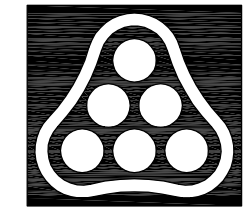
Monarch Landing, LLC
C-727-UP



N: 1,700,046.4266, E: 1,701,254.2751
 @ 21st St. N., Sta. 247+46.57, 24.55' Rt.
 FH RELOCATION NO. 9
 See Detail Sheet No. B40

BM #19 Chis. "a" center N headwall RCBC under 21st
 St. N, W of 159th St. E.
 6.79' Rt. Sta. 247+60.51 Elev. 1368.37

- UTILITIES**
- Gas KANEBC
 - Power Westar Energy
 - Telephone AT&T
 - Water Wichita Water Utilities
 - City of Benton



No.	Revision	By	Date
21ST STREET N. - FROM K-96 TO 159TH STREET E. WATERLINE ADJUSTMENTS STA. 244+00 TO STA. 250+00 JAMES L. ARMOUR, P.E. - CITY ENGINEER CITY OF WICHITA PROJECT NO. 448-90380 Professional Engineering Consultants, P.A. 303 S. TOPEKA • WICHITA, KANSAS 67202 316-262-2691 • FAX 316-262-3003			
Designed by	MDK	Job No.	35-01616-002
Drawn by		Date	JANUARY 2003
			Sht. B24 of 40

Saved 08-12-2008 4:10:16 PM by CSL
 G:\2007\01616\002\bar24