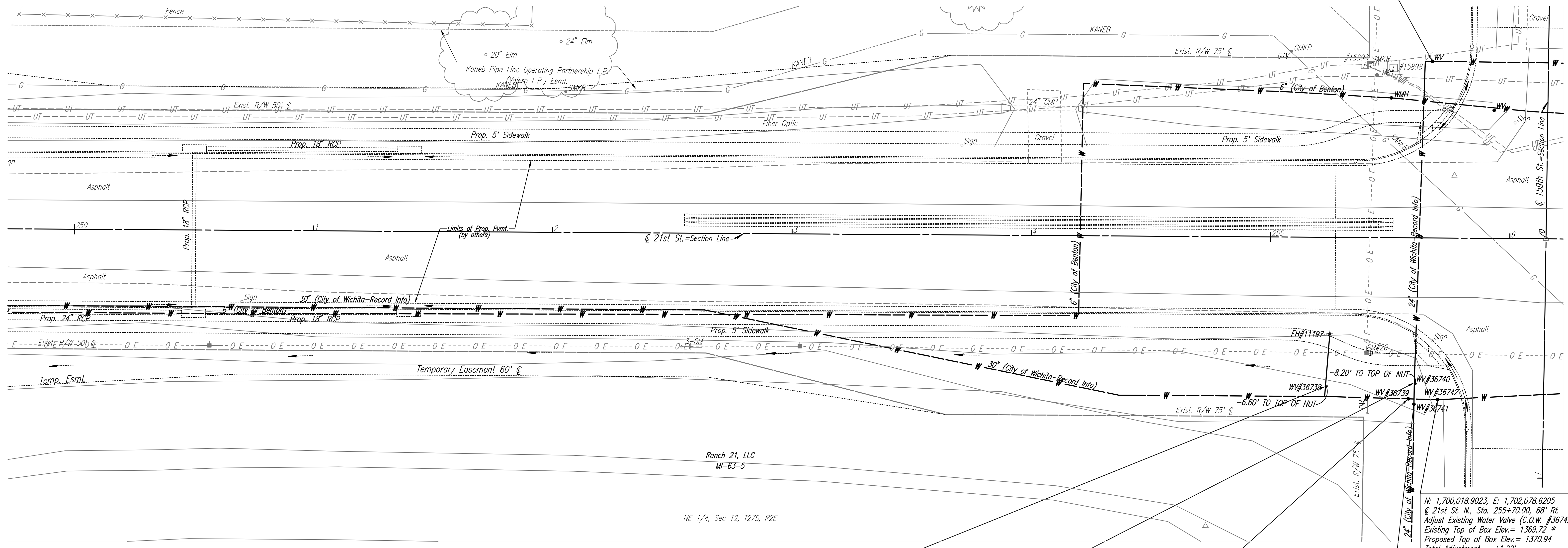


N: 1,700,160.1163, E: 1,702,072.8965
 @ 21st St. N., Sta. 255+67.00, 74' Lt.
 Adjust Existing Water Valve
 Existing Top of Box Elev.= 1370.23 *
 Proposed Top of Box Elev.= 1370.90
 Total Adjustment = +0.67'
 Provide Valve Stem Key Extension to within
 5' of Proposed Top Elevation.

Scale: 1"=20'



N: 1,700,023.4017, E: 1,702,031.9165
 @ 21st St. N., Sta. 255+23.00, 62' Rt.
 Adjust Existing Water Valve (C.O.W. #36738)
 Existing Top of Box Elev.= 1368.29
 Proposed Top of Box Elev.= 1368.94
 Total Adjustment = +0.65'
 Provide Valve Stem Key Extension to within
 5' of Proposed Top Elevation.

N: 1,700,025.3805, E: 1,702,069.0512
 @ 21st St. N., Sta. 255+60.00, 60' Rt.
 Adjust Existing Water Valve (C.O.W. #36740)
 Existing Top of Box Elev.= 1369.06
 Proposed Top of Box Elev.= 1370.71
 Total Adjustment = +1.65'
 Provide Valve Stem Key Extension to within
 5' of Proposed Top Elevation.

N: 1,700,018.9403, E: 1,702,066.3405
 @ 21st St. N., Sta. 255+58.00, 67' Rt.
 Adjust Existing Water Valve (C.O.W. #36739)
 Existing Top of Box Elev.= 1369.20 *
 Proposed Top of Box Elev.= 1370.30
 Total Adjustment = +1.10'
 Provide Valve Stem Key Extension to within
 5' of Proposed Top Elevation.

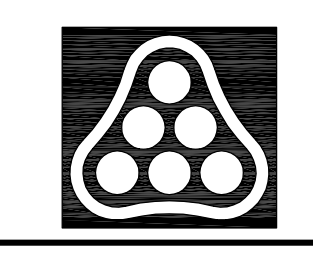
N: 1,700,018.9023, E: 1,702,078.6205
 @ 21st St. N., Sta. 255+70.00, 68' Rt.
 Adjust Existing Water Valve (C.O.W. #36742)
 Existing Top of Box Elev.= 1369.72 *
 Proposed Top of Box Elev.= 1370.94
 Total Adjustment = +1.22'
 Provide Valve Stem Key Extension to within
 5' of Proposed Top Elevation.

N: 1,700,016.7643, E: 1,702,068.7545
 @ 21st St. N., Sta. 255+60.00, 69' Rt.
 Adjust Existing Water Valve (C.O.W. #36741)
 Existing Top of Box Elev.= 1368.82 *
 Proposed Top of Box Elev.= 1370.39
 Total Adjustment = +1.57'
 Provide Valve Stem Key Extension to within
 5' of Proposed Top Elevation.

- UTILITIES**
- Gas KANE B
 - Power Westar Energy
 - Telephone AT&T
 - Water Wichita Water Utilities
 - Water City of Benton

* EXISTING ELEVATION IS FROM
 RECORD INFORMATION.
 CONTRACTOR SHALL VERIFY ACTUAL
 TOP OF VALVE BOX ELEVATION.

BM #20 Step nail in E face Power Pole @ SW cor.
 21st St. N. & 159th St. E.
 48.25' Rt. Sta. 255+41.95 Elev. 1370.31



No.	Revision	By	Date
21ST STREET N. - FROM K-96 TO 159TH STREET E. WATERLINE ADJUSTMENTS			
STA. 250+00 TO STA. 256+00			
JAMES L. ARMOUR, P.E. - CITY ENGINEER CITY OF WICHITA PROJECT NO. 448-90380			
Professional Engineering Consultants, P.A. 303 S. TOPEKA • WICHITA, KANSAS 67202 316-262-2691 • FAX 316-262-3003			
Designed by	MDK	Job No.	35-01616-002
Drawn by		Date	JANUARY 2003
			Sht. B25 of 40

Saved 08-12-2008 4:49:24 PM by CSI
 Q:\2007\01616\002\br25.dwg