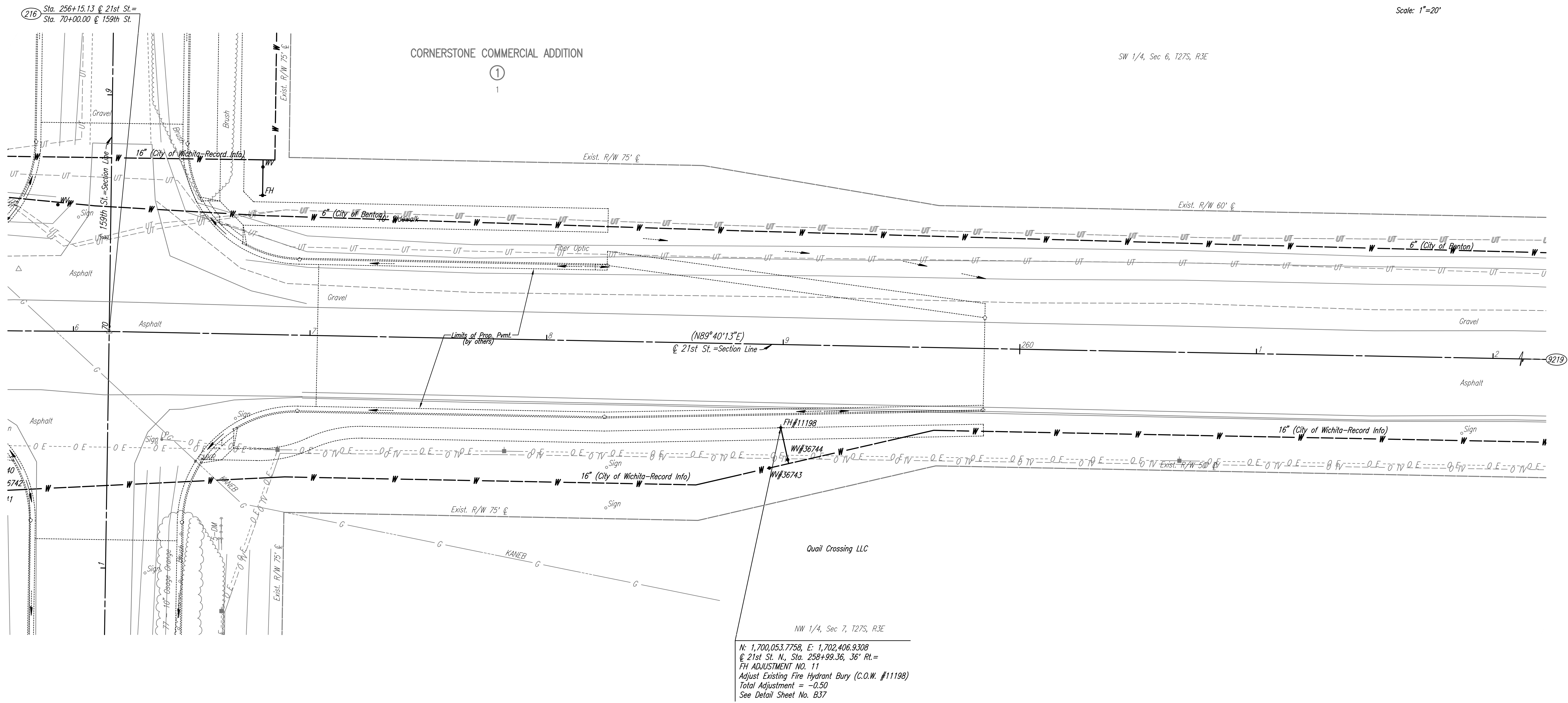
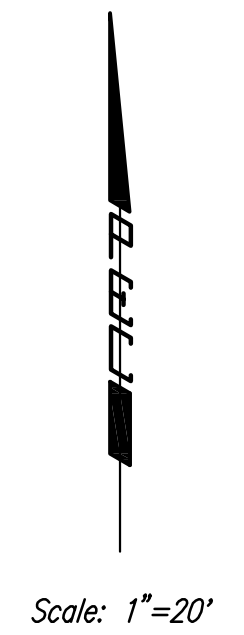


- SE Cor., Sec. 1, T27S, R2E (216)
1. Found 3/4" Pipe with Moehring Cap flush with Asphalt Road Surface.
 2. PK Nail in Aerial Target on North Shoulder Asphalt Road. 46.51' NW
 3. PK Nail in NE Side Power Pole. 86.79' SE
 4. PK Nail in NW Side Power Pole. 88.36' WSW
 5. PK Nail in E Side Power Pole. 104.15' SSW
 6. Chiseled "+" on Top of Curb. 87.12' SE



Saved 08-13-2008 4:23:08 PM by CSI
 Q:\2007\01616\002_bar256

| | | | |
|--|----------|---------|----------------|
| No. | Revision | By | Date |
| 21ST STREET N. - FROM K-96 TO 159TH STREET E. WATERLINE ADJUSTMENTS STA. 256+00 TO STA. 262+00 JAMES L. ARMOUR, P.E. - CITY ENGINEER CITY OF WICHITA PROJECT NO. 448-90380 Professional Engineering Consultants, P.A. 303 S. TOPEKA • WICHITA, KANSAS 67202 316-262-2691 • FAX 316-262-3003 | | | |
| Designed by | MDK | Job No. | 35-01616-002 |
| Drawn by | | Date | JANUARY 2003 |
| | | | Sht. B26 of 40 |