

- W 1/4 Cor., Sec. 2, T27S, R2E (203)
1. Found Stone with "+" in Center & #4 Bar at SW Corner, ± 0.75' Below Surface
 2. Center Travel Way 127th St.
 3. Center of Brass Survey Marker in Concrete 30.07' E
 4. Mag. Nail in S Face of Fence Line Post 42.45' NE
 5. Mag. Nail in N Face of 12" Hedge Tree 32.71' WSW
 6. "X" Cut in S Face of Pipeline Marker 47.26' W

Scale: 1"=20'

SW 1/4, Sec 2, T27S, R2E

HAWTHORNE ADDITION

⑥

1
Twenty First Growth, LLC
C-58226

N: 1,700,947.6128, E: 1,691,517.3524
127th St., 19+16.39, 19.9' Lt.
FH RELOCATE NO. 10
Relocate existing fire hydrant to
N: 1,700,947.6914, E: 1,691,524.3696
127th St., 19+16.4, 27' Lt.
Existing FH Bury Line El.= 1375.42
Proposed FH Bury Line El.= 1375.03
Relocate Fire Hydrant per Fire Hydrant detail,
sheet no. 3. Remove existing 6" pipe and
install new 6" DCL Pipe (no joints). Contractor
shall verify bury depth and Barrel extensions
shall be installed as required. All costs for
relocating Fire Hydrant shall be subsidiary to
the price bid per each for "Fire Hydrant
Relocation #10".

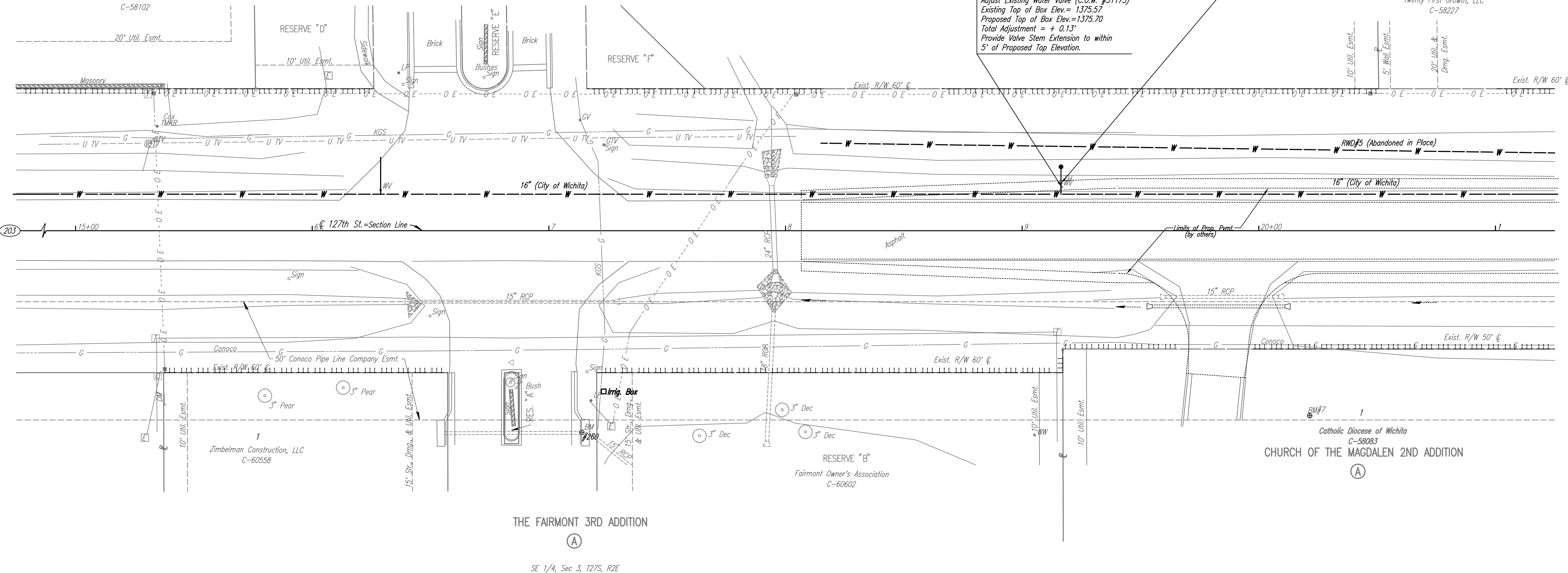
N: 1,700,947.3374, E: 1,691,515.8767
@ 127th St., 19+16.39, 18.5' Lt.
Adjust Existing Water Valve (C.O.W. #31175)
Existing Top of Box Elev.= 1375.57
Proposed Top of Box Elev.=1375.70
Total Adjustment = + 0.13'
Provide Valve Stem Extension to within
5' of Proposed Top Elevation.

2
Twenty First Growth, LLC
C-58227

HAWTHORNE ADDITION

①

17
David W. & Robin Racette Holt
C-58102



THE FAIRMONT 3RD ADDITION

Ⓐ

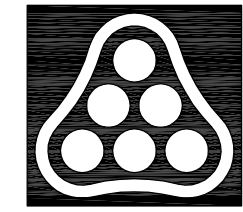
SE 1/4, Sec 3, T27S, R2E

UTILITIES

- Cable TV Cox Communications
- Gas Conoco
- Gas Kansas Gas Service
- Power Westar Energy
- Telephone AT&T
- Water RWD #5

BM #260 Chiseled "□" on center of curb inlet on S side of 127th St. Court, W side of 127th St. E. 85' Rt. Sta. 17+14 Elev. 1378.48

BM #7 Chiseled "□" on center of curb inlet face, near the NE corner of church parking lot. 78' Rt. Sta. 20+22 Elev. 1379.55



No.	Revision	By	Date
21ST STREET N. - FROM K-96 TO 159TH STREET E. WATERLINE ADJUSTMENTS STA. 15+00 TO STA. 21+00 JAMES L. ARMOUR, P.E. - CITY ENGINEER CITY OF WICHITA PROJECT NO. 448-90380 Professional Engineering Consultants, P.A. 303 S. TOPEKA • WICHITA, KANSAS 67202 316-262-2691 • FAX 316-262-3003			
Designed by	MDK	Job No.	35-01616-002
Drawn by		Date	JANUARY 2003
			Sht. B27 of 40