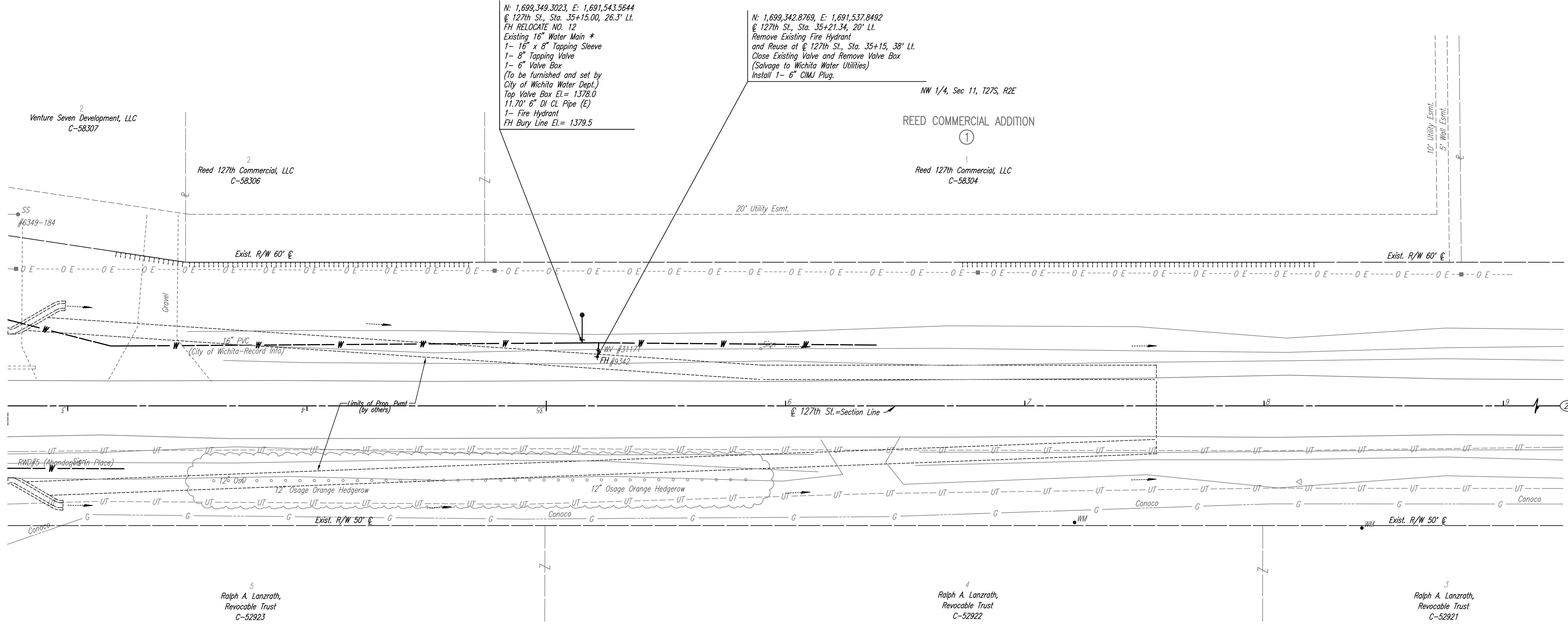


- W 1/4 Cor., Sec. 11, T27S, R2E (205)
1. Found 3/8" I.P. in Thimble, +0.25' Below Surface
 2. Center Travel Way 127th St.
 3. 3 Nails in W Face of Power Pole 55.45' NE
 4. 3 Nails in E Face of Power Pole 36.35' NW
 5. Top Center of Fence Corner Post 33.35' W
 6. N Edge of N Rail of RR Tracks E-W 24.13' S

Scale: 1"=20'

N: 1,699,349.3023, E: 1,691,543.5644
 @ 127th St., Sta. 35+15.00, 26.3' Lt.
 FH RELOCATE NO. 12
 Existing 16" Water Main *
 1- 16" x 8" Tapping Sleeve
 1- 8" Tapping Valve
 1- 6" Valve Box
 (To be furnished and set by City of Wichita Water Dept.)
 Top Valve Box El. = 1378.0
 11.70' 6" DI CL Pipe (E)
 1- Fire Hydrant
 FH Bury Line El. = 1379.5

N: 1,699,342.8769, E: 1,691,537.8492
 @ 127th St., Sta. 35+21.34, 20' Lt.
 Remove Existing Fire Hydrant
 and Reuse at @ 127th St., Sta. 35+15, 38' Lt.
 Close Existing Valve and Remove Valve Box
 (Salvage to Wichita Water Utilities)
 Install 1- 6" CIMJ Plug.



* PRIOR TO BEGINNING CONSTRUCTION, THE CONTRACTOR SHALL EXCAVATE THE EXISTING 16" WATERLINE AT @ 127th St., Sta. 35+15.00, 26.3' Lt. TO VERIFY PIPE SIZE, TYPE, FITTINGS, AND HORIZONTAL AND VERTICAL LOCATION. THE CONTRACTOR SHALL REPORT HIS FINDINGS TO THE ENGINEER SO THAT ANY NECESSARY PLAN MODIFICATIONS CAN BE MADE. ANY ADDITIONAL LABOR OR MATERIALS NECESSARY TO COMPLETE THE CONNECTION SHALL BE CONSIDERED SUBSIDIARY TO THE PROJECT.

- UTILITIES**
- Gas Conoco
 - Power Westar Energy
 - Telephone AT&T
 - Water Wichita Water Utilities
 - RWD #5

No.	Revision	By	Date
21ST STREET N. - FROM K-96 TO 159TH STREET E. WATERLINE ADJUSTMENTS STA. 33+00 TO STA. 39+00 JAMES L. ARMOUR, P.E. - CITY ENGINEER CITY OF WICHITA PROJECT NO. 448-90380 Professional Engineering Consultants, P.A. 303 S. TOPEKA • WICHITA, KANSAS 67202 316-262-2691 • FAX 316-262-3003			
Designed by	MDK	Job No.	35-01616-002
Drawn by		Date	JANUARY 2003
			Sht. B30 of 40

Saved 08-13-2008 9:12:26 AM by CSL
 G:\2007\01616\002\pr127th3