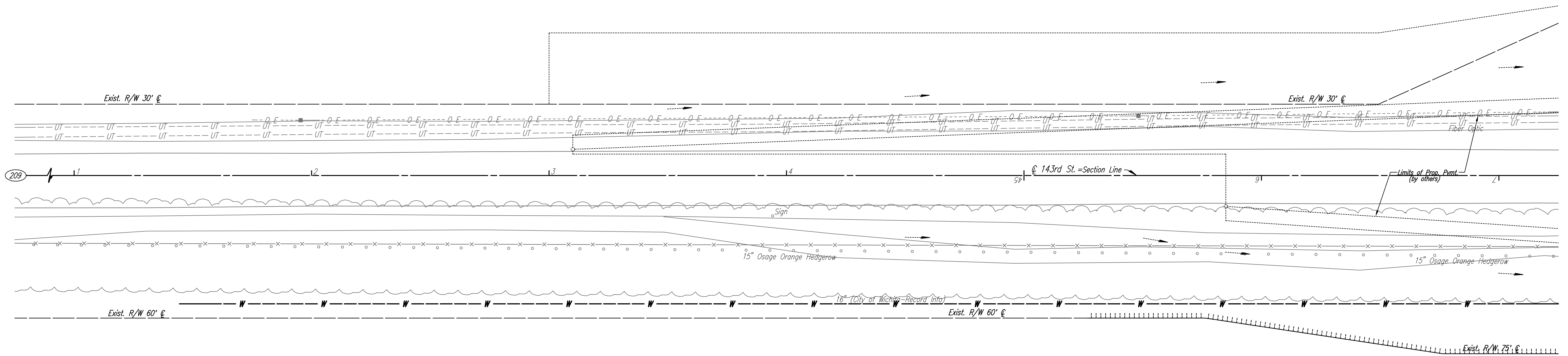


- W 1/4 Cor., Sec. 1, T27S, R2E (209)
1. Found 3/4" Bar, ± 6" Below Surface
  2. Center Travel Way 143rd St.
  3. Hedge Row E & W
  4. 3 Nails in N Face of Power Pole 23.73' E
  5. Bent 60d Nail in W Face of 6" Hedge Tree 42.30' NE
  6. 3 Nails in S Face of Fence Corner Post 30.70' W

  
 Scale: 1"=20'

SW 1/4, Sec 1, T27S, R2E  
 Alan A. Lazarus  
 MI-5



East Side Community  
 Church of God  
 C-60463

EASTSIDE COMMUNITY CHURCH 2ND ADDITION

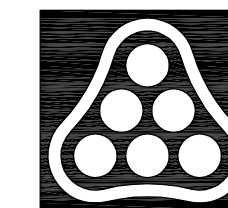
(A)

SE 1/4, Sec 2, T27S, R2E

NO WL ADJUSTMENTS - THIS SHEET

UTILITIES

Power	Westar Energy
Telephone	AT&T
Water	Wichita Water Utilities



No.	Revision	By	Date
21ST STREET N. - FROM K-96 TO 159TH STREET E. WATERLINE ADJUSTMENTS <b>STA. 41+00 TO STA. 47+00</b> JAMES L. ARMOUR, P.E. - CITY ENGINEER CITY OF WICHITA PROJECT NO. 448-90380 <b>Professional Engineering Consultants, P.A.</b> 303 S. TOPEKA • WICHITA, KANSAS 67202 316-262-2691 • FAX 316-262-3003			
Designed by	MDK	Job No.	35-01616-002
Drawn by		Date	JANUARY 2003
			Sht. B31 of 40