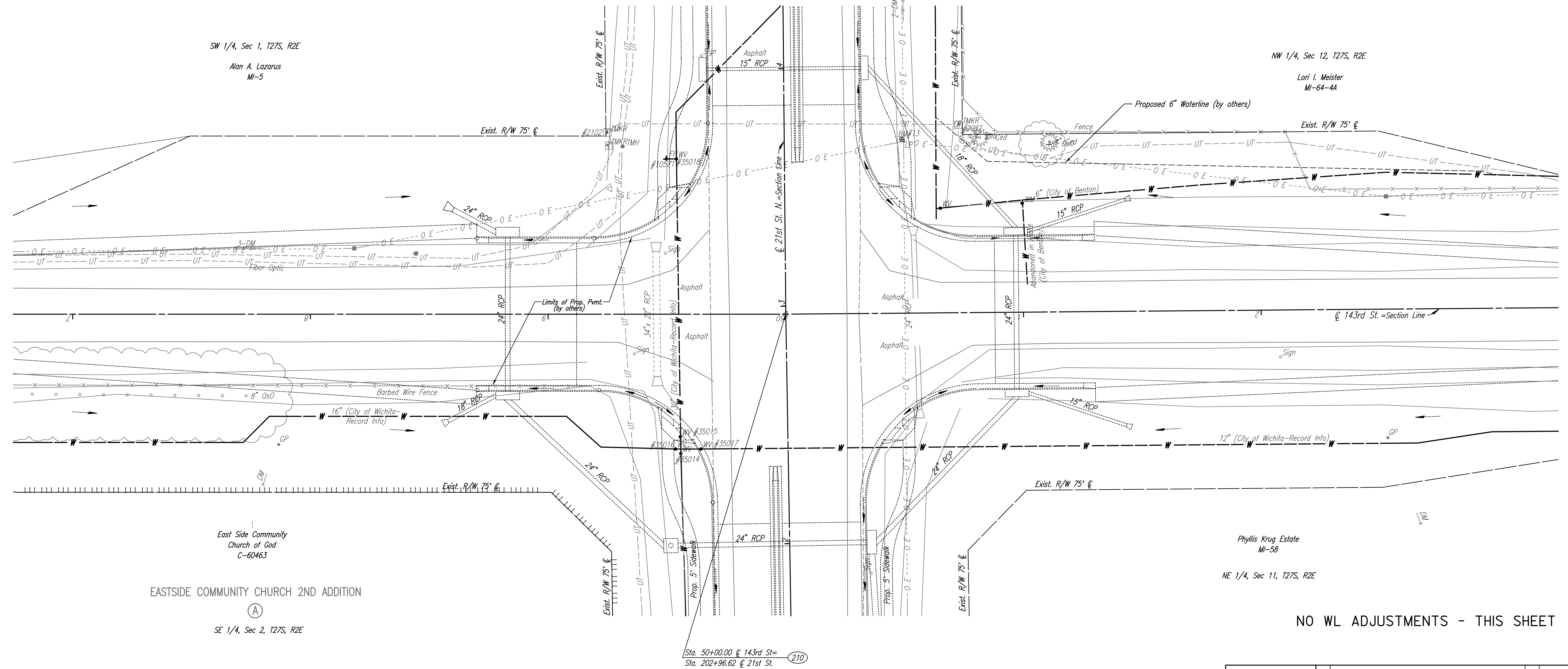


- SW Cor., Sec. 1, T27S, R2E (210)
1. Found 3" Iron Pipe
 2. Chiseled "+" on West end of 24" RCP. 60.20' NW
 3. Chiseled "+" on East end of 24" RCP. 60.18' NE
 4. Chiseled "+" on East end of 24" RCP. 59.70' SE

Scale: 1"=20'



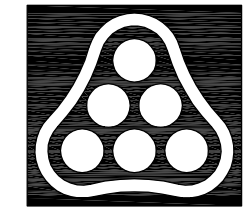
EASTSIDE COMMUNITY CHURCH 2ND ADDITION
 (A)
 SE 1/4, Sec 2, T27S, R2E

NO WL ADJUSTMENTS - THIS SHEET

Sta. 50+00.00 @ 143rd St =
 Sta. 202+96.62 @ 21st St. (210)

- UTILITIES**
- Power: Westar Energy
 - Telephone: AT&T
 - Water: Wichita Water Utilities
 - Water: City of Benton

BM #13 RR spike in N. face Power Pole, SE cor. 21st St. N & 143rd St. E.
 73.17' Lt. Sta. 50+49.49 Elev. 1374.64



No.	Revision	By	Date
21ST STREET N. - FROM K-96 TO 159TH STREET E. WATERLINE ADJUSTMENTS STA. 47+00 TO STA. 53+00 JAMES L. ARMOUR, P.E. - CITY ENGINEER CITY OF WICHITA PROJECT NO. 448-90380 Professional Engineering Consultants, P.A. 303 S. TOPEKA • WICHITA, KANSAS 67202 316-262-2691 • FAX 316-262-3003			
Designed by	MDK	Job No.	35-01616-002
Drawn by		Date	JANUARY 2003
			Sht. B32 of 40

Saved: 08-13-2008 9:15:12 AM by CSL
 G:\2007\01616\002\pr143rd.dwg