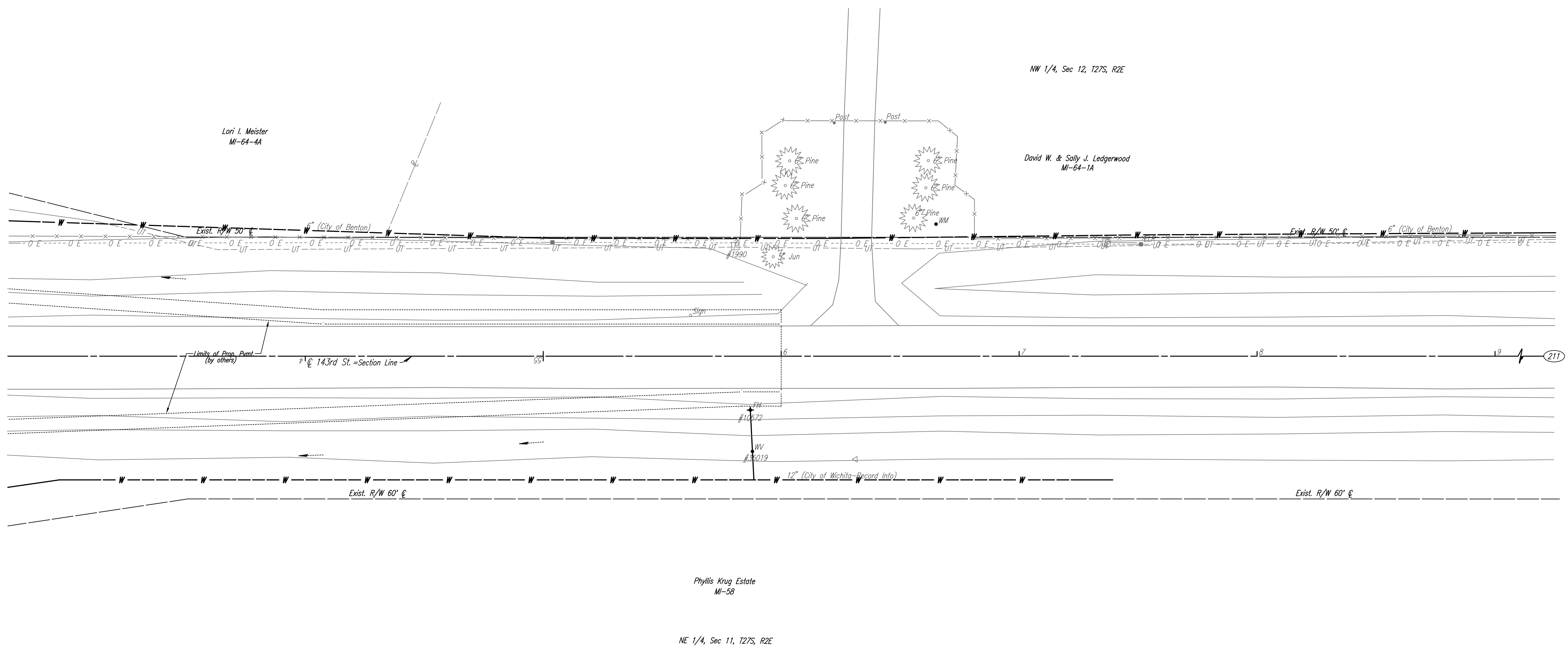


- W 1/4 Cor., Sec. 12, T27S, R2E (211)
1. Found 1/2" Bent I.P., 18" Below Surface
  2. Reset 1/4" I.P. w/PEC Cap, 3" Below Surface
  3. Center Travel Way 14.3rd St.
  4. Nail & Shiner in W Face of Power Pole 49.90' ENE
  5. 3 Nails in S Face of S Pole of 2 Pole Structure 43.01' NW
  6. Center of RR Track E-W ±61.0' S

Scale: 1"=20'



NO WL ADJUSTMENTS - THIS SHEET

- UTILITIES
- Power Westar Energy
  - Telephone AT&T
  - Water Wichita Water Utilities
  - Water City of Benton

No.	Revision	By	Date
21ST STREET N. - FROM K-96 TO 159TH STREET E. WATERLINE ADJUSTMENTS <b>STA. 53+00 TO STA. 59+00</b> JAMES L. ARMOUR, P.E. - CITY ENGINEER CITY OF WICHITA PROJECT NO. 448-90380 <b>Professional Engineering Consultants, P.A.</b> 303 S. TOPEKA • WICHITA, KANSAS 67202 316-262-2691 • FAX 316-262-3003			
Designed by	MDK	Job No.	35-01616-002
Drawn by		Date	JANUARY 2003
			Sht. B33 of 40

Saved 06-12-2008 8:16:08 AM by CSL  
 G:\2007\01616\002\pr143rd