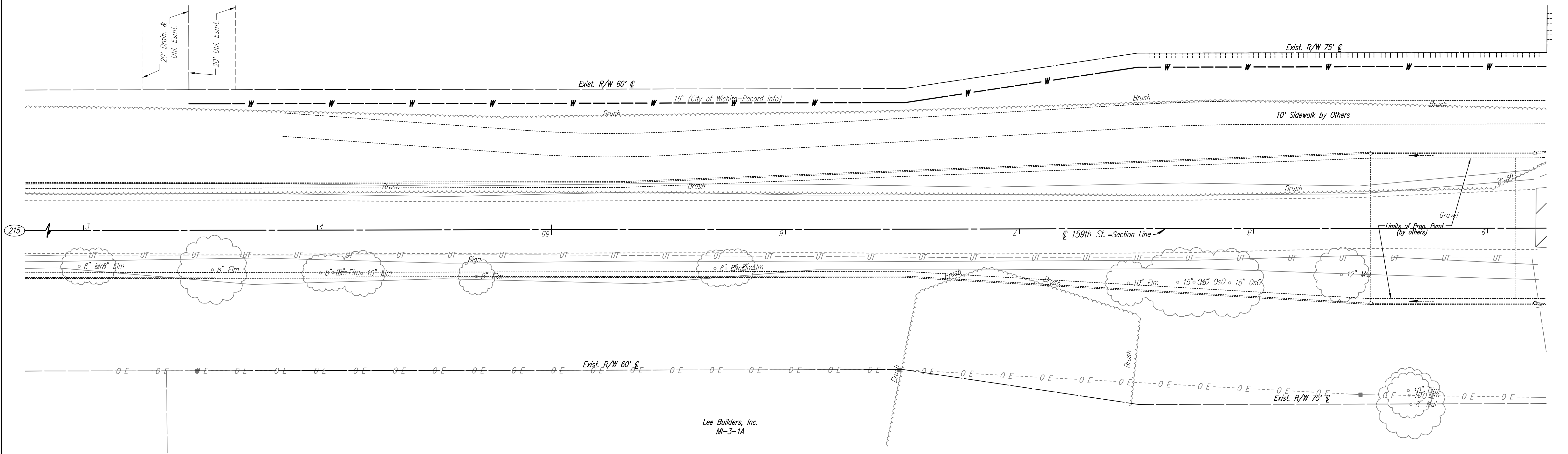


- E 1/4 Cor., Sec. 1, T27S, R2E (215)
1. Found Stone with Nail in Center & 1" I.P. on S Side, ±10" Below Surface
  2. Center Travel Way 159th St. ±3' E
  3. In Line with Hedge Row to E
  4. In Line with Crapline to W
  5. PK Nail in 4" Hedge Tree 23.52' ESE
  6. 40d Nail in 6" Hackberry Tree 35.78' SE

SW 1/4, Sec 6, T27S, R3E  
CORNERSTONE COMMERCIAL ADDITION

①  
1

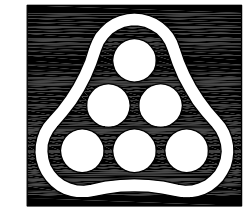


Lee Builders, Inc.  
MI-3-1A

SE 1/4, Sec 1, T27S, R2E

NO WL ADJUSTMENTS - THIS SHEET

- UTILITIES**
- Power: Westar Energy
  - Telephone: AT&T
  - Water: Wichita Water Utilities



No.	Revision	By	Date
21ST STREET N. - FROM K-96 TO 159TH STREET E. WATERLINE ADJUSTMENTS <b>STA. 63+00 TO STA. 69+00</b> JAMES L. ARMOUR, P.E. - CITY ENGINEER CITY OF WICHITA PROJECT NO. 448-90380 <b>Professional Engineering Consultants, P.A.</b> 303 S. TOPEKA • WICHITA, KANSAS 67202 316-262-2691 • FAX 316-262-3003			
Designed by	MDK	Job No.	35-01616-002
Drawn by		Date	JANUARY 2003