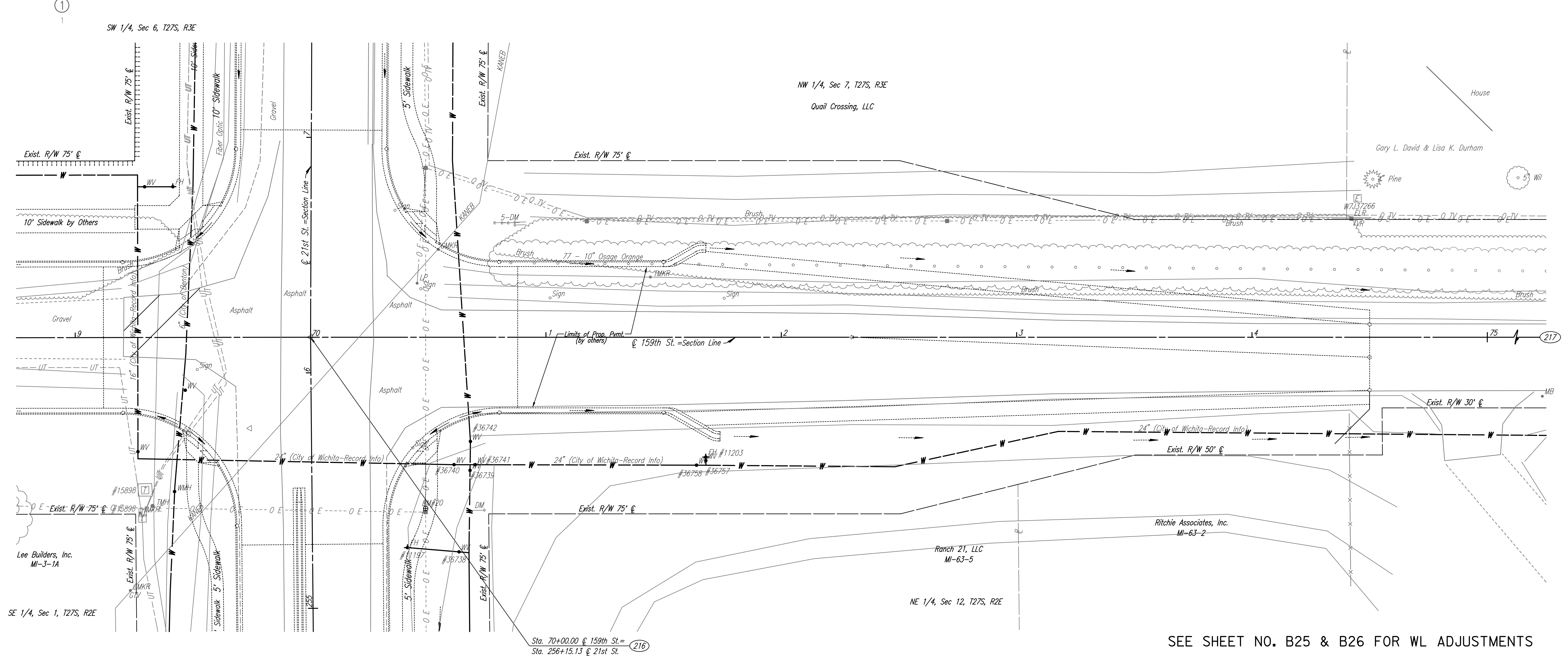


- SE Cor., Sec. 1, T27S, R2E (216)
1. Found 3/4" Pipe with Moehring Cap flush with Asphalt Road Surface. 46.51' NW
  2. PK Nail in Aerial Target on North Shoulder Asphalt Road. 86.79' SE
  3. PK Nail in NE Side Power Pole. 88.36' WSW
  4. PK Nail in NW Side Power Pole. 104.15' SSW
  5. PK Nail in E Side Power Pole. 87.12' SE
  6. Chiseled "+" on Top of Curb.



- E 1/4 Cor., Sec. 12, T27S, R2E (217)
1. Found #4 Bar over Stone, +10" Below Surface. 9' W
  2. Center Travel Way 159th St. ±65' S
  3. Center of RR E-W. 70.35' NE
  4. Mag. Nail in S Face of Power Pole. 43.80' W
  5. Top Center of Fire Hydrant. 49.07' SW
  6. "X" Cut in E Face of RR Crossing Post.

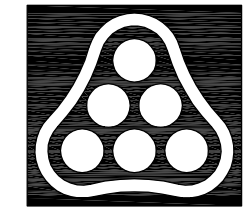
CORNERSTONE COMMERCIAL ADDITION



SEE SHEET NO. B25 & B26 FOR WL ADJUSTMENTS

BM #20 Step nail in E face Power Pole @ SW cor.  
21st St. N. & 159th St. E.  
72.73' Rt. Sta. 70+48.91 Elev. 1370.31

- UTILITIES**
- Cable TV Cox Communications
  - Gas KANE
  - Power Westar Energy
  - Telephone AT&T
  - Water Wichita Water Utilities
  - Water City of Benton



No.	Revision	By	Date
21ST STREET N. - FROM K-96 TO 159TH STREET E. WATERLINE ADJUSTMENTS			
<b>STA. 69+00 TO STA. 75+00</b>			
JAMES L. ARMOUR, P.E. - CITY ENGINEER CITY OF WICHITA PROJECT NO. 448-90380			
<b>Professional Engineering Consultants, P.A.</b> 303 S. TOPEKA • WICHITA, KANSAS 67202 316-262-2691 • FAX 316-262-3003			
Designed by	MDK	Job No.	35-01616-002
Drawn by		Date	JANUARY 2003
			Sht. B35 of 40