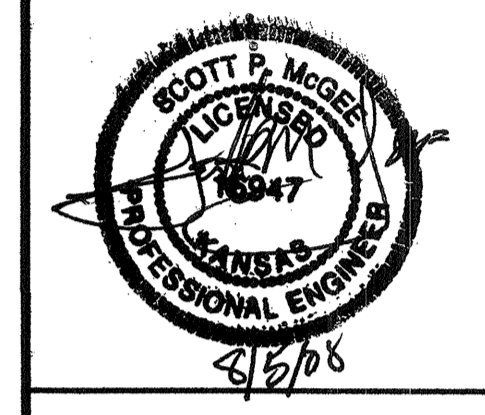


BY	EDH
DESCRIPTION	CITY COMMENTS 06-04-08
DATE	07/23/08



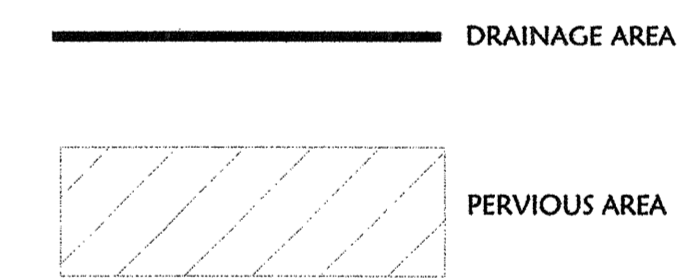
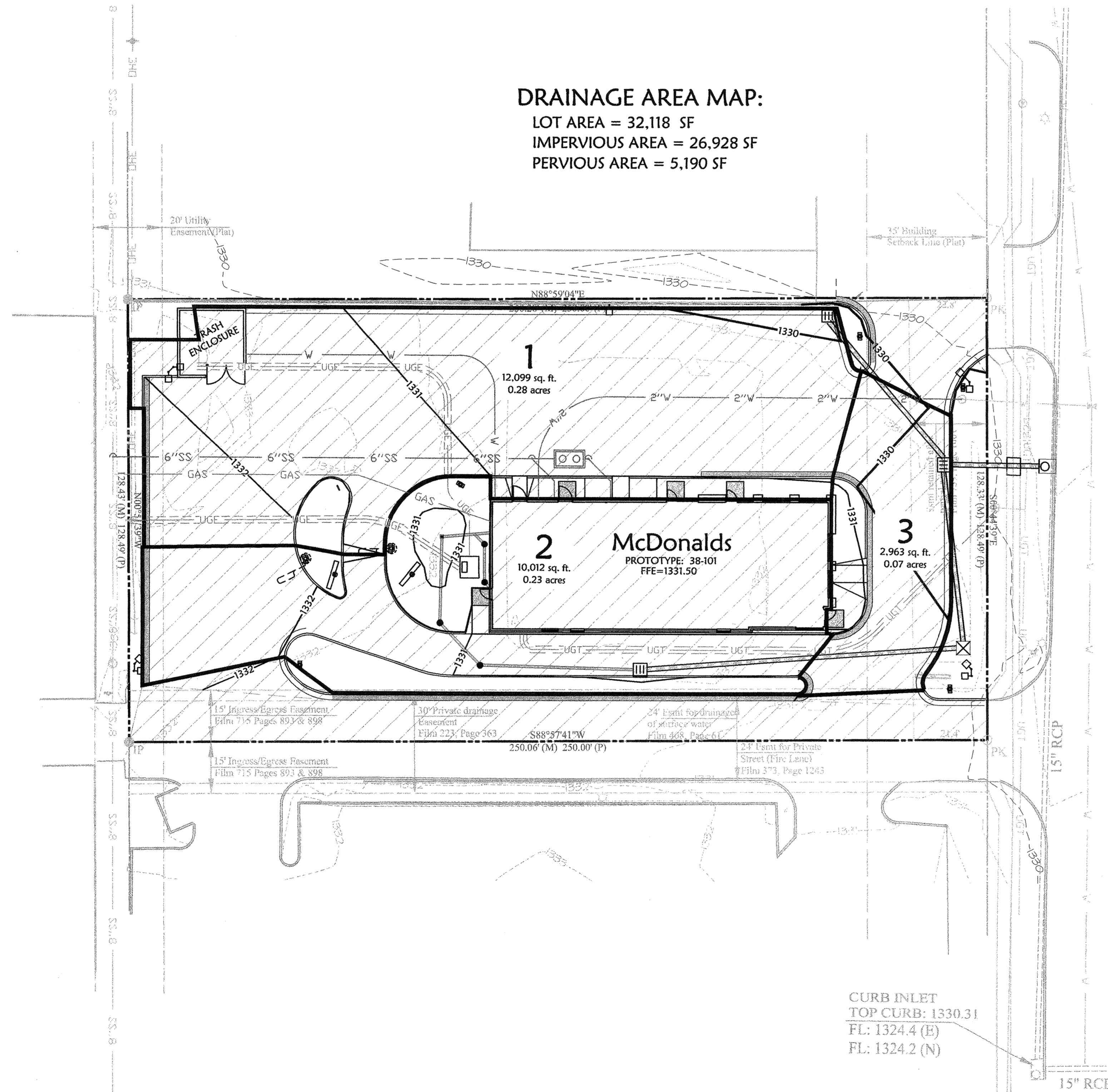
**Ozark**  
Civil Engineering Inc.  
Bentonville • Kansas City • Austin

**McDonald's**  
THESE PLANS AND SPECIFICATIONS ARE THE PROPERTY OF McDONALD'S CORPORATION AND SHALL NOT BE REPRODUCED WITHOUT THEIR WRITTEN PERMISSION.  
KANSAS CITY  
10801 MARTIN BLVD., STE. 400, OVERLAND PARK, KS 66210

STATUS	DATE	BY
PRELIMINARY:	04/07/08	-
PLAN CHECKED:		-
AS-BUILT:		-
JOB NO.	08-0808	

**DRAINAGE AREA MAP:**

LOT AREA = 32,118 SF  
IMPERVIOUS AREA = 26,928 SF  
PERVIOUS AREA = 5,190 SF



**GRADING PROPOSED FEATURES**

- BOUNDARY LINE
- RIGHT OF WAY LINE
- EASEMENT LINE
- CONCRETE CURB AND GUTTER
- FENCE
- GUARD RAIL
- RETAINING WALL
- SANITARY SEWER SERVICE
- WATER SERVICE
- UNDERGROUND ELECTRIC SERVICE
- UNDERGROUND TELEPHONE SERVICE
- OVERHEAD ELECTRIC SERVICE
- OVERHEAD TELEPHONE SERVICE
- FIBER OPTIC CABLE SERVICE
- GAS SERVICE
- SPOT ELEVATIONS: XXXX.XX
- TC=TOP OF CURB
- G=GUTTER OF CURB
- TG=TOP OF GRADE (BEHIND TOP OF WALL)
- BG=BOTTOM OF GRADE (AT FRONT OF WALL)
- HP=HIGH POINT
- LP=LOW POINT
- IP=EDGE OF PAVEMENT
- FES=FLARED END SECTION
- RIP-RAP PAD (SEE EROSION PLANS FOR SIZE)
- SANITARY SEWER MAN-HOLE
- FIRE HYDRANT WITH GUARD POSTS
- UTILITY POLE
- WATER LINE TEE, BEND, VALVE, AND PLUG

STREET ADDRESS	
1219 S. ROCK RD.	
CITY	STATE
WICHITA	KANSAS
COUNTY	REGIONAL DWG. NO
SEDGWICK	015-0106
DRAINAGE MAP	