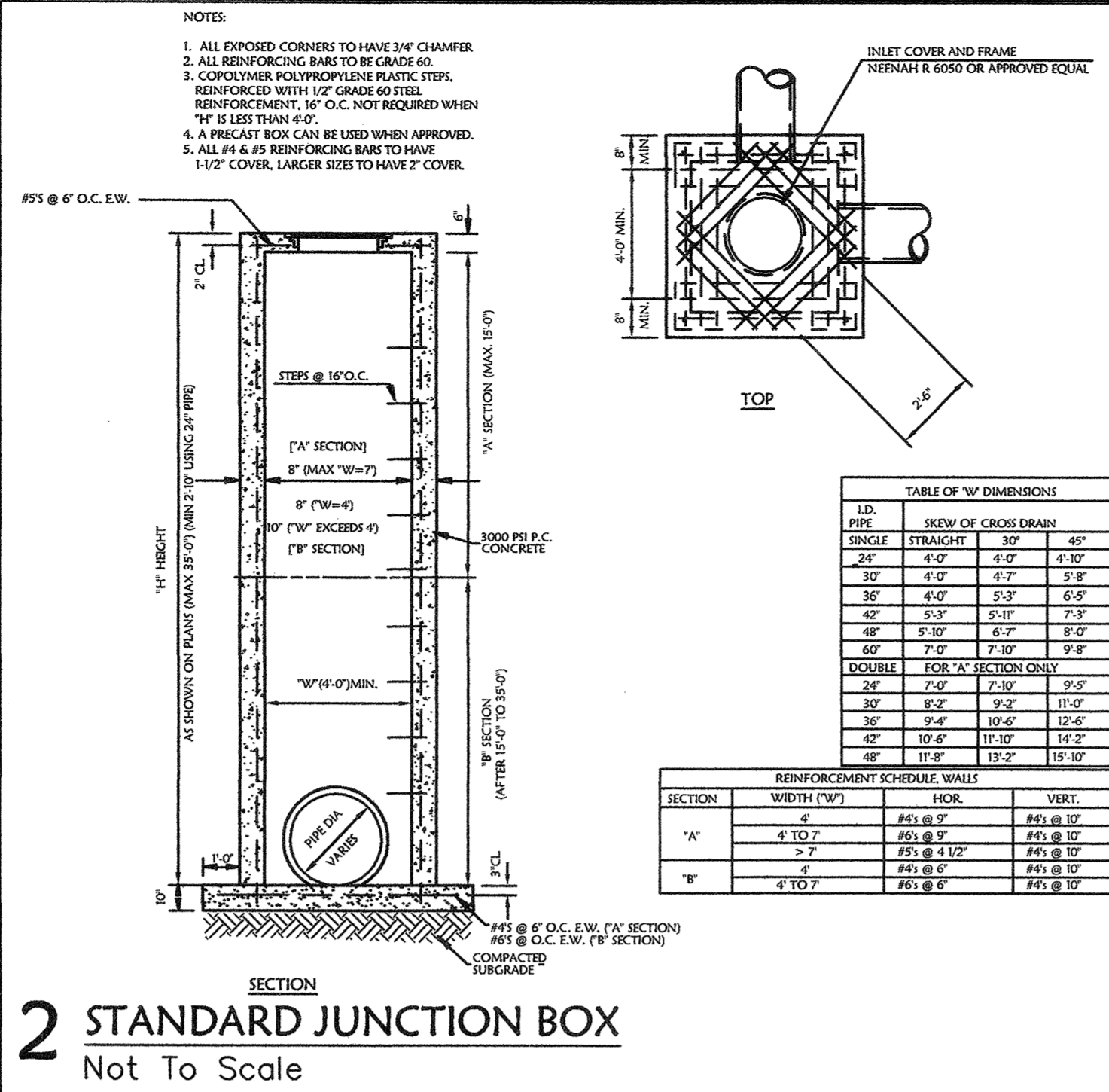
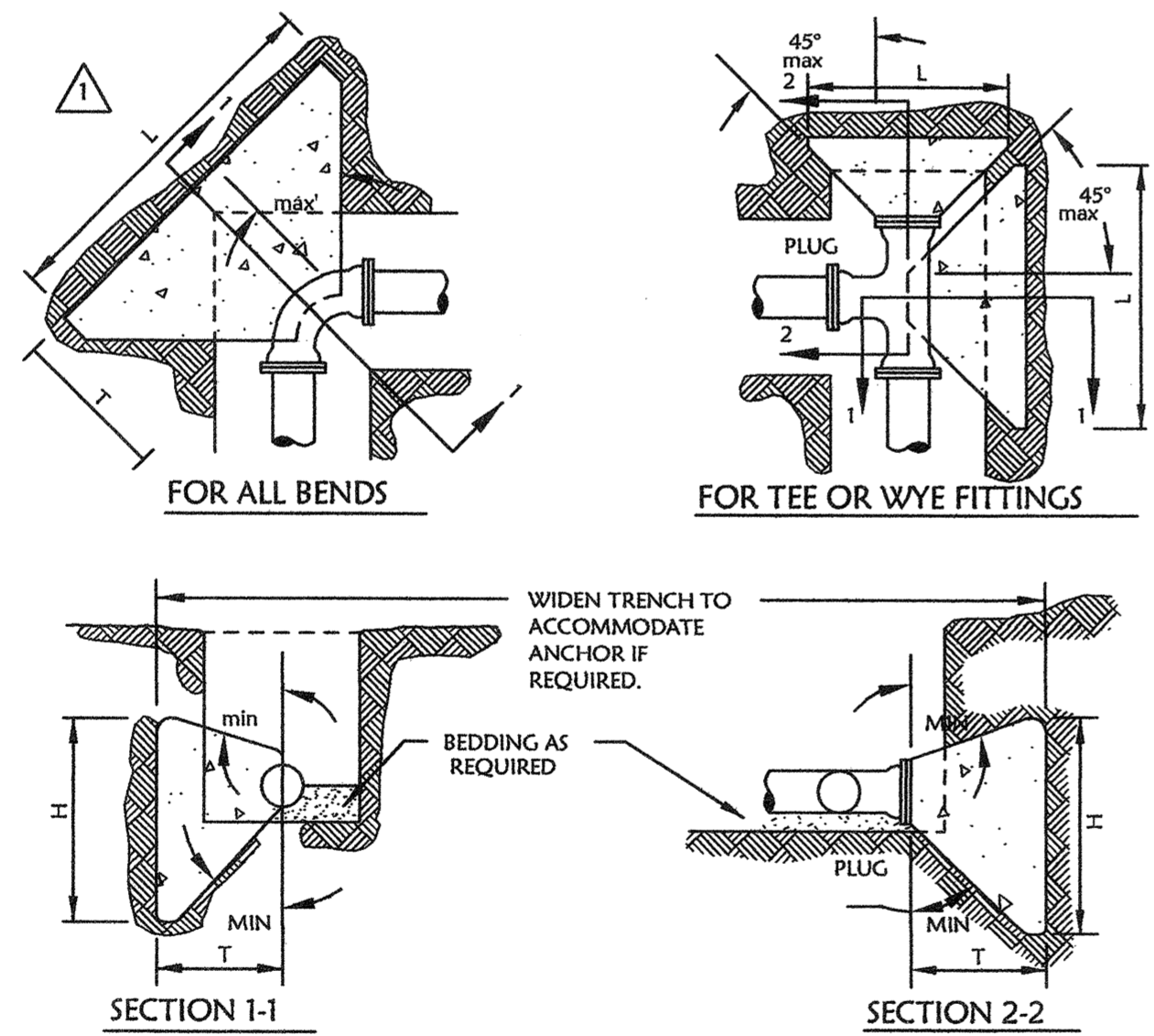
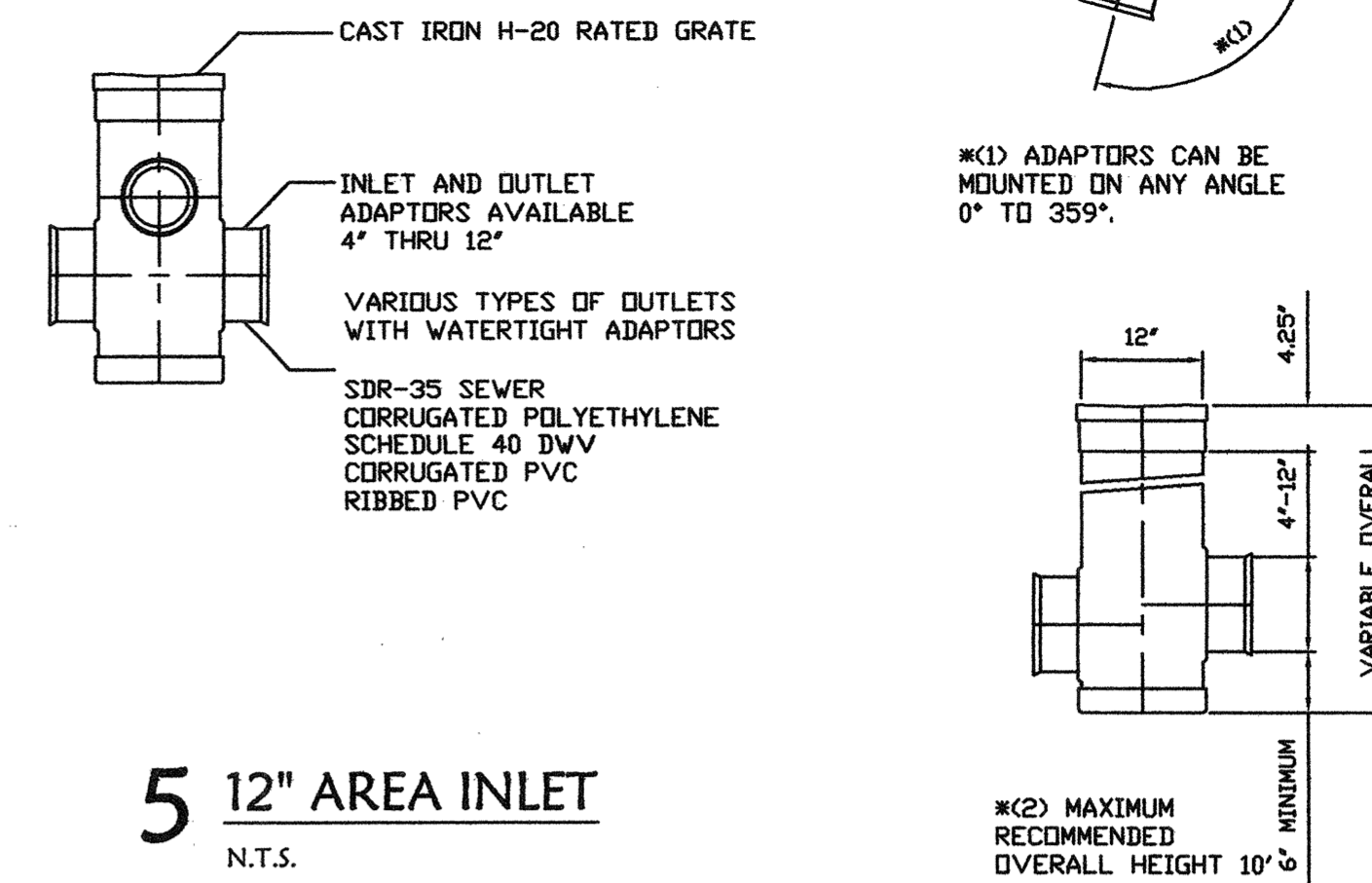


**1 CURB DRAINAGE CATCH BASIN**  
Not To Scale



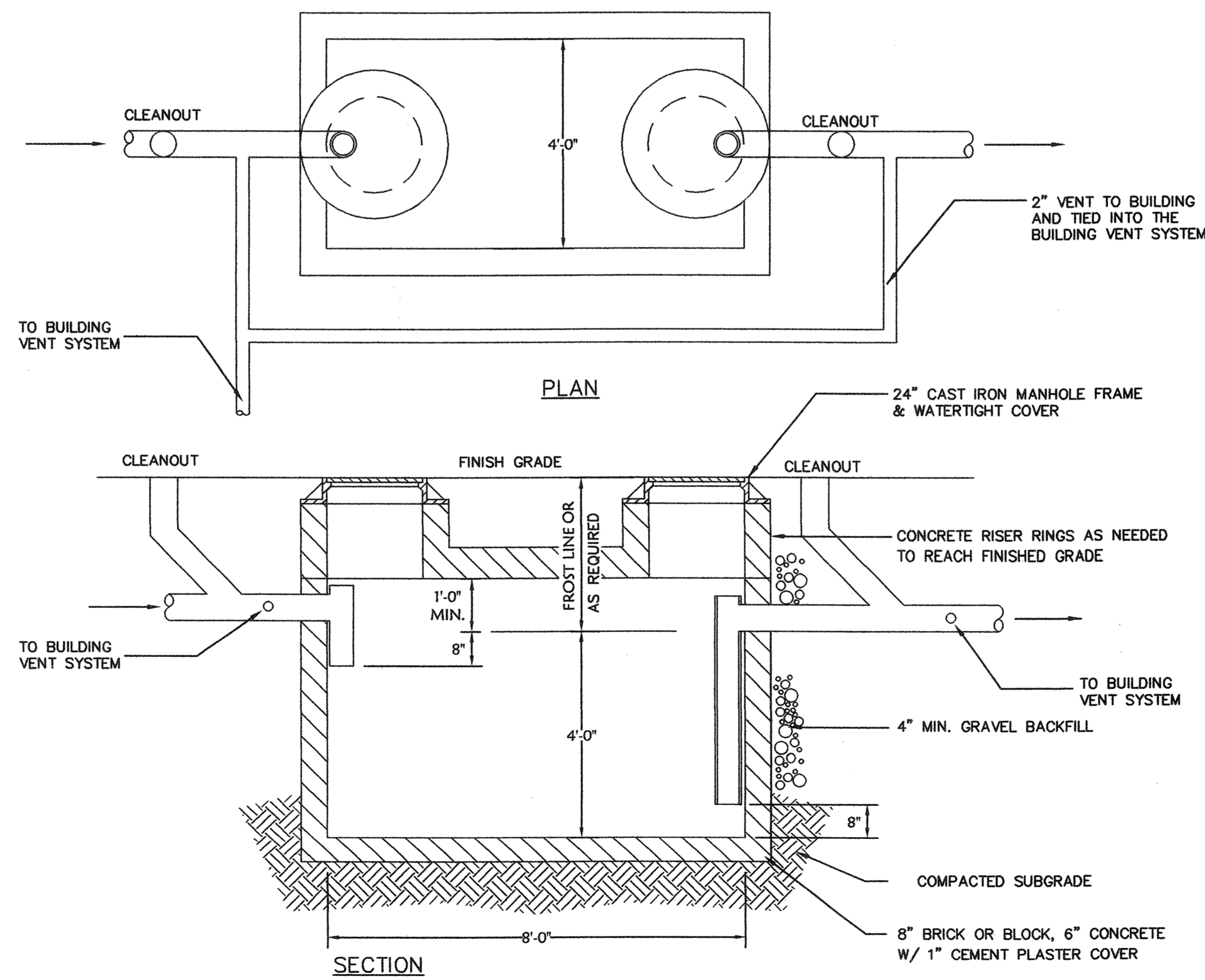
**3 TYPICAL 4' DIA. MANHOLE**  
Not To Scale



PIPE SIZE	DEGREE OF BEND	BEND DIMENSIONS (FEET)			VOL. CU.YD.	TEE AND PLUGS (FEET)			VOL. CU.YD.
		L	H	T		L	H	T	
4" & 6"	90	2.50	2.50	3.01	0.24	2.00	2.25	2.50	0.15
	45	2.00	2.25	2.60	0.15				
	22 1/2	1.50	2.00	2.52	0.10				
	11 1/4	1.50	2.00	2.50	0.10				
8"	90	3.66	3.16	3.21	0.48	3.16	2.91	2.66	0.32
	45	2.66	2.66	2.77	0.26				
	22 1/2	1.66	2.16	2.69	0.13				
	11 1/4	1.66	2.16	2.67	0.13				
10" & 12"	90	4.83	3.83	3.42	0.83	3.83	4.00	2.83	0.52
	45	3.33	3.58	2.95	0.43				
	22 1/2	2.33	2.58	2.86	0.24				
	11 1/4	1.83	2.33	2.84	0.18				

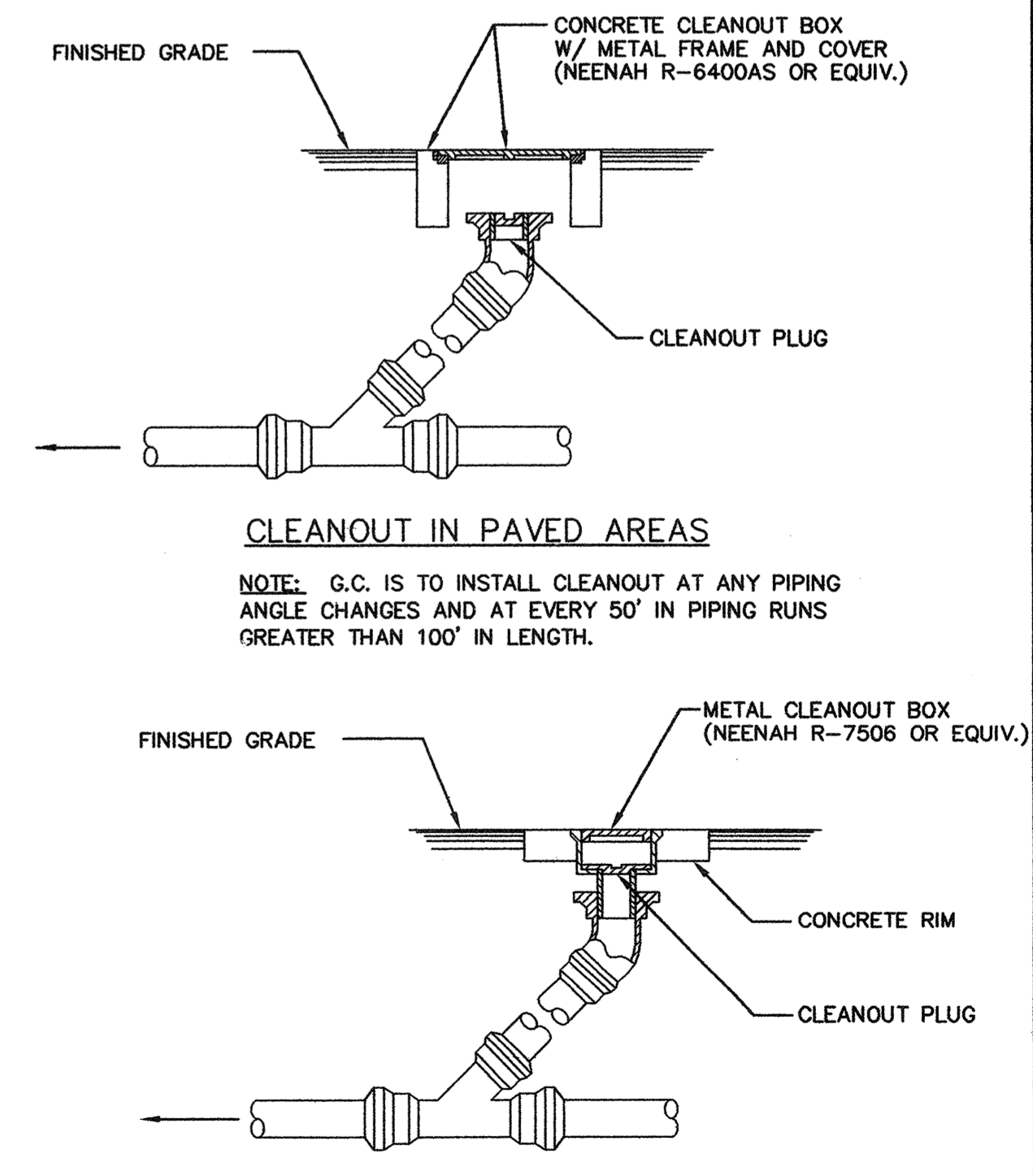
- THRUST BLOCKS ARE REQUIRED WHENEVER THE PIPELINE: CHANGES DIRECTION, CHANGES SIZE, DEAD ENDS AND AT VALVES.
- USE 2500 P.S.I. CONCRETE.
- NO CONCRETE SHALL BE POURED ON ANY PART OF THE JOINT.
- THE CONSULTING ENGINEER SHALL BE RESPONSIBLE TO VERIFY THE TYPE & SIZE OF ALL THRUST BLOCKS.

**6 TYPICAL THRUST BLOCKING**  
N.T.S.



NOTE: SIZE AS PER CODE LOCAL REQUIREMENTS.  
1000 GAL. PRE-CAST CONCRETE  
FOR REFERENCE USE IN SIZING:  
1 GALLON = .134 CUBIC FEET VOLUME OF  
STD. 1000 GAL. TRAP = 134± C.F.

**8 TYPICAL EXTERIOR GREASE TRAP**  
Not To Scale



**9 EXTERIOR CLEANOUT**  
Not To Scale