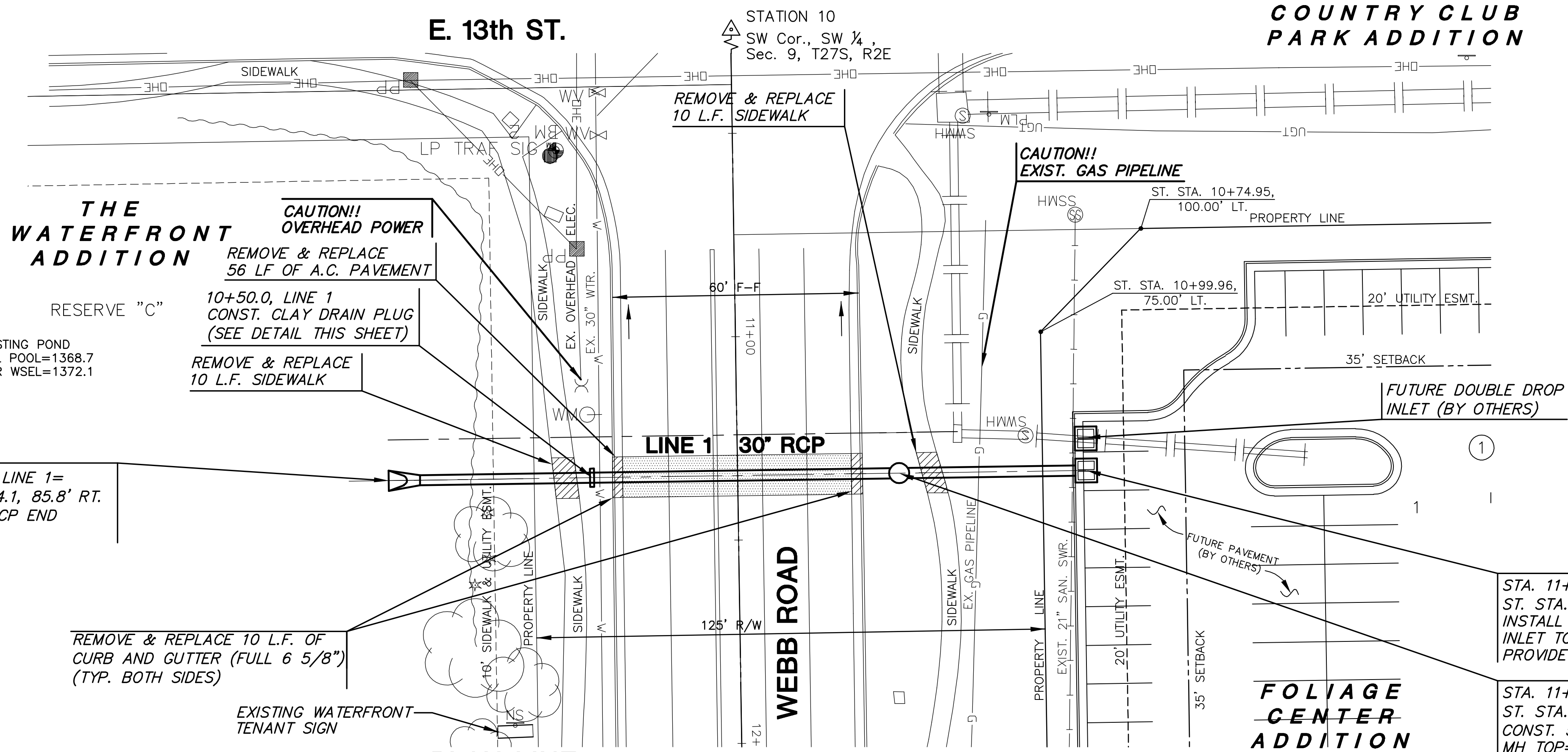
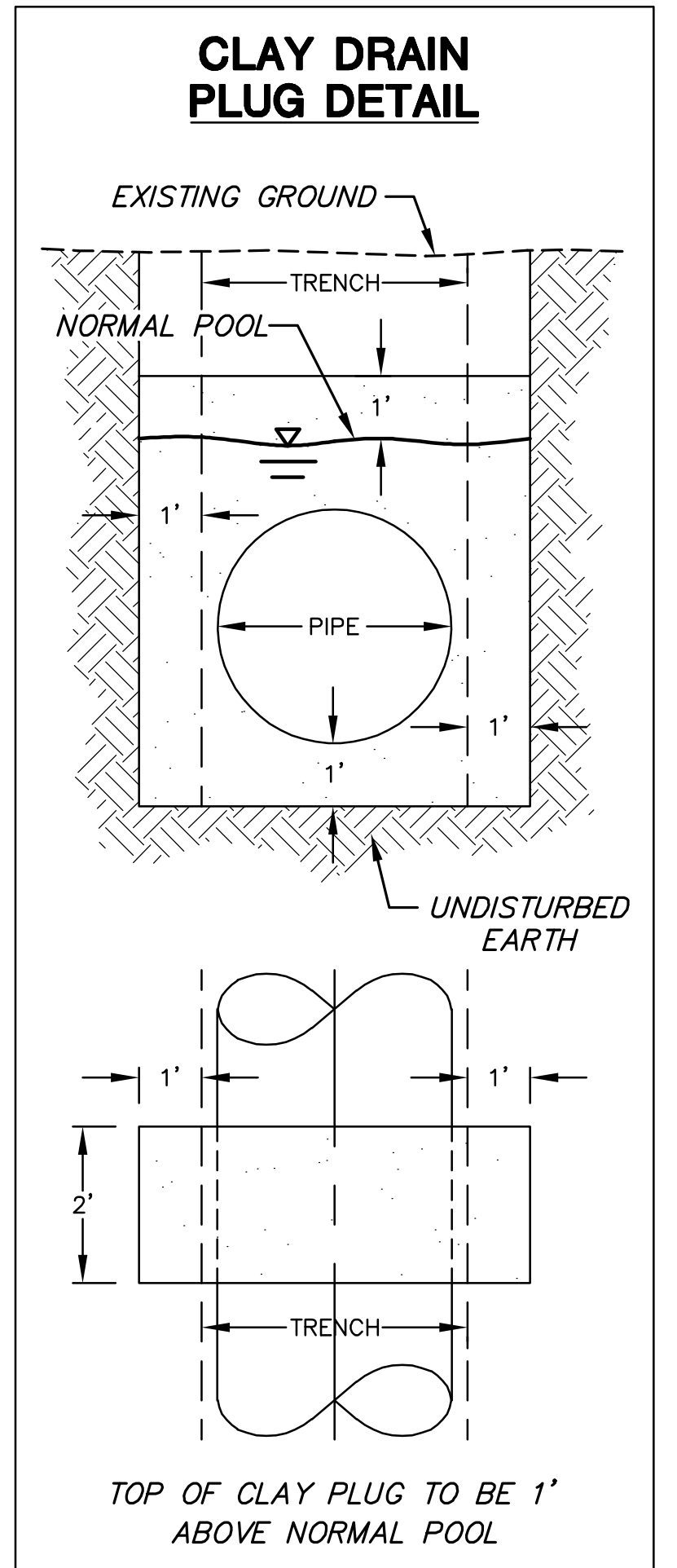
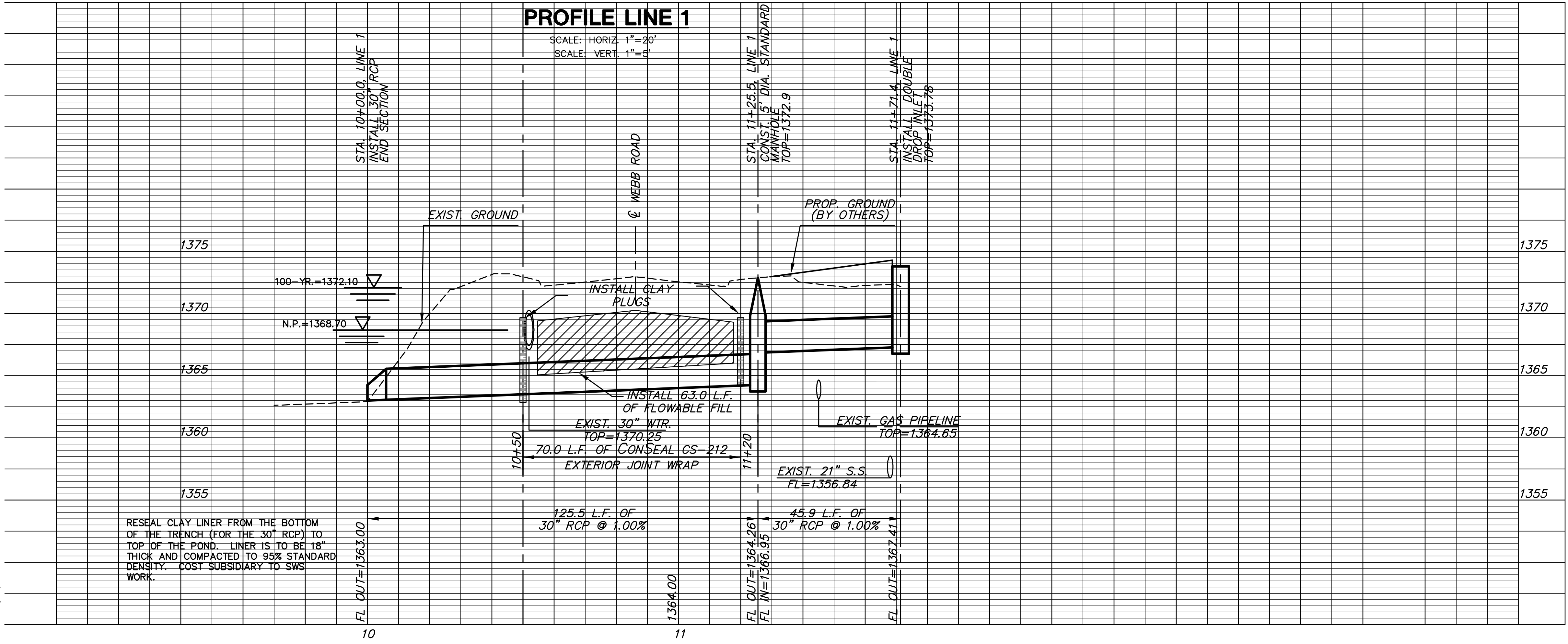


- NOTES:**
- CONTRACTOR TO VERIFY DEPTH OF EXISTING UTILITIES PRIOR TO CONSTRUCTION.
 - SEE PROFILE FOR PIPE SECTIONS REQUIRING CONSEAL EXTERIOR JOINT WRAP (OR AN APPROVED EQUAL). INSTALL PER MANUFACTURER RECOMMENDATIONS ON ALL JOINTS WITHIN AREAS SPECIFIED ON PROFILE. INSTALL CLAY PLUG AT BOTH ENDS OF SPECIFIED SECTIONS.
 - THE CONTRACTOR SHALL COORDINATE WITH THE DEVELOPER'S IRRIGATION CONTRACTOR FOR REQUIRED REPAIRS. CONTACT ANDY VEACH AT LAWN SPRINKLER SERVICES (316) 303-1200. COST SHALL BE SUBSIDIARY TO OTHER ITEMS BID.
 - THE CONTRACTOR SHALL PROVIDE TRAFFIC CONTROL TO CHANNELIZE TRAFFIC TO ALLOW CONSTRUCTION OF THE SWS SYSTEM. THE CONTRACTOR SHALL MAINTAIN AT LEAST ONE LANE OF TRAFFIC IN EACH DIRECTION THROUGHOUT THE DURATION OF CONSTRUCTION.
 - THE CONTRACTOR SHALL REMOVE AND REPLACE TRAFFIC SIGNAL DETECTOR LOOPS AS REQUIRED TO INSTALL THE SWS PIPE. COST SHALL BE SUBSIDIARY TO SWS WORK.
 - THE CONTRACTOR SHALL REPLACE PAVEMENT MARKINGS REQUIRED TO BE REMOVED TO INSTALL THE PIPE IN-KIND.



PLAN LINE 1



PLOTTED: Tuesday, September 09, 2008 @ 08:13AM

J:\DWG\04274\DWG\SWS\FOLIAGE CENTER ADD\04274_D1-0PT2.DWG