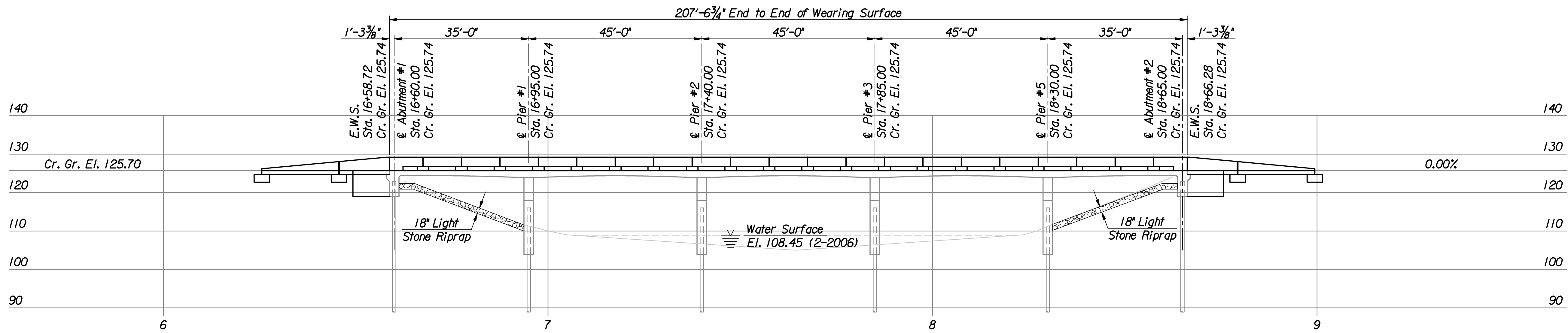
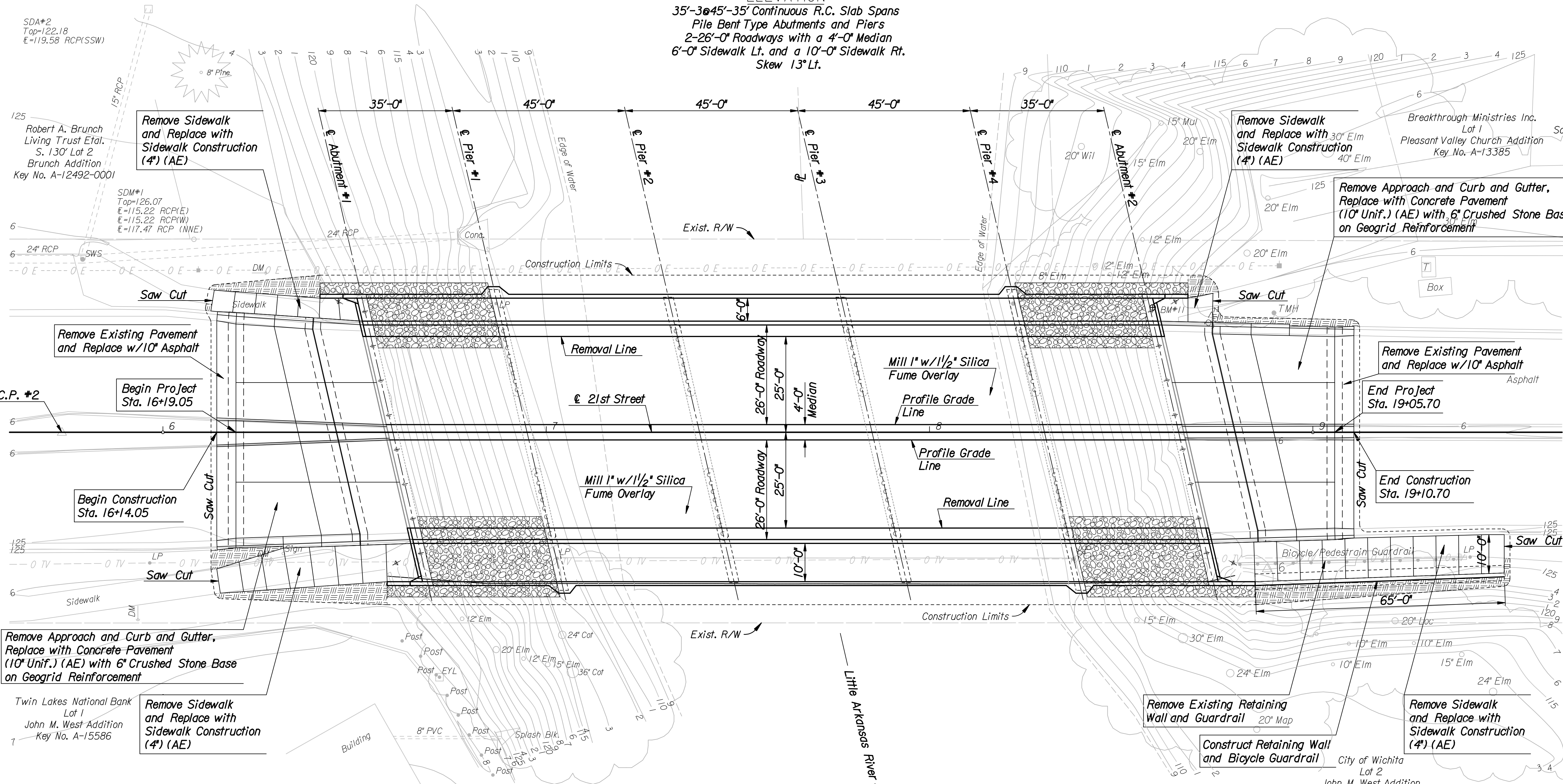


STATE	PROJECT NO.	YEAR	SHEET NO.	TOTAL SHEETS
KANSAS	472-84748	2008	5	52
KDOT PROJECT NO. 87 N-0429-01				



**ELEVATION**  
 35'-3@45'-35' Continuous R.C. Slab Spans  
 Pile Bent Type Abutments and Piers  
 2-26'-0\" Roadways with a 4'-0\" Median  
 6'-0\" Sidewalk Lt. and a 10'-0\" Sidewalk Rt.  
 Skew 13° Lt.



PLAN

- C.P. #1  
 1. Found 3/4\" I.P. in Thimble  
 2. N. 10000.00 E. 10000.00
- C.P. #2  
 1. Mag Nail  
 2. N. 9999.487 E. 10119.327
- C.P. #3  
 1. Mag Nail  
 2. N. 10002.972 E. 10664.143
- S. 1/4 Sec. Cor. Sec. 6, T27S R1E  
 1. Found 3/4\" I.P.  
 2. N. 10000.0000 E. 8995.4738
- P.O.T. #1 - @ 21st Street  
 1. Sta. 16+00.00 (Office Set)  
 2. N. 9999.5721 E. 10145.6705
- P.O.T. #2 - @ 21st Street  
 1. Sta. 19+00.00 (Office Set)  
 2. N. 9999.5721 E. 10445.6705

- Riprap (Light Stone)
- Sod (Bermuda Grass Strips)

No.	Revisions	By	Date
<b>CITY OF WICHITA</b> BR. NO. 430400876500010 STA. 17+62.50 <b>PROPOSED BRIDGE LAYOUT</b> <b>21ST STREET OVER LAR</b> PROJECT NO. 472-84748 SEDGWICK COUNTY <b>Professional Engineering Consultants, P.A.</b> 303 S. TOPKA - WICHITA, KANSAS 67202 316-262-2691 • FAX 316-262-3003			
Designed by	M.S.N.	Checked by	R.A.S.
Drawn by	W.L.L.	Date	Feb. 2007
		Job No.	06009

Plotted by : msn 9-2-2008  
 Drawn by : will  
 1/2/2006/06009/Final/09\_02\_2008/06009-000-Proposed-Layout.dgn

B.M. B - Chiseled "D" on Top of South Side Concrete Light Base 225' W. of the W. End of Bridge over Little Arkansas River on the N. R/W of 21st St. N. and in front of Boeing Credit Union Building.  
 N. 10049.9583 E. 9979.3460 El. 128.68

B.M. #11 - C.O.W. Disc in N.E. Cor. of Bridge over the Little Arkansas River 32.6' Lt. Sta. 18+58.21 El. 126.31 N. 10032.1527 E. 10403.8816

B.M. A - Chiseled "D" on Top of South Side Concrete Light Base 250' E. of the E. End of Bridge over Little Arkansas River on the N. R/W of 21st St. N. N. 10068.6411 E. 10639.5163 El. 127.52