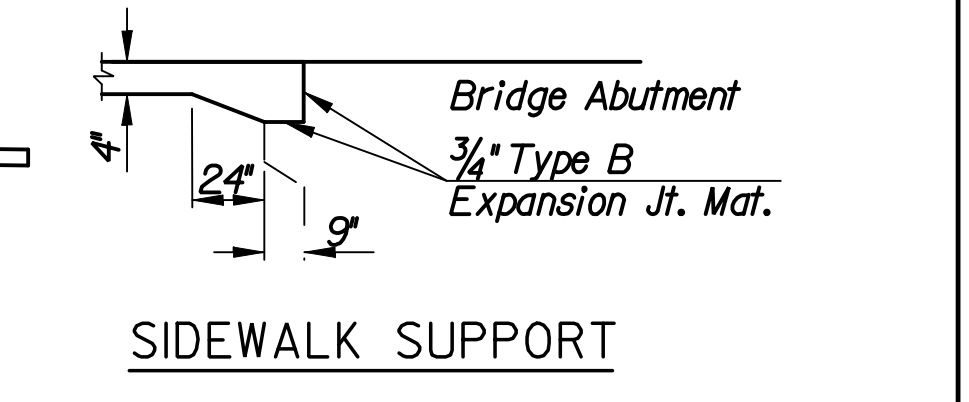
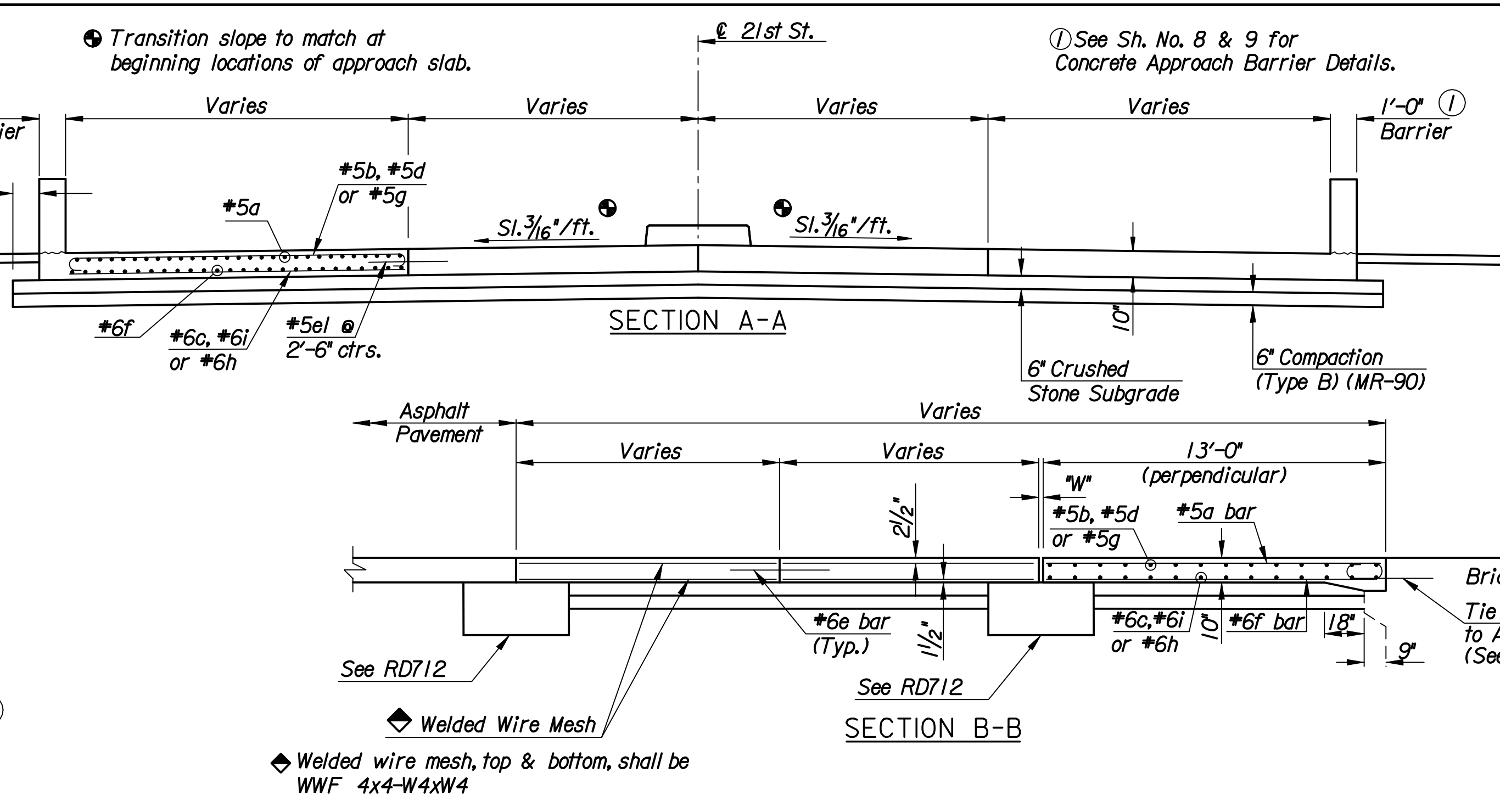
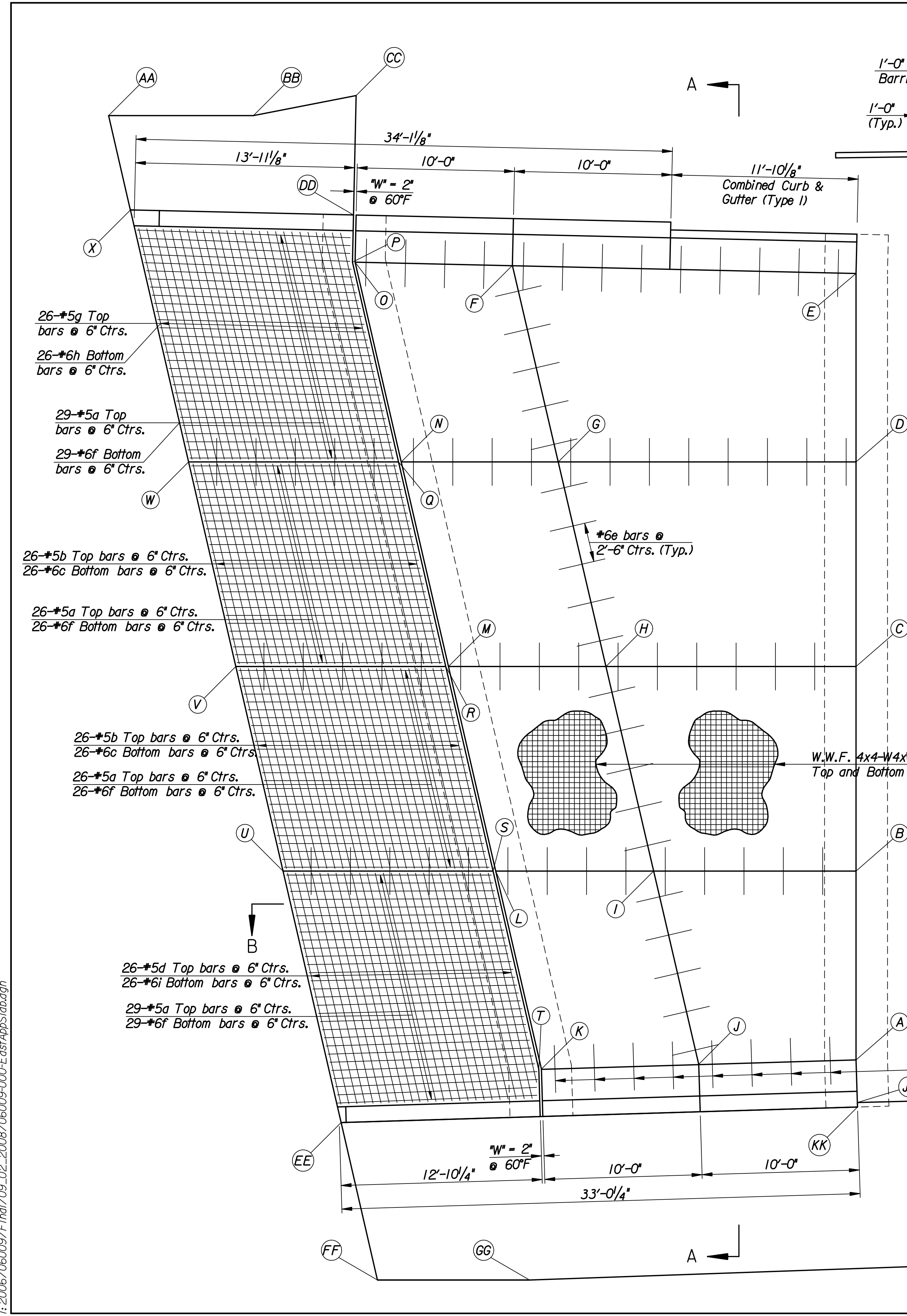


STATE	PROJECT NO.	YEAR	SHEET NO.	TOTAL SHEETS
KANSAS	472-84748	2008	7	52
KDOT PROJECT NO. 87 N-0429-01				



26-#5g Top bars @ 6' Ctrs.
26-#6h Bottom bars @ 6' Ctrs.

29-#5a Top bars @ 6' Ctrs.
29-#6f Bottom bars @ 6' Ctrs.

26-#5b Top bars @ 6' Ctrs.
26-#6c Bottom bars @ 6' Ctrs.

26-#5a Top bars @ 6' Ctrs.
26-#6f Bottom bars @ 6' Ctrs.

26-#5b Top bars @ 6' Ctrs.
26-#6c Bottom bars @ 6' Ctrs.

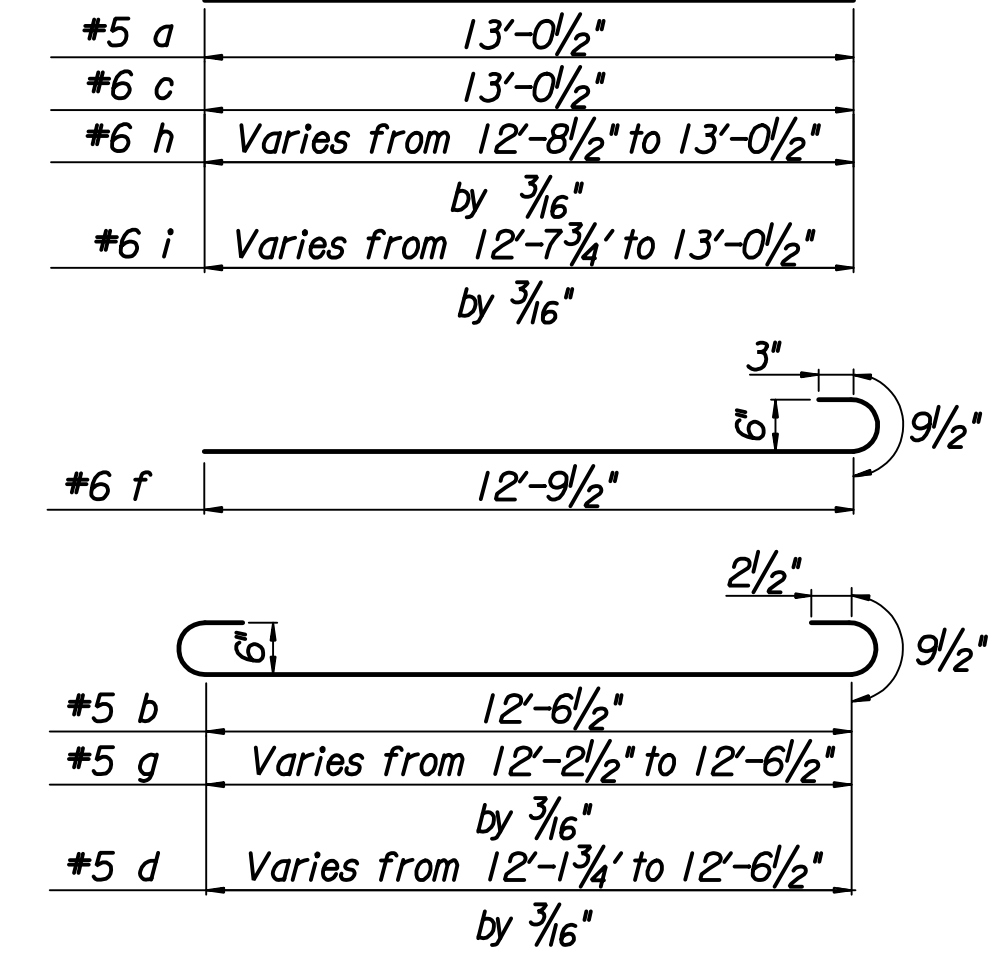
26-#5a Top bars @ 6' Ctrs.
26-#6f Bottom bars @ 6' Ctrs.

26-#5d Top bars @ 6' Ctrs.
26-#6i Bottom bars @ 6' Ctrs.

29-#5a Top bars @ 6' Ctrs.
29-#6f Bottom bars @ 6' Ctrs.

TABLE OF COORDINATES

LOCATION	NORTH COORDINATE	EAST COORDINATE
A	9974.5627	10451.3666
B	9986.5602	10451.3666
C	9999.5602	10451.3666
D	10012.5601	10451.3666
E	10024.5356	10451.3666
F	10025.0498	10429.5298
G	10012.5601	10432.4426
H	9999.5602	10435.4745
I	9986.5602	10438.5064
J	9974.2791	10441.3706
K	9973.9789	10431.3751
L	9986.5602	10428.4705
M	9999.5602	10425.4692
N	10012.5601	10422.4679
O	10025.2544	10419.5372
P	10025.2583	10419.3652
Q	10012.5601	10422.2968
R	9999.5602	10425.2981
S	9986.5602	10428.2994
T	9973.9572	10431.2090
U	9986.5602	10414.9574
V	9999.5602	10411.9561
W	10012.5601	10408.9549
X	10028.5721	10405.2582

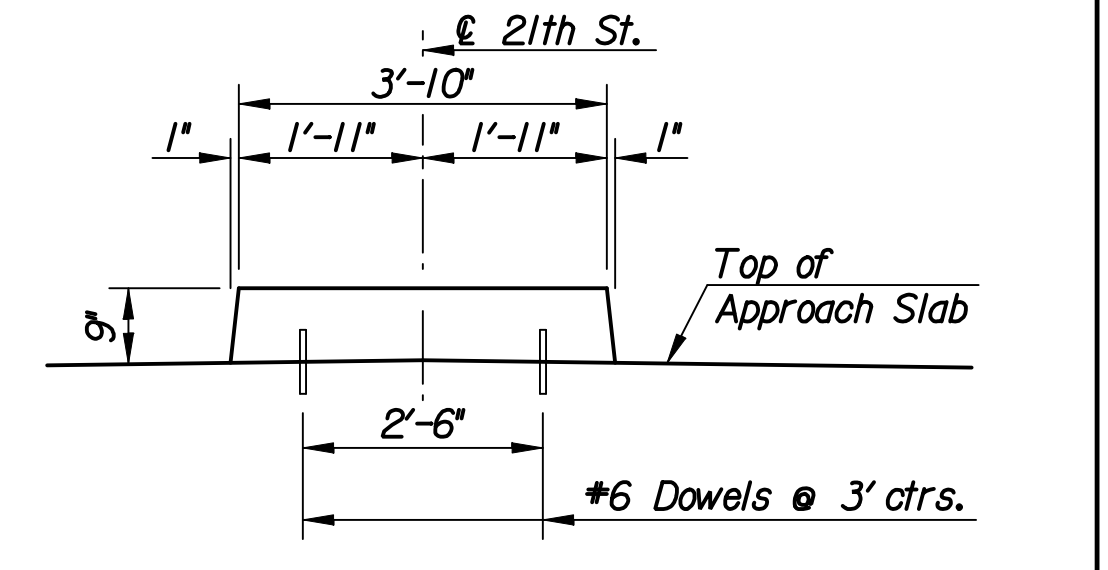


BENDING DIAGRAMS
Note: All dimensions are out to out of bars unless otherwise noted

BAR LIST (ONE END)			
BAR	NO.	SIZE	LENGTH
a	110	#5	13'-0 1/2"
b	52	#5	14'-6 1/2"
c	52	#6	13'-0 1/2"
d	26	#5	Varies
e	20	#6	3'-0"
el	67	#5	3'-0"
f	110	#6	13'-10"
g	26	#5	Varies
h	26	#6	Varies
i	26	#6	Varies

BILL OF MATERIALS (ONE END)		
Item	Quantity	Unit
Reinforcing Steel (Regular)(Gr. 60)	7672	Lbs.
Concrete Pavement (10" Unif.)(AE)	231.2	S.Y.

Note:
Quantities listed are for one approach slab only. The reinforcing steel weight is shown for information only and does not include the welded wire mesh.



MEDIAN DETAIL
8"-#6 Dowels (drill & grout 4" embedment) Sta. 18+66.28 to 19+05.70 (Subsidiary to Approach Slabs)

Type C Expansion Joint only; (See "Expansion Joint Details", Std. No. RD712).

The thermal movement at the abutment is +/- 1/4 inch. "W" = 2 inches; See table below for adjusted "W" values. "W" is the formed gap. The temperatures in the table below are the average ambient temperature over the last 24 hours.

Temp. (F°)	30°	40°	50°	60°	70°	80°	90°
"W", (in.)	2 1/4"	2 1/8"	2 1/8"	2"	1 7/8"	1 7/8"	1 3/4"

GENERAL NOTES
Special Concrete Bridge Approach shall be paid for as Sq.Yds. of "Concrete Pavement (10" Uniform)(AE)" and includes all work and materials required to construct the approach slab shown on this sheet. All concrete shall be Concrete Grade (4.0)(AE).

TABLE OF COORDINATES

LOCATION	NORTH COORDINATE	EAST COORDINATE
AA	10034.5721	10403.8730
BB	10034.5721	10413.0763
CC	10035.8467	10419.6043
DD	10028.2575	10419.4329
EE	9970.5785	10418.6471
FF	9960.5721	10420.9568
GG	9960.5721	10430.6223
HH	9962.8568	10495.5822
II	9972.8568	10495.5822
JJ	9971.8535	10451.4479
KK	9971.5641	10451.4566

drawn by: drp
plotted by: msn 9-2-2008
I: 2006/06009/Final/09_02_2008/06009-000-EastAppSlab.dgn

No. _____		Revisions _____		By _____		Date _____	
CITY OF WICHITA							
BR. NO. 430400876500010				STA. 17+62.50			
SPECIAL CONCRETE							
EAST PAVEMENT APPROACH							
21ST STREET OVER LAR							
PROJECT NO. 472-84748				SEDGWICK COUNTY			
Professional Engineering Consultants, P.A.							
303 S. TOPEKA • WICHITA, KANSAS 67202 316-262-2691 • FAX 316-262-3003							
Designed by MSN		Checked by RAS		Date Feb. 2007		Job No. 06009	
Drawn by DRP							