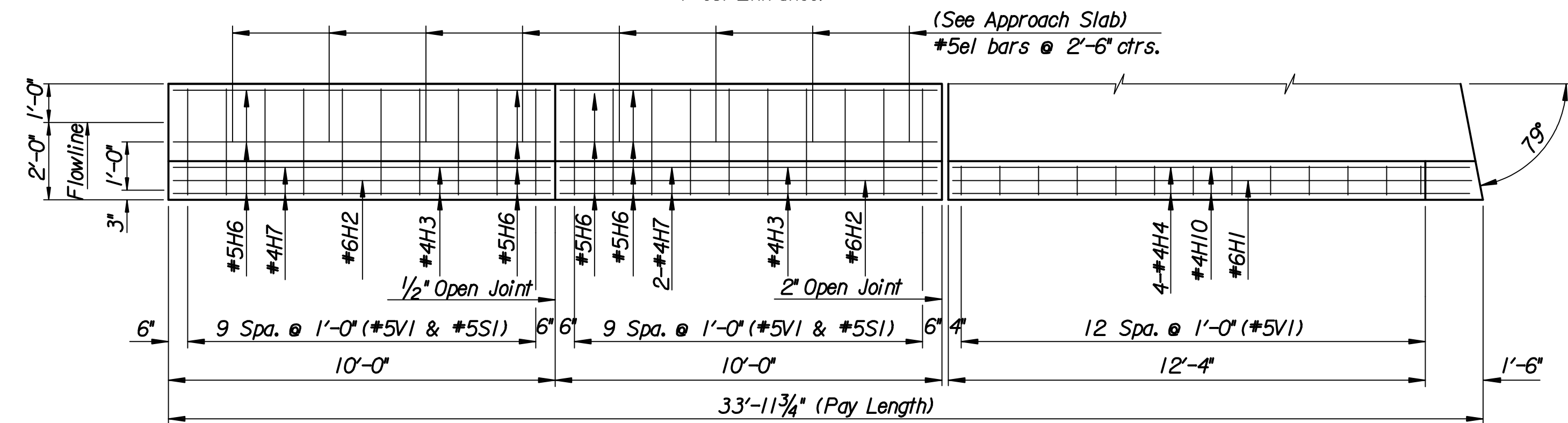
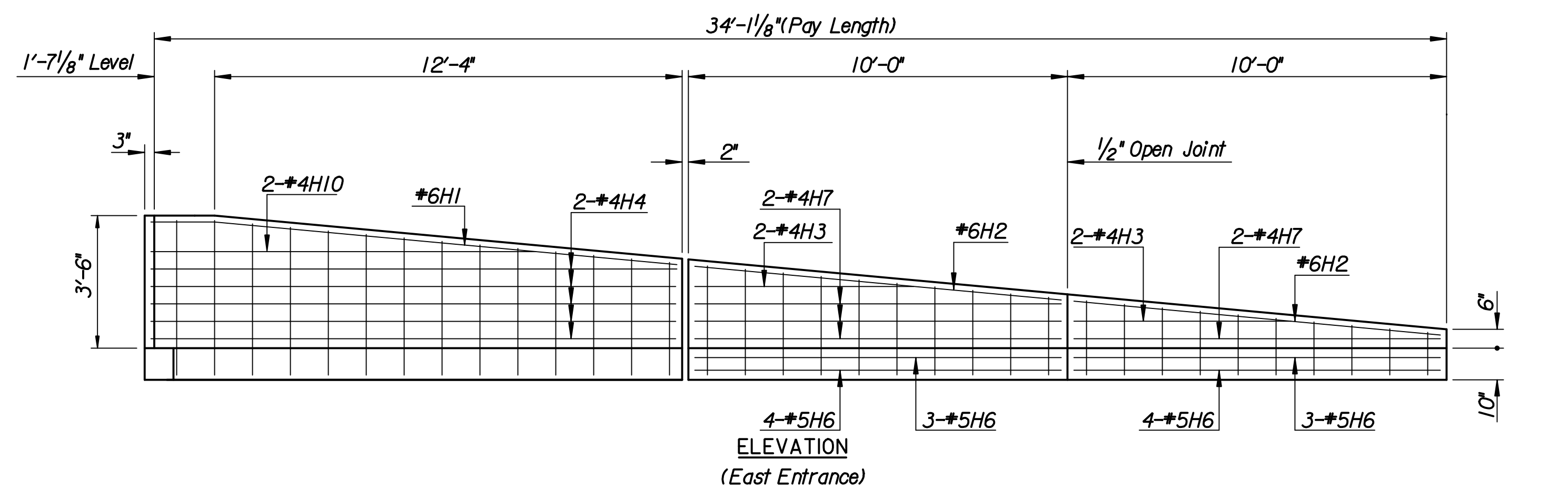


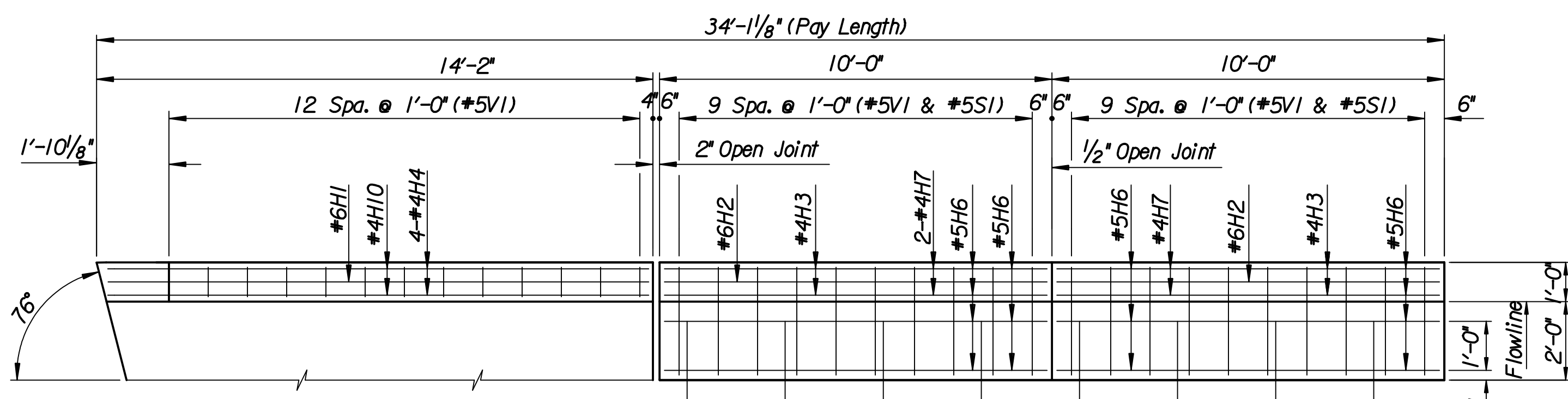
ELEVATION  
(West Entrance)



PLAN  
(West Entrance)

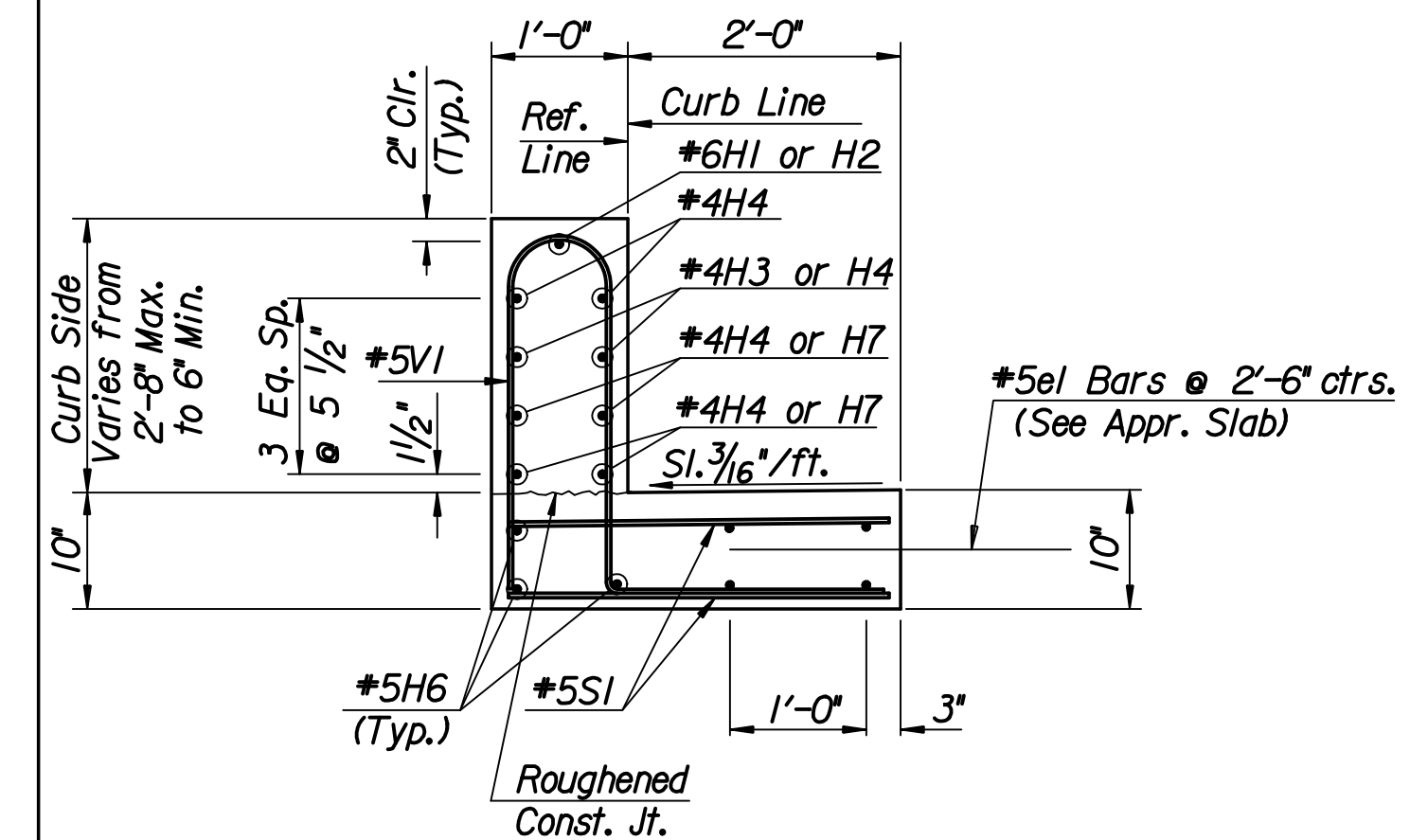


ELEVATION  
(East Entrance)



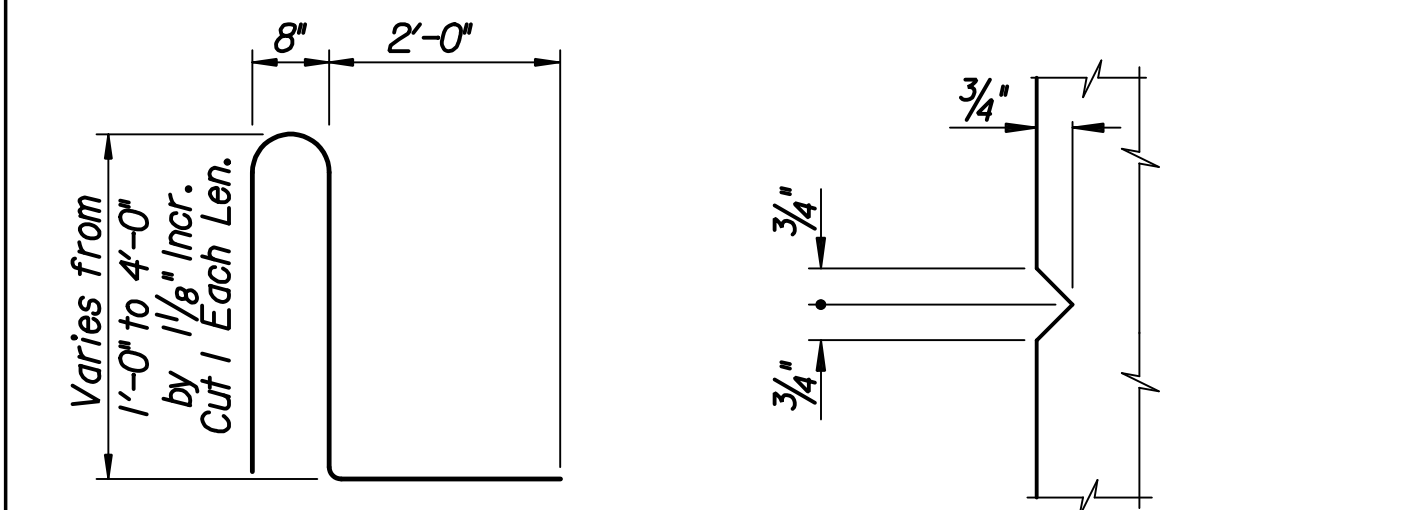
PLAN  
(East Entrance)

BILL OF MATERIALS (ENTRANCE IN WEST)						
REINFORCING STEEL						
Mark	No.	Size	Length	Mark	No.	Size
Typical Exit End (One)						
H1	1	6	13'-5"	H6	14	5
H2	2	6	9'-8"	H7	6	4
H3	2	4	5'-9"	H10	2	4
H4	8	4	13'-6"			
SI	40	5	2'-8"			
VI	33	5	Varies			
* SUMMARY OF QUANTITIES						
Item			Quantity	Unit		
Concrete Grade (4.0)(AE)			4.43	C.Y.		
Reinforcing Steel (Gr. 60)			681.41	Lbs.		
* For Information Only						



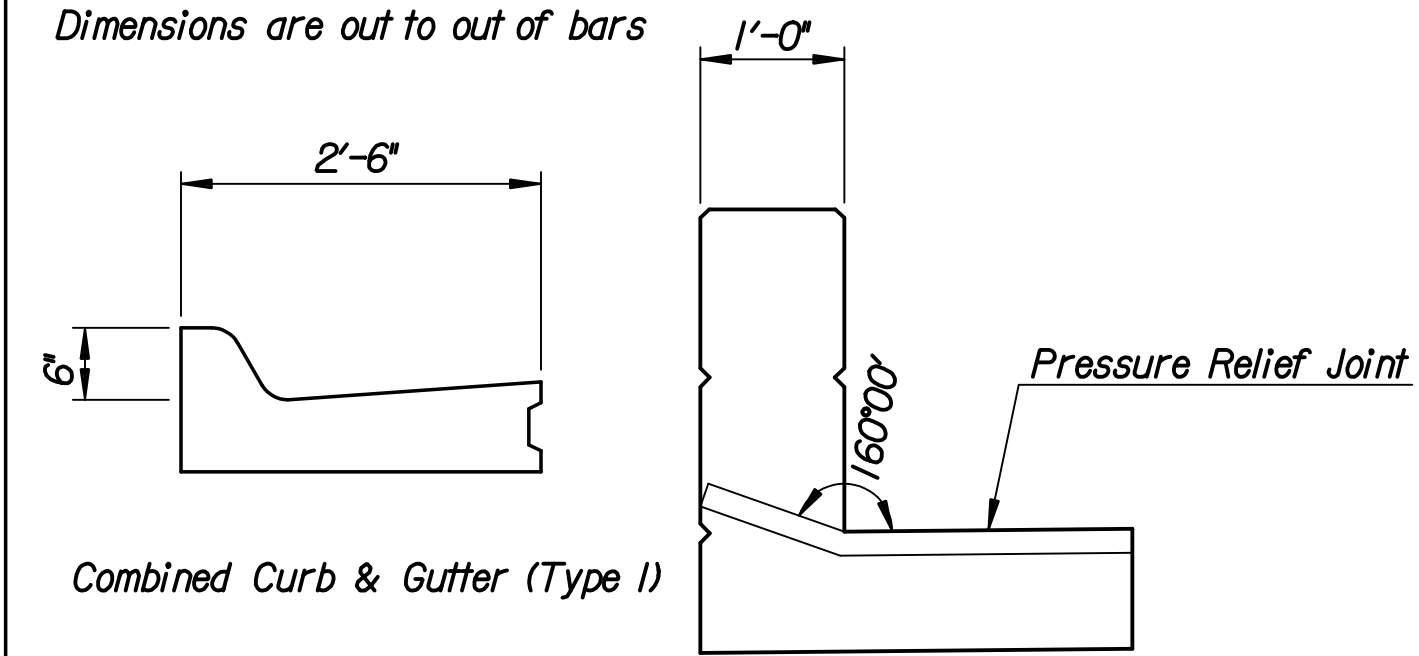
SECTION THRU SAFETY BARRIER  
(TRANSITION)

Adjust F.L. & crossslope in first 5' to meet Combined Curb & Gutter (Type I)



5VI BENDING DIAGRAMS  
Dimensions are out to out of bars

TYPICAL 3/4" TRIANGULAR GROOVE DETAIL



TYPICAL BARRIER JOINT TREATMENT

BILL OF MATERIALS (ENTRANCE IN EAST)						
REINFORCING STEEL						
Mark	No.	Size	Length	Mark	No.	Size
Typical Exit End (One)						
H1	1	6	13'-9"	H6	14	5
H2	2	6	9'-8"	H7	6	4
H3	2	4	5'-9"	H10	2	4
H4	8	4	13'-10"			
SI	40	5	2'-8"			
VI	33	5	Varies			
* SUMMARY OF QUANTITIES						
Item			Quantity	Unit		
Concrete Grade (4.0)(AE)			4.47	C.Y.		
Reinforcing Steel (Gr. 60)			684.13	Lbs.		
* For Information Only						

CONCRETE SAFETY BARRIER (SPECIAL) (AE) NOTES

The "Concrete Safety Barrier (Special)(AE)" shall be constructed of Concrete Grade (4.0)(AE) and A-615 Grade 60 reinforcing steel.

The 3'-6" sections of the barrier shall be grooved with a 3/4" chamfer strip on all exposed edges.

The bid item "Concrete Safety Barrier (Special) (AE)" measured per lined foot as per plan, shall be full compensation for furnishing all materials, equipment and labor necessary.

No.	Revisions	By	Date
<b>CITY OF WICHITA</b> BR. NO. 430400876500010 STA. 17+62.50 <b>CONCRETE SAFETY BARRIER (SPECIAL) (AE) (ENTRANCE END)</b> <b>21ST STREET OVER LAR</b> PROJECT NO. 472-84748 SEDGWICK COUNTY			
<b>Professional Engineering Consultants, P.A.</b> 303 S. TOPKA • WICHITA, KANSAS 67202 316-262-2691 • FAX 316-262-3003			
Designed by	R.A.S.	Checked by	R.A.S.
Drawn by	W.L.L.	Date	Feb. 2007
		Job No.	06009

drawn by: wll  
 plotted by: msn 9-2-2008  
 I: 2006/06009/Final/09\_02\_2008/06009-000 TransBarrierEntrance.dgn