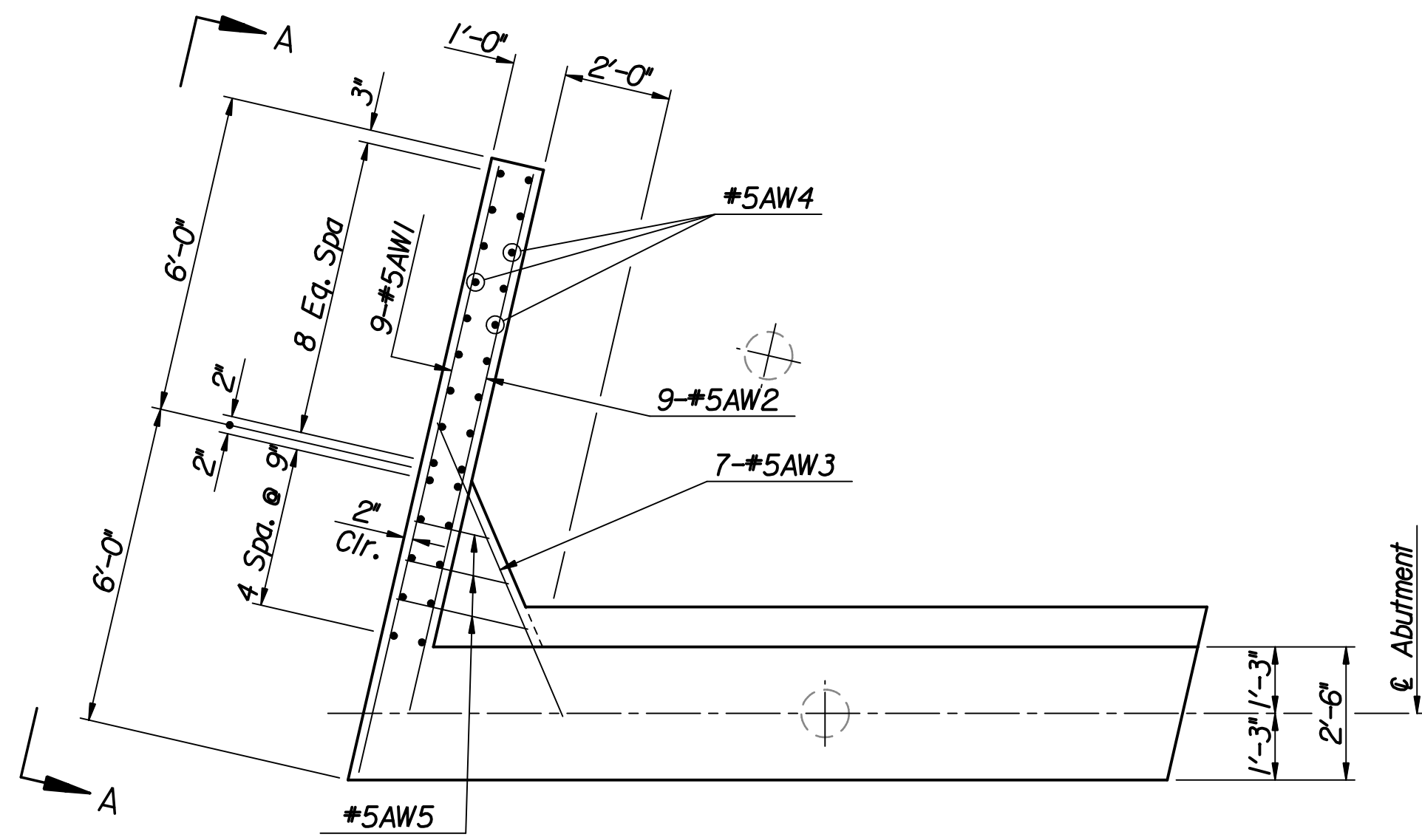
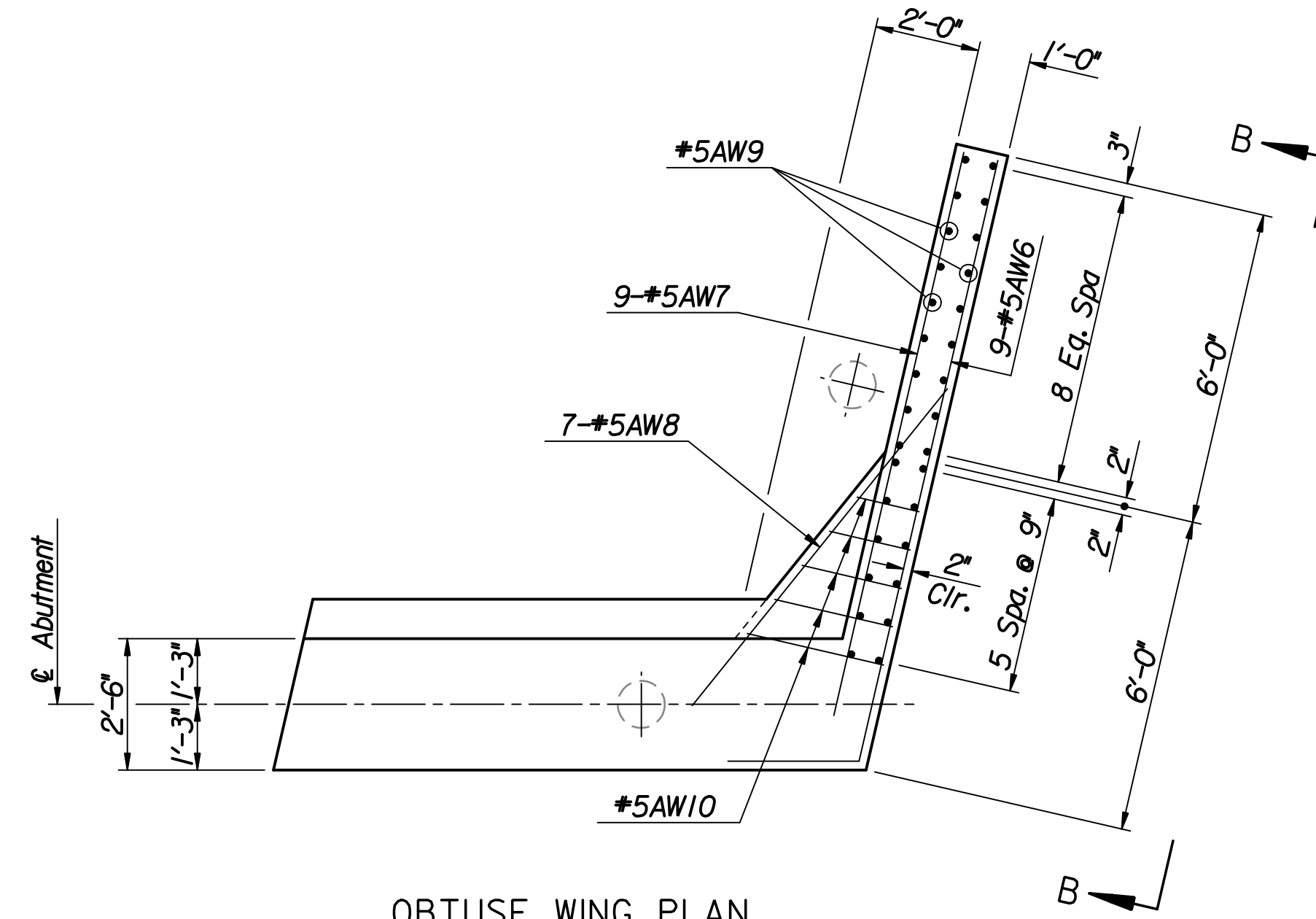


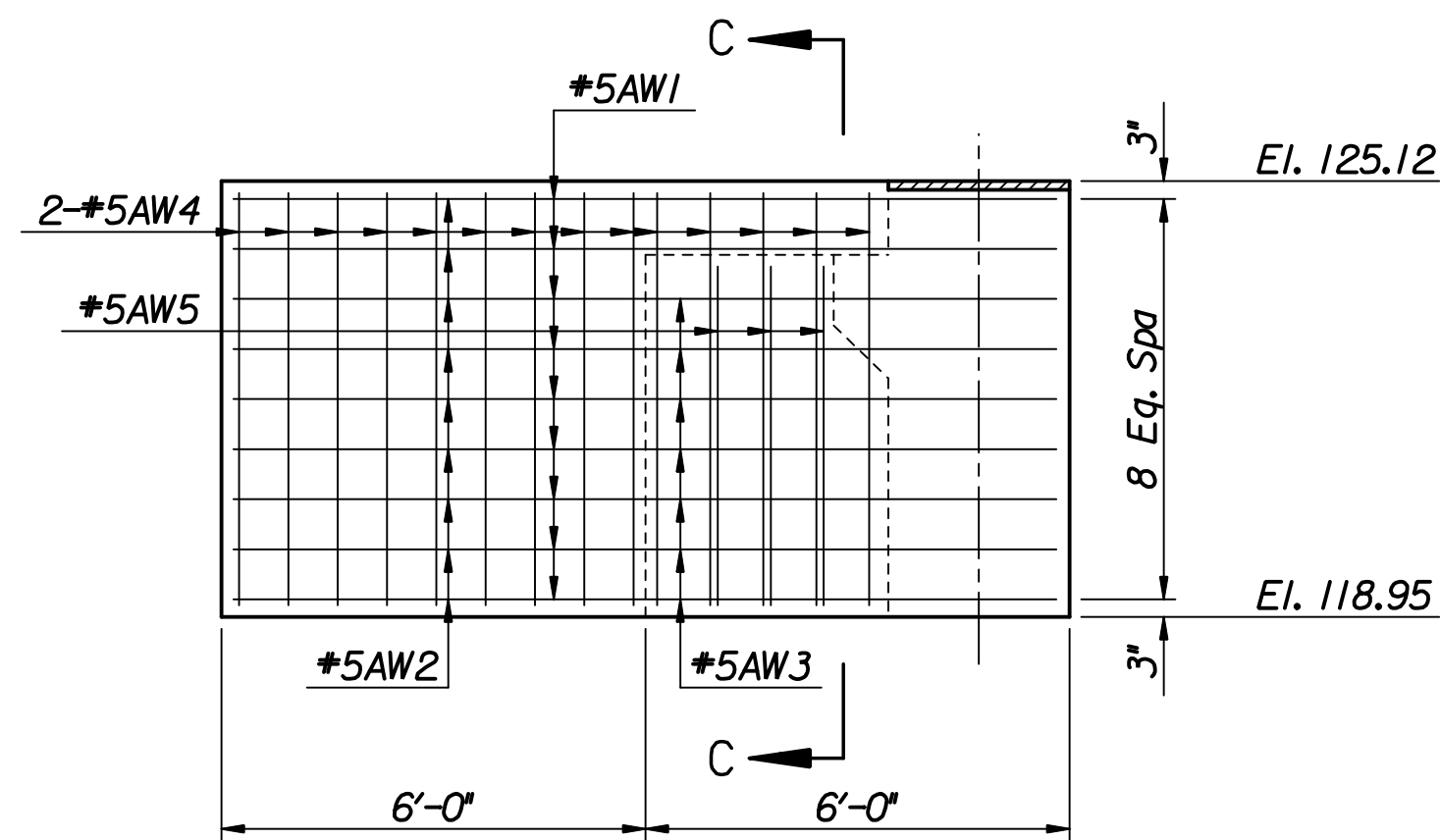
STATE	PROJECT NO.	YEAR	SHEET NO.	TOTAL SHEETS
KANSAS	472-84748	2008	17	52
KDOT PROJECT NO. 87 N-0429-01				



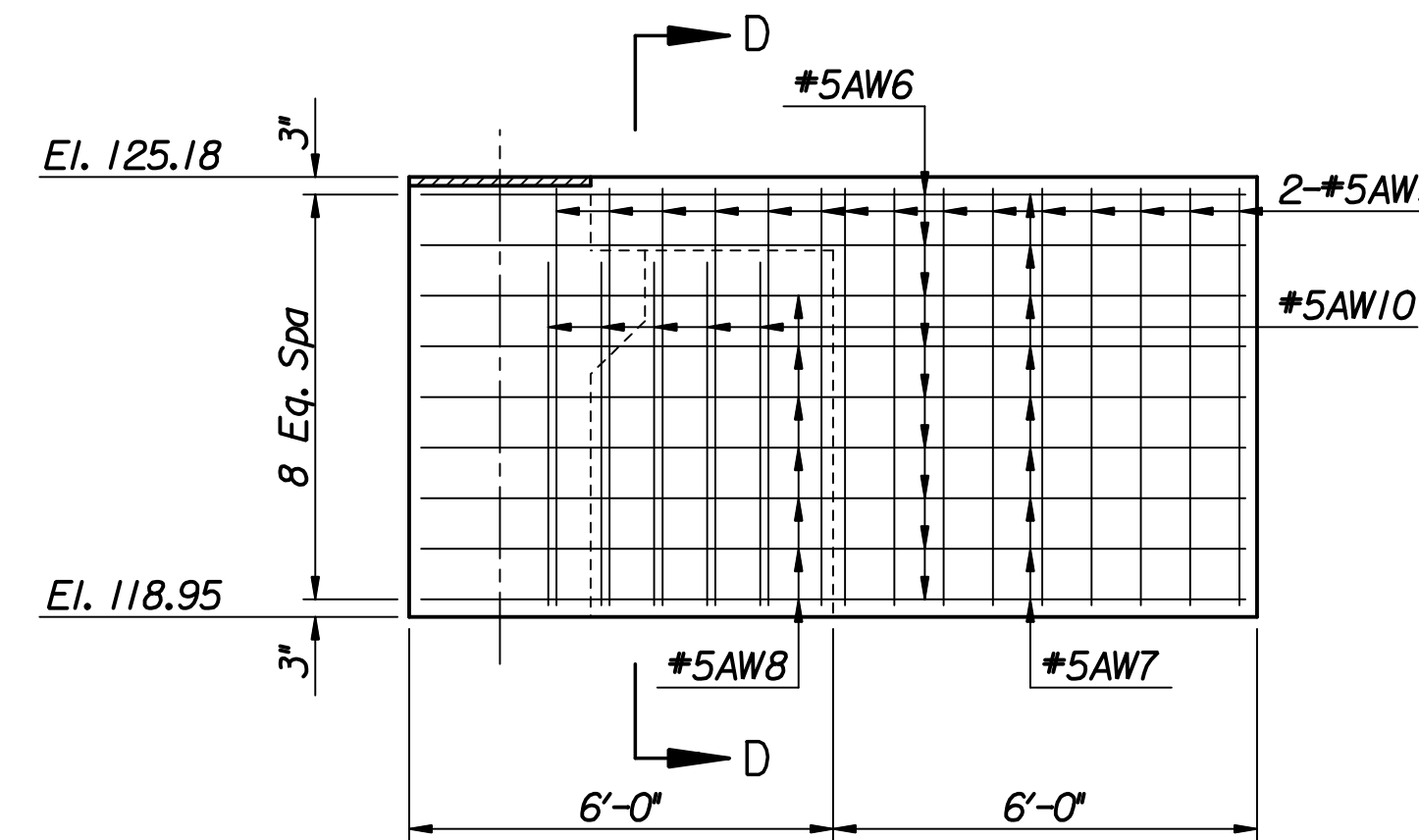
ACUTE WING PLAN



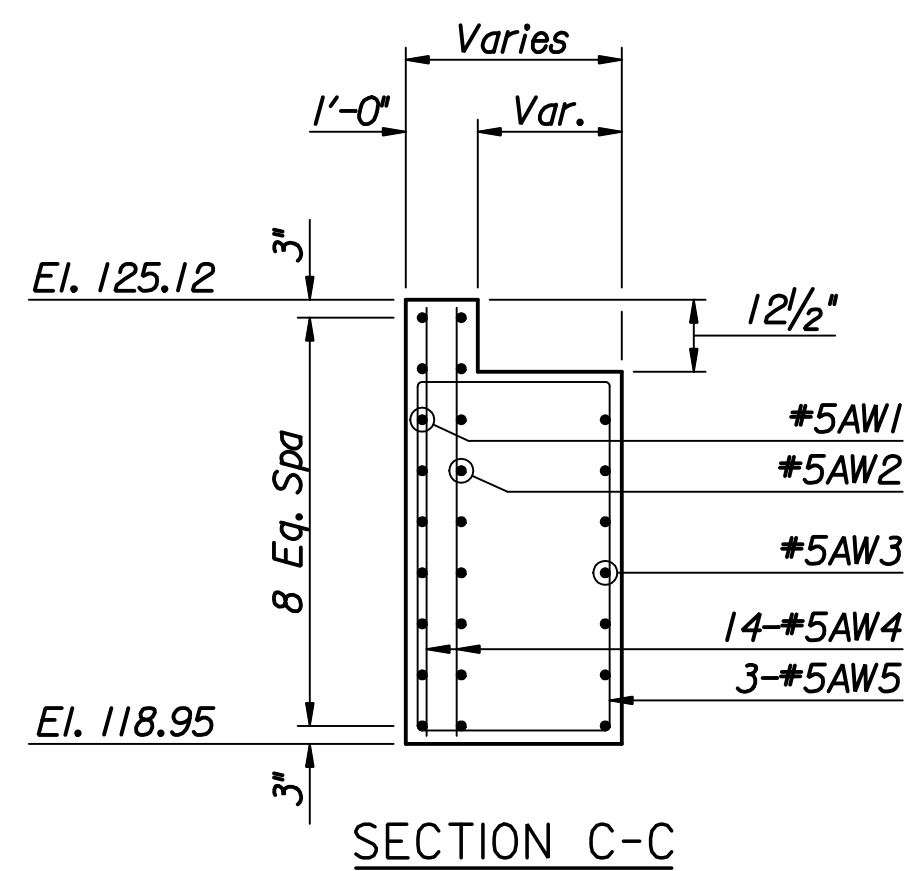
OBTUSE WING PLAN



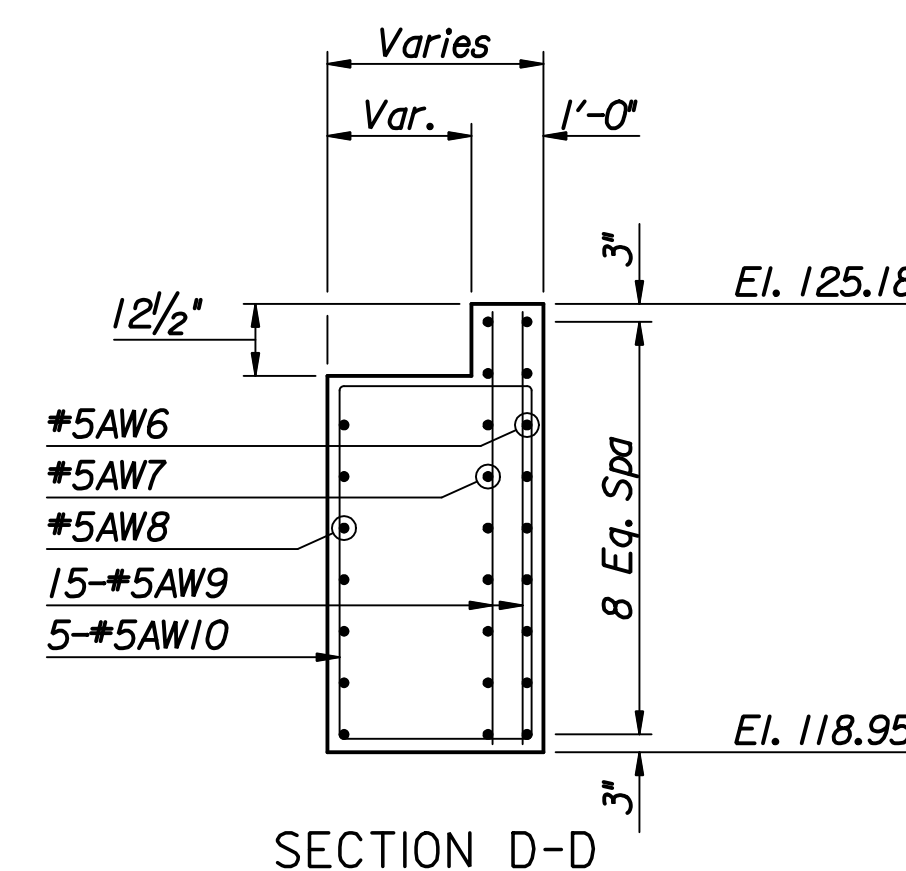
VIEW A-A



VIEW B-B




SECTION C-C



SECTION D-D

plotted by : msn 9-2-2008
drawn by : msn
l:\2006\06009\Final\09_02_2008\06009-000-Abutment-WidenIng.dgn

No.	Revisions	By	Date
CITY OF WICHITA BR. NO. 430400876500010 STA. 17+62.50 PROPOSED ABUTMENT #1 DETAILS 21ST STREET OVER LAR PROJECT NO. 472-84748 SEDGWICK COUNTY			
 Professional Engineering Consultants, P.A. 303 S. TOPEKA • WICHITA, KANSAS 67202 316-262-2691 • FAX 316-262-3003			
Designed by	M.S.N.	Checked by	R.A.S.
Drawn by	M.S.N.	Date	June 2008 Job No. 06009