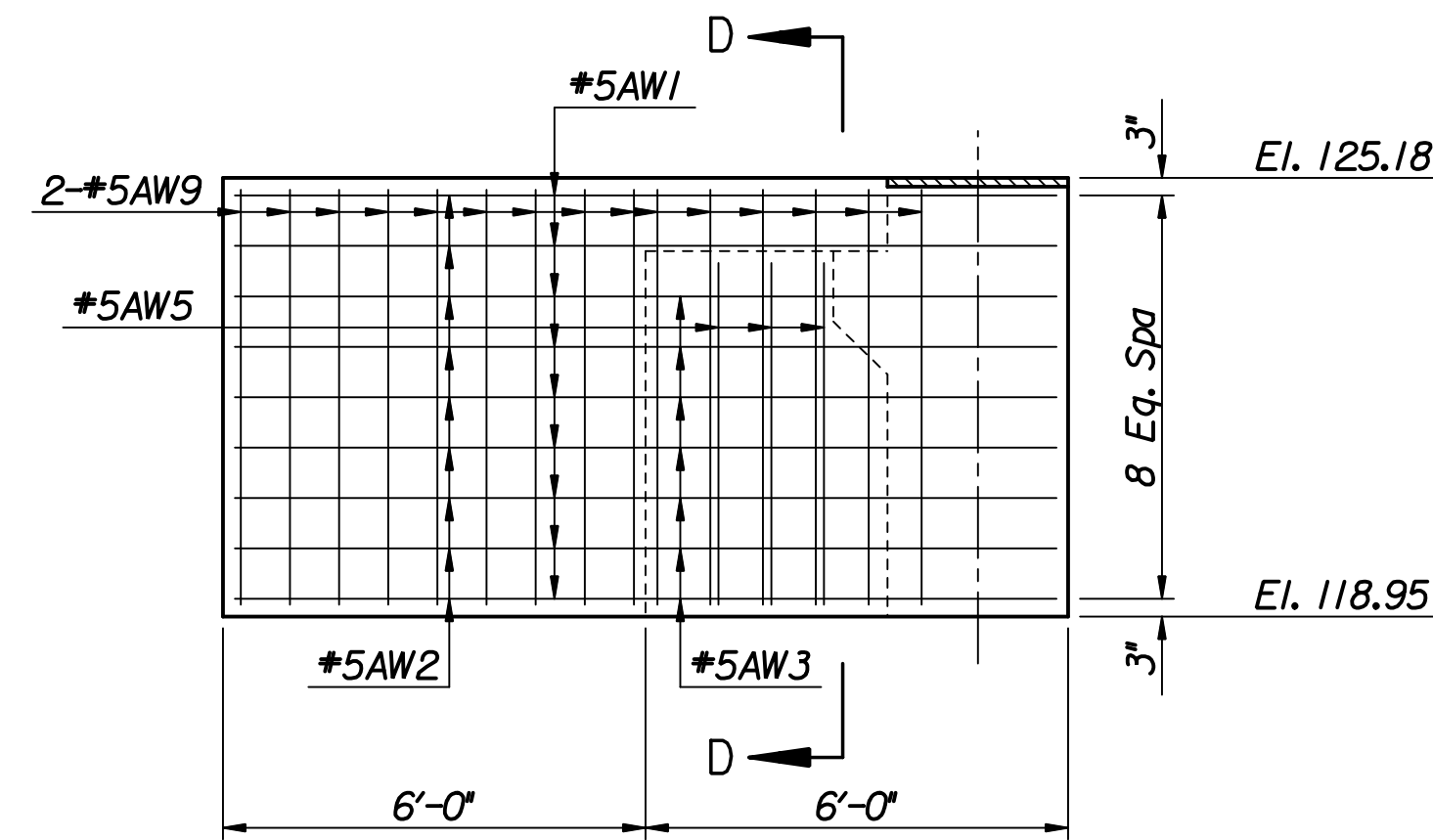
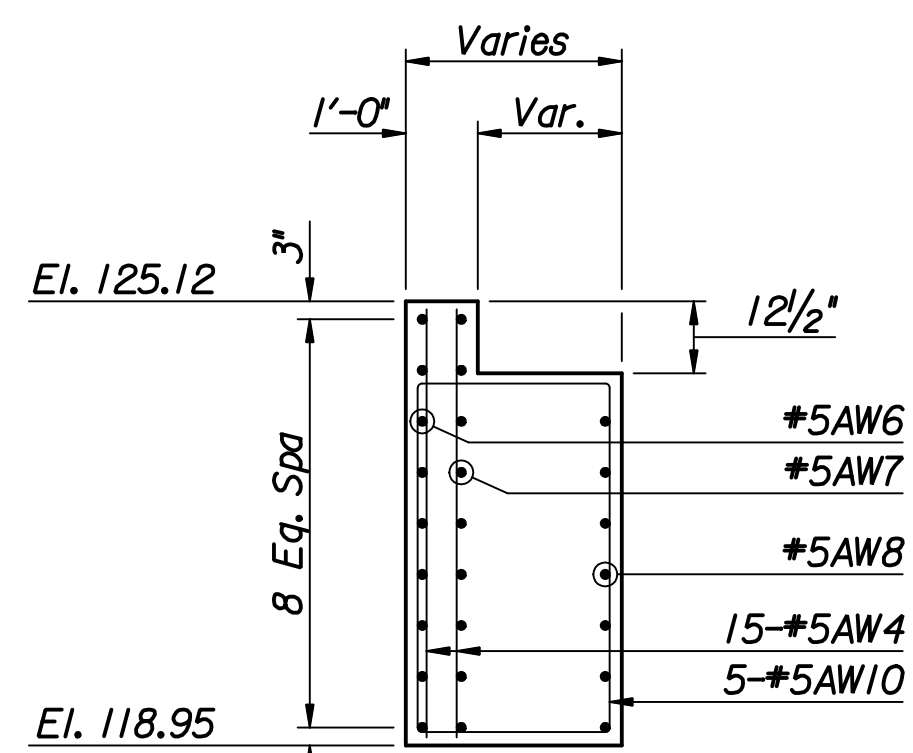


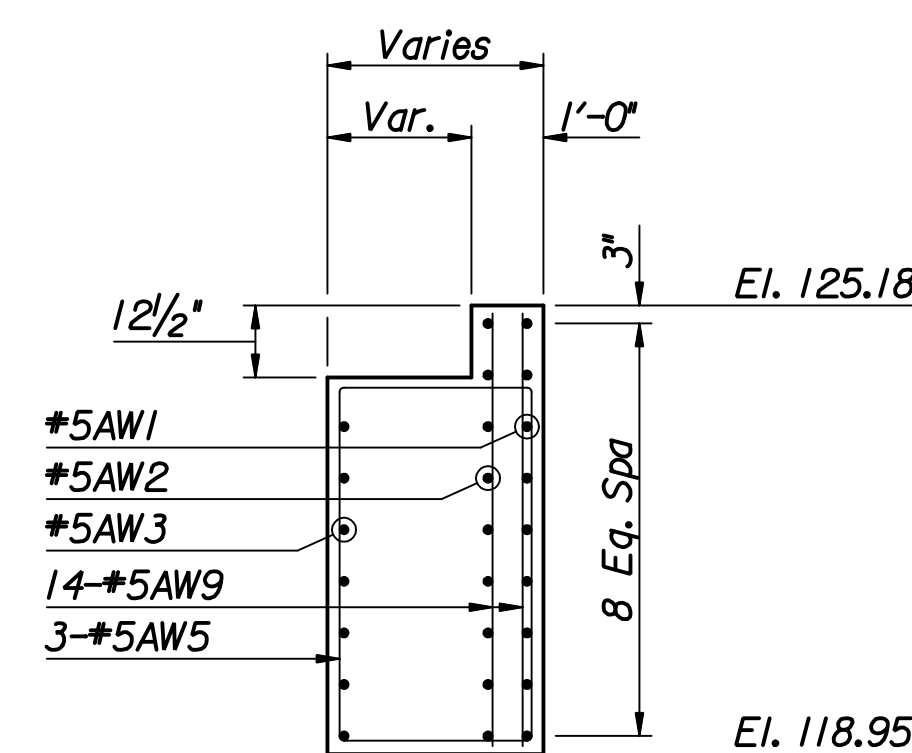
VIEW A-A



VIEW B-B



SECTION C-C



SECTION D-D

Plotted by : msn 9-2-2008
 Drawn by : msn
 I:/2006/06009/Final/09_02_2008/06009-000-Abutment-WidenIng.dgn

| | | | |
|---|-----------|------------|-------------------------|
| No. | Revisions | By | Date |
| CITY OF WICHITA BR. NO. 430400876500010 STA. 17+62.50 PROPOSED ABUTMENT #2 DETAILS 21ST STREET OVER LAR PROJECT NO. 472-84748 SEDGWICK COUNTY | | | |
| Professional Engineering Consultants, P.A. 303 S. TOPEKA • WICHITA, KANSAS 67202 316-262-2691 • FAX 316-262-3003 | | | |
| Designed by | M.S.N. | Checked by | R.A.S. |
| Drawn by | M.S.N. | Date | June 2008 Job No. 06009 |