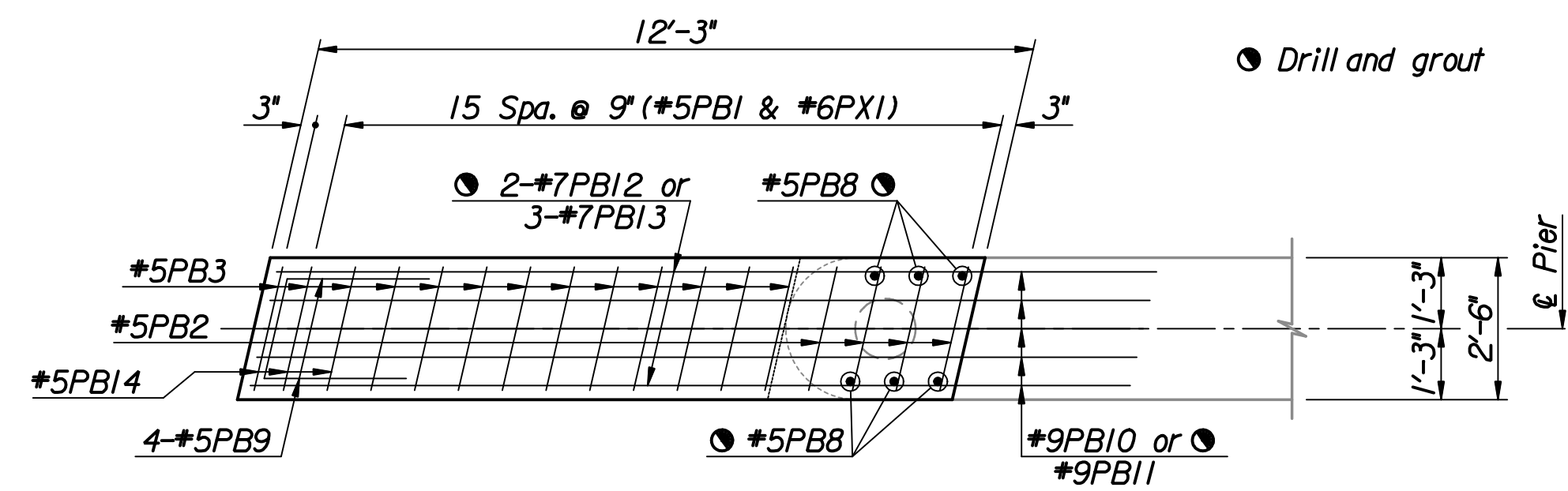
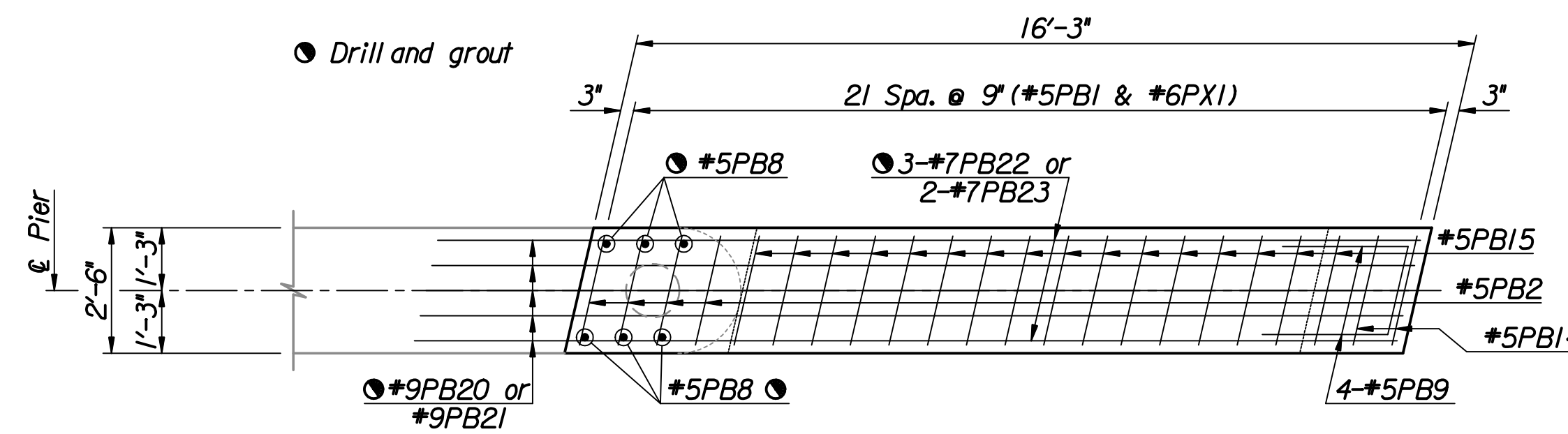


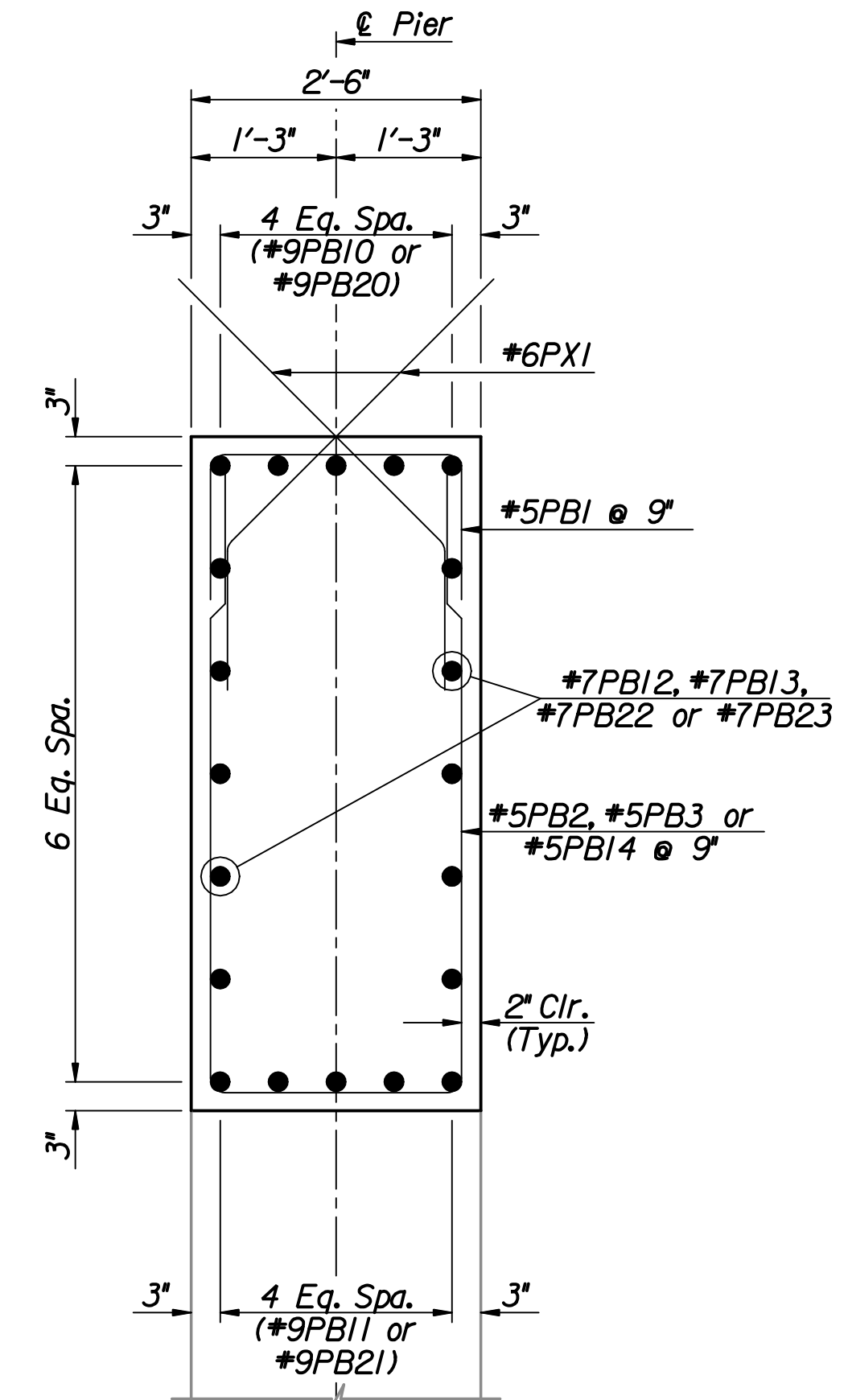
STATE	PROJECT NO.	YEAR	SHEET NO.	TOTAL SHEETS
KANSAS	472-84748	2008	21	52
KDOT PROJECT NO. 87 N-0429-01				



PIER BEAM EXTENSION PLAN



PIER BEAM EXTENSION PLAN

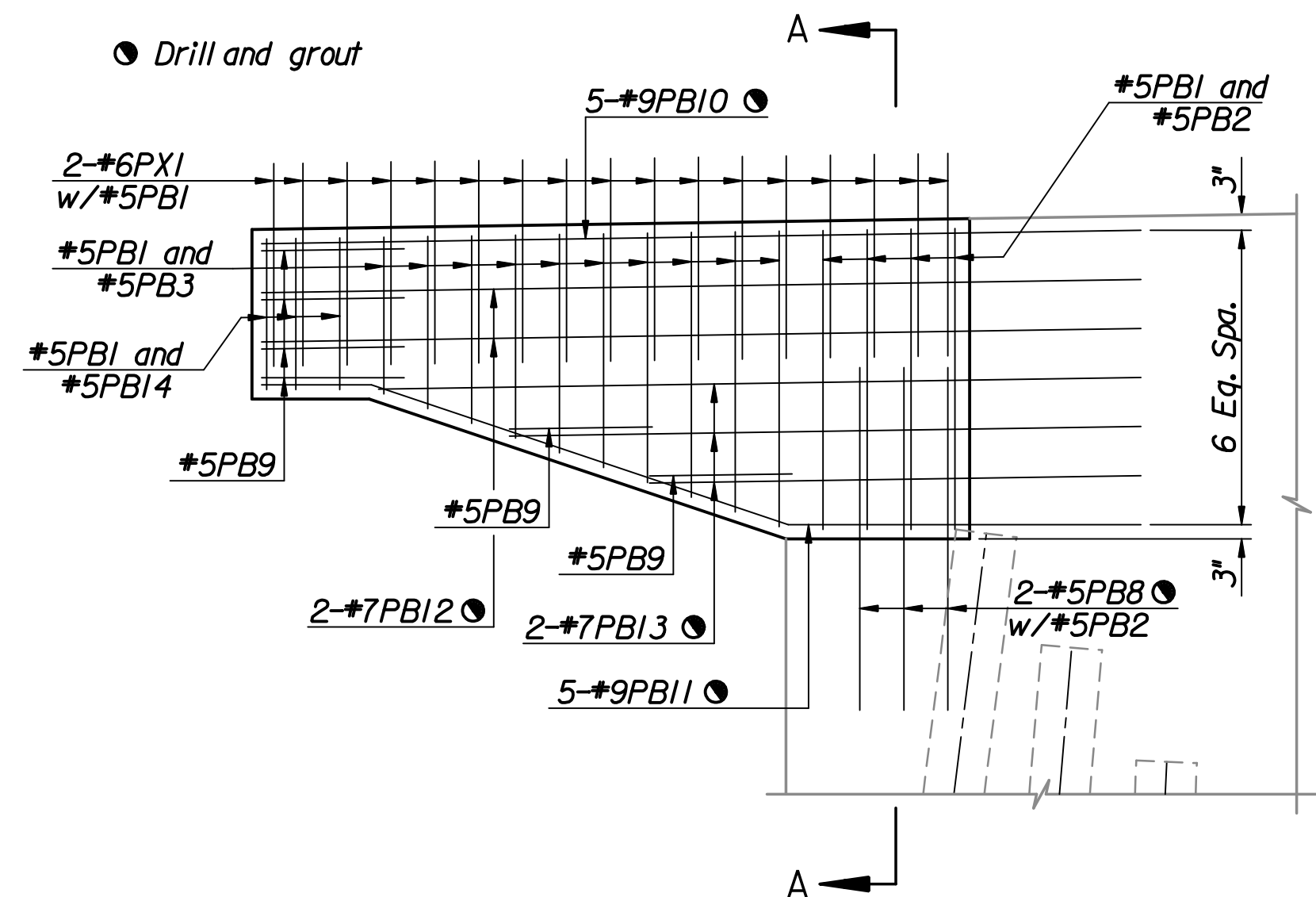


SECTION A-A

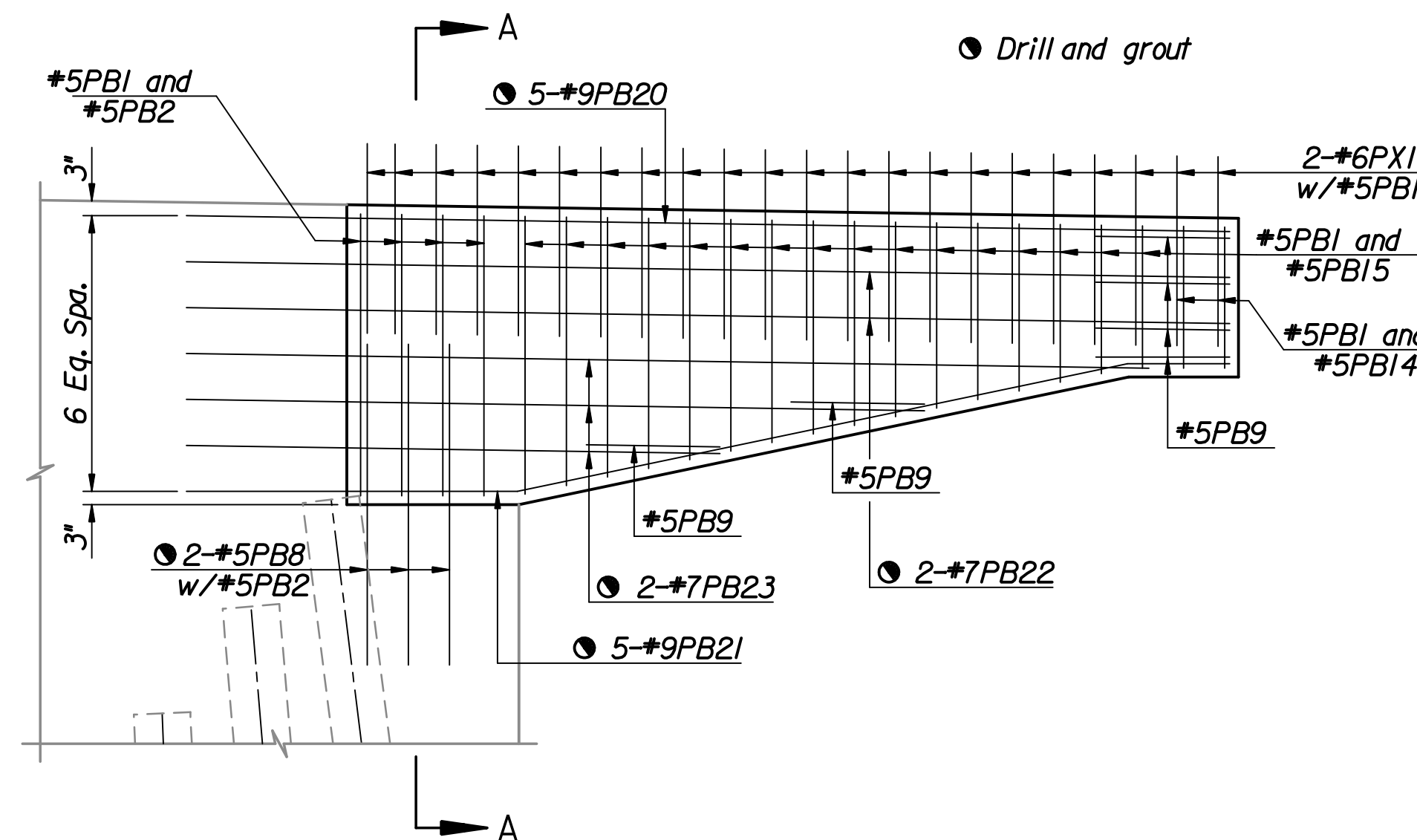
GENERAL NOTES

DRILL & GROUT: This item shall consist of grouting reinforcing steel into the existing concrete, where required by the Engineer, with an epoxy grout. Locate each hole with the aid of a pachometer to miss the existing reinforcing steel. Drill the holes to the specifications required by the grout manufacturer and in such a manner as not to damage adjacent concrete or bars. After the hole is drilled, remove all loose material by using a wire brush to free the dust from the side of the hole and then vacuuming to remove material and dust. Follow the manufacturer's directions for mixing, application and curing.

REINFORCING STEEL: All dimensions relative to reinforcing steel placement are to the centerline of bars unless otherwise noted. Bar bending and dimensions shall be shown and noted on the bending diagrams. The clear distance from face of concrete to near edge or end of reinforcing bar shall be 2" unless otherwise noted. All reinforcing steel shall conform to requirements of ASTM A615, Grade 60.



PIER BEAM EXTENSION ELEVATION



No.	Revisions	By	Date
CITY OF WICHITA BR. NO. 430400876500010 STA. 17+62.50 PIER WIDENING DETAILS PIER #1 AND PIER #4 21ST STREET OVER LAR PROJECT NO. 472-84748 SEDGWICK COUNTY			
Professional Engineering Consultants, P.A. 303 S. TOPEKA • WICHITA, KANSAS 67202 316-262-2691 • FAX 316-262-3003			
Designed by	M.S.N.	Checked by	R.A.S.
Drawn by	M.S.N.	Date	June 2008 Job No. 06009

Plotted by : msn 9-2-2008
 Drawn by : msn
 I:\2006\06009\Final\09_02_2008\06009-000-Pier-Widening.dgn