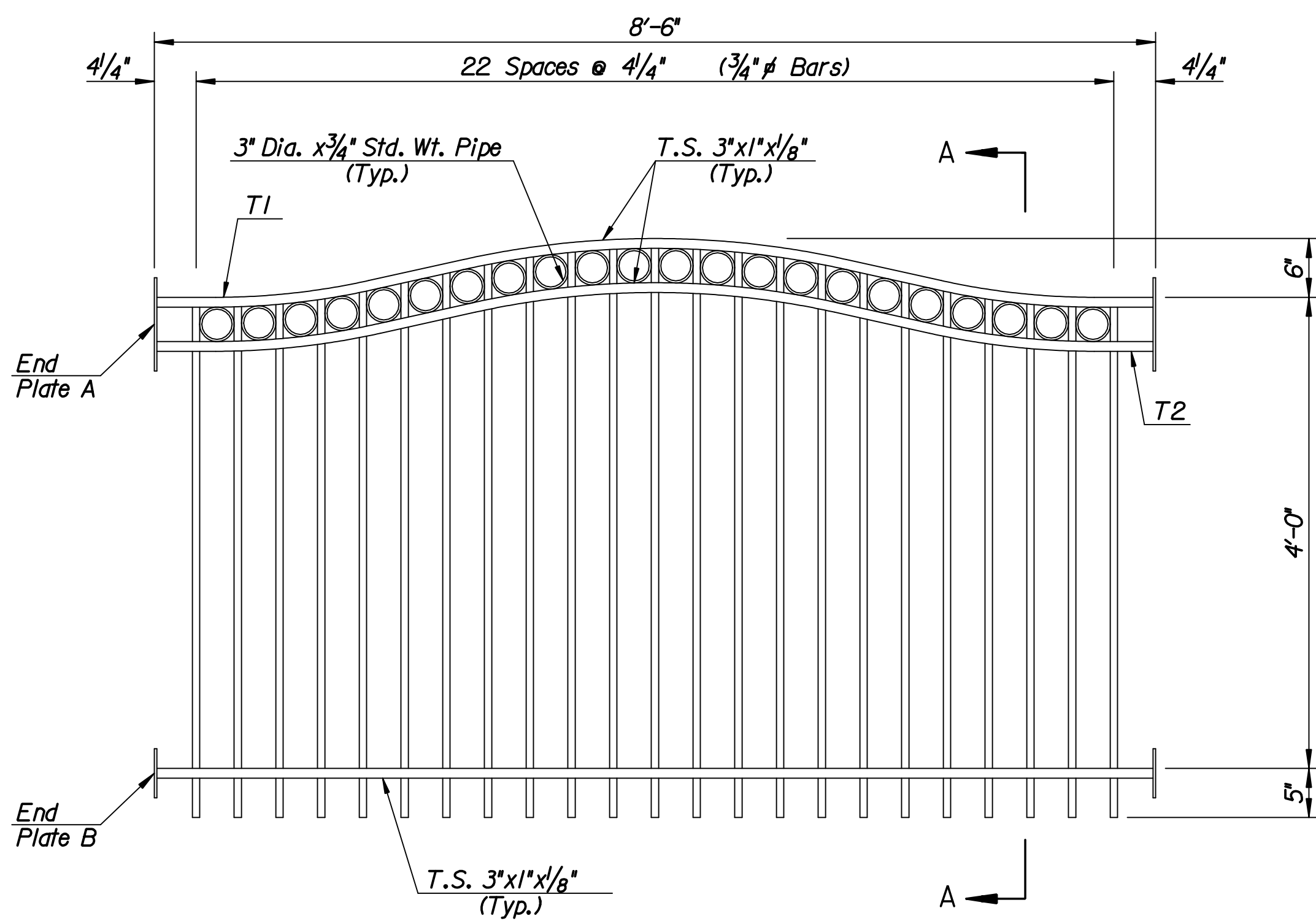
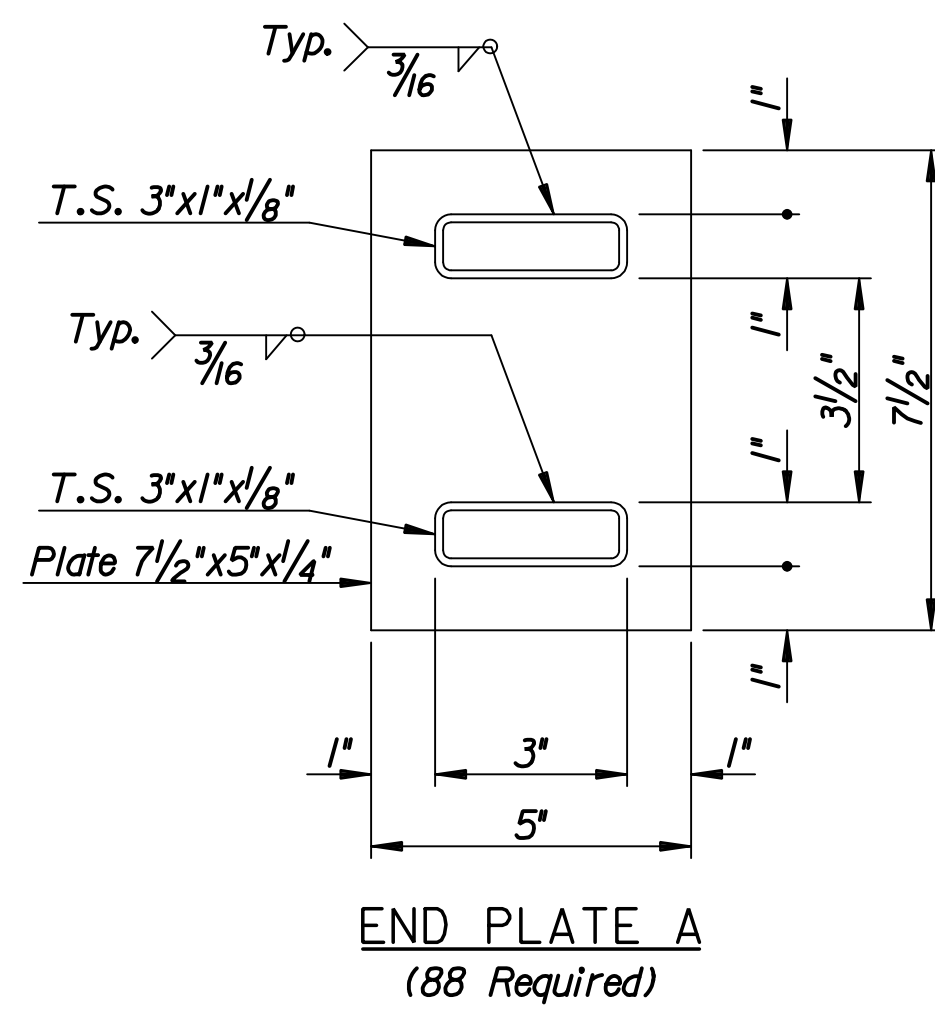


STATE	PROJECT NO.	YEAR	SHEET NO.	TOTAL SHEETS
KANSAS	472-84748	2008	30	52
KDOT PROJECT NO. 87 N-0429-01				

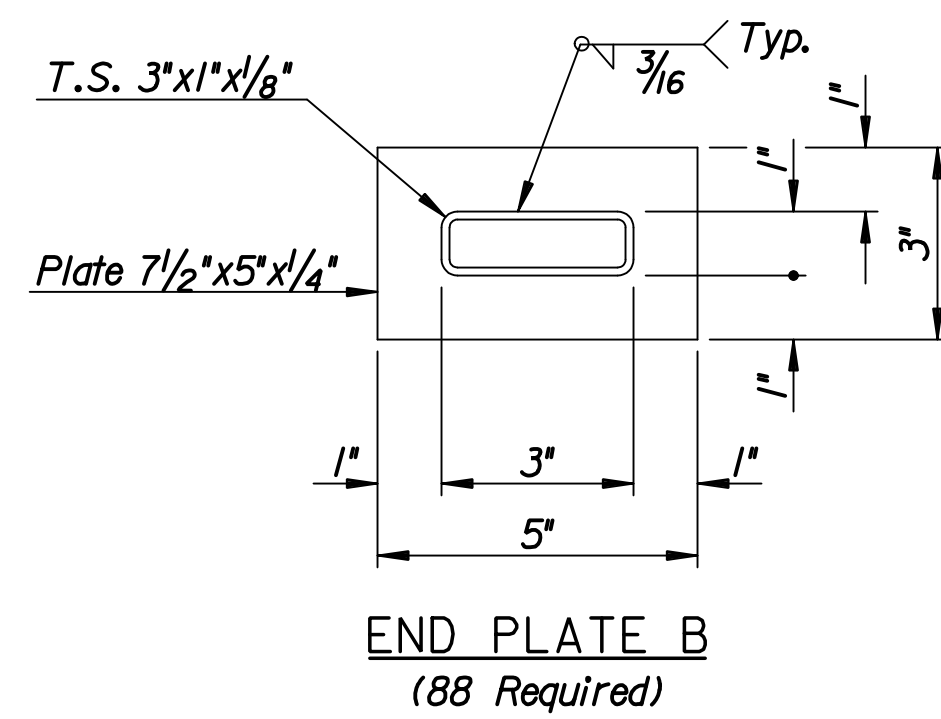


HANDRAIL ELEVATION

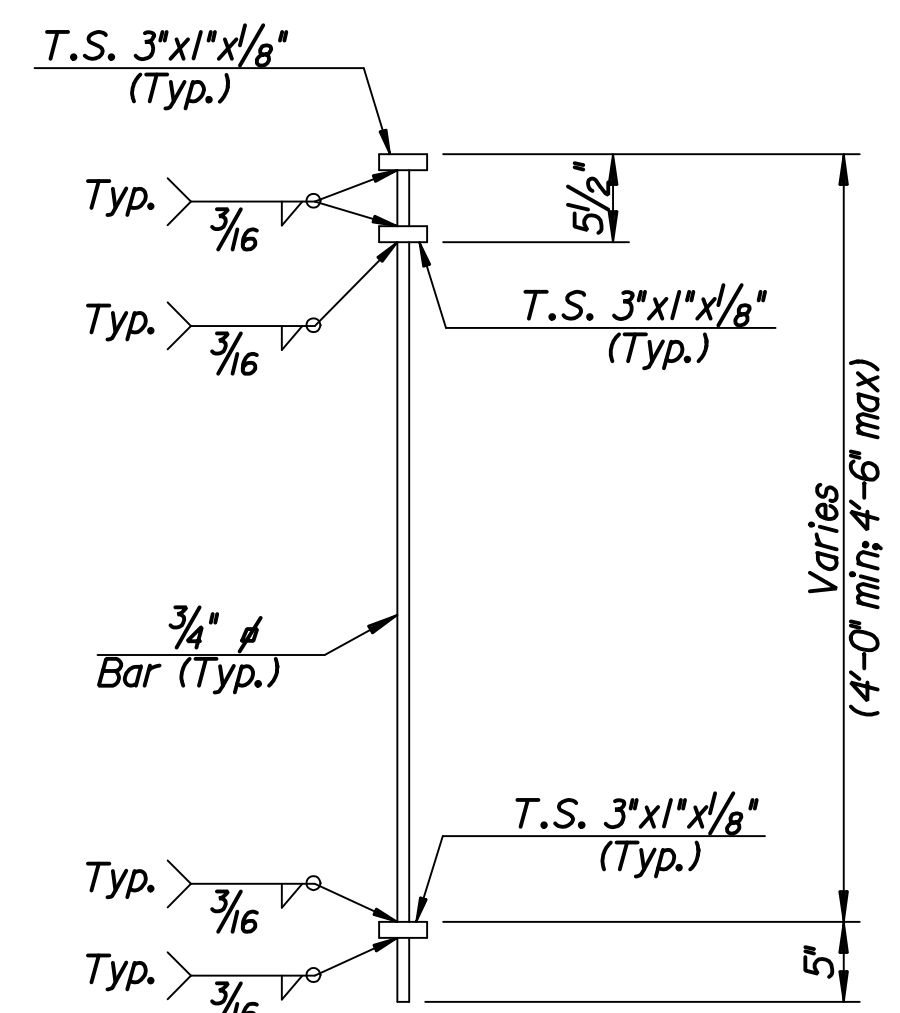
Typical Steel Panel
(44 Required)



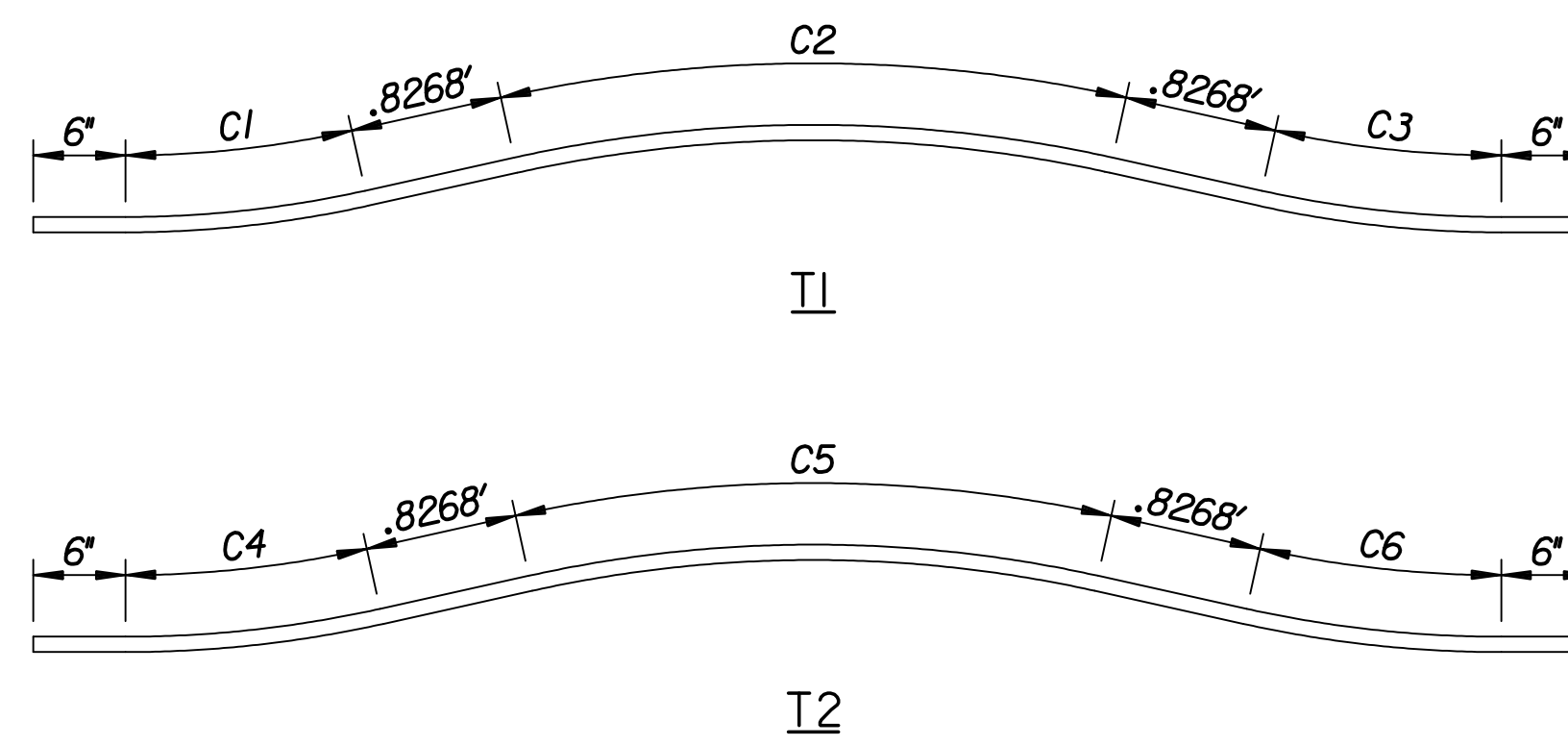
END PLATE A
(88 Required)



END PLATE B
(88 Required)



SECTION A-A



TOP RAIL DIMENSIONS

CURVE DATA

Curve	Radius	Delta
C1	6'-0"	12'-30'-0"
C2	7'-6"	25'-0'-0"
C3	6'-0"	12'-30'-0"

CURVE DATA

Curve	Radius	Delta
C4	6'-4 1/2"	12'-30'-0"
C5	7'-1 1/2"	25'-0'-0"
C6	6'-4 1/2"	12'-30'-0"

GENERAL NOTES

The horizontal members of the rail shall be hollow structural tubing. All structural steel tubing shall comply to A.S.T.M. designation A500 or A513.

Pickets shall be set vertical and shimmed if required.

Rings shall be ground for a tight-fit between horizontal rails and vertical pickets and then tack welded at points of contact on the side opposite of pedestrian traffic.

Handrail shall be constructed by field welding the end plate on the steel handrail to the weld plate embedded in the concrete columns. This connection shall be field painted to match the handrail.

Prior to painting abrasive blast to commercial finish SSPC-SP6 to obtain a surface profile of 1-1/2 Mils. The shop and field coats applied to structural steel shall conform to an inorganic Zinc Primer with water-borne Acrylic finish coat. (The finish coat shall match Carboline C-900) Provide a color sample to the Engineer with shop drawing submittal.

Material and construction shall conform to the structural welding code A.W.S. D1.1-01.

Shop details must be submitted and approved by the Engineer.

All work associated with furnishing and installing Handrail shall be paid for as "Bridge Handrail (Steel)(Special)".

Plotted by : msn 9-2-2008
 Drawn by : msn
 I:/2006/06009/Final/09_02_2008/06009-000-Handrail-Option-B.dgn

No.	Revisions	By	Date
CITY OF WICHITA BR. NO. 430400876500010 STA. 17+62.50 SPECIAL HANDRAIL DETAILS 21ST STREET OVER LAR PROJECT NO. 472-84748 SEDGWICK COUNTY 303 S. TOPEKA • WICHITA, KANSAS 67202 316-262-2691 • FAX 316-262-3003 Designed by M.S.N. Checked by R.A.S. Drawn by M.S.N. Date June 2008 Job No. 06009			