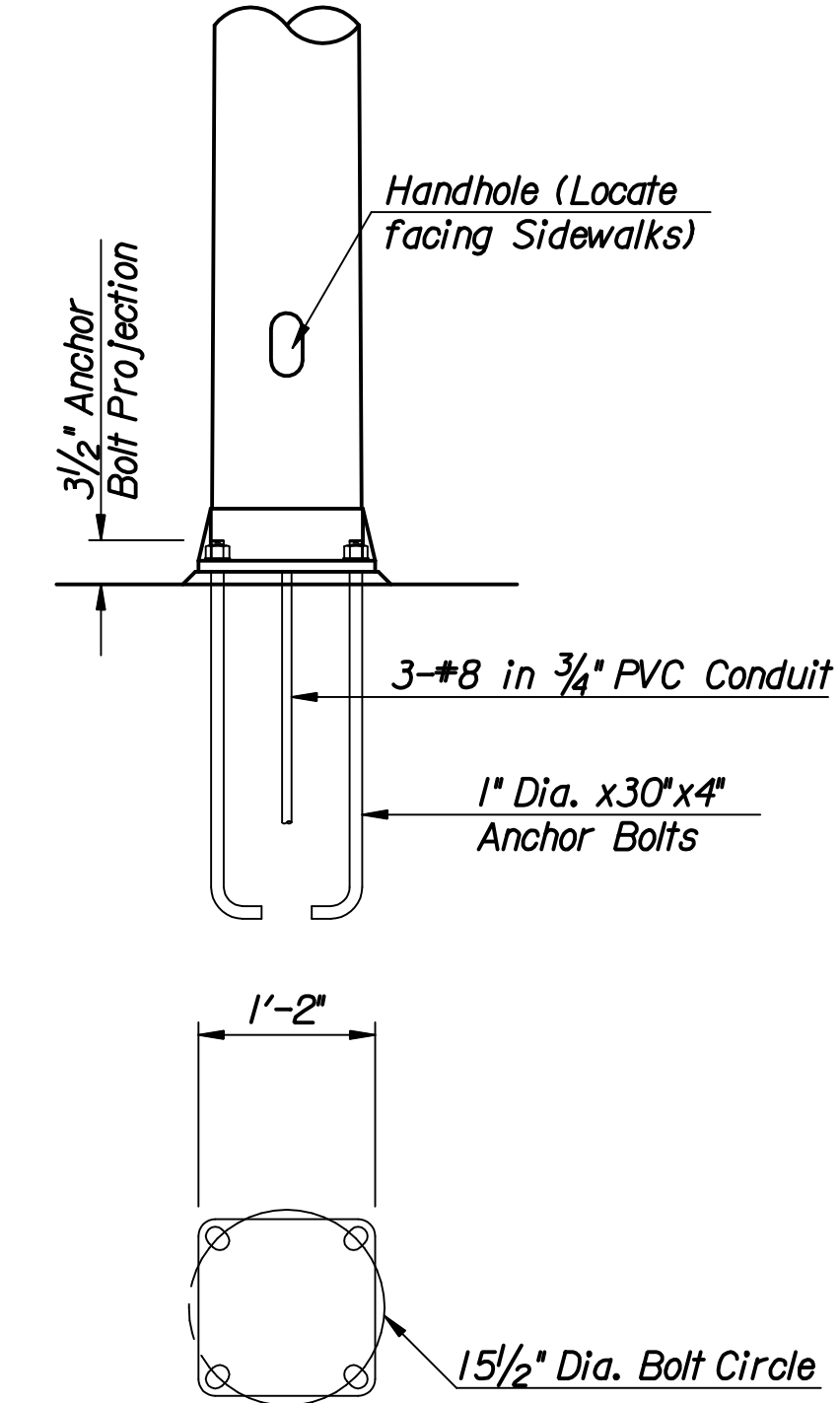
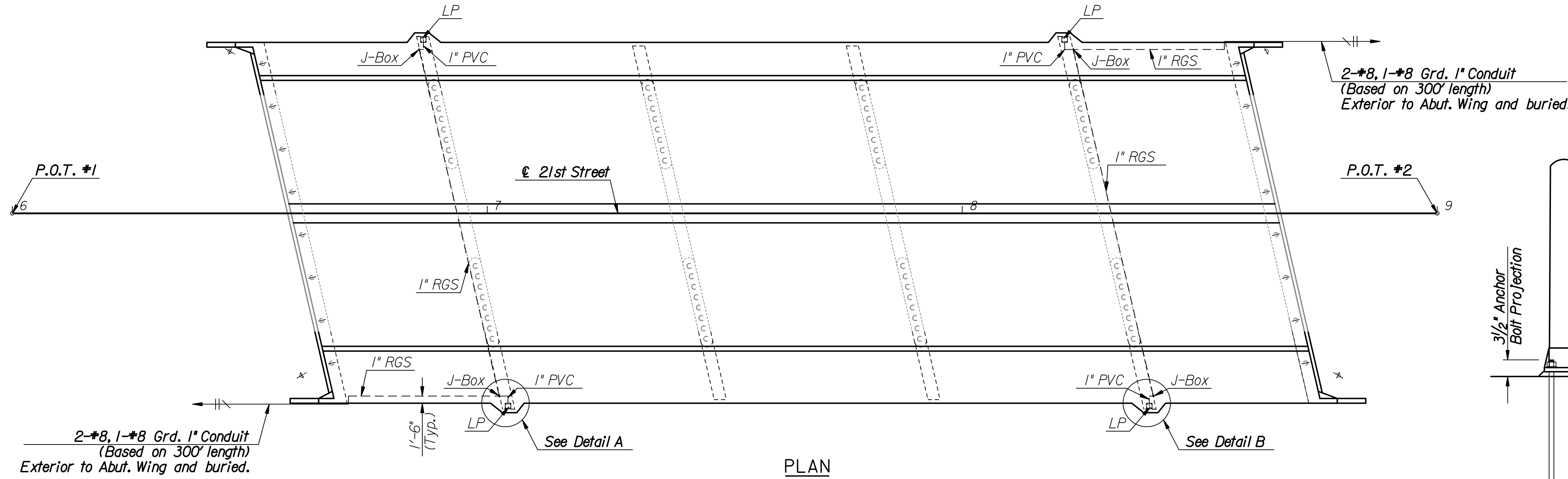


STATE	PROJECT NO.	YEAR	SHEET NO.	TOTAL SHEETS
KANSAS	472-84748	2008	36	52
KDOT PROJECT NO. 87 N-0429-01				

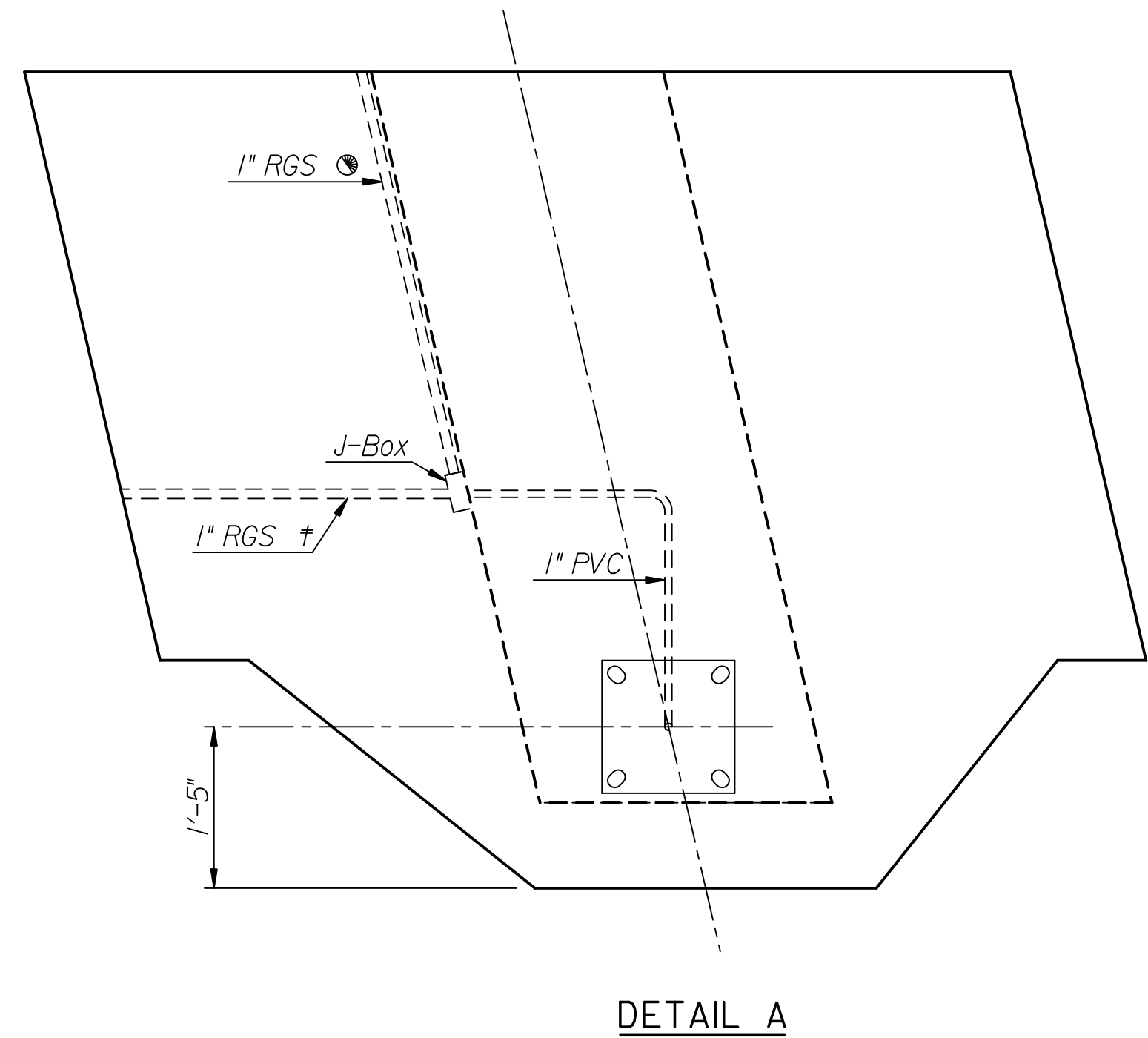


Scale: 1"=15'

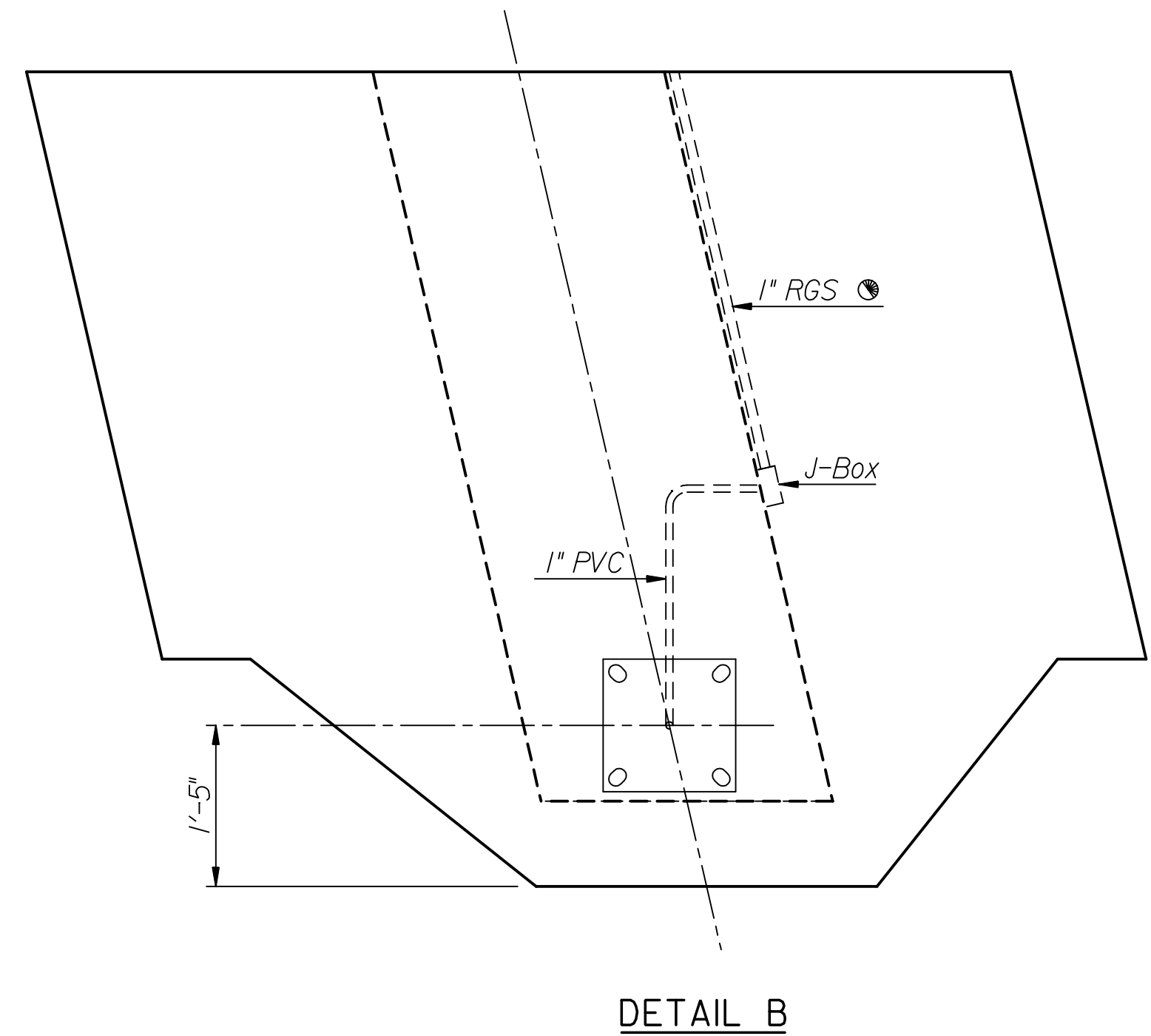
P.O.T. #1 - @ 21st Street
 1. Sta. 16+00.00 (Office Set)
 2. N. 9999.5721 E. 10145.6705

P.O.T. #2 - @ 21st Street
 1. Sta. 19+00.00 (Office Set)
 2. N. 9999.5721 E. 10445.6705

S. 1/4 Sec. Cor. Sec. 6, T27S R1E
 1. Found 3/4" I.P.
 2. N. 10000.0000 E. 8995.4738



† Attach to underside of concrete slab.
 ● Attach to face of pier.



LUMINARE BASE DETAIL

Notes:
 Contractor to provide and install Conduit, Electrical Wiring and Junction Boxes for the Bridge Lighting Fixtures.
 Contractor to obtain, from Westar, and install anchor bolts for the Bridge Lighting Fixtures.
 Westar to provide and install Light Poles and complete electrical connections for the Bridge Lighting Fixtures.

No.	Revisions	By	Date
CITY OF WICHITA			
BR. NO. 430400876500010		STA. 17+62.50	
ELECTRICAL LAYOUT 21ST STREET OVER LAR			
PROJECT NO. 472-84748		SEDGWICK COUNTY	
Professional Engineering Consultants, P.A. 303 S. TOPEKA • WICHITA, KANSAS 67202 316-262-2691 • FAX 316-262-3003			
Designed by	M.S.N.	Checked by	R.A.S.
Drawn by	C.P.	Date	Feb. 2007
		Job No.	06009

Plotted by : msn 9-2-2008
 Drawn by : cp
 I:/2006/06009/Final/09_02_2008/06009-000-Lighting-Layout.dgn