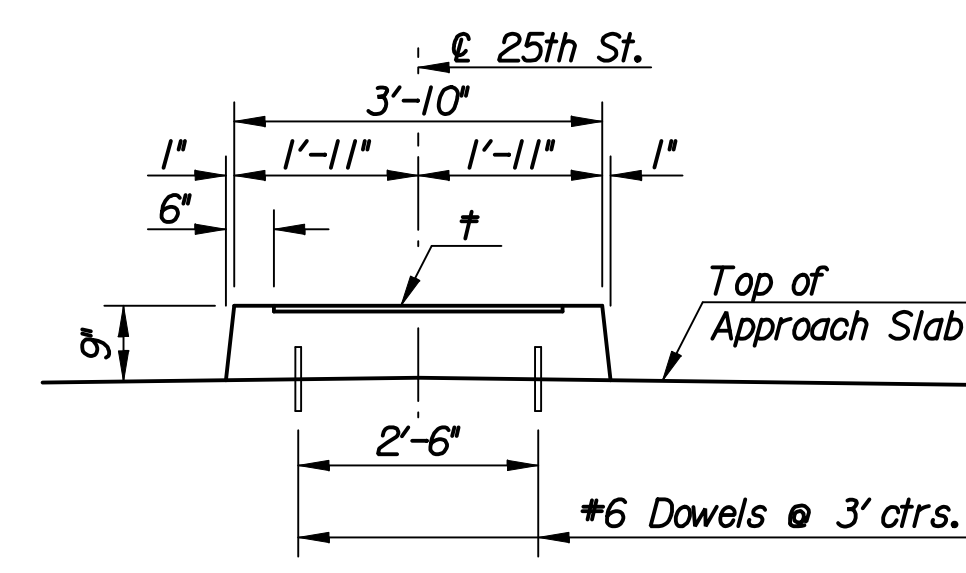
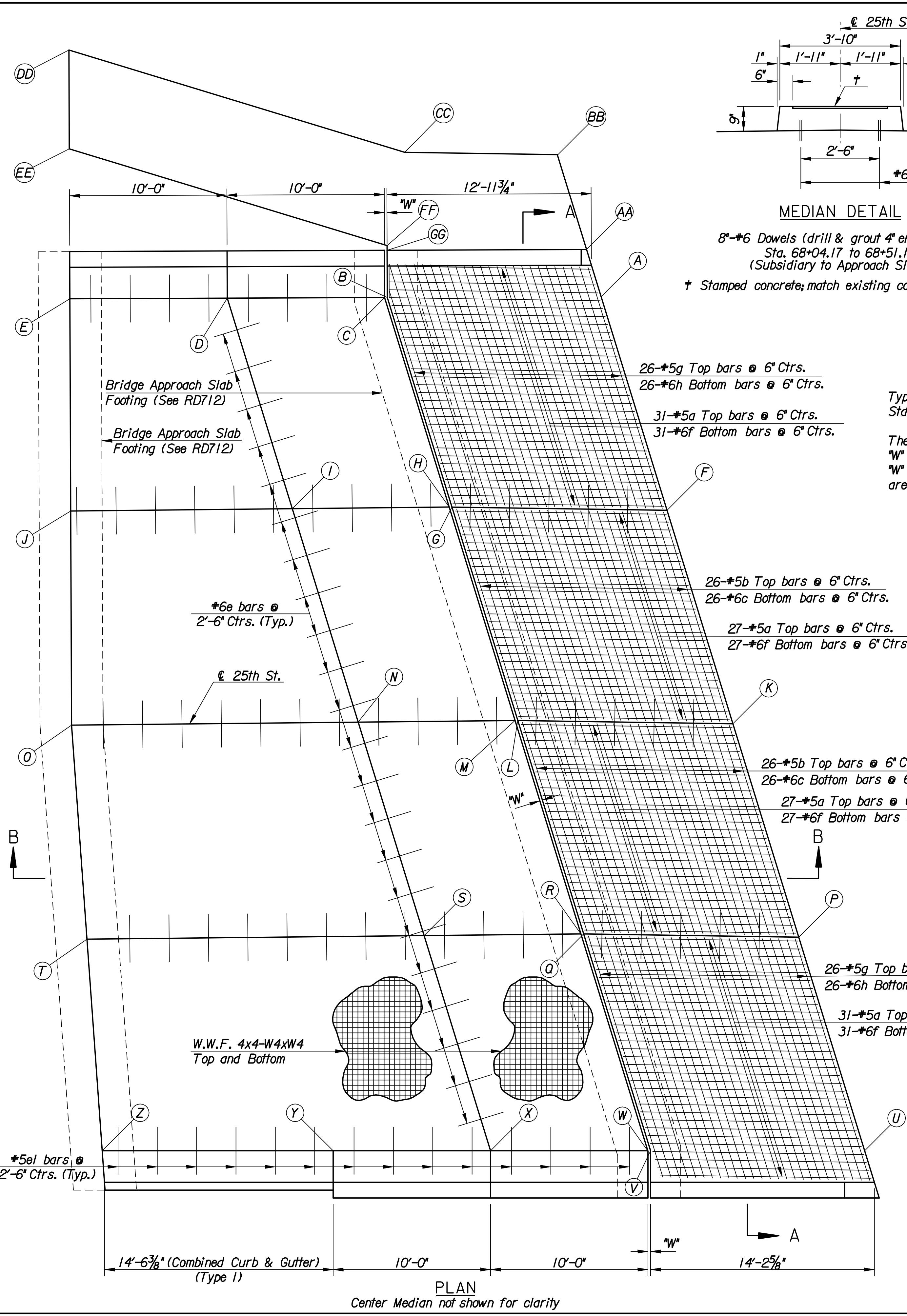
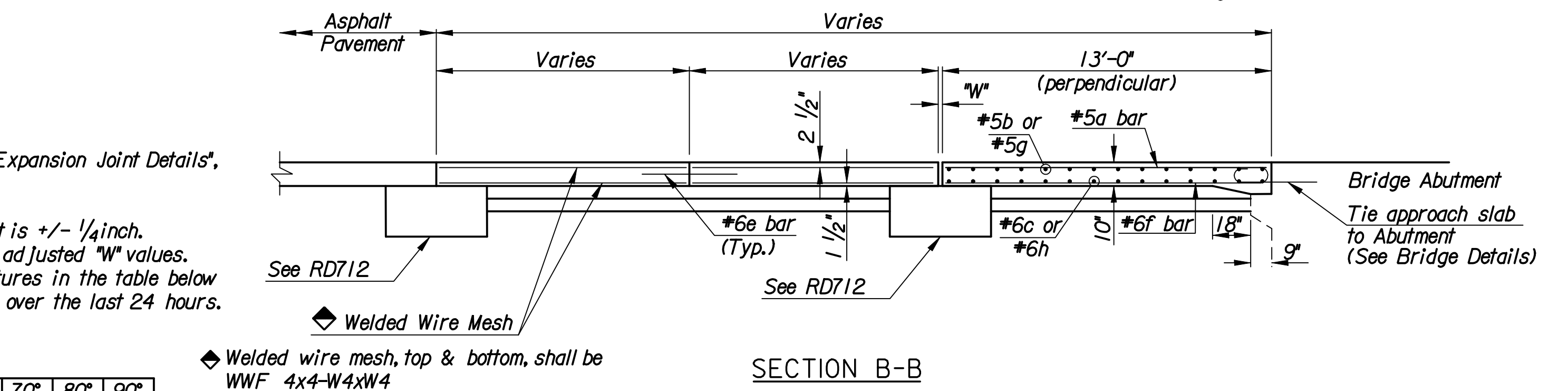
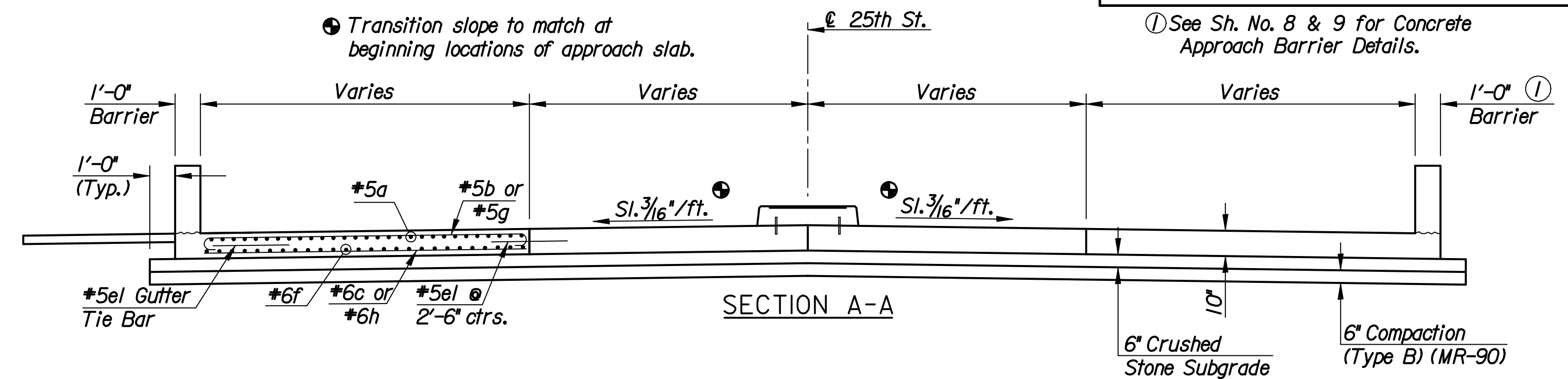


① See Sh. No. 8 & 9 for Concrete Approach Barrier Details.



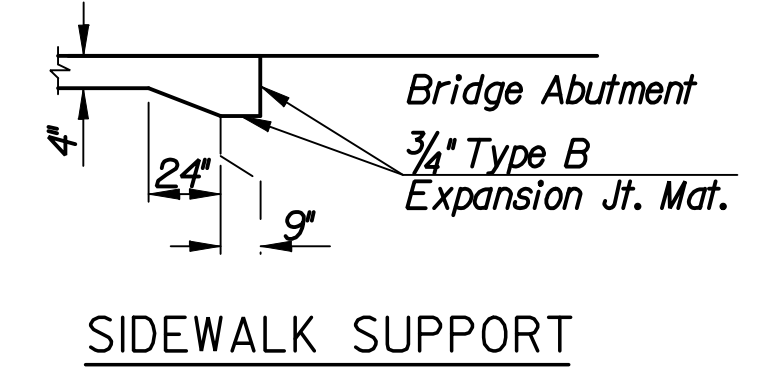
**MEDIAN DETAIL**  
 8" #6 Dowels (drill & grout 4" embedment)  
 Sta. 68+04.17 to 68+51.19  
 (Subsidiary to Approach Slabs)  
 † Stamped concrete; match existing color and pattern



Type C Expansion Joint only; (See "Expansion Joint Details", Std. No. RD712).

The thermal movement at the abutment is +/- 1/4 inch.  
 "W" = 2 inches; See table below for adjusted "W" values.  
 "W" is the formed gap. The temperatures in the table below are the average ambient temperature over the last 24 hours.

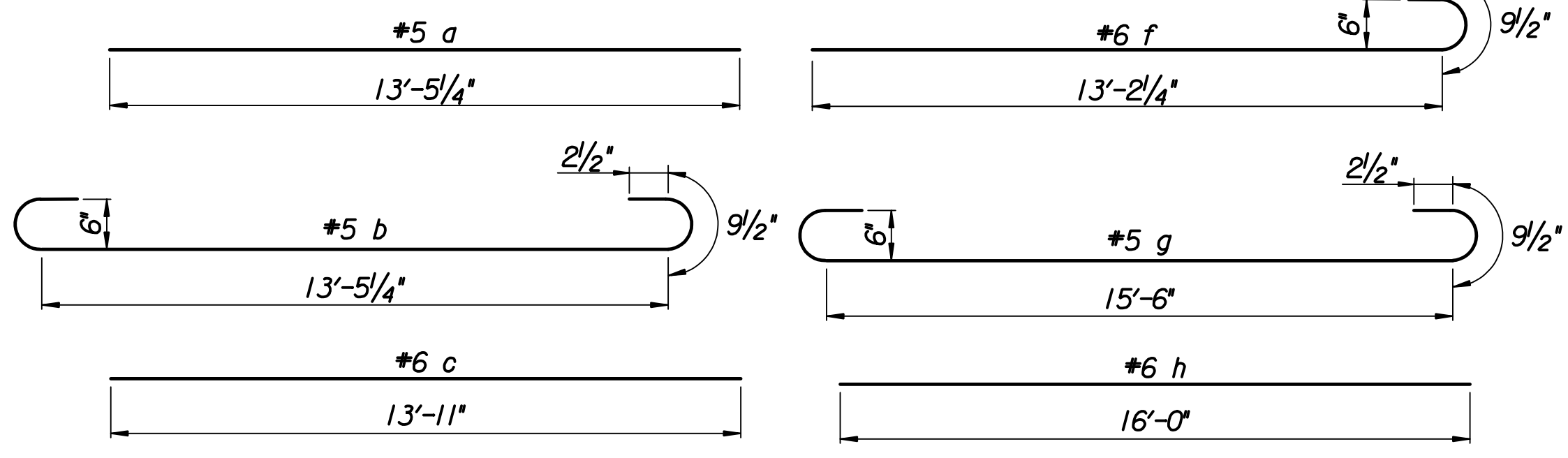
Temp. (F°)	30°	40°	50°	60°	70°	80°	90°
"W", (in.)	2 1/4"	2 1/8"	2 1/8"	2"	1 7/8"	1 7/8"	1 3/4"



BAR LIST (ONE END)			
BAR	NO.	SIZE	LENGTH
a	116	#5	13'-5 1/4"
b	52	#5	15'-5 1/4"
c	52	#6	13'-11"
e	22	#6	3'-0"
el	70	#5	3'-0"
f	116	#6	14'-2 3/4"
g	52	#5	17'-6"
h	52	#6	16'-0"

BILL OF MATERIALS (ONE END)		
Item	Quantity	Unit
Reinforcing Steel (Grade 60)	8546	Lbs.
Concrete Pavement (10" Unif.)(AE)	258.4	S.Y.

Note:  
 Quantities listed are for one approach slab only.  
 The reinforcing steel weight is shown for information only and does not include the welded wire mesh.



**BENDING DIAGRAMS**

Note: All dimensions are out to out of bars, unless otherwise noted

TABLE OF COORDINATES		
LOCATION	NORTH COORDINATE	EAST COORDINATE
AA	20056.1404	18108.7690
BB	20062.1480	18106.8431
CC	20062.1861	18097.1469
DD	20068.4488	18075.7404
EE	20062.1698	18075.8345
FF	20056.2431	18096.0923
GG	20055.9444	18096.0968

TABLE OF COORDINATES		
LOCATION	NORTH COORDINATE	EAST COORDINATE
A	20053.1485	18109.7282
B	20052.9448	18096.1418
C	20052.9423	18095.9751
D	20052.7923	18085.9763
E	20052.6424	18075.9774
F	20039.6207	18114.0650
G	20039.6743	18100.3961
H	20039.6750	18100.2208
I	20039.4594	18090.2537
J	20039.1550	18076.1796
K	20026.1036	18118.3983
L	20026.1572	18104.7294
M	20026.1579	18104.5542

TABLE OF COORDINATES		
LOCATION	NORTH COORDINATE	EAST COORDINATE
N	20025.9424	18094.5901
O	20025.5486	18076.3837
P	20012.5865	18122.7317
Q	20012.6402	18109.0628
R	20012.6408	18108.8875
S	20012.4254	18098.9266
T	20011.9621	18077.5114
U	19999.0587	18127.0685
V	19998.9090	18113.4648
W	19998.9071	18113.2903
X	19998.7972	18103.2987
Y	19998.6873	18093.2993
Z	19998.5259	18078.6267

**GENERAL NOTES**

Special Concrete Bridge Approach shall be paid for as Sq.Yds. of "Concrete Pavement (10" Uniform)(AE)" and includes all work and materials required to construct the approach slab shown on this sheet. All concrete shall be Concrete Grade (4.0)(AE).

drawn by: msn  
 plotted by: msn 9-3-2008  
 7:2006/06008/1/101/09\_02\_2008/06008-000-WestAppSlab.dgn

No.	Revisions	By	Date
CITY OF WICHITA BR. NO. 530400870LAR100 STA. 69+55.00 <b>SPECIAL CONCRETE WEST APPROACH PAVEMENT</b> <b>25TH STREET OVER LAR</b> PROJECT NO. 472-84595 SEDGWICK COUNTY			
<b>Professional Engineering Consultants, P.A.</b> 303 S. TOPEKA • WICHITA, KANSAS 67202 316-262-2691 • FAX 316-262-3003			
Designed by	M.S.N.	Checked by	R.A.S.
Drawn by	M.S.N.	Date	Apr 11 2008 Job No. 06008