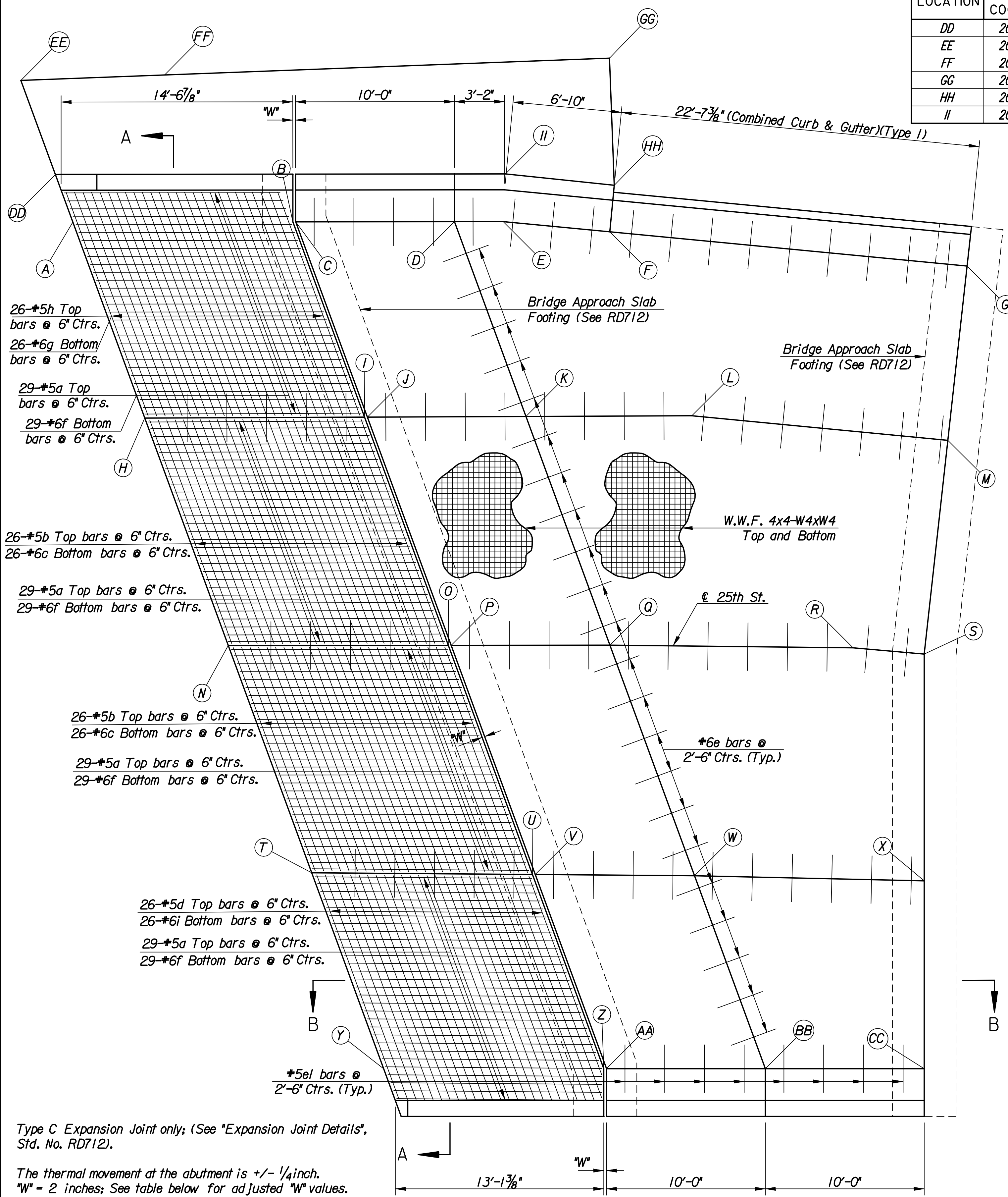


STATE	PROJECT NO.	YEAR	SHEET NO.	TOTAL SHEETS
KANSAS	472-84595	2008	7	43
KDOT PROJECT NO. 87 N-0360-01				

LOCATION	NORTH COORDINATE	EAST COORDINATE
DD	20055.3250	18316.3961
EE	20061.3327	18314.4701
FF	20061.2971	18323.5165
GG	20061.1871	18351.5327
HH	20053.1849	18351.5013
II	20054.1844	18344.6868

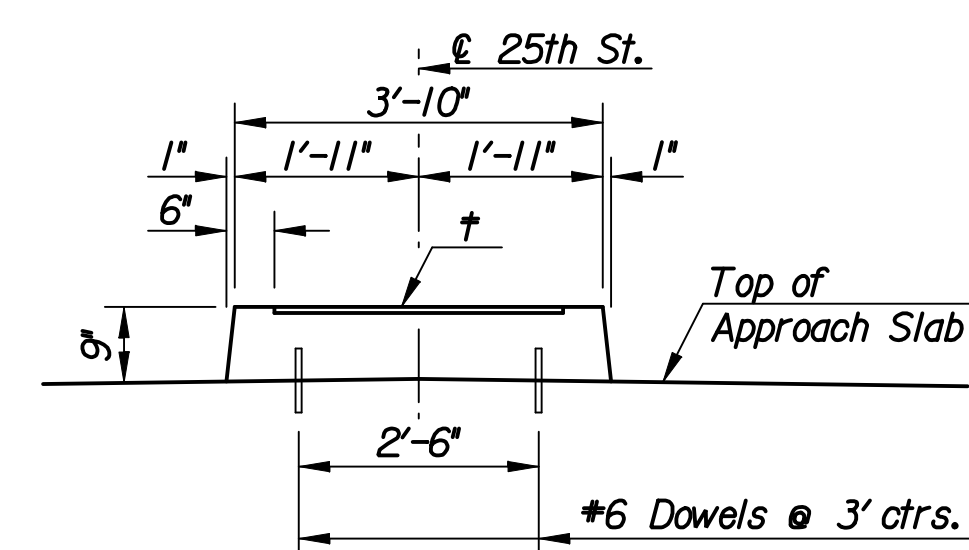
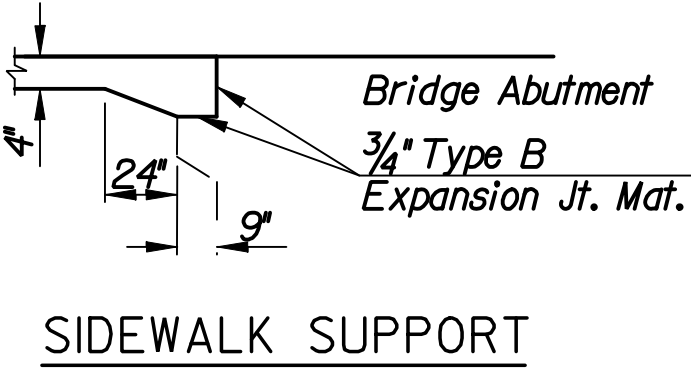
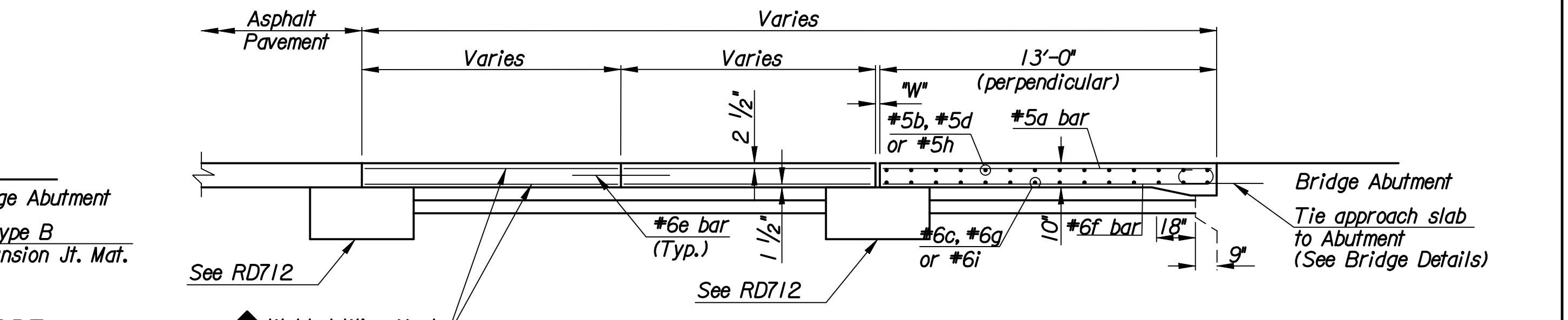
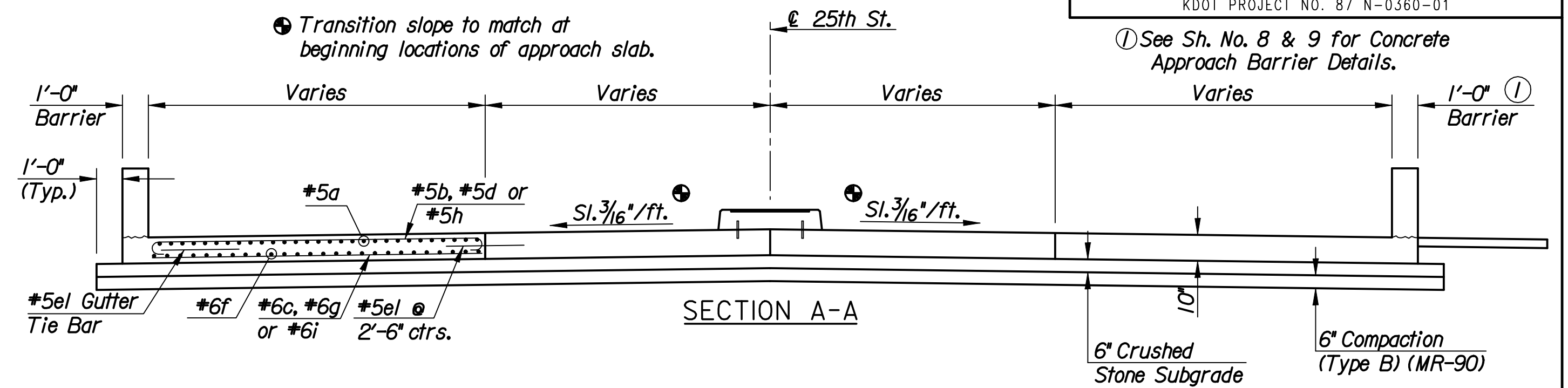


Type C Expansion Joint only; (See "Expansion Joint Details", Std. No. RD712).

The thermal movement at the abutment is +/- 1/4 inch.
 "W" = 2 inches; See table below for adjusted "W" values.
 "W" is the formed gap. The temperatures in the table below are the average ambient temperature over the last 24 hours.

Temp. (F°)	30°	40°	50°	60°	70°	80°	90°
"W", (in.)	2 1/4"	2 1/8"	2 1/8"	2"	1 7/8"	1 7/8"	1 3/4"

PLAN
Center Median not shown for clarity



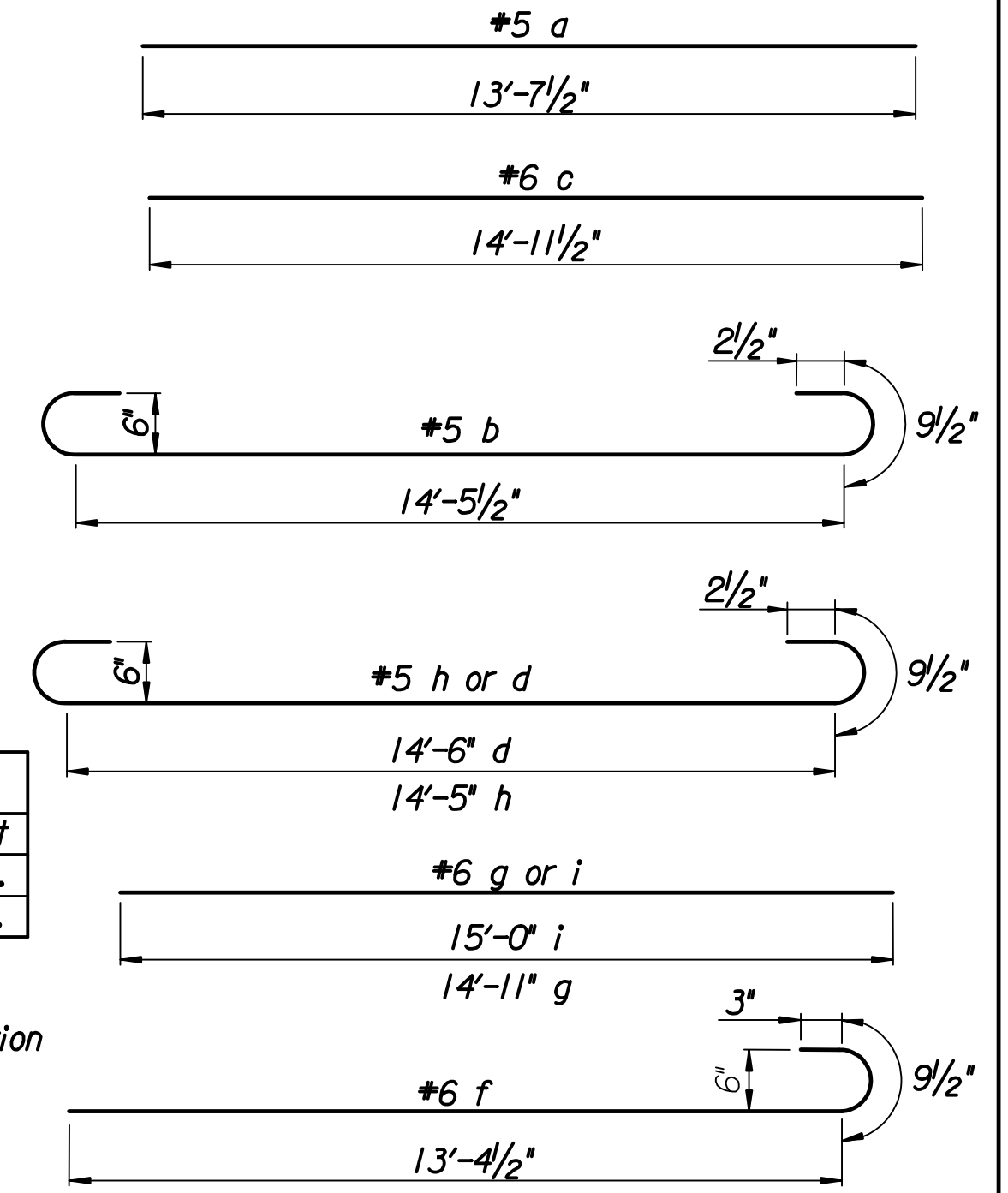
8-#6 Dowels (drill & grout 4" embedment)
 Sta. 70+58.82 to 71+07.62
 (Subsidiary to Approach Slabs)

† Stamped concrete; match existing color and pattern

BAR	NO.	SIZE	LENGTH
a	116	#5	13'-7 1/2"
b	52	#5	16'-5 1/2"
c	52	#6	14'-11 1/2"
d	26	#5	16'-0"
e	22	#6	3'-0"
e1	77	#5	3'-0"
f	116	#6	14'-5"
g	26	#6	14'-11"
h	26	#5	16'-5"
i	26	#6	15'-0"

Item	Quantity	Unit
Reinforcing Steel (Grade 60)	8622	Lbs.
Concrete Pavement (10' Unif.)(AE)	267.2	S.Y.

Note:
 Quantities listed are for one approach slab only.
 The reinforcing steel weight is shown for information only and does not include the welded wire mesh.



GENERAL NOTES

Special Concrete Bridge Approach shall be paid for as Sq.Yds. of "Concrete Pavement (10' Uniform)(AE)" and includes all work and materials required to construct the approach slab shown on this sheet. All concrete shall be Concrete Grade (4.0)(AE).

BENDING DIAGRAMS

Note: All dimensions are out to out of bars, unless otherwise noted

LOCATION	NORTH COORDINATE	EAST COORDINATE
A	20052.2956	18317.3673
B	20051.7317	18331.1997
C	20051.7245	18331.3771
D	20051.3176	18341.3580
E	20051.1928	18344.4200
F	20050.2708	18351.0991
G	20047.1832	18373.4681
H	20039.7926	18321.3755
I	20039.2728	18335.1938
J	20039.2662	18335.3710
K	20038.8912	18345.3408
L	20038.4989	18355.7701
M	20036.2860	18371.8018
N	20025.2804	18326.0279
O	20024.7137	18339.8613

LOCATION	NORTH COORDINATE	EAST COORDINATE
P	20024.7064	18340.0386
Q	20024.2976	18350.0183
R	20023.4946	18365.3011
S	20022.9173	18369.7577
T	20010.7818	18330.6759
U	20010.0947	18344.5479
V	20010.0859	18344.7257
W	20009.5903	18354.7323
X	20008.6684	18369.1629
Y	19998.2791	18334.6841
Z	19997.7016	18348.5209
AA	19997.6946	18348.6874
BB	19997.2776	18358.6787
CC	19996.8605	18368.6700

No.	Revisions	By	Date
CITY OF WICHITA BR. NO. 530400870LAR100 STA. 69+55.00 SPECIAL CONCRETE EAST APPROACH PAVEMENT 25TH STREET OVER LAR PROJECT NO. 472-84595 SEDGWICK COUNTY			
Professional Engineering Consultants, P.A. 303 S. TOPEKA • WICHITA, KANSAS 67202 316-262-2691 • FAX 316-262-3003			
Designed by	M.S.N.	Checked by	R.A.S.
Drawn by	M.S.N.	Date	April 2008
		Job No.	06008

drawn by: msn
 plotted by: msn 9-3-2008
 7:2006/06008/1/09_02_2008/06008-000-EastApproachSlab.dgn