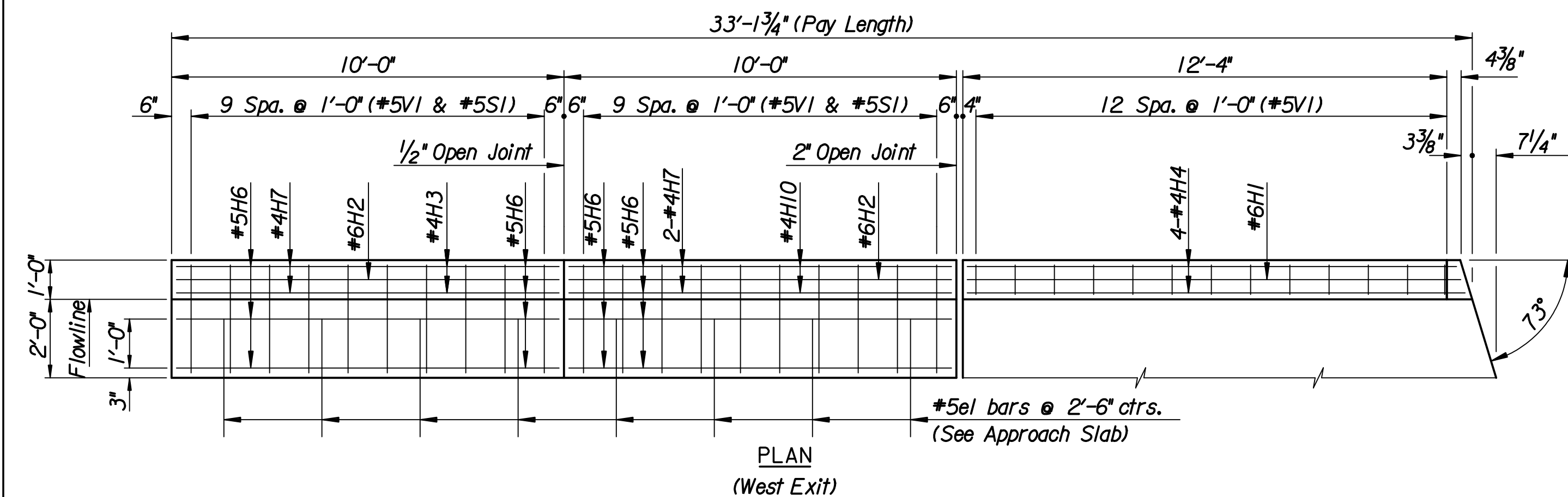
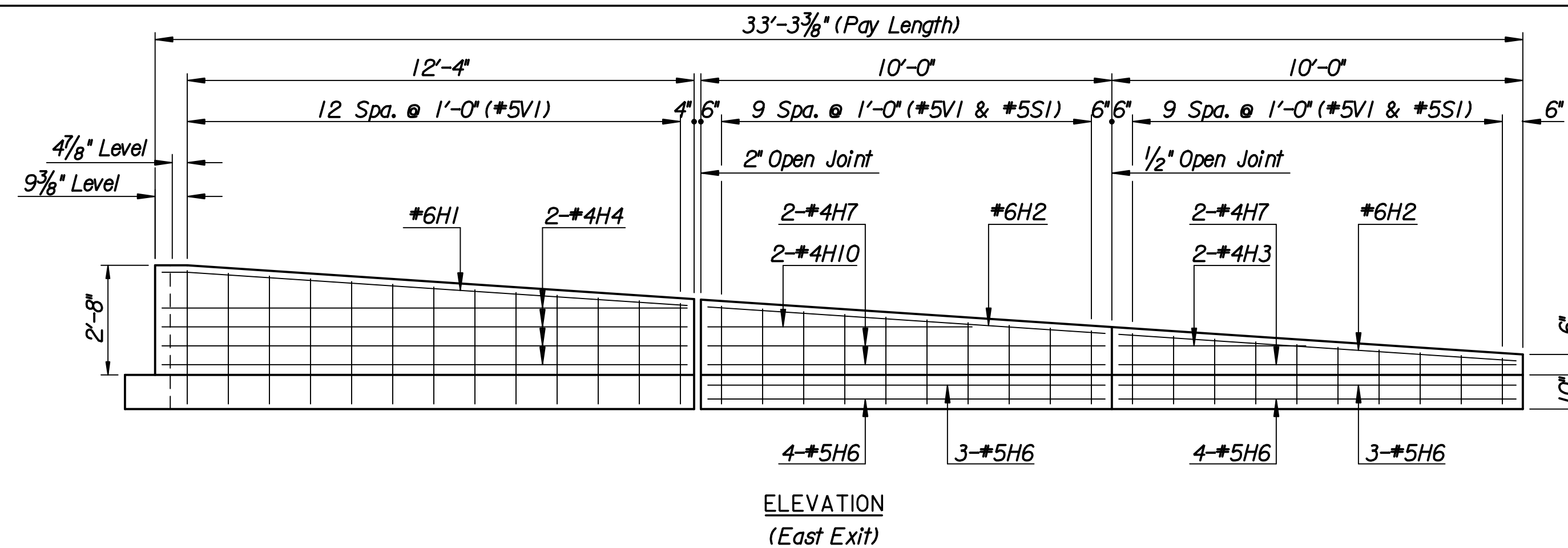


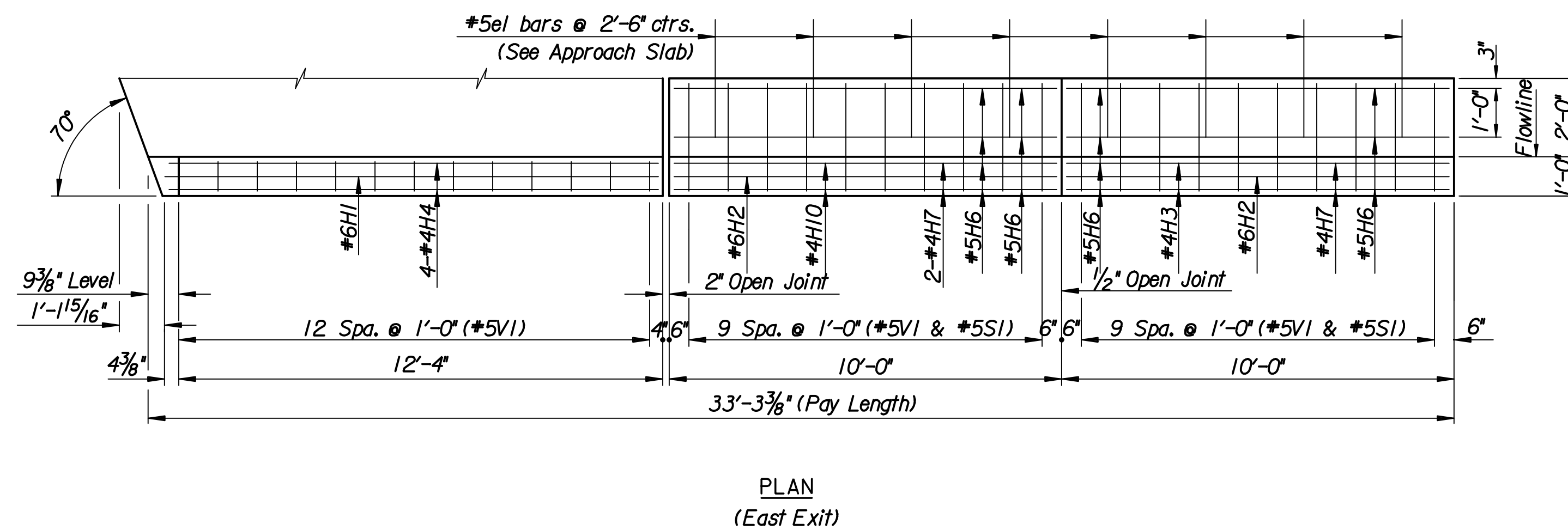
ELEVATION
(West Exit)



PLAN
(West Exit)



ELEVATION
(East Exit)



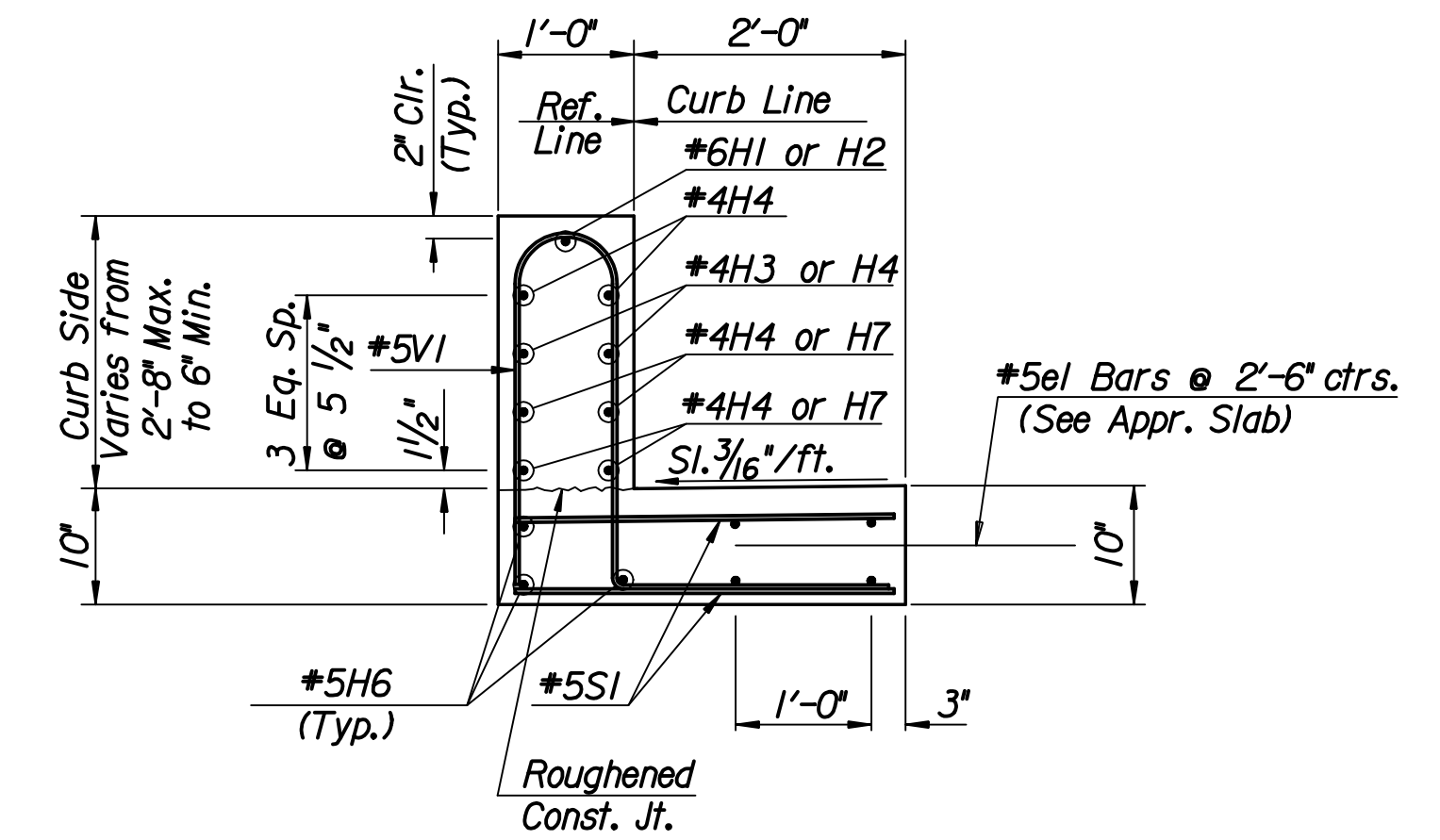
PLAN
(East Exit)

BILL OF MATERIALS (WEST EXIT) REINFORCING STEEL							
Mark	No.	Size	Length	Mark	No.	Size	Length
H1	1	6	12'-7"	H6	14	5	9'-8"
H2	2	6	9'-8"	H7	6	4	9'-8"
H3	2	4	4'-5"	H10	2	4	6'-5"
H4	8	4	12'-6"				
SI	40	5	2'-8"				
VI	33	5	Varies				

* SUMMARY OF QUANTITIES

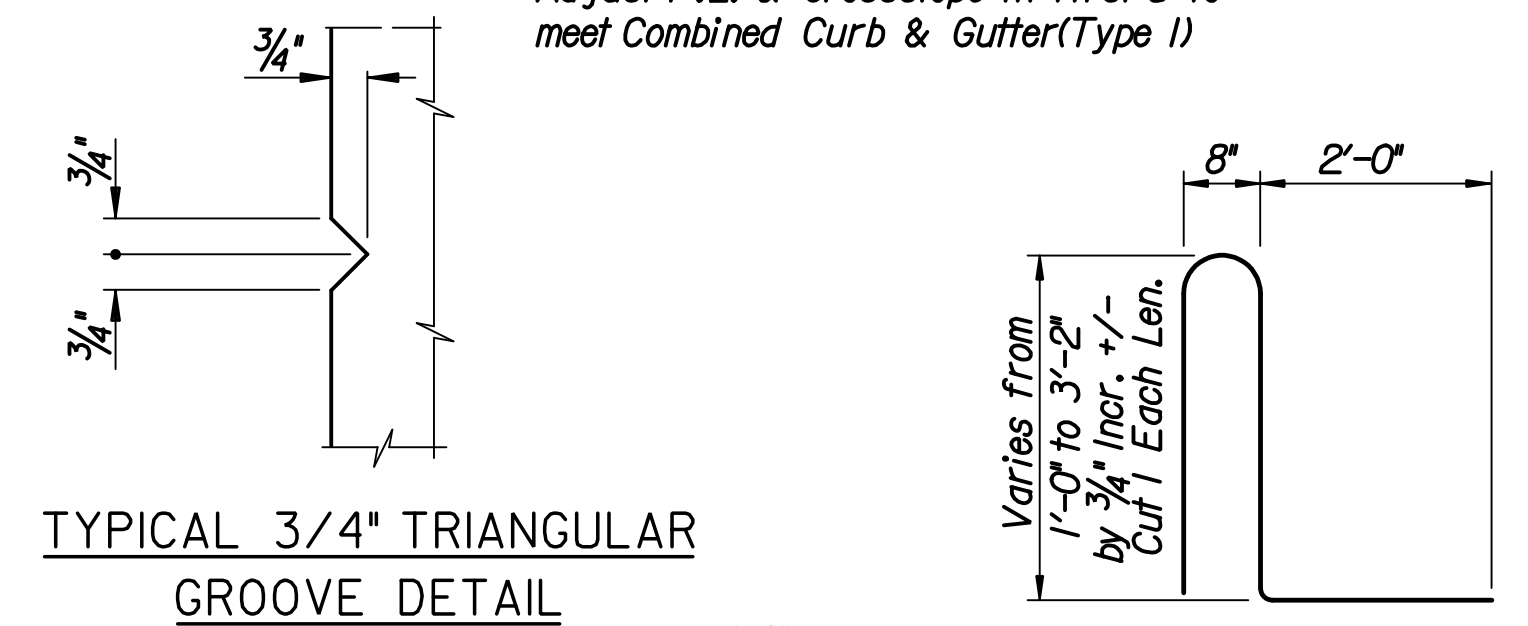
Item	Quantity	Unit
Concrete Grade (4.0)(AE)	3.79	C.Y.
Reinforcing Steel (Gr. 60)	651	Lbs.

* For Information Only

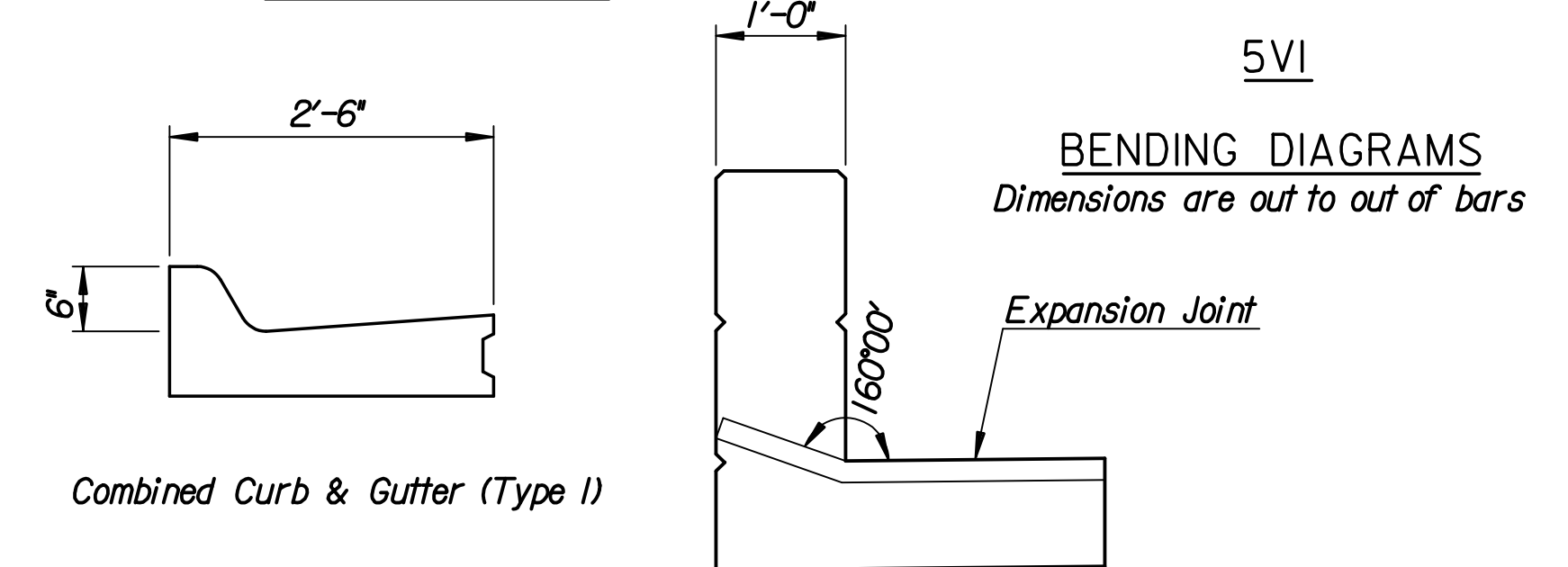


SECTION THRU SAFETY BARRIER
(TRANSITION)

Adjust F.L. & crossslope in first 5' to meet Combined Curb & Gutter (Type I)



TYPICAL 3/4" TRIANGULAR
GROOVE DETAIL



TYPICAL BARRIER JOINT TREATMENT

BILL OF MATERIALS (EAST EXIT) REINFORCING STEEL							
Mark	No.	Size	Length	Mark	No.	Size	Length
H1	1	6	12'-7"	H6	14	5	9'-8"
H2	2	6	9'-8"	H7	6	4	9'-8"
H3	2	4	4'-5"	H10	2	4	6'-5"
H4	8	4	12'-6"				
SI	40	5	2'-8"				
VI	33	5	Varies				

* SUMMARY OF QUANTITIES

Item	Quantity	Unit
Concrete Grade (4.0)(AE)	3.80	C.Y.
Reinforcing Steel (Gr. 60)	651	Lbs.

* For Information Only

CONCRETE SAFETY BARRIER (SPECIAL) (AE) NOTES

The "Concrete Safety Barrier (Special)(AE)" shall be constructed of Concrete Grade (4.0)(AE) and A-615 Grade 60 reinforcing steel.

The 2'-8" sections of the barrier shall be grooved with a 3/4" chamfer strip on all exposed edges.

The bid item "Concrete Safety Barrier (Special) (AE)" measured per lineal foot as per plan, shall be full compensation for furnishing all materials, equipment and labor necessary.

No.	Revisions	By	Date
1			

CITY OF WICHITA
BR. NO. 530400870LAR100 STA. 69+55.00
CONCRETE SAFETY BARRIER
(SPECIAL) (AE) (EXIT END)
25TH STREET OVER LAR
PROJECT NO. 472-84595 SEDGWICK COUNTY

Professional Engineering Consultants, P.A.
303 S. TOPKA • WICHITA, KANSAS 67202
316-262-2691 • FAX 316-262-3003

Designed by M.S.N. Checked by R.A.S.
Drawn by M.S.N. Date Apr 11 2008 Job No. 06008