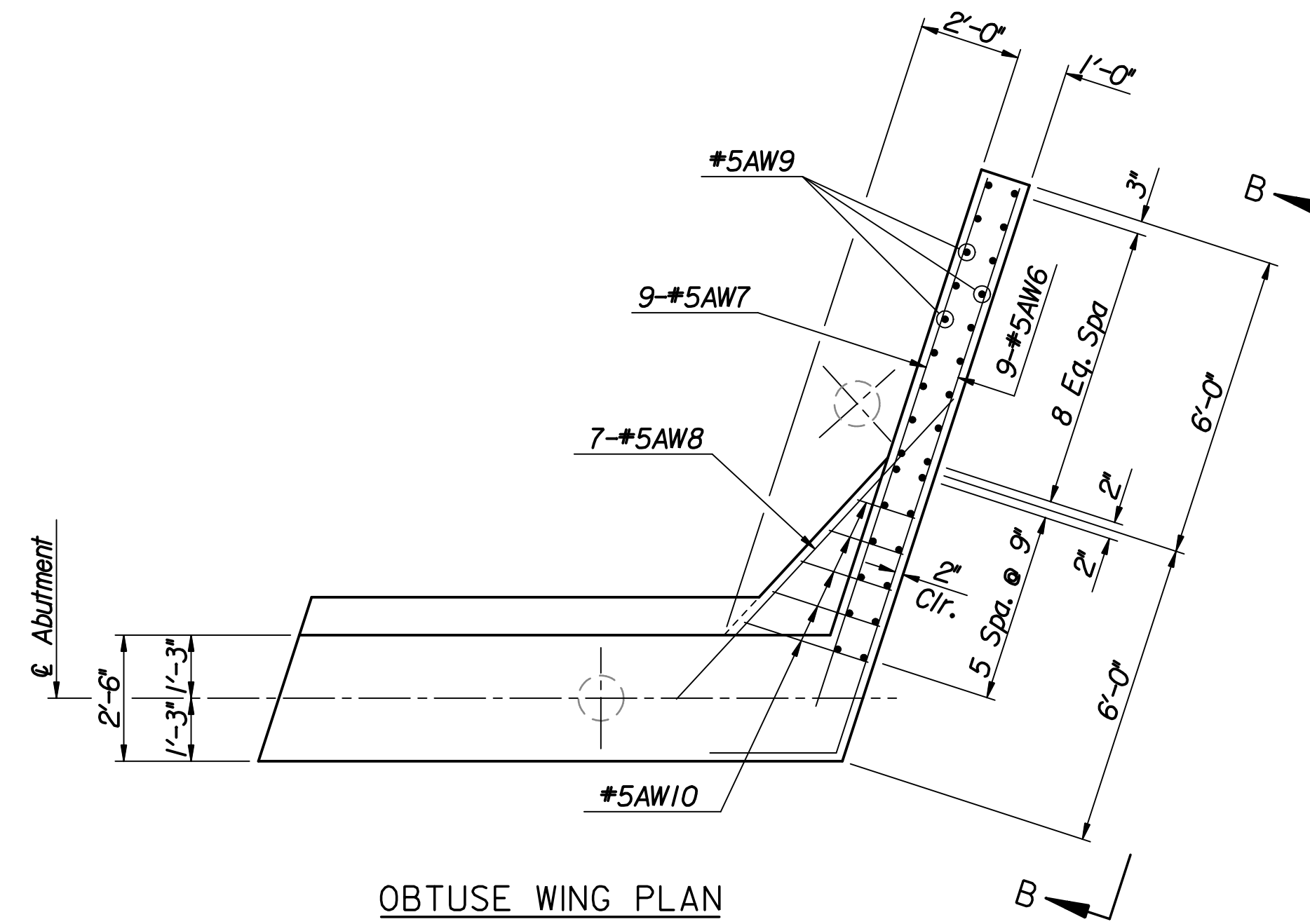
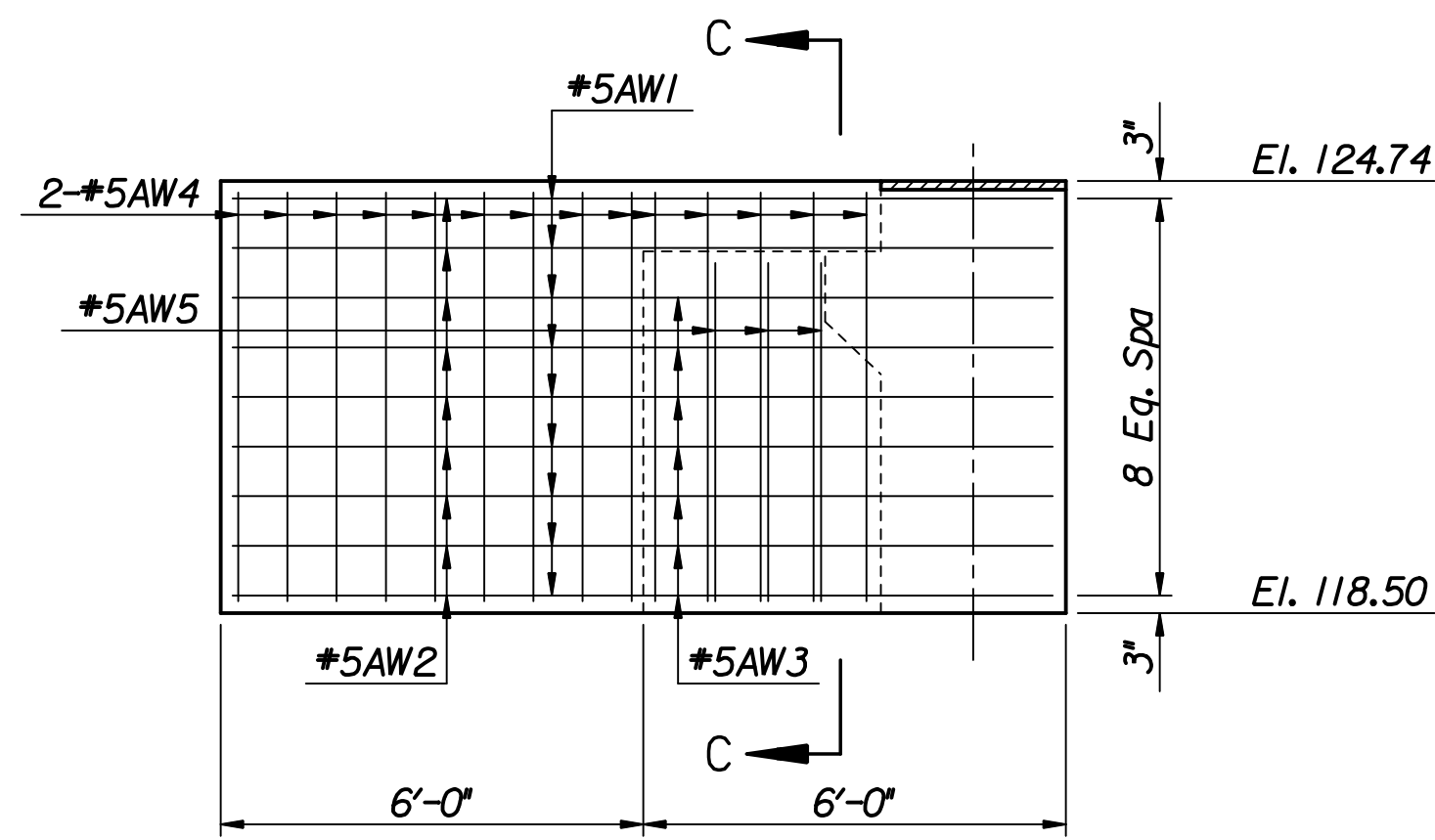


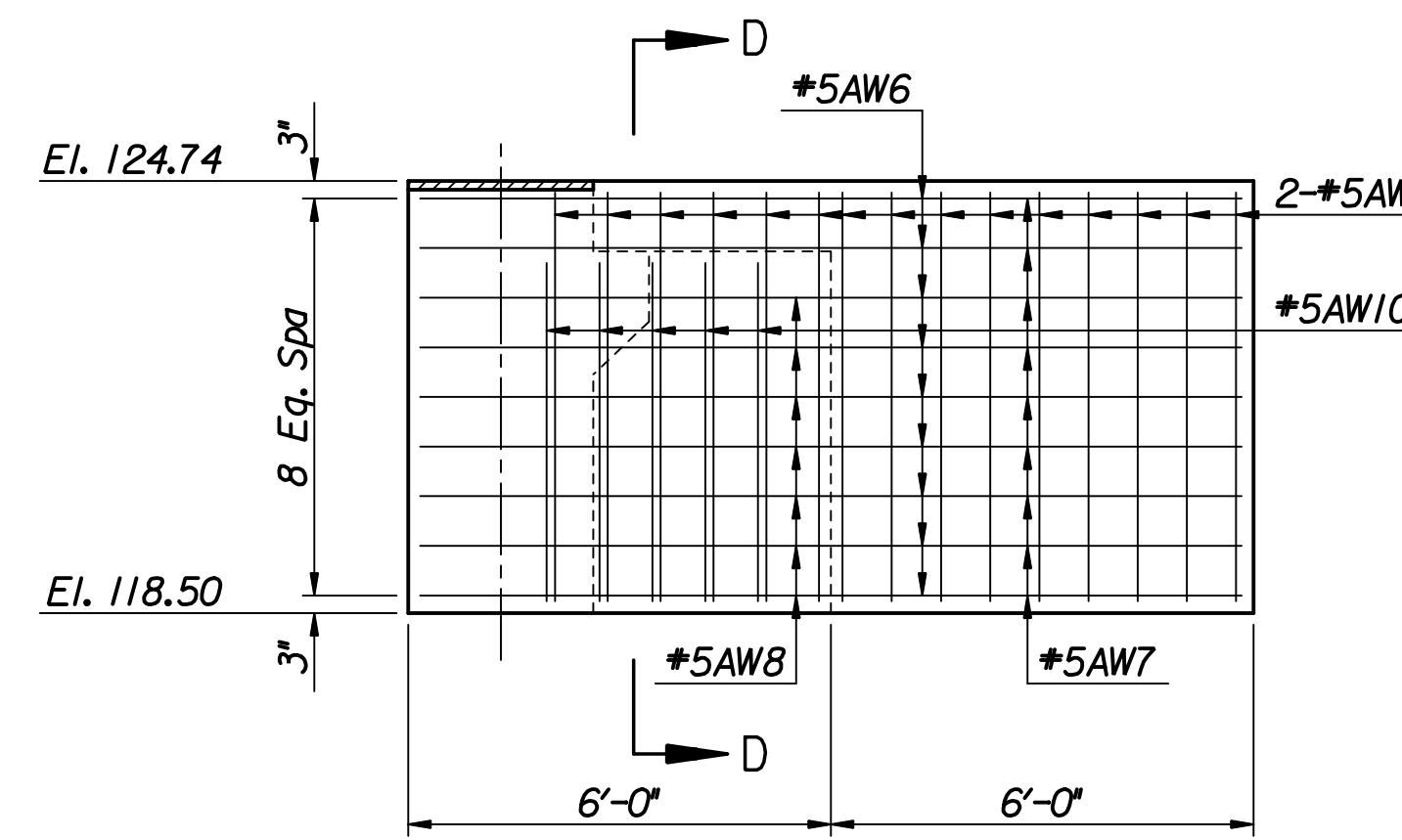
ACUTE WING PLAN



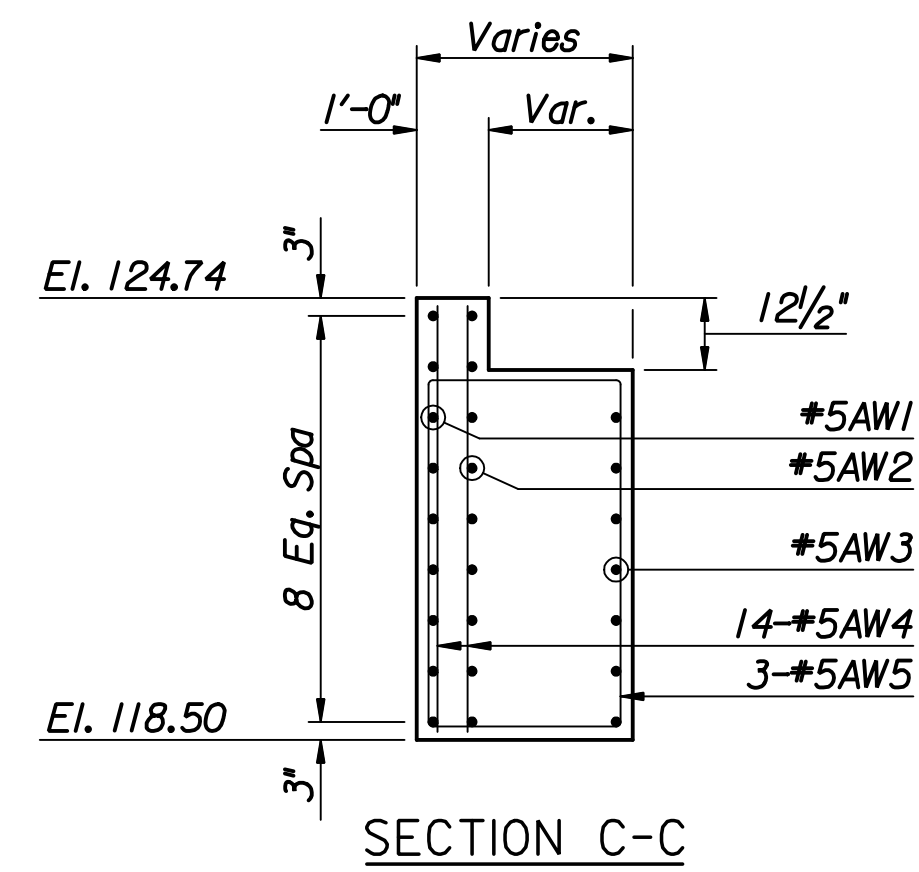
OBTUSE WING PLAN



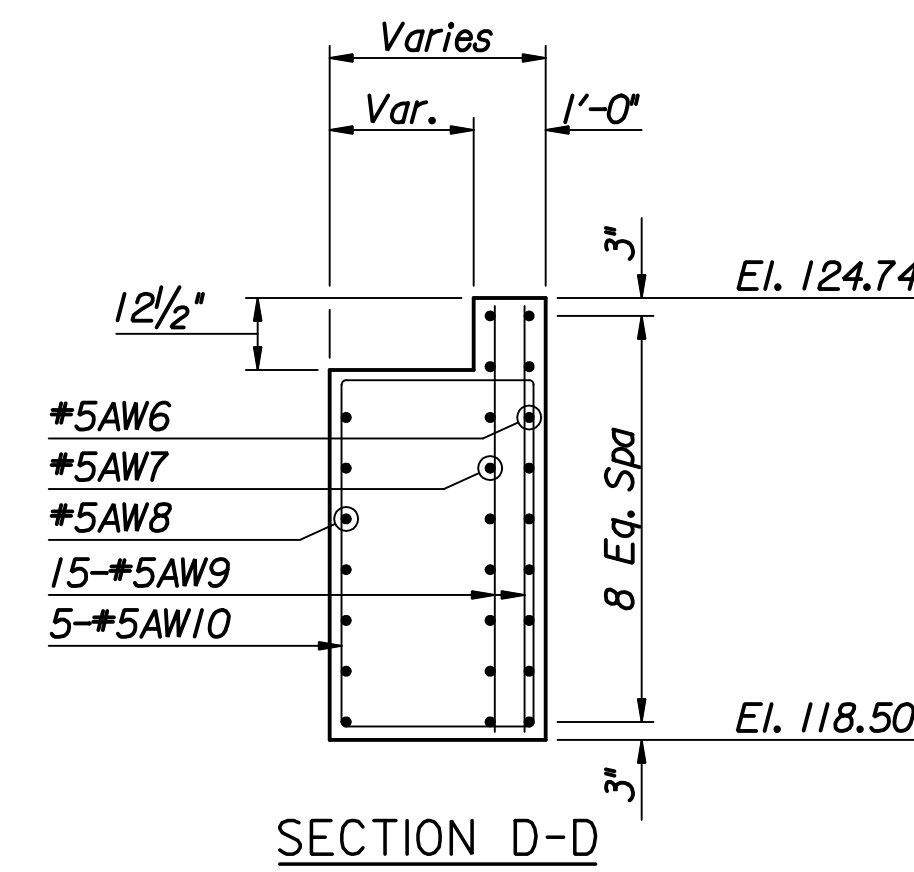
VIEW A-A



VIEW B-B



SECTION C-C



SECTION D-D

Plotted by : msn 9-3-2008  
 Drawn by : will  
 I:/2006/06008/fin/09\_02\_2008/06008-000-Abutment-Widening.dgn

No.	Revisions	By	Date
<b>CITY OF WICHITA</b> BR. NO. 530400870LAR100 STA. 69+55.00 <b>PROPOSED ABUTMENT DETAILS</b> 25TH STREET OVER LAR PROJECT NO. 472-84595 SEDGWICK COUNTY			
<b>Professional Engineering Consultants, P.A.</b> 303 S. TOPEKA • WICHITA, KANSAS 67202 316-262-2691 • FAX 316-262-3003			
Designed by	M.S.N.	Checked by	R.A.S.
Drawn by	M.S.N.	Date	Apr 11 2008 Job No. 06008