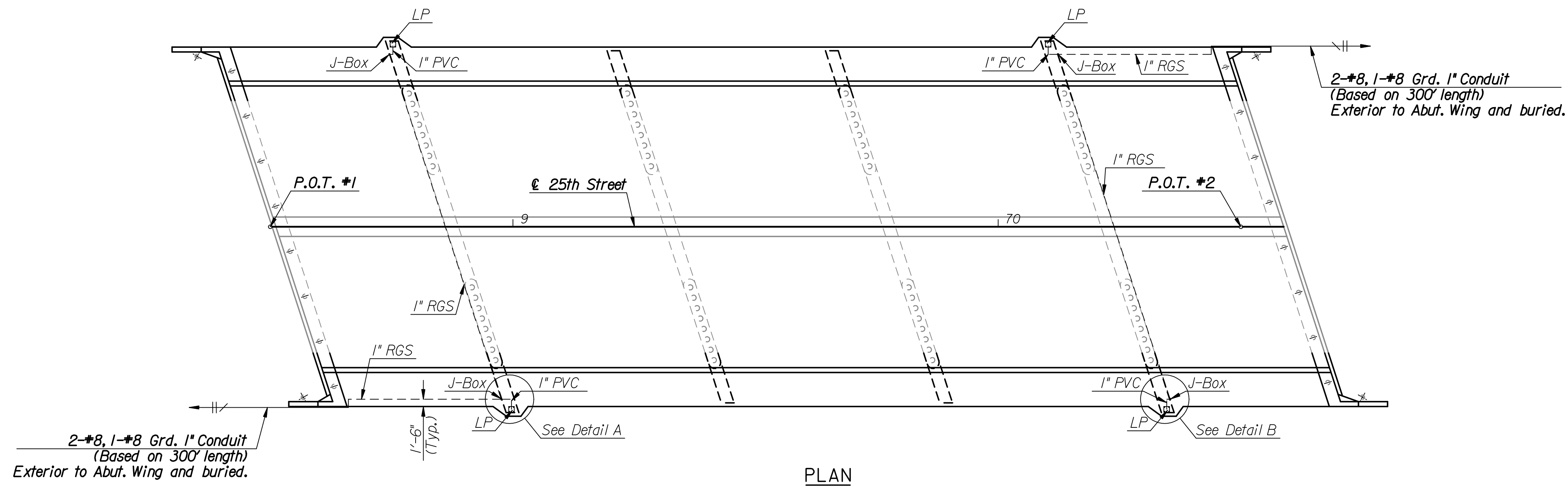
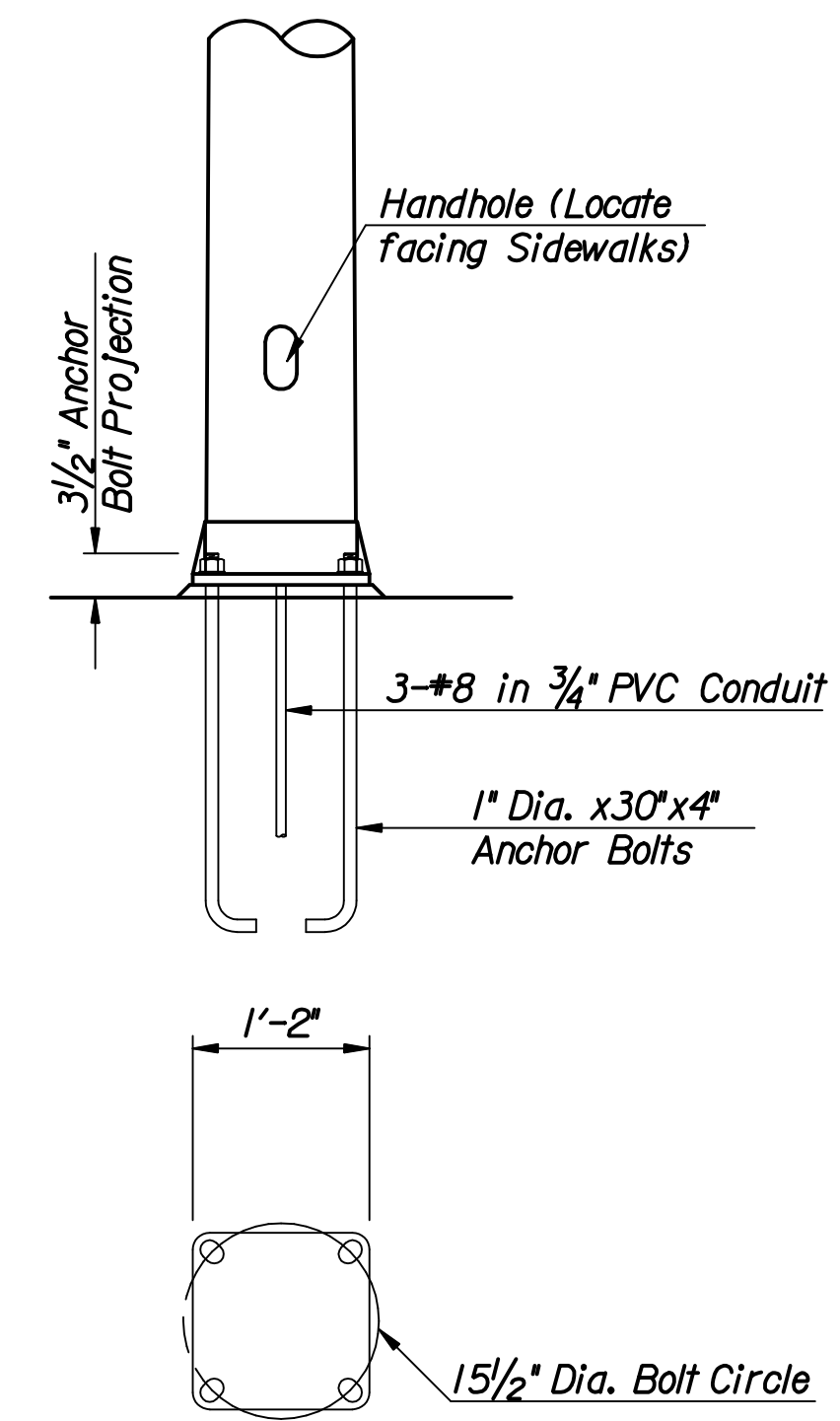


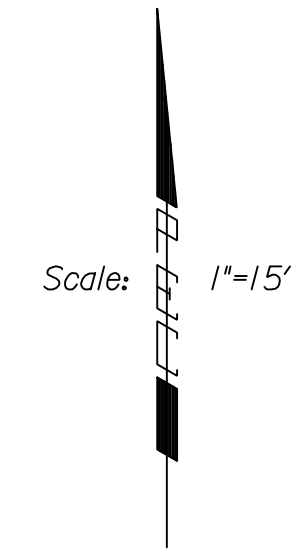
STATE	PROJECT NO.	YEAR	SHEET NO.	TOTAL SHEETS
KANSAS	472-84595	2008	29	43
KDOT PROJECT NO. 87 N-0360-01				



PLAN



LUMINARE BASE DETAIL

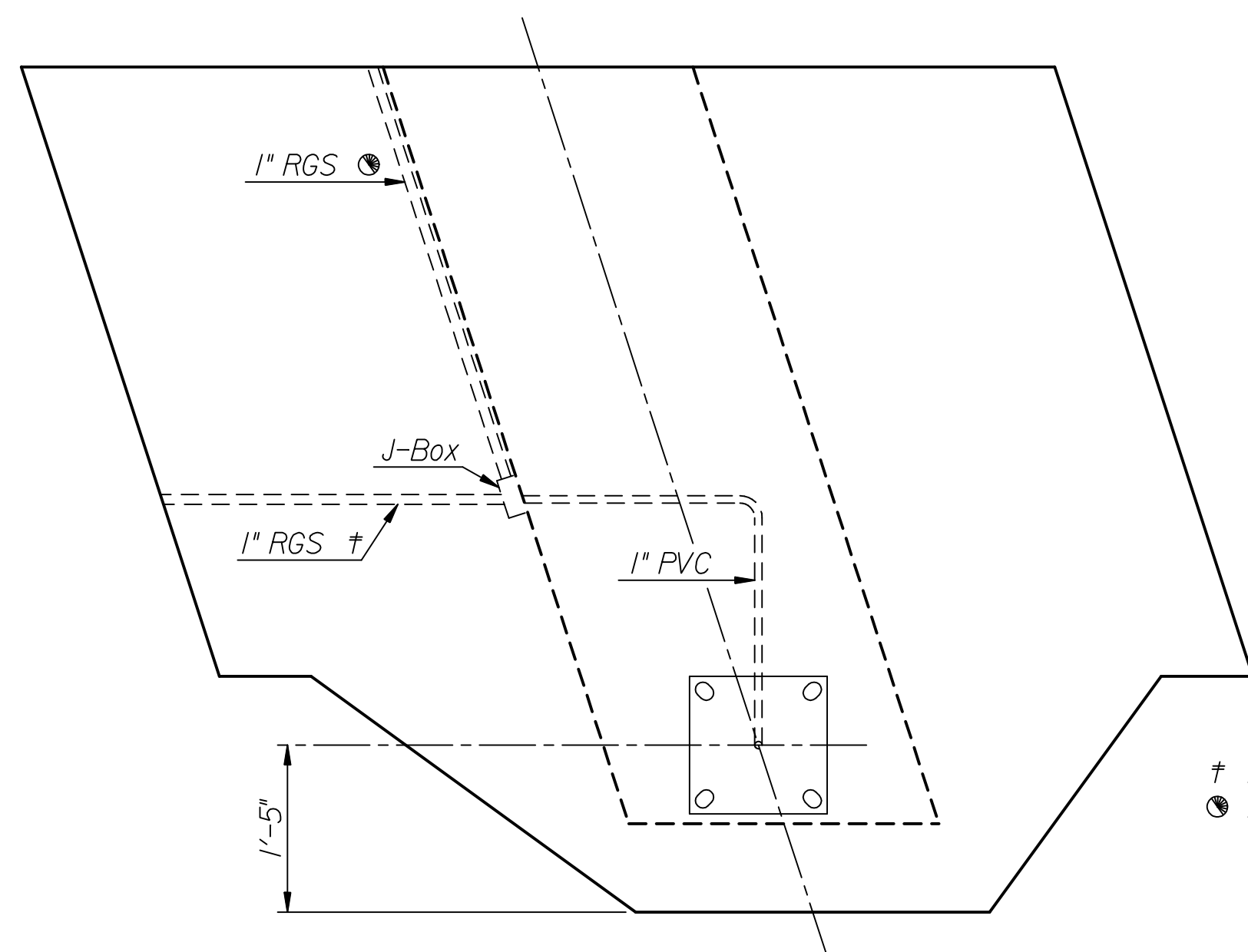


P.O.T. #1 - \mathcal{L} 25th Street
 1. Sta. 68+50.00 (Office Set)
 2. N. 20026.1070 E. 18117.2131

P.O.T. #2 - \mathcal{L} 25th Street
 1. Sta. 70+50.00 (Office Set)
 2. N. 20025.3216 E. 18317.2115

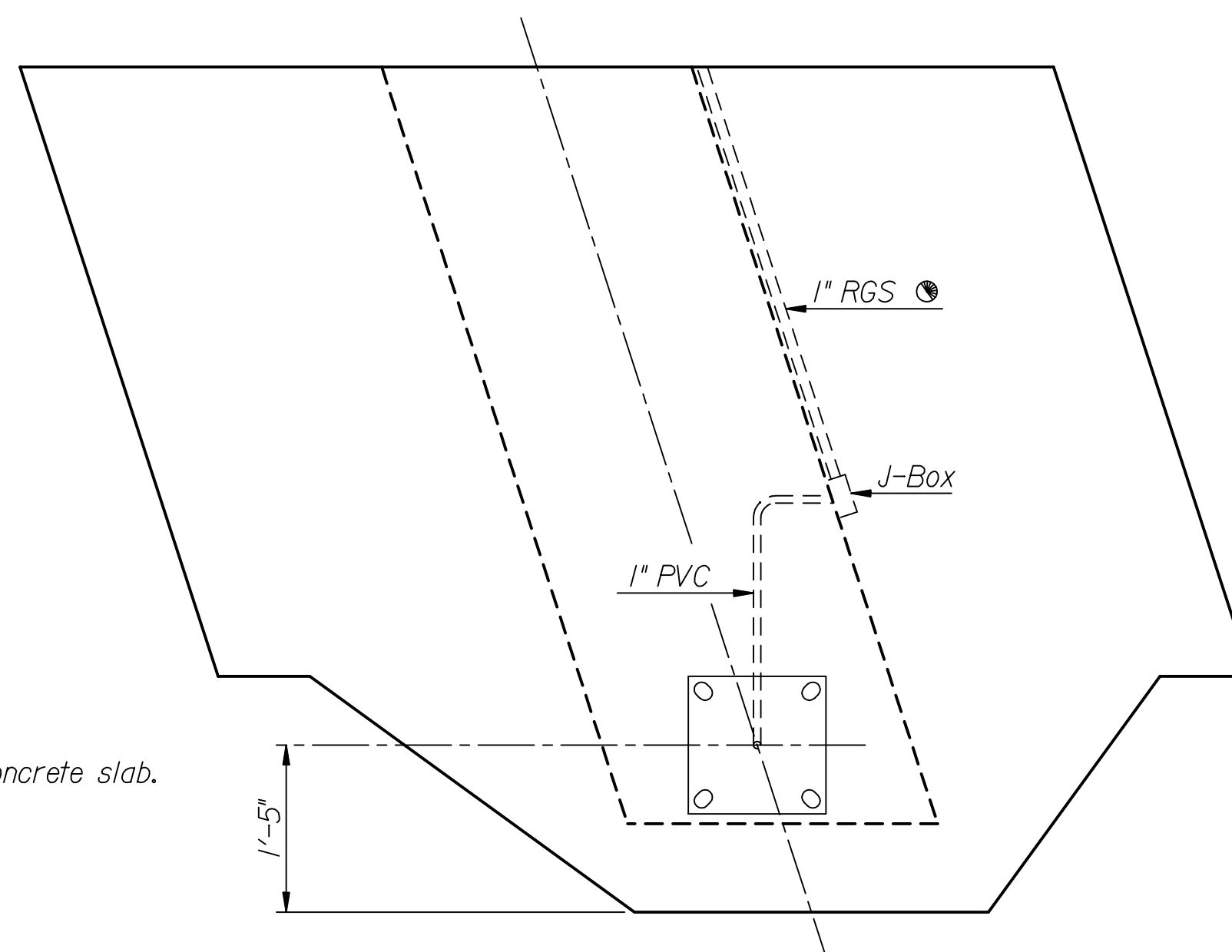
E. 1/4 Sec. Cor. Sec. 6, T27S R1E
 1. N. 20000.0000 E. 20000.0000

Ctr. Sec. 6, T27S R1E
 1. No Monument Set or Found
 2. Intersection of \mathcal{L} Amidon and \mathcal{L} 25th
 3. N. 20000.0000 E. 17358.5900



DETAIL A

† Attach to underside of concrete slab.
 ● Attach to face of pier.



DETAIL B

Notes:
 Contractor to provide and install Conduit, Electrical Wiring and Junction Boxes for the Bridge Lighting Fixtures.
 Contractor to obtain, from Westar, and install anchor bolts for the Bridge Lighting Fixtures.
 Westar to provide and install Light Poles and complete electrical connections for the Bridge Lighting Fixtures.

No.	Revisions	By	Date
CITY OF WICHITA			
BR. NO. 530400870LAR100		STA. 69+55.00	
ELECTRICAL LAYOUT 25TH STREET OVER LAR			
PROJECT NO. 472-84595		SEDGWICK COUNTY	
Professional Engineering Consultants, P.A. 303 S. TOPEKA • WICHITA, KANSAS 67202 316-262-2691 • FAX 316-262-3003			
Designed by	M.S.N.	Checked by	R.A.S.
Drawn by	M.S.N.	Date	Apr 11 2008 Job No. 06008

Plotted by : msn 9-3-2008
 Drawn by : will
 I:/2006/06008/fin/09_02_2008/06008-000-Lighting-Layout.dgn