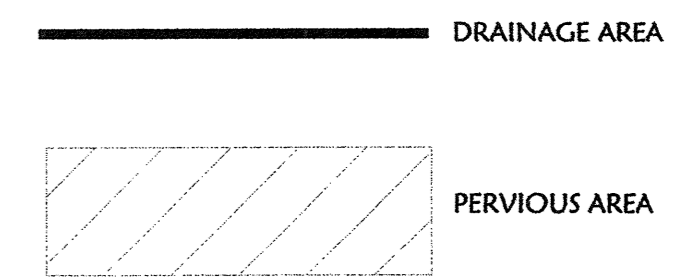
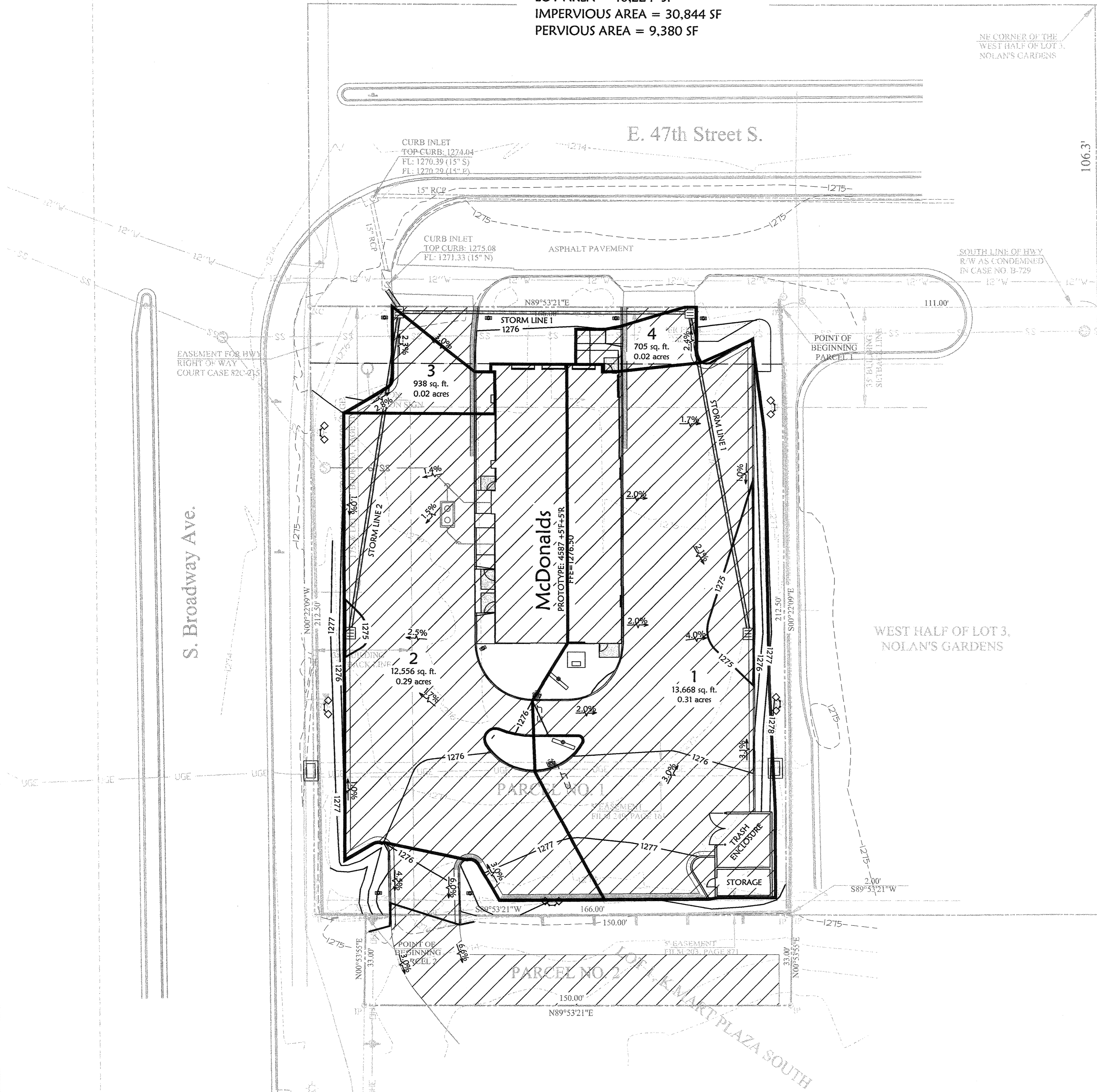
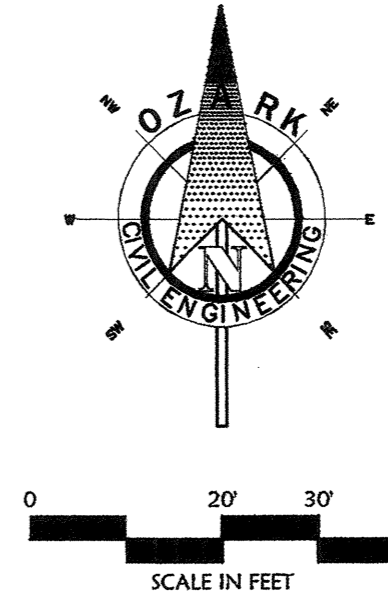


DRAINAGE AREA MAP:
 LOT AREA = 40,224 SF
 IMPERVIOUS AREA = 30,844 SF
 PERVIOUS AREA = 9,380 SF

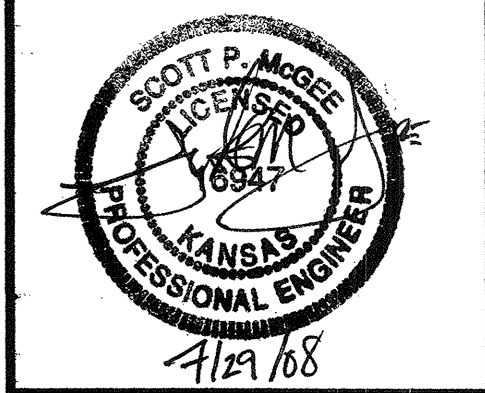


GRADING PROPOSED FEATURES	
	BOUNDARY LINE
	RIGHT OF WAY LINE
	EASEMENT LINE
	CONCRETE CURB AND GUTTER
	FENCE
	GUARD RAIL
	RETAINING WALL
	SANITARY SEWER SERVICE
	WATER SERVICE
	UNDERGROUND ELECTRIC SERVICE
	UNDERGROUND TELEPHONE SERVICE
	OVERHEAD ELECTRIC SERVICE
	OVERHEAD TELEPHONE SERVICE
	FIBER OPTIC CABLE SERVICE
	GAS SERVICE
	GAS SERVICE
	SPOT ELEVATIONS:
	TC - TOP OF CURB
	C - CENTER OF CURB
	TG - TOP OF GRADE (BEHIND TOP OF WALL)
	BG - BOTTOM OF GRADE (AT FRONT OF WALL)
	HP - HIGH POINT
	LP - LOW POINT
	FE - EDGE OF PAVEMENT
	FEI - FLARED END SECTION
	RIP-RAP PAD (SEE EROSION PLANS FOR SIZE)
	SANITARY SEWER MANHOLE
	FIRE HYDRANT WITH GUARD POSTS
	UTILITY POLE
	WATER LINE TEE, BEND, VALVE, AND PLUG

STREET ADDRESS	
4810 S. BROADWAY	
CITY	STATE
WICHITA	USA
COUNTY	REGIONAL DWG. NO
SEDGWICK	015-0046

DRAINAGE MAP		
--------------	--	--

DATE	DESCRIPTION	BY
07/28/08	REVISIONS TO CITY COMMENTS 7/28/08	EDH



Czark
 Civil Engineering Inc.
 Bentonville • Kansas City • Austin

McDonald's®

THESE PLANS AND SPECIFICATIONS ARE THE PROPERTY OF MCDONALD'S CORPORATION AND SHALL NOT BE REPRODUCED WITHOUT THEIR WRITTEN PERMISSION.

KANSAS CITY
 10801 MASTIN BLVD., STE. 400, OVERLAND PARK, KS 66210

STATUS	DATE	BY
PRELIMINARY:	06/20/08	EDH
PLAN CHECKED:		
AS-BUILT:		
JOB NO:	07-0785	

C-6.2