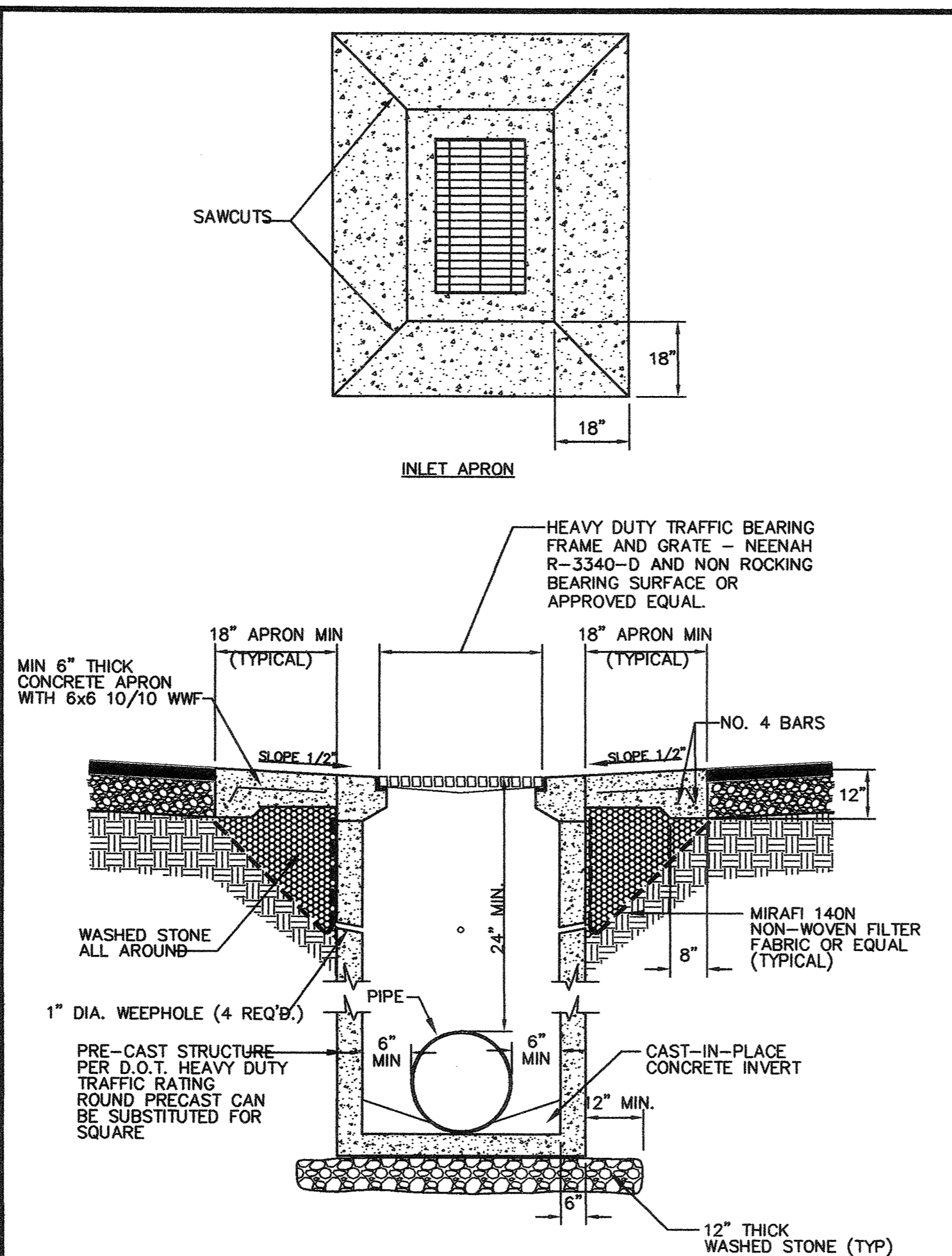
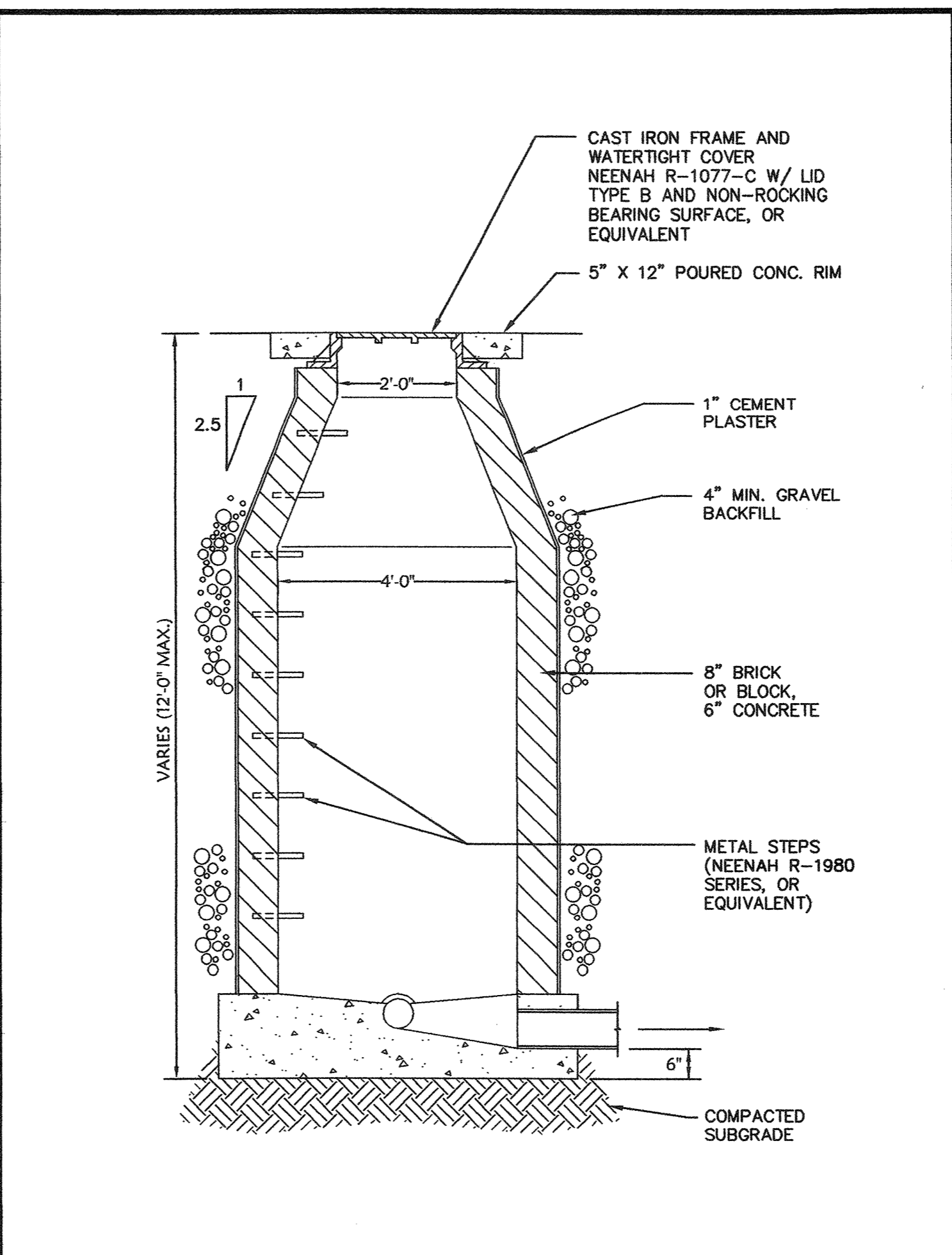


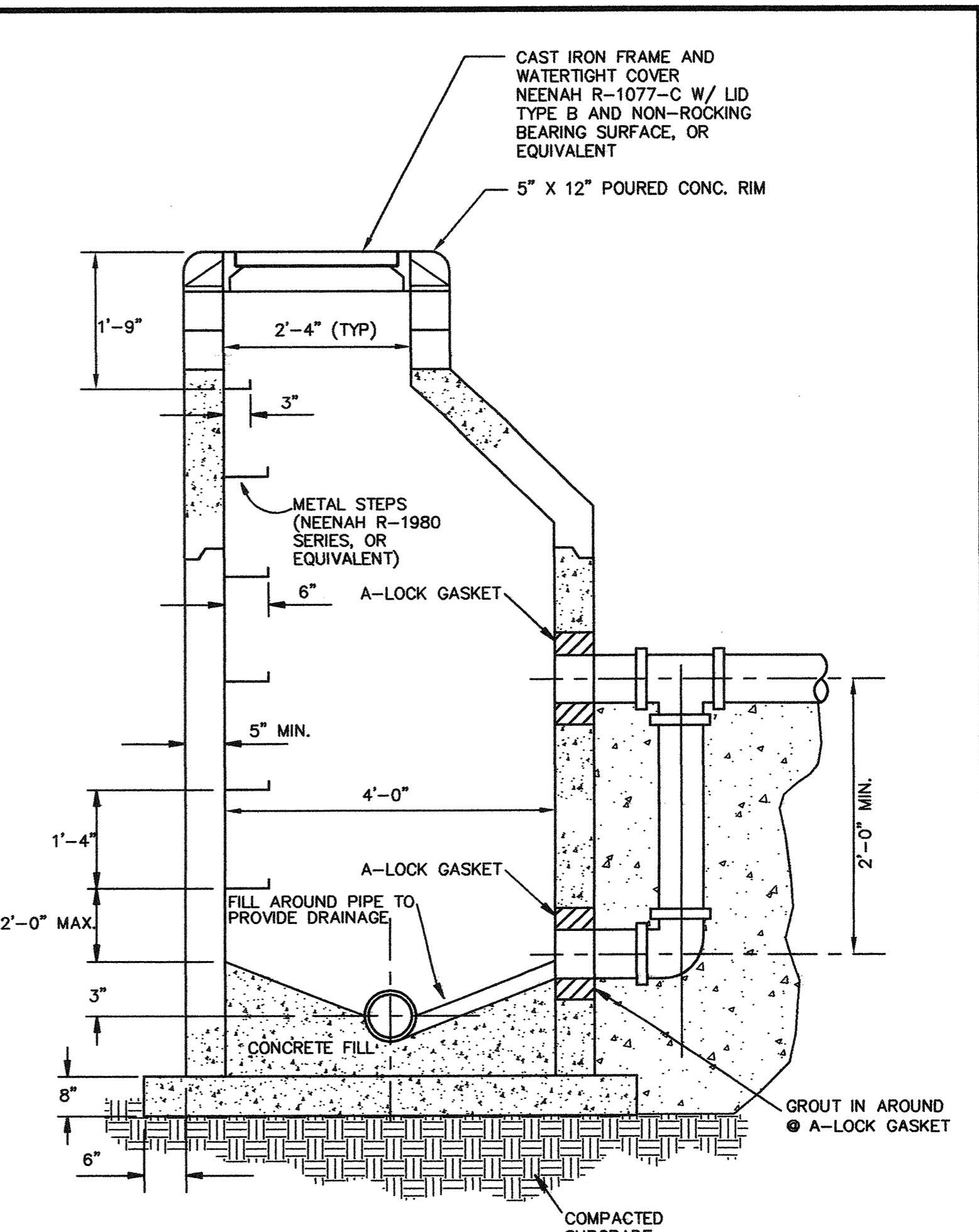
1 CURB DRAINAGE CATCH BASIN
Not To Scale



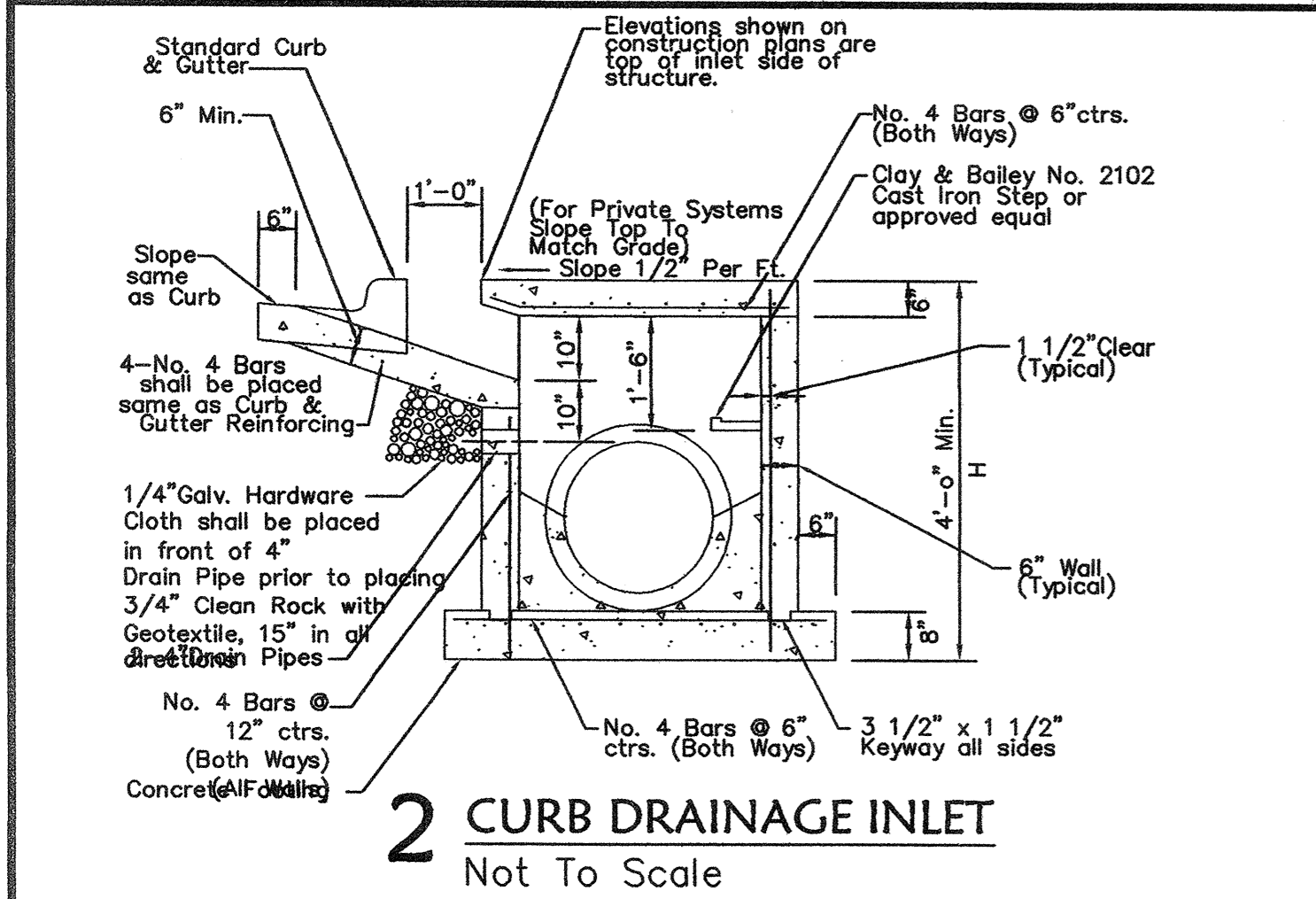
3 CATCH BASIN - PAVED AREAS
Not To Scale



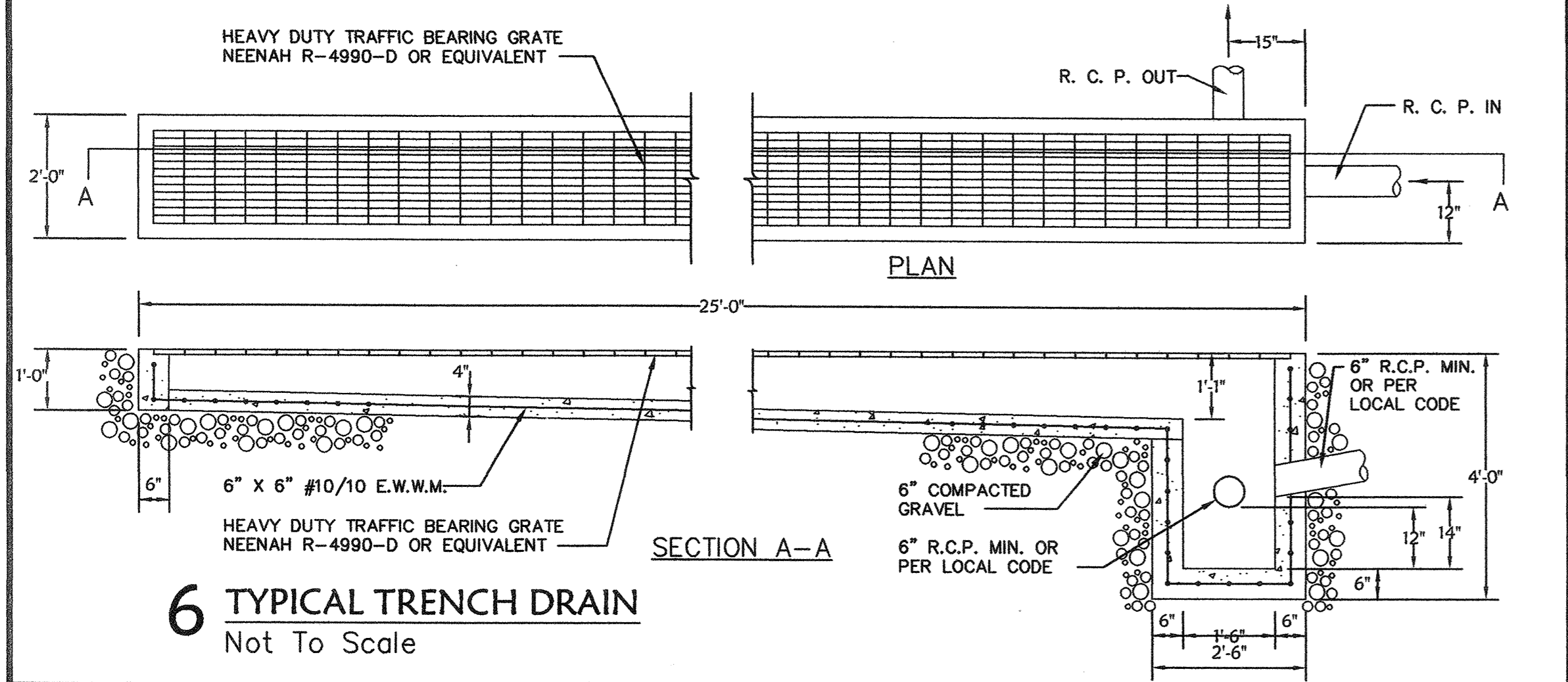
4 TYPICAL MANHOLE
Not To Scale



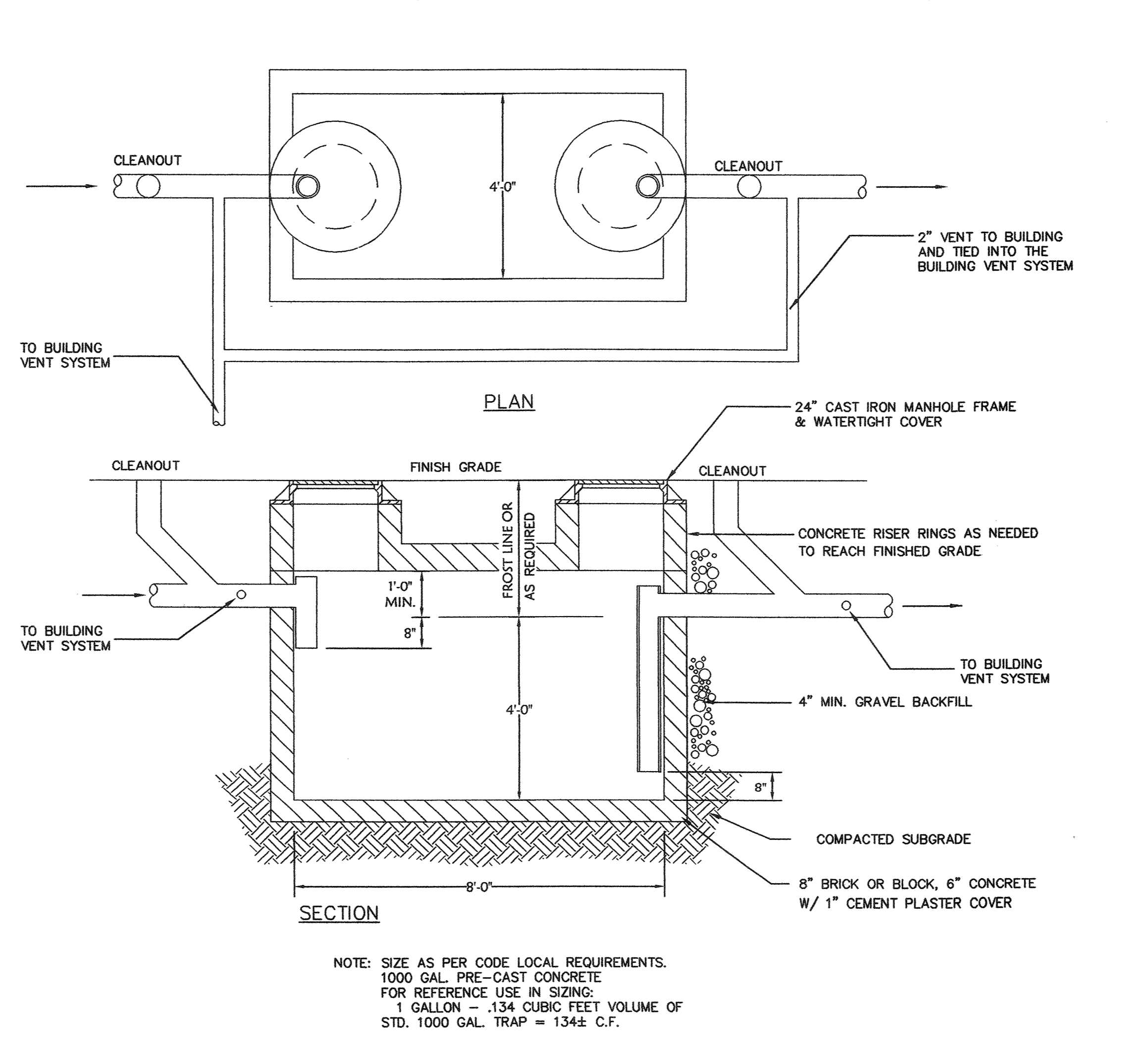
5 DROP MANHOLE
Not To Scale



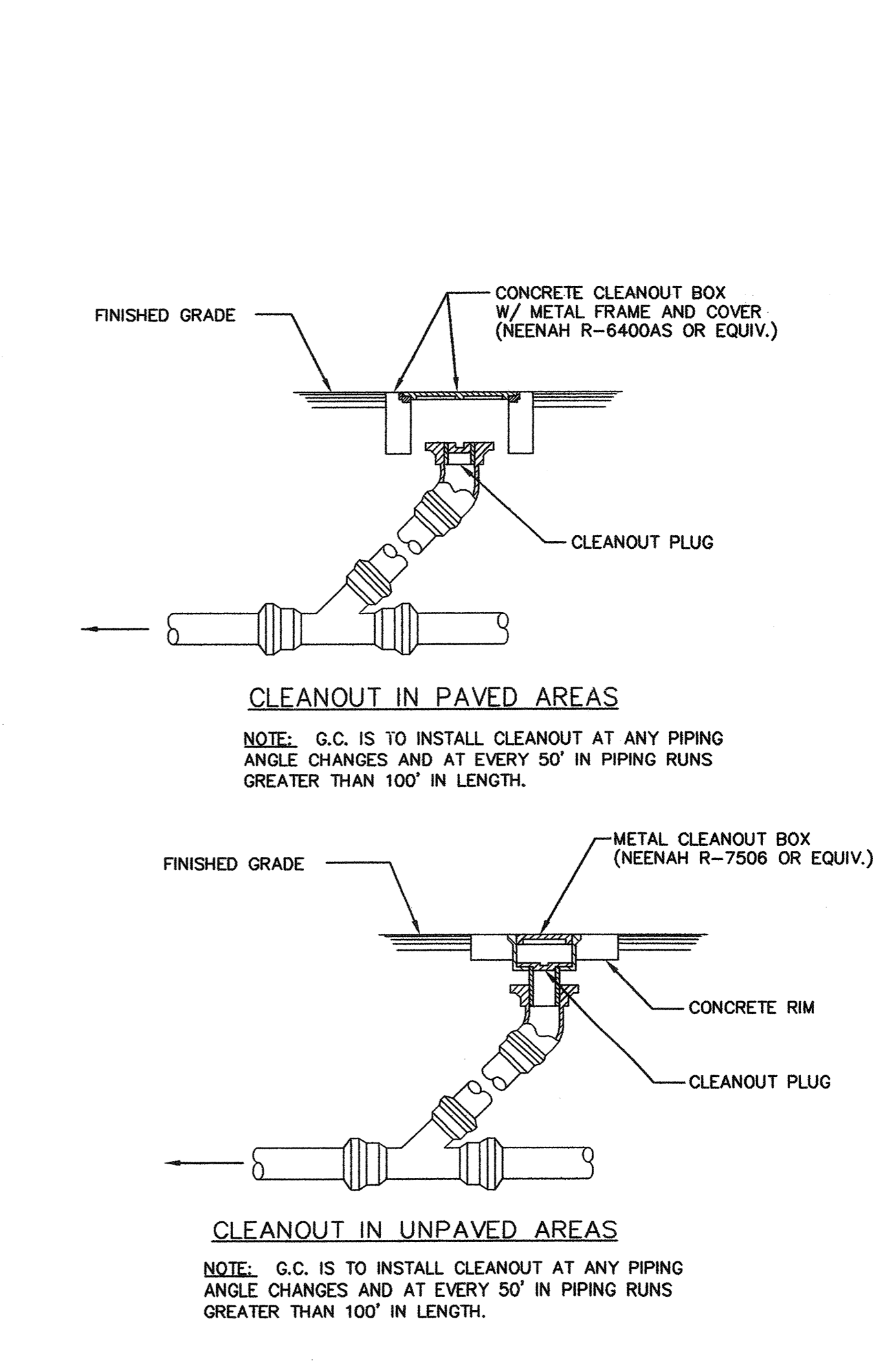
2 CURB DRAINAGE INLET
Not To Scale



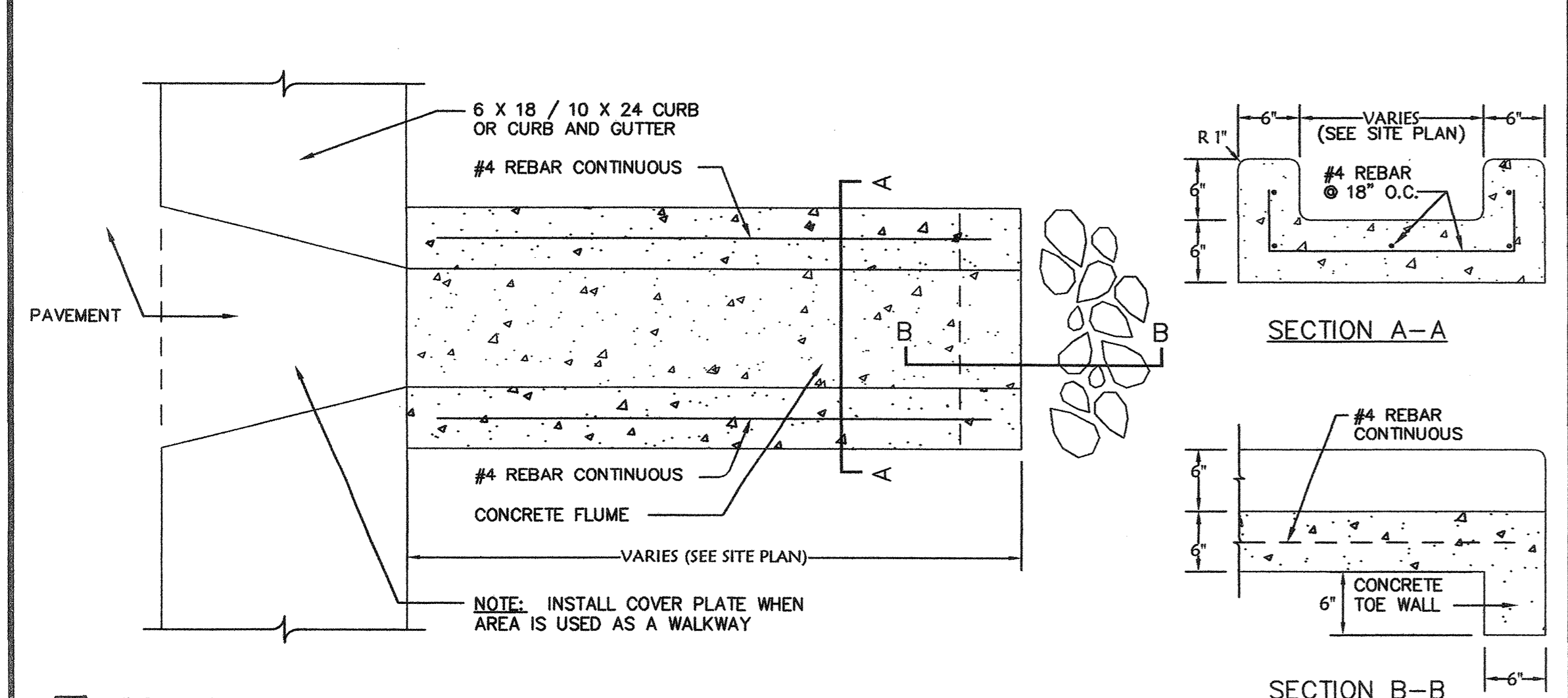
6 TYPICAL TRENCH DRAIN
Not To Scale



8 TYPICAL EXTERIOR GREASE TRAP
Not To Scale



9 EXTERIOR CLEANOUT
Not To Scale



7 CONCRETE FLUME
Not To Scale

DATE	DESCRIPTION	BY

DATE	DESCRIPTION	BY

Clark
Civil Engineering Inc.
Bentonville • Kansas City • Austin

McDonald's
THESE PLANS AND SPECIFICATIONS ARE THE PROPERTY OF MCDONALD'S CORPORATION AND SHALL NOT BE REPRODUCED WITHOUT THEIR WRITTEN PERMISSION.

OFFICE ADDRESS: 10801 MASTIN BLVD., STE. 400, OVERLAND PARK, KS 66210

STATUS	DATE	BY
PRELIMINARY:	-/-/-	-
PLAN CHECKED:	-	-
AS-BUILT:	-	-
JOB NO:	07-0785	

SD5