

# WATER LINE & FIRE HYDRANT TO SERVE Brandt Commercial Addition

Lot 3, Block 1  
Private Project Number: 1384 PPW (607853)

CITY OF WICHITA, KANSAS  
James Armour, P.E. City Engineer  
February 2008

### Bench Marks:

- SITE BENCH MARK:  
 Chiseled On Top Of West Walk Of Maize Road  
 Approximately 93.2' South of center line of existing North Drive.  
 Elevation = 1343.24 (NGVD 29)

### Index

Cover/Plan/Profile Sheet	1
Water Detail Sheet	2
Copy Of Plat	3
BMP Erosion Details	Available On Request

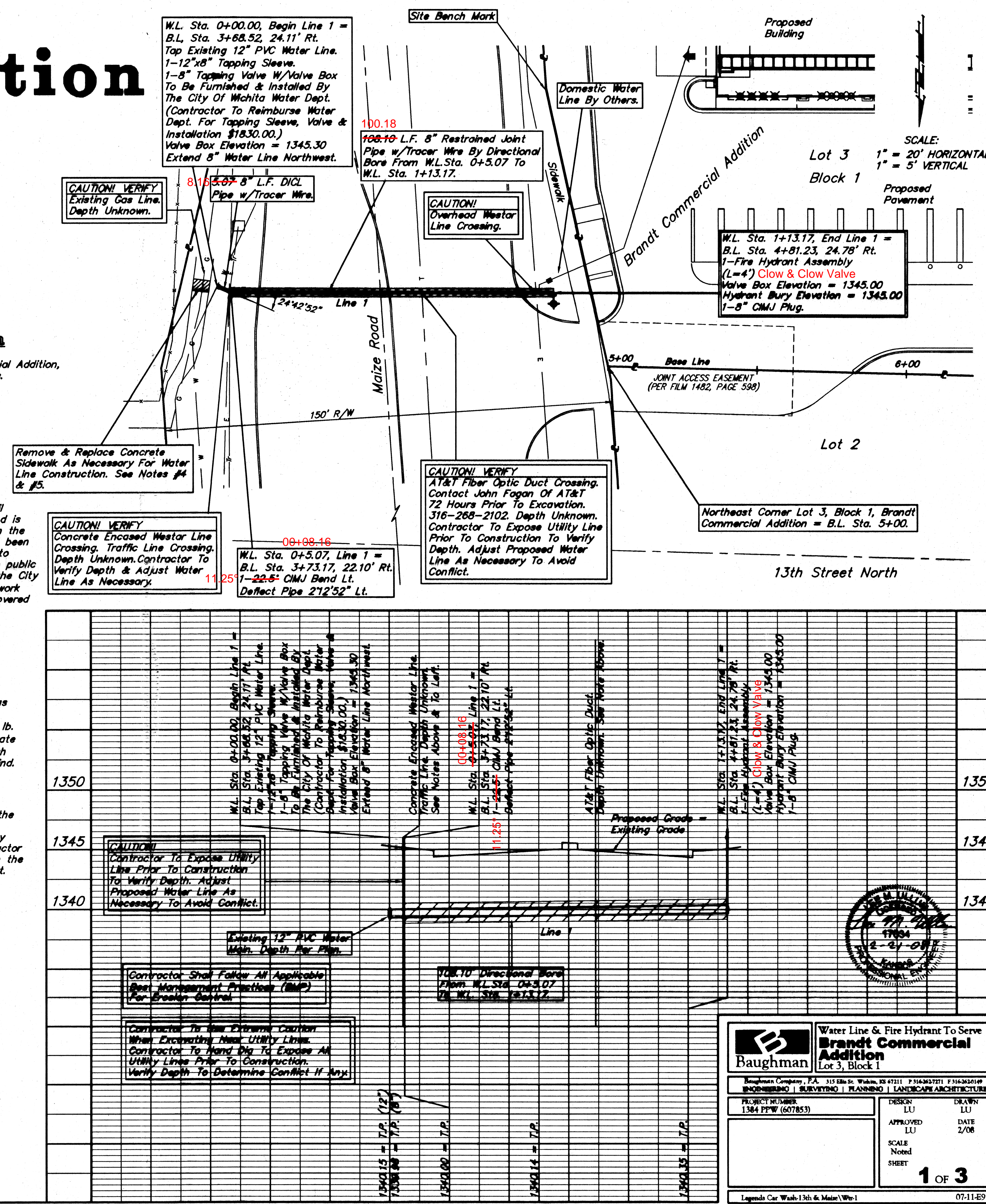
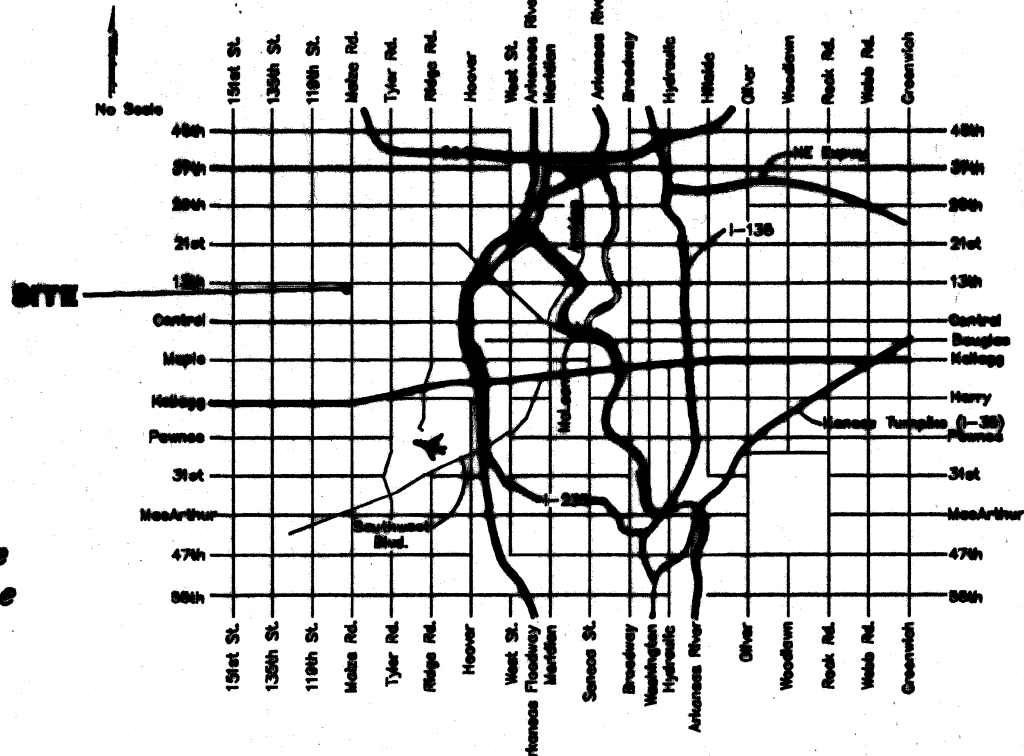
### Legal Description

Lot 3, Block 1, Brandt Commercial Addition, Wichita, Sedgwick County, Kansas.

### General Notes

- Contractor will be required to provide notice to utility companies a minimum of forty-eight (48) hours prior to any excavation, as follows:  
 Kansas One-Call 687-2470  
 The Contractor must notify the following in case of an emergency:  
 Cox Communications 262-4270  
 Kansas Gas Service Company 1-888-482-4950  
 Westar Energy (Electric) 383-8650  
 Aquila Energy (Gas) 1-800-303-0357  
 SBC (Telephone) 1-800-286-8313  
 City of Wichita Water Dept. (Water) 262-6000  
 City of Wichita Sewer Maint. (SS) 262-6000  
 City of Wichita Storm Sewer Maint. 268-4090  
 City of Wichita Traffic Maint. 268-4034
- Utility service lines, poles, valve boxes, meters, et cetera are to be adjusted as necessary by others prior to construction unless the plans specifically call for their adjustment by the Contractor or unless the plans specifically identify a utility to be adjusted by its owner during construction. Existing utilities and their location, as shown on the plans represent the best information obtainable for design and shall be field verified. The contractor will be required to work around existing utilities within the right-of-way which do not conflict with proposed construction.
- Rubble from the removal of miscellaneous structures and excess excavation which is to be wasted shall be disposed of on sites to be provided by the Contractor. These sites shall be approved by the Engineer as to suitability, appearance and site location. Locations that, in the opinion of the Engineer, will leave an unsightly appearance will not be approved. All disposal sites must be approved by the Kansas Department of Health and Environment. Material either stockpiled or disposed of in a flood plain would require a Kansas State Board of Agriculture permit. Any material dumped in waters of the United States or wetlands is subject to U.S. Corps. of Engineers permitting regulations. Any material buried or stockpiled beyond approved construction limits would require additional archaeological investigations unless buried in a previously approved borrow location.
- Contractor to remove concrete sidewalk to the nearest construction joint if within 3' of joint. Saw cut if over 3' from joint. Removal and replacement of pavement shall not be paid for directly, but shall be considered incidental to other items in the project.
- Cuts made to paved surfaces on public property will be repaired by the City's contractor and charged against the owner/applicant. Unit repair prices are available from the City at 268-4418. A surcharge may be applicable; call 268-4418 for details. Repair costs to be paid prior to release of sewer service if sewer service is affected. Contractor shall obtain permit prior to construction.
- Contractor shall not start work on the project until the project inspector is assigned to the project and is present on the site. Contractor shall not start on the project until all necessary bonds and permits have been obtained. Bonds may include but are not limited to Statutory, Performance & Maintenance for areas in public right-of-way and easement. For projects within the City of Wichita contact Tom Mason (268-4574). Any work done without inspection will be required to be uncovered for inspection.
- Water lines & appurtenances shall be installed in accordance with the most recent edition of City of Wichita, Kansas Standard Specifications for the Construction of City Projects.
- All disturbed R/W areas not intended for pavement or sidewalk construction shall be seeded with Kansas Premium Fescue Blend at a rate of 8 lb./1000 Sq. Ft., fertilized with a 16-20-6 ratio at a rate of 4 lb./1000 Sq. Ft. and mulched with Prairie Hay at a rate of 92 lb./1000 Sq. Ft. Mulch shall be "patted" with forks or punched into soil to reduce loss due to wind.
- Opening and closing of water valves shall be done slowly to prevent damage to the water distribution system from water hammer. All valves closed by the contractor must be reopened as new construction permits. Project inspector must ascertain that any valve closed by the contractor is reopened. Contractor will be permitted to operate water valves only when the project inspector assigned to the project is present.

### Location Map



## As Built Plans:

CONTRACTOR: McCullough Excavation  
 INSPECTOR: Larry Gann  
 COMPANY: K E Miller Engineering  
 PDF by: NWS, 10-21-08

APPROVED AS NOTED  
 BY CITY ENGINEER OF WICHITA,  
 BY WICHITA WATER & SEWER DEPARTMENT,  
 & BY WICHITA FIRE DEPARTMENT

Public Works *[Signature]* 3/7/08  
 Water & Sewer *[Signature]* 3/10/08  
 Fire *[Signature]* 3-24-08

NOTE TO CONTRACTORS  
 Inspection and testing for the waterline is to be provided by a Licensed Consulting Engineering Firm under contract with the Owner/Developer. Said inspection to be in accordance with the City of Wichita standard construction engineering practices and certified by a Professional Engineer Licensed in the state of Kansas. No work shall be performed in dedicated easements or public right-of-way by the Contractor without such inspection nor shall any work be commenced without written authorization by the City Engineer. All Construction and Materials shall comply with the City or Wichita Specifications and Standards (on file and available in the City Engineer's Office).

Water Line & Fire Hydrant To Serve  
**Brandt Commercial Addition**  
 Lot 3, Block 1

Baughman  
 ENGINEERING | SURVEYING | PLANNING | LANDSCAPE ARCHITECTURE

PROJECT NUMBER: 1384 PPW (607853)  
 DESIGNER: LU  
 DRAWN: LU  
 APPROVED: LU  
 DATE: 2/08  
 SCALE: Noted  
 SHEET: 1 OF 3

Legend: Car Wash-13th & Maize/Wr-1  
 07-11-E977