

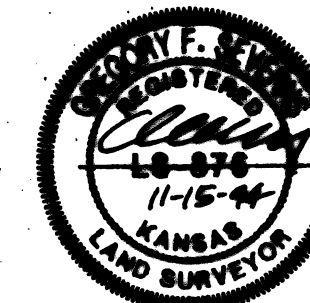
# BRANDT COMMERCIAL ADDITION

WICHITA, SEDGWICK COUNTY, KANSAS

State of Kansas) SS We, Baughman Company, P.A., Surveyors in  
Sedgwick County) do hereby certify that we have surveyed  
and platted "BRANDT COMMERCIAL ADDITION", to Wichita, Sedgwick County,  
Kansas and that the accompanying plat is a true and correct exhibit  
of the property surveyed, described as follows: Beginning at the N.E. Corner  
of the N.E. 1/4 of Sec. 18, Twp. 27-S, R-1-W of the 6th P.M., Sedgwick  
County, Kansas; thence N88°34'50"W along the north line of said N.E. 1/4,  
720 feet; thence S01°25'10"W perpendicular to the last described course,  
35 rods (577.5 feet) to a point on the north line of Lot 1, Block 1,  
Huntington Place 5th Addition, Wichita, Sedgwick County, Kansas; thence  
S88°34'50"E along the north line of said Lot 1 and along the north line  
of Ponderosa Circle as platted in Huntington Place Commercial, an  
Addition to Wichita, Sedgwick County, Kansas, 732.07 feet to a point  
40 feet west of the east line of said N.E. 1/4 as measured perpendicularly;  
thence N86°15'05"E perpendicular to the east line of said N.E. 1/4, 40 feet  
to the east line of said N.E. 1/4; thence N03°44'55"W along the east  
line of said N.E. 1/4, 576.25 feet to the point of beginning.

Existing easements and dedications being vacated by virtue  
of K.S.A. 12-512(b).

Baughman Company, P.A.



Gregory F. Severns  
Surveyor

Know all men by these presents that we, the  
undersigned, have caused the land in the surveyors certificate to be platted  
into lots, a block, and streets to be known as "BRANDT COMMERCIAL ADDITION",  
to Wichita, Sedgwick County, Kansas. The utility easements are hereby  
granted as indicated for construction and maintenance of all public utilities.  
The wall easements are hereby granted as indicated for the construction  
and maintenance of a private screening wall and utility main lines and  
service lines are allowed to cross these easements. The streets are  
hereby dedicated to and for the use of the public. Access controls  
as depicted on the face of the plat are hereby granted to the City  
of Wichita, Kansas.

Brandt Real Estate 13, L.L.C.

Earl O. Brandt  
Managing Member  
Earl O. Brandt

Railroad Savings Bank, F.S.B.

Douglas N. Starkweather  
Vice-President  
Douglas N. Starkweather

State of Kansas) SS The foregoing instrument acknowledged  
Sedgwick County) before me, this 12<sup>th</sup> day of November, 1994, by Earl O.  
Brandt, Managing Member of Brandt Real Estate 13, L.L.C., on behalf  
of Brandt Real Estate 13, L.L.C.

Mildred E. Franz  
Notary Public

My App't. Exp. 2-3-95

MILDRED E. FRANZ  
NOTARY PUBLIC  
STATE OF KANSAS

State of Kansas) SS The foregoing instrument acknowledged before  
Sedgwick County) me, this 29<sup>th</sup> day of November, 1994, by Douglas N. Starkweather  
Vice-President of Railroad Savings Bank, F.S.B., on behalf of the bank.

Annie Giroux  
Notary Public

My App't. Exp. 4-22-96

We, the undersigned, holders of a mortgage  
on the above described property do hereby consent to the  
plat of "BRANDT COMMERCIAL ADDITION", Wichita, Sedgwick County,  
Kansas.

Intrust Bank, N.A.

WM. R. SUMMERS  
UP

This plat of "BRANDT COMMERCIAL ADDITION", an  
Addition to Wichita, Sedgwick County, Kansas has been submitted to and  
approved by the Wichita-Sedgwick County Metropolitan Area Planning  
Commission, Wichita, Kansas.  
Dated this 22<sup>nd</sup> day of November, 1994.  
Wichita-Sedgwick County Metropolitan Area Planning Commission



James D. Miner  
Chairman

Marvin S. Krout  
Secretary

This plat approved and all dedications  
shown hereon accepted by the City Council of the City of Wichita,  
Kansas, this 12<sup>th</sup> day of December, 1994.



Elma Brookroot  
Mayor

Pat Burnett  
City Clerk



Entered on transfer record this 5<sup>th</sup> day  
of January, 1995  
Susan E. Crockett-Spoon  
County Clerk

#1430011

State of Kansas) SS This is to certify that this plat has been  
Sedgwick County) filed for record in the office of the Register of Deeds, this 5<sup>th</sup> day  
of JANUARY, 1995 at 1:30 o'clock P.M. and is duly recorded.



Pat Kettler  
Register of Deeds

Ed Resa  
Deputy

State of Kansas) SS The foregoing instrument acknowledged  
Sedgwick County) before me, this 29<sup>th</sup> day of November, 1994, by  
L. Don R. Summers, Vice President of Intrust Bank, N.A., on  
behalf of the bank.

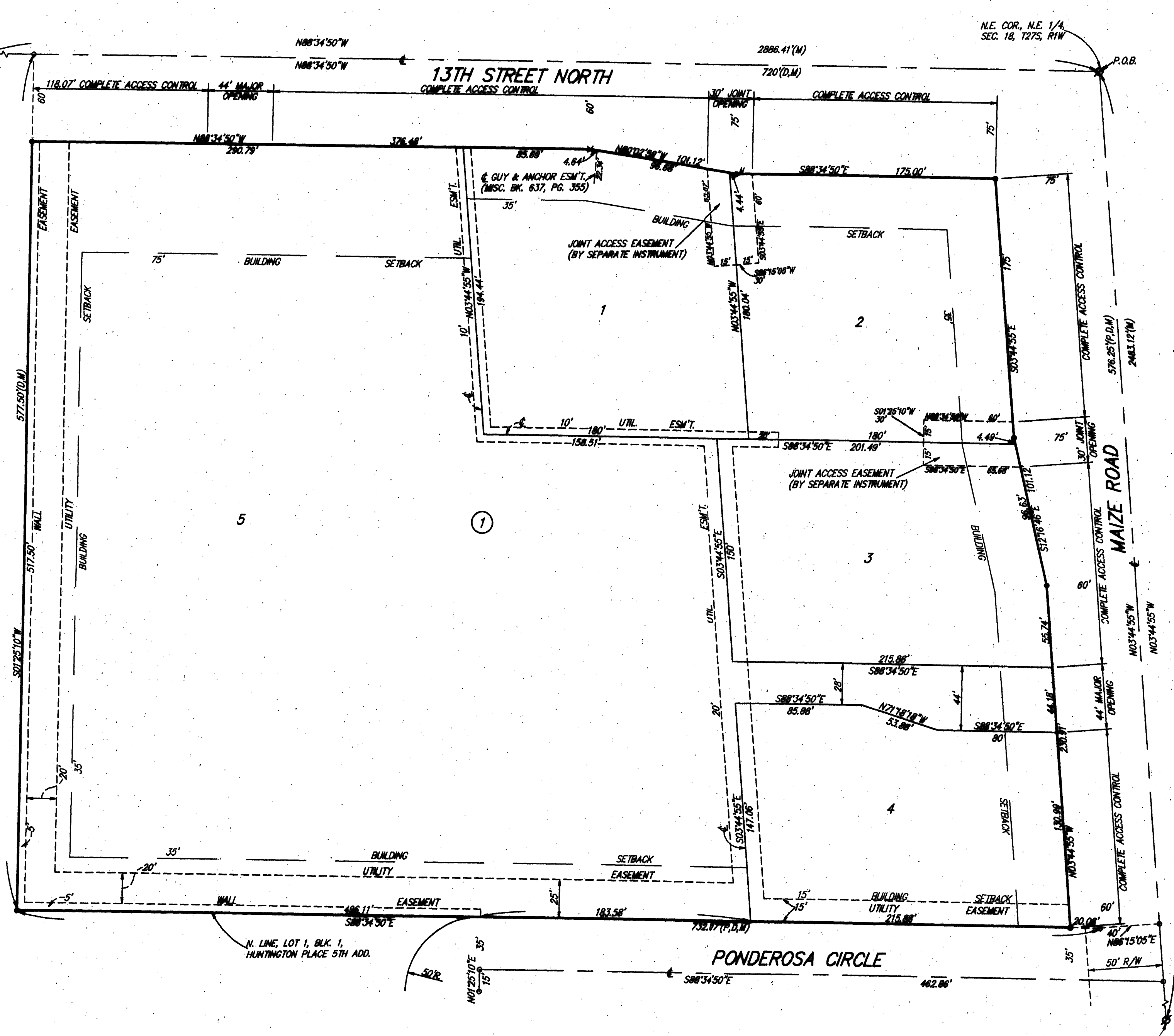
JOLEEN BARNHART  
Notary Public

My App't. Exp. 11-14-95

JOLEEN BARNHART  
Notary Public - State of Kansas  
My App't. Expires

- 1" = 50'
- = CONCRETE NAIL (SET)
- x = "CROSS" CUT (SET)
- = 1/2" REBAR W/ "BAUGHMAN" CAP (SET)
- ⊠ = TRIMBLE (FOUND)
- (M) = MEASURED
- (P) = PLATTED
- (D) = DESIGNED

NOTE:  
FOR ADDITIONAL BUILDING SETBACK REQUIREMENTS  
SEE ASSOCIATED COMMUNITY UNIT PLAN DP-214.



20.00  
ck