

# STORM & SANITARY SEWER PLANS TO SERVE THE HOME DEPOT ADDITION

PRIVATE PROJECT NO. 1700 PPS  
OCA #607861  
CITY OF WICHITA  
SEDGWICK COUNTY, KANSAS

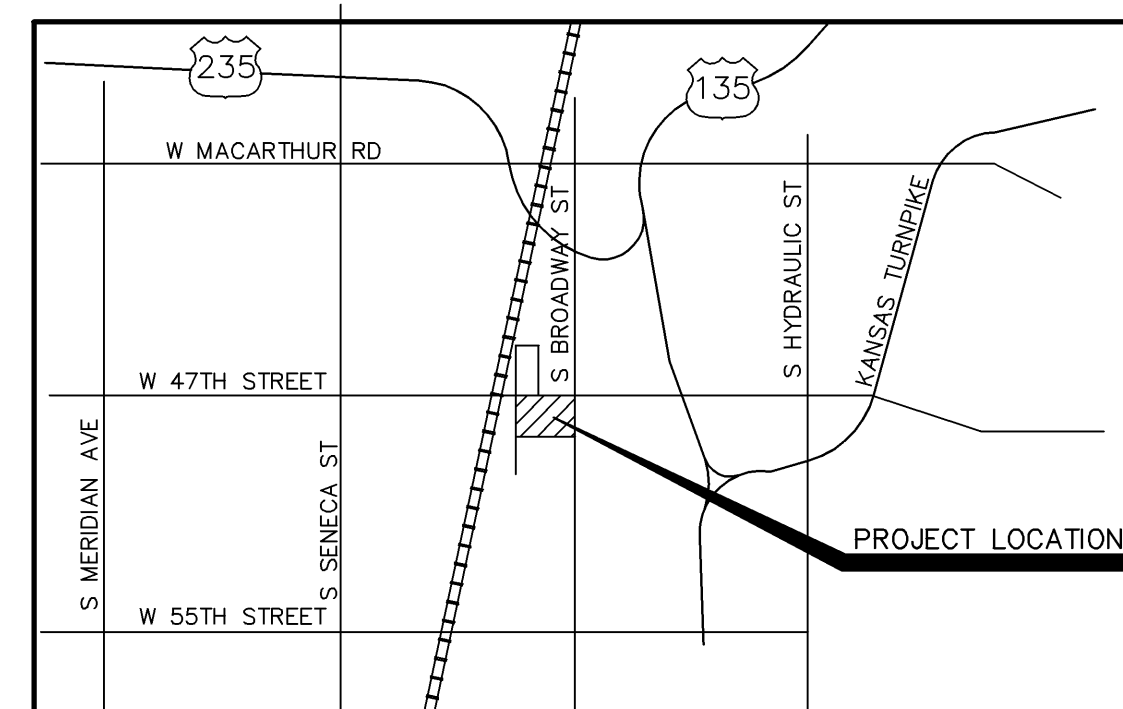
### GENERAL NOTES:

- THE CONTRACTOR WILL BE REQUIRED TO PROVIDE A MINIMUM ADVANCE NOTICE OF FOURTY-EIGHT (48) HOURS TO UTILITY COMPANIES PRIOR TO STARTING ANY EXCAVATION AS FOLLOWS:  

KANSAS ONE-CALL	1-800-344-7233
-----------------	----------------

THE CONTRACTOR MUST NOTIFY THE FOLLOWING IN CASE OF EMERGENCY:

KANSAS GAS SERVICE	1-316-832-3177
WESTAR ENERGY	1-316-261-6859
SOUTHWESTERN BELL TELEPHONE COMPANY	1-316-268-3122
CITY OF WICHITA WATER DEPARTMENT	1-316-268-4555
CITY OF WICHITA SEWER MAINTENANCE	1-316-268-4341
- THE CONTRACTOR SHALL BE RESPONSIBLE FOR PRESERVING PROPERTY IRONS. THE CONTRACTOR SHALL BE REQUIRED TO RE-ESTABLISH ANY PROPERTY IRONS WHICH ARE DAMAGED OR DESTROYED BY HIS CONSTRUCTION OPERATIONS. SUCH IRONS SHALL BE RE-ESTABLISHED BY A LICENSED LAND SURVEYOR IN ACCORDANCE WITH STATE LAWS.
- EXISTING UTILITIES AND THEIR LOCATIONS, AS SHOWN ON THE PLANS REPRESENT THE BEST INFORMATION OBTAINABLE FOR DESIGN. LOCATION INFORMATION HAS BEEN OBTAINED FROM THE VARIOUS COMPANIES AND IS EITHER FROM COMPANY UTILITY DRAWINGS OR COMPANY PROVIDED FIELD LOCATIONS. THE PLAN LOCATIONS SHOWN ARE NOT GUARANTEED. ADDITIONAL EXISTING UTILITIES MAY ALSO BE ENCOUNTERED.
- RUBBLE FROM THE REMOVAL OF MISCELLANEOUS STRUCTURES AND EXCESS EXCAVATION WHICH IS TO BE WASTED SHALL BE DISPOSED OF ON SITES TO BE PROVIDED BY THE CONTRACTOR. THESE SITES SHALL BE APPROVED BY THE ENGINEER AS TO SUITABILITY, APPEARANCE AND SITE LOCATION. LOCATIONS THAT, IN THE OPINION OF THE ENGINEER, WILL LEAVE AN UNSIGHTLY APPEARANCE WILL NOT BE APPROVED. ALL DISPOSAL SITES MUST BE APPROVED BY THE KANSAS DEPARTMENT OF HEALTH AND ENVIRONMENT. MATERIAL EITHER STOCKPILED OR DISPOSED OF IN A FLOOD PLAIN WOULD REQUIRE A KANSAS STATE BOARD OF AGRICULTURE PERMIT. ANY MATERIAL DUMPED IN WATERS OF THE UNITED STATES OR WETLANDS IS SUBJECT TO U.S. CORPS OF ENGINEERS PERMITTING REGULATIONS. ANY MATERIAL BURIED OR STOCKPILED BEYOND APPROVED CONSTRUCTION LIMITS WOULD REQUIRE ADDITIONAL ARCHEOLOGICAL INVESTIGATIONS UNLESS BURIED IN A PREVIOUSLY APPROVED BORROW LOCATION.
- UNLESS SHOWN OR STATED OTHERWISE ON THESE DRAWINGS, MATERIALS AND CONSTRUCTION SHALL BE IN ACCORDANCE WITH CITY OF WICHITA SPECIFICATIONS.
- SITE RESTORATION AND PREPARATION SHALL BE SUBSIDIARY TO THE PROJECT.



VICINITY MAP  
NOT TO SCALE



LEON D OSBOURN  
PROFESSIONAL ENGINEER

Larkin Excavating - Contractor  
Date Released - 09/22/08  
As-Built  
APR 10/21/08

WARRANTY / DISCLAIMER  
THE DESIGNS REPRESENTED IN THESE PLANS ARE IN ACCORDANCE WITH ESTABLISHED PRACTICES OF CIVIL ENGINEERING FOR THE DESIGN FUNCTIONS AND USES INTENDED BY THE OWNER AT THIS TIME. HOWEVER, NEITHER KAW VALLEY ENGINEERING, INC NOR ITS PERSONNEL CAN OR DO WARRANTY THESE DESIGNS OR PLANS AS CONSTRUCTED, EXCEPT IN THE SPECIFIC CASES WHERE KAW VALLEY ENGINEERING PERSONNEL INSPECT AND CONTROL THE PHYSICAL CONSTRUCTION ON A CONTEMPORARY BASIS AT THE SITE.

### CONTACT PERSON:

SAMUEL D. MALINOWSKY, P.E., KAW VALLEY ENGINEERING, INC. 785-762-5040

### CAUTION - NOTICE TO CONTRACTOR

THE CONTRACTOR IS SPECIFICALLY CAUTIONED THAT THE LOCATION AND/OR ELEVATION OF EXISTING UTILITIES AS SHOWN ON THESE PLANS IS BASED ON RECORDS OF THE VARIOUS UTILITY COMPANIES AND, WHERE POSSIBLE, MEASUREMENTS TAKEN IN THE FIELD. THE INFORMATION IS NOT TO BE RELIED ON AS BEING EXACT OR COMPLETE. THE CONTRACTOR MUST CALL THE APPROPRIATE UTILITY COMPANY AT LEAST 48 HOURS BEFORE ANY EXCAVATION TO REQUEST EXACT FIELD LOCATION OF UTILITIES. IT SHALL BE THE RESPONSIBILITY OF THE CONTRACTOR TO RELOCATE ALL EXISTING UTILITIES WHICH CONFLICT WITH PROPOSED IMPROVEMENTS SHOWN ON THE PLANS. **THE CONTRACTOR SHALL EXPOSE EXISTING UTILITIES AT LOCATIONS OF POSSIBLE CONFLICTS PRIOR TO ANY CONSTRUCTION.**

### SAFETY NOTICE TO CONTRACTOR

IN ACCORDANCE WITH GENERALLY ACCEPTED CONSTRUCTION PRACTICES, THE CONTRACTOR WILL BE SOLELY AND COMPLETELY RESPONSIBLE FOR CONDITIONS OF THE JOB SITE, INCLUDING SAFETY OF ALL PERSONS AND PROPERTY DURING PERFORMANCE OF THE WORK. THIS REQUIREMENT WILL APPLY CONTINUOUSLY AND NOT BE LIMITED TO NORMAL WORKING HOURS.

APPROVED AS NOTED  
BY CITY ENGINEER OF WICHITA

STORM SEWERS \_\_\_\_\_

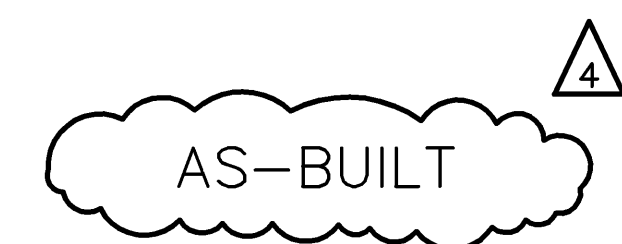
SANITARY SEWERS \_\_\_\_\_

### NOTE TO CONTRACTOR

INSPECTION AND TESTING FOR THIS PROJECT IS TO BE PROVIDED BY A LICENSED CONSULTING ENGINEERING FIRM UNDER CONTRACT WITH THE OWNER / DEVELOPER. SAID INSPECTION TO BE IN ACCORDANCE WITH THE CITY OF WICHITA STANDARD CONSTRUCTION ENGINEERING PRACTICES AND CERTIFIED BY A LICENSED PROFESSIONAL ENGINEER. NO WORK SHALL BE PERFORMED IN DEDICATED EASEMENTS OR THE PUBLIC RIGHT-OF-WAY BY THE CONTRACTOR WITHOUT SUCH INSPECTION NOR SHALL ANY WORK BE COMMENCED IN DEDICATED EASEMENTS OR PUBLIC RIGHT-OF-WAY WITHOUT WRITTEN AUTHORIZATION BY THE CITY ENGINEER.

### INDEX TO SHEETS:

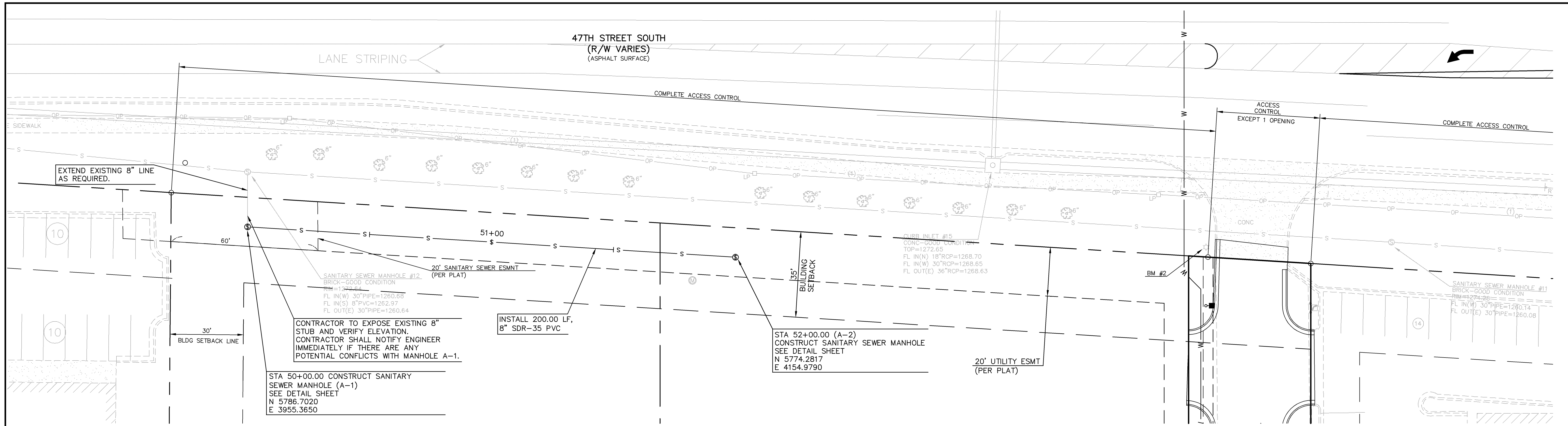
- TITLE SHEET
- PROJECT CONTROL PLAN & GENERAL LAYOUT SHEET
- SANITARY SEWER PLAN AND PROFILE - LINE "A" & "B"
- 4-5. STORM SEWER LINE "A" - PLAN AND PROFILE
6. STORM SEWER LINE "B" & "D" - PLAN AND PROFILE
7. STORM SEWER LINE "C" - PLAN AND PROFILE
8. STANDARD TYPE "P" MANHOLES
9. STANDARD TYPE I CURB INLET - 5'-0" OPENING
10. STANDARD TYPE I CURB INLET - 10'-0" OPENING
- 11-14. SOIL EROSION BMP DETAILS
15. DETAILS



### BENCHMARKS:

- BM #1: CITY OF WICHITA BENCHMARK - 2 1/2" BRASS DISC FOUND AT THE NORTHEAST CORNER OF THE TRAFFIC SIGNAL POLE CONCRETE BASE AT THE SOUTHWEST QUADRANT OF 47TH STREET SOUTH & BROADWAY. CITY OF WICHITA DATUM=87.44 MSL ELEV=1274.84
- BM #2: CHISELED SQUARE FOUND IN TOP OF CONCRETE LIGHT POLE BASE ON NORTH SIDE OF POLE. WEST OF WEST ENTRANCE INTO BURGER KING. CITY OF WICHITA DATUM=87.69 MSL ELEV=1275.09
- BM #3: CHISELED SQUARE SET, 0.5' EAST OF CORNER OF CURB ON TOP OF CURB AT SOUTHWEST CORNER OF PARKING LOT FOR DOLLAR GENERAL. CITY OF WICHITA DATUM=87.28 MSL ELEV=1274.68
- BM #4: NORTHEAST CAP BOLT ON FIRE HYDRANT AT SOUTHEAST CORNER OF OLD GROCERY STORE. CITY OF WICHITA DATUM=87.76 MSL ELEV=1275.16
- BM #5: CHISELED SQUARE SET AT NORTHWEST CORNER OF CURB INLET AT NORTHWEST QUADRANT OF 48TH STREET SOUTH AND BROADWAY. CITY OF WICHITA DATUM=86.01 MSL ELEV=1273.41

AS BUILT PLANS	5-13-08	REV	DATE	DESCRIPTION	DSN	DWN	CHK
REVISED PER ADDENDUM "A"	2-1-08	3					
REVISED PER CITY	12-21-08	2					
REVISED PER CITY	11-27-08	1					
INITIAL ISSUE	8-18-08	0					
<b>THE HOME DEPOT ADDITION</b> <b>47TH STREET SOUTH &amp; BROADWAY AVENUE</b> <b>WICHITA, KANSAS</b>							
<b>TITLE SHEET</b>							
PROJ. NO. <b>A06 2806</b> DATE <b>AUG 2006</b> DESIGNER <b>SDM</b> DRAWN BY CFN <b>2806DTS</b> JL SHEET <b>1 OF 15</b> REV <b>4</b>							
2319 NORTH JACKSON P.O. BOX 1304 JUNCTION CITY, KANSAS 66441 785-762-5040 FAX 785-762-7744 E-MAIL jc@kveing.com WEB SITE www.kveing.com KAW VALLEY ENGINEERING, INC. - CONSULTING ENGINEERS Offices: Junction City, Mo., Kansas City, Mo., Lenexa, Ks.							



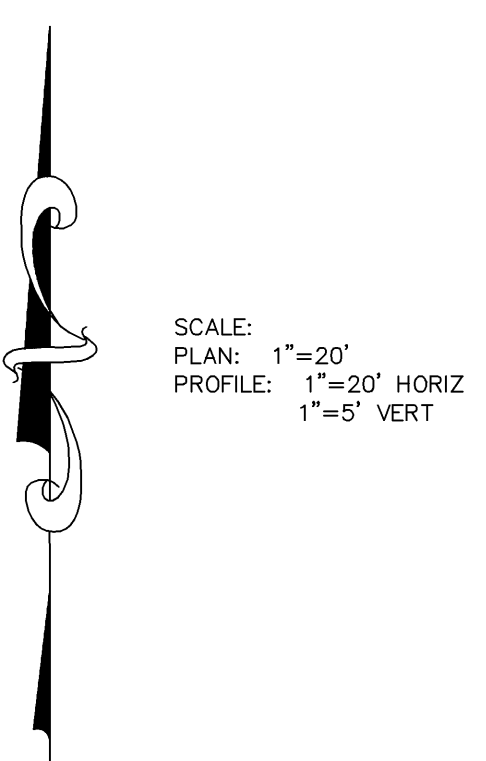
REV	DATE	DESCRIPTION
4	5-13-08	AS BUILT PLANS
2	12-21-08	REVISED PER CITY
1	11-27-08	REVISED PER CITY
0	8-18-08	INITIAL ISSUE



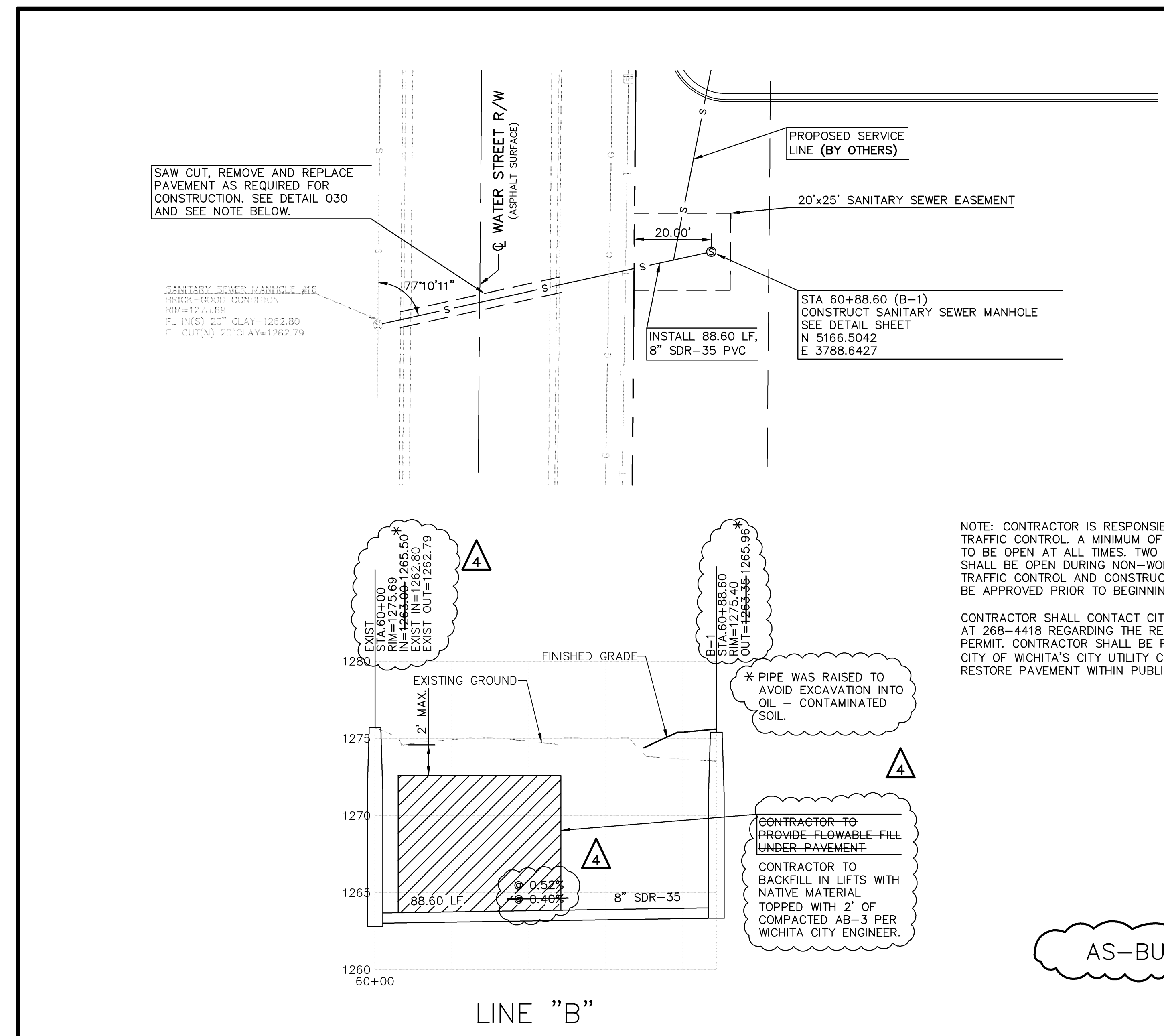
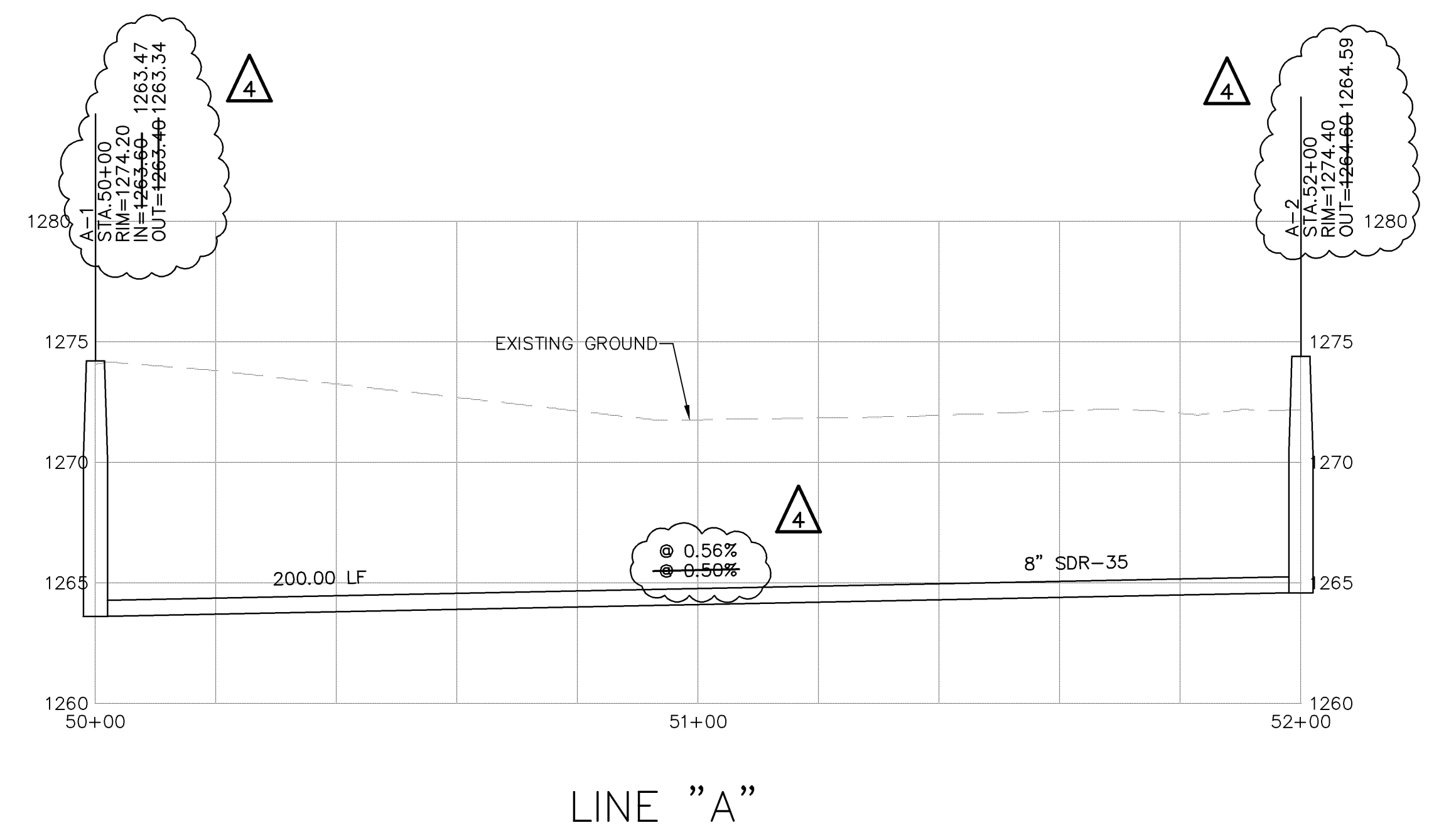
2319 NORTH JACKSON  
 P.O. BOX 1304  
 JUNCTION CITY, KANSAS 66441  
 785-762-5040 FAX 785-762-7744  
 E-MAIL jc@kveing.com  
 WEB SITE www.kveing.com

KAW VALLEY ENGINEERING, INC. - CONSULTING ENGINEERS  
 Offices: Junction City, ks. Kansas City, Mo. Lenexa, Ks.

THE HOME DEPOT ADDITION 47TH STREET SOUTH & BROADWAY AVENUE WICHITA, KANSAS	
PROJ. NO.	A06_2806
DATE	AUG 2006
DESIGNER	SDM
DRAWN BY	JL
CFN	2806SPP
SHEET	3 OF 15
SANITARY SEWER LINE "A" & "B" - PLAN & PROFILE	
DSN	DWN
CHK	CHK



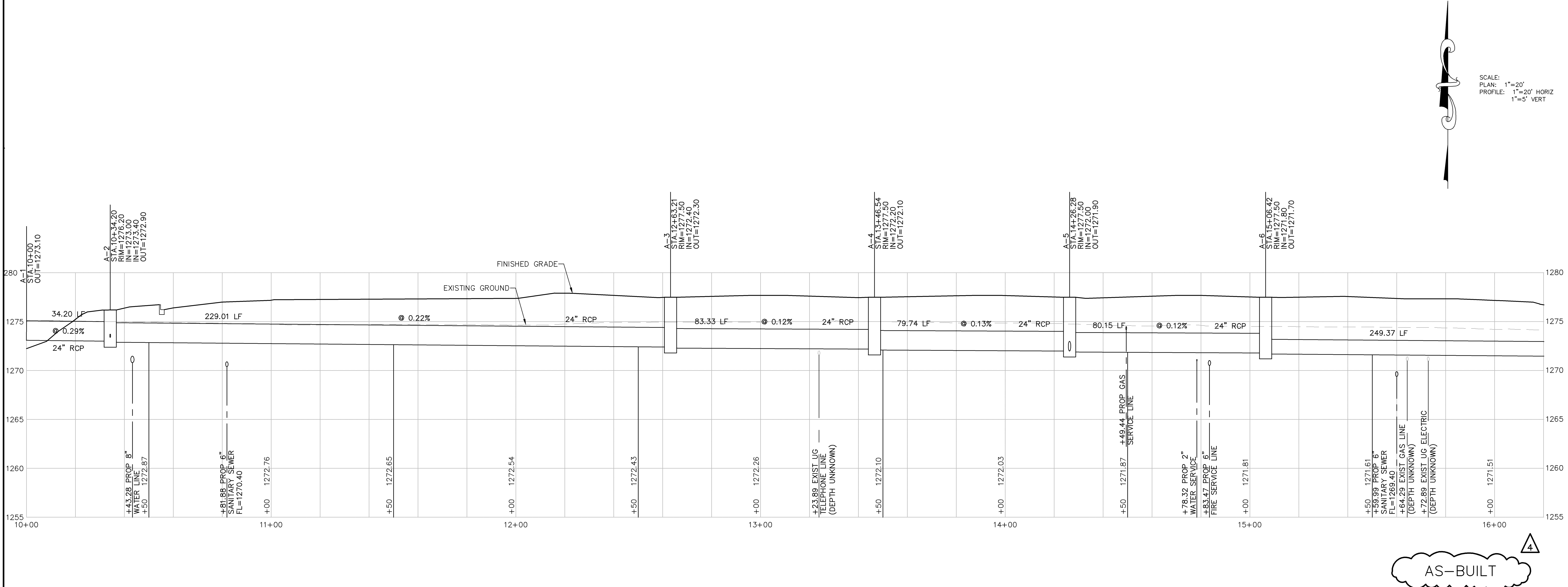
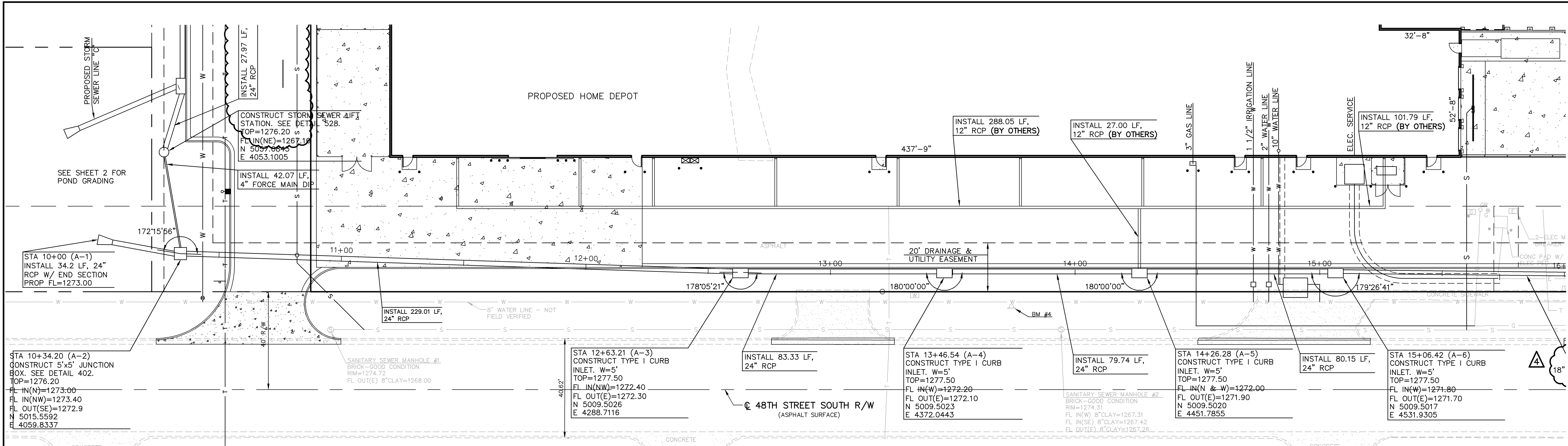
SCALE:  
 PLAN: 1"=20'  
 PROFILE: 1"=20' HORIZ  
 1"=5' VERT



NOTE: CONTRACTOR IS RESPONSIBLE FOR PROVIDING ALL TRAFFIC CONTROL. A MINIMUM OF ONE LANE OF TRAFFIC TO BE OPEN AT ALL TIMES. TWO LANES OF TRAFFIC SHALL BE OPEN DURING NON-WORKING TIMES. PROPOSED TRAFFIC CONTROL AND CONSTRUCTION SEQUENCING MUST BE APPROVED PRIOR TO BEGINNING CONSTRUCTION.

CONTRACTOR SHALL CONTACT CITY ENGINEER'S OFFICE AT 268-4418 REGARDING THE REQUIRED UTILITY CUT PERMIT. CONTRACTOR SHALL BE REQUIRED TO USE THE CITY OF WICHITA'S CITY UTILITY CUT CONTRACTOR TO RESTORE PAVEMENT WITHIN PUBLIC RIGHT-OF-WAY.

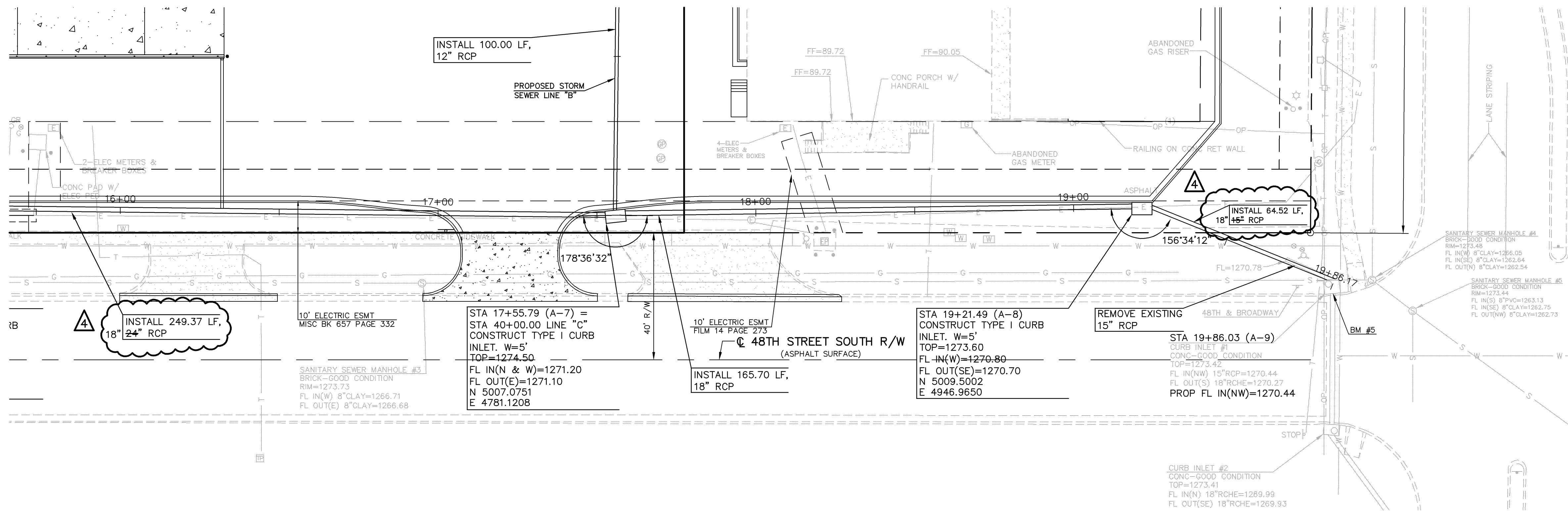
AS-BUILT



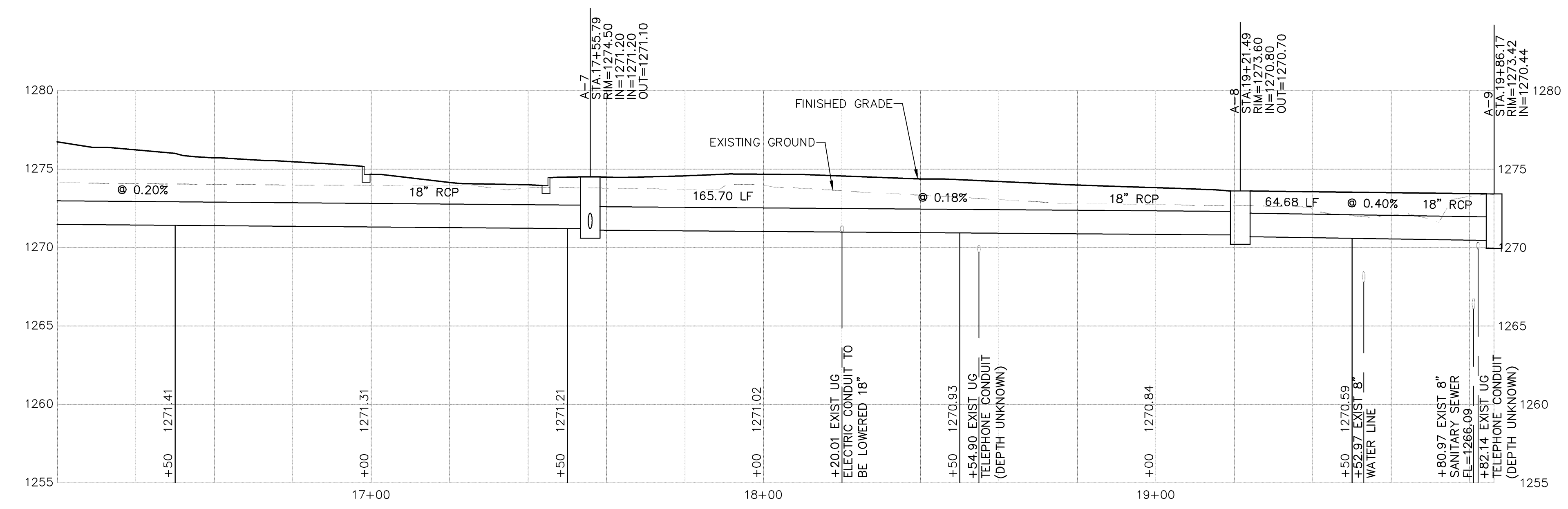
AS-BUILT

SCALE:  
PLAN: 1"=20'  
PROFILE: 1"=20' HORIZ  
1"=5' VERT

PROJ. NO. A06_2806		DATE AUG 2006		DESIGNER SDM		DRAWN BY JL		CFN 2806DPP		SHEET 4 OF 15	
THE HOME DEPOT ADDITION 47TH STREET SOUTH & BROADWAY AVENUE WICHITA, KANSAS		STORM SEWER LINE 'A' - PLAN & PROFILE		KAW VALLEY ENGINEERING, INC. - CONSULTING ENGINEERS Offices: Junction City, ks. Kansas City, Mo. Lenexa, ks.				2319 NORTH JACKSON P.O. BOX 1304 JUNCTION CITY, KANSAS 66441 785-762-5040 FAX 785-762-7744 E-MAIL jk@kveing.com WEB SITE www.kveing.com		5-13-08 AS BUILT PLANS 11-27-06 REVISED PER CITY 8-18-06 INITIAL ISSUE	
REV	DATE	DESCRIPTION		DSN	DWN	CHK					



SCALE: 1"=20'  
 PLAN: 1"=20' HORIZ  
 PROFILE: 1"=5' VERT



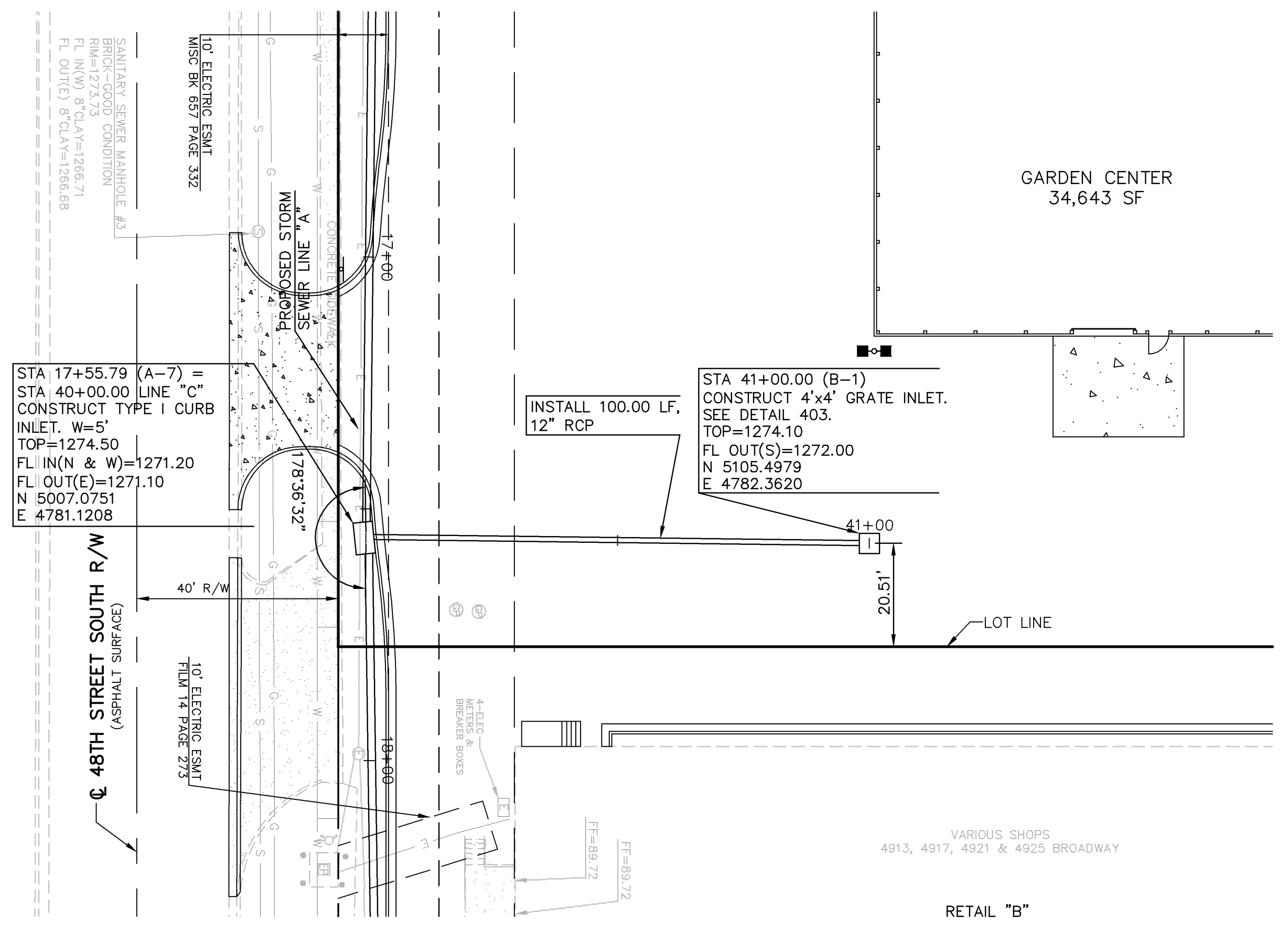
AS-BUILT

ELEVATION DATUM REVISED TO M.S.L.

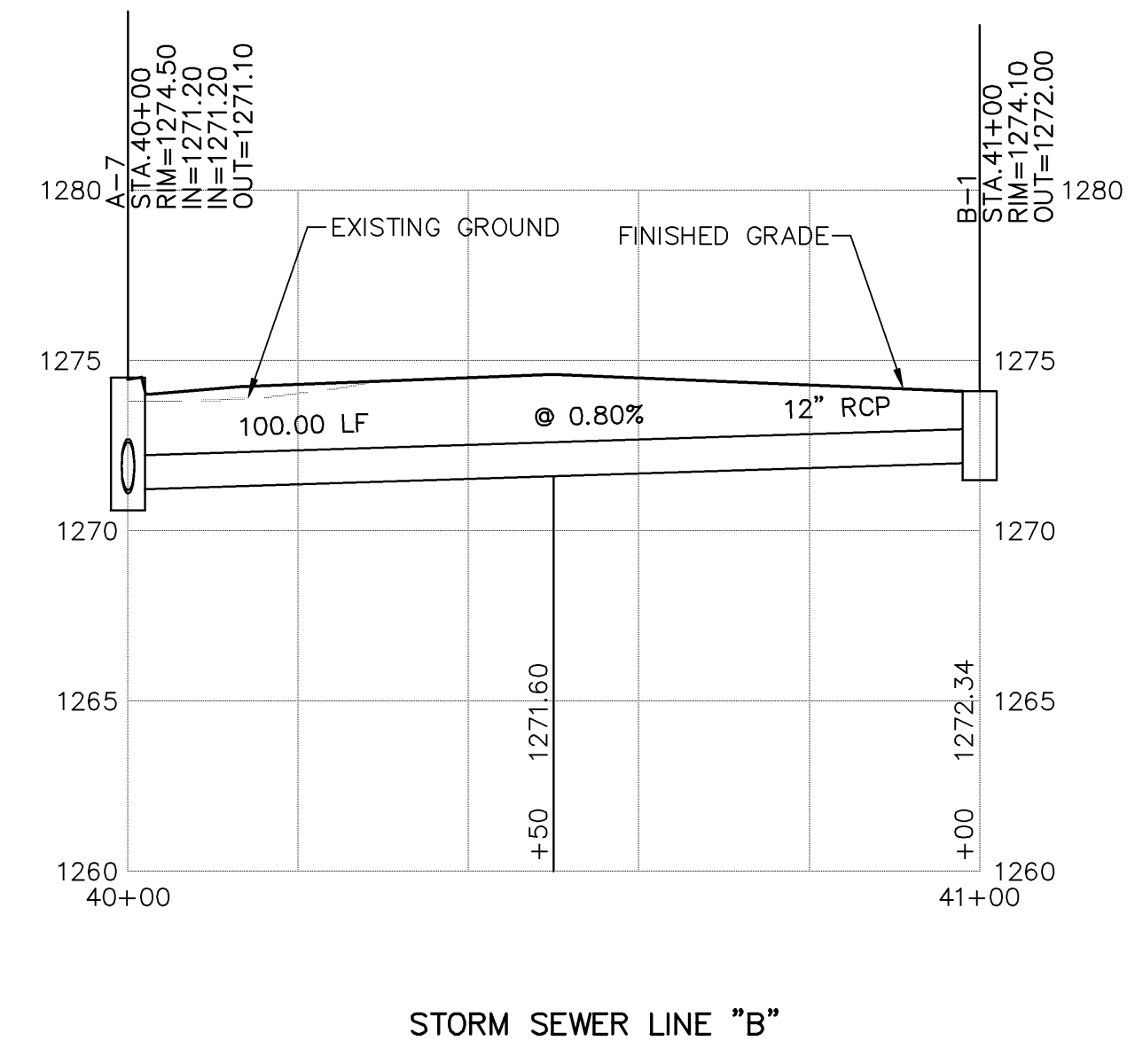
PROJ. NO. A06 2806		DATE AUG 2006		DESIGNER SDM		DRAWN BY JL		CFN 2806DPP		SHEET 5 OF 15					
THE HOME DEPOT ADDITION 47TH STREET SOUTH & BROADWAY AVENUE WICHITA, KANSAS		STORM SEWER LINE 'A' - PLAN & PROFILE		KAW VALLEY ENGINEERING, INC. - CONSULTING ENGINEERS Offices: Junction City, ks. Kansas City, Mo. Lenexa, Ks.				2319 NORTH JACKSON P.O. BOX 1304 JUNCTION CITY, KANSAS 66441 785-762-5040 FAX 785-762-7744 E-MAIL jk@kveing.com WEB SITE www.kveing.com		4 5-13-08 AS BUILT PLANS 1 11-27-06 REVISED PER CITY 0 8-18-06 INITIAL ISSUE		REV DATE DESCRIPTION		DSN DWN CHK	

G:\A06\_2806\DESIGN\STORM & SANITARY\AS BUILT\2806DPP.dwg, 5/13/2008 9:07:57 AM, jll

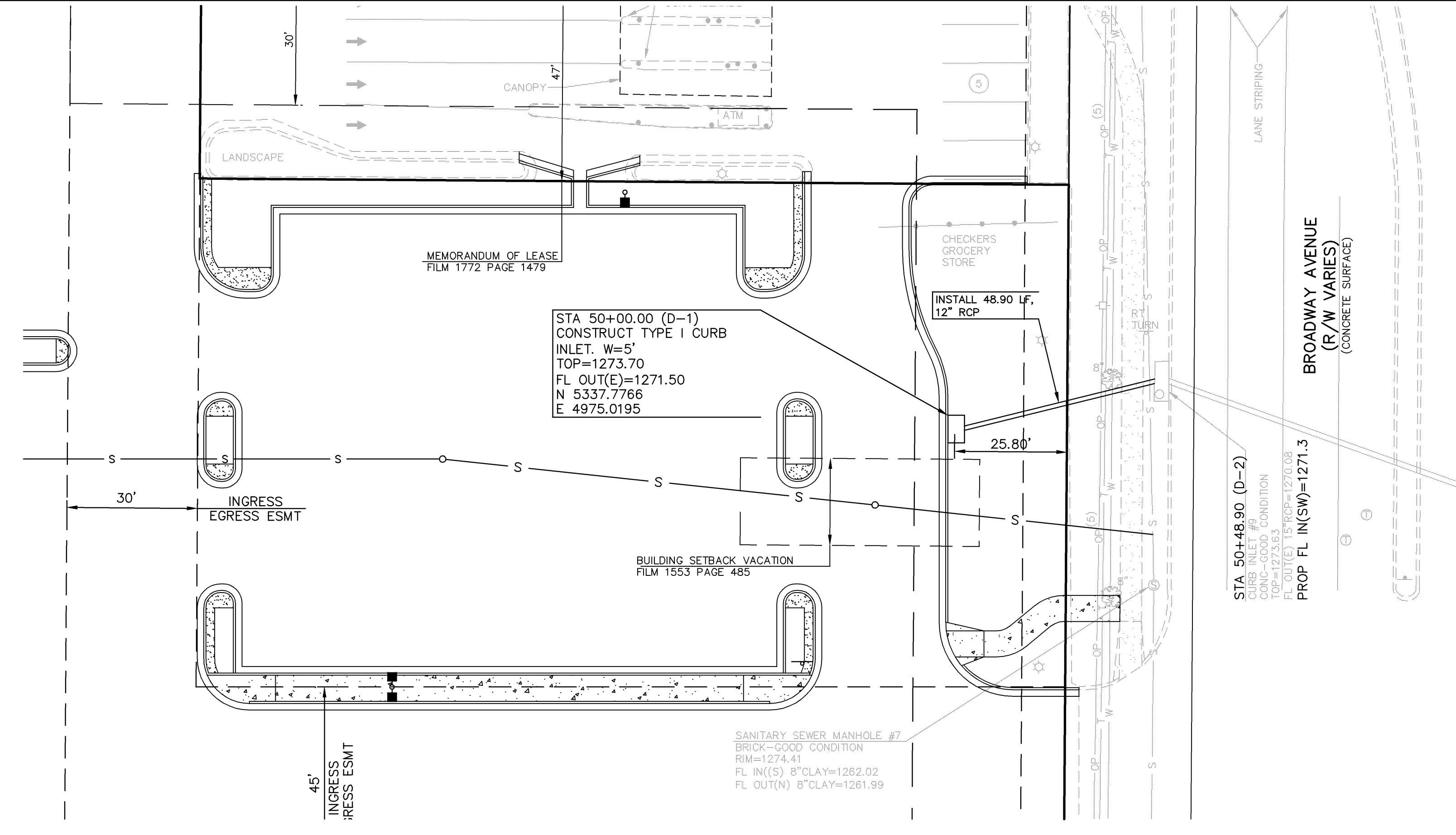
THIS DRAWING SHALL NOT BE UTILIZED BY ANY PERSON, FIRM, OR CORPORATION IN WHOLE OR IN PART WITHOUT THE SPECIFIC PERMISSION OF KAW VALLEY ENGINEERING, INC.



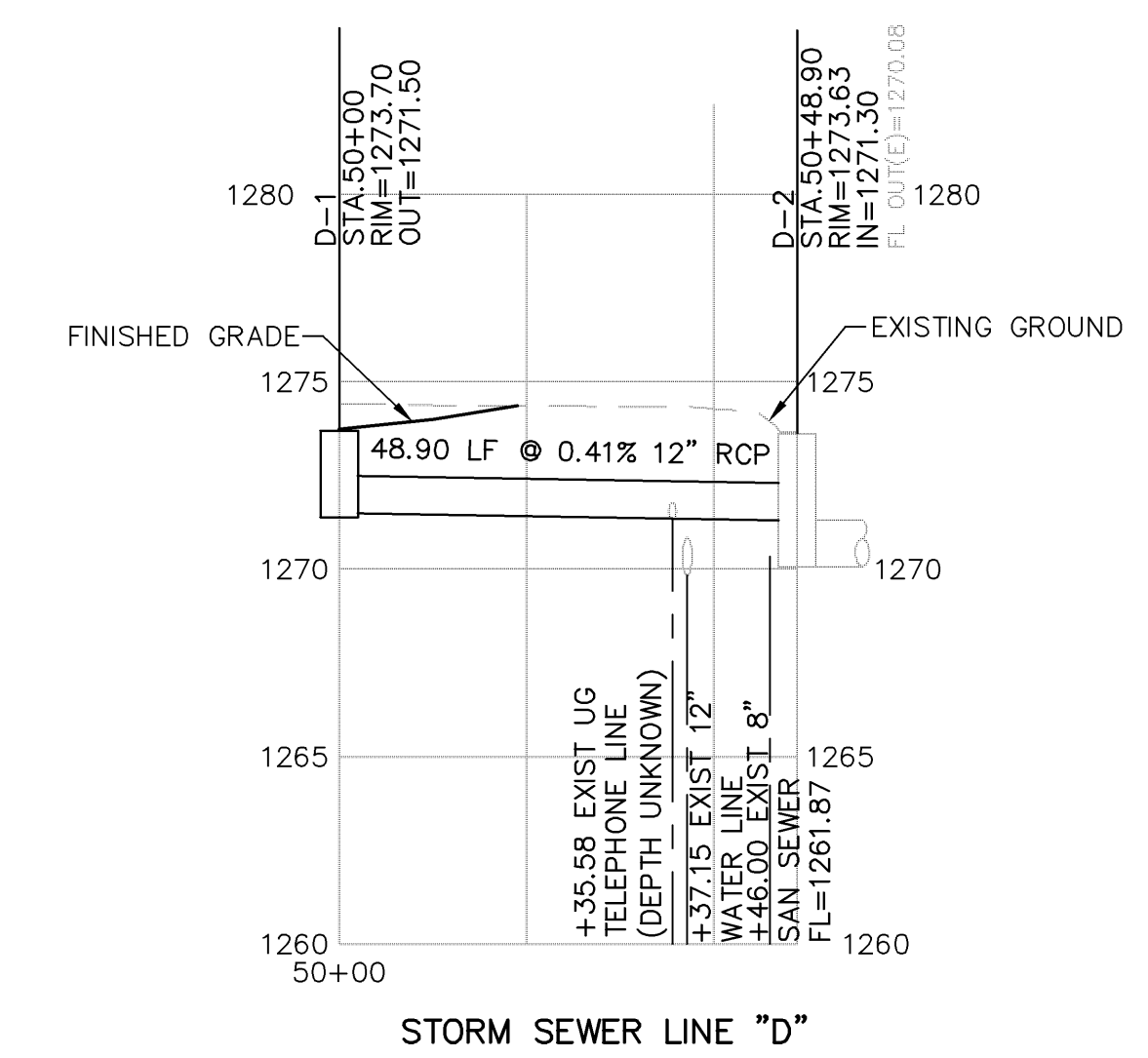
SCALE:  
 PLAN: 1"=20'  
 PROFILE: 1"=20' HORIZ  
 1"=5' VERT



STORM SEWER LINE "B"



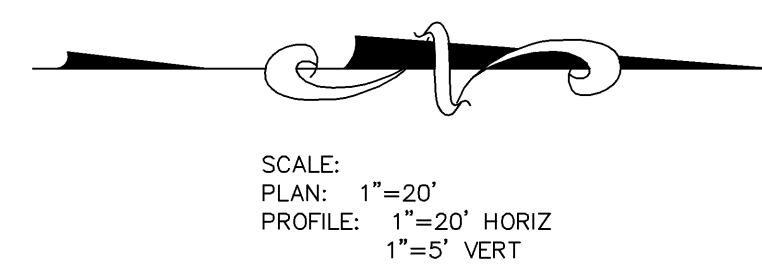
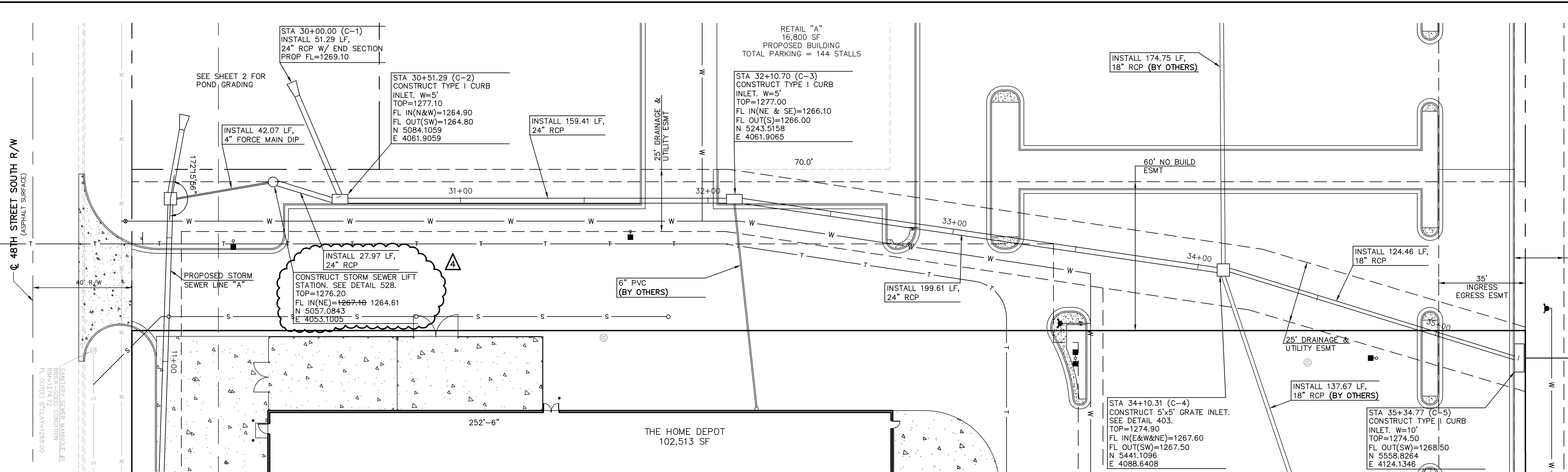
ELEVATION DATUM REVISED TO M.S.L.



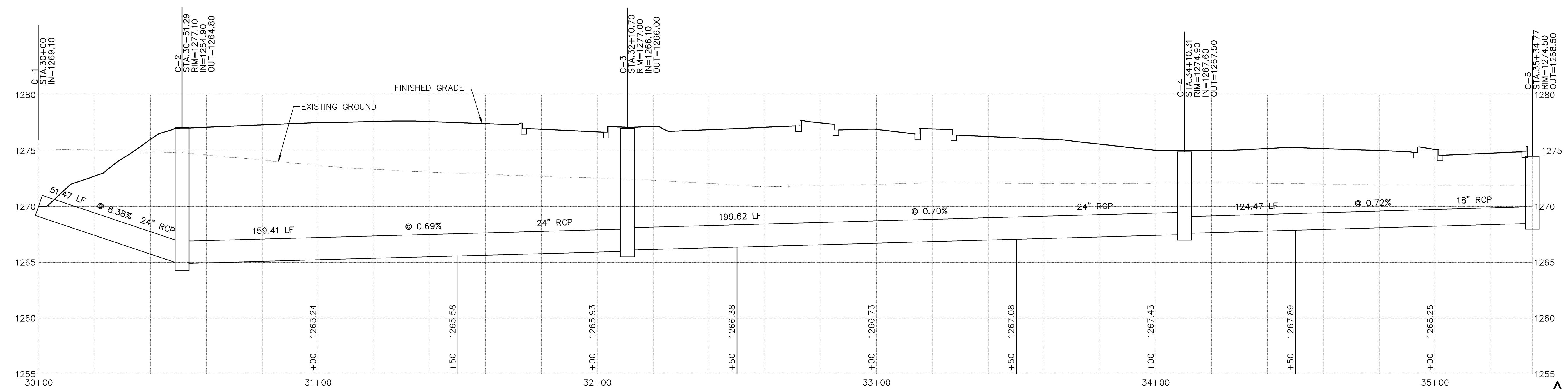
STORM SEWER LINE "D"

AS-BUILT

<b>KAW VALLEY ENGINEERING, INC. - CONSULTING ENGINEERS</b> Offices: Junction City, ks. Kansas City, Mo. Lenexa, ks.	
2319 NORTH JACKSON P.O. BOX 1304 JUNCTION CITY, KANSAS 66441 785-762-5040 FAX 785-762-7744 E-MAIL jcv@kveing.com WEB SITE www.kveing.com	
<b>THE HOME DEPOT ADDITION</b> 47TH STREET SOUTH & BROADWAY AVENUE WICHITA, KANSAS	
<b>STORM SEWER LINE "B" &amp; "D" - PLAN &amp; PROFILE</b>	
PROJ. NO.	A06_2806
DATE	AUG 2006
DESIGNER	SDM
DRAWN BY	JL
CFN	2806DPP
SHEET	4
REV	4
REV	3
REV	2
REV	1
REV	0
REV	4
REV	5
REV	6
REV	7
REV	8
REV	9
REV	10
REV	11
REV	12
REV	13
REV	14
REV	15
REV	16
REV	17
REV	18
REV	19
REV	20
REV	21
REV	22
REV	23
REV	24
REV	25
REV	26
REV	27
REV	28
REV	29
REV	30
REV	31
REV	32
REV	33
REV	34
REV	35
REV	36
REV	37
REV	38
REV	39
REV	40
REV	41
REV	42
REV	43
REV	44
REV	45
REV	46
REV	47
REV	48
REV	49
REV	50
REV	51
REV	52
REV	53
REV	54
REV	55
REV	56
REV	57
REV	58
REV	59
REV	60
REV	61
REV	62
REV	63
REV	64
REV	65
REV	66
REV	67
REV	68
REV	69
REV	70
REV	71
REV	72
REV	73
REV	74
REV	75
REV	76
REV	77
REV	78
REV	79
REV	80
REV	81
REV	82
REV	83
REV	84
REV	85
REV	86
REV	87
REV	88
REV	89
REV	90
REV	91
REV	92
REV	93
REV	94
REV	95
REV	96
REV	97
REV	98
REV	99
REV	100
REV	101
REV	102
REV	103
REV	104
REV	105
REV	106
REV	107
REV	108
REV	109
REV	110
REV	111
REV	112
REV	113
REV	114
REV	115
REV	116
REV	117
REV	118
REV	119
REV	120
REV	121
REV	122
REV	123
REV	124
REV	125
REV	126
REV	127
REV	128
REV	129
REV	130
REV	131
REV	132
REV	133
REV	134
REV	135
REV	136
REV	137
REV	138
REV	139
REV	140
REV	141
REV	142
REV	143
REV	144
REV	145
REV	146
REV	147
REV	148
REV	149
REV	150
REV	151
REV	152
REV	153
REV	154
REV	155
REV	156
REV	157
REV	158
REV	159
REV	160
REV	161
REV	162
REV	163
REV	164
REV	165
REV	166
REV	167
REV	168
REV	169
REV	170
REV	171
REV	172
REV	173
REV	174
REV	175
REV	176
REV	177
REV	178
REV	179
REV	180
REV	181
REV	182
REV	183
REV	184
REV	185
REV	186
REV	187
REV	188
REV	189
REV	190
REV	191
REV	192
REV	193
REV	194
REV	195
REV	196
REV	197
REV	198
REV	199
REV	200
REV	201
REV	202
REV	203
REV	204
REV	205
REV	206
REV	207
REV	208
REV	209
REV	210
REV	211
REV	212
REV	213
REV	214
REV	215
REV	216
REV	217
REV	218
REV	219
REV	220
REV	221
REV	222
REV	223
REV	224
REV	225
REV	226
REV	227
REV	228
REV	229
REV	230
REV	231
REV	232
REV	233
REV	234
REV	235
REV	236
REV	237
REV	238
REV	239
REV	240
REV	241
REV	242
REV	243
REV	244
REV	245
REV	246
REV	247
REV	248
REV	249
REV	250
REV	251
REV	252
REV	253
REV	254
REV	255
REV	256
REV	257
REV	258
REV	259
REV	260
REV	261
REV	262
REV	263
REV	264
REV	265
REV	266
REV	267
REV	268
REV	269
REV	270
REV	271
REV	272
REV	273
REV	274
REV	275
REV	276
REV	277
REV	278
REV	279
REV	280
REV	281
REV	282
REV	283
REV	284
REV	285
REV	286
REV	287
REV	288
REV	289
REV	290
REV	291
REV	292
REV	293
REV	294
REV	295
REV	296
REV	297
REV	298
REV	299
REV	300
REV	301
REV	302
REV	303
REV	304
REV	305
REV	306
REV	307
REV	308
REV	309
REV	310
REV	311
REV	312
REV	313
REV	314
REV	315
REV	316
REV	317
REV	318
REV	319
REV	320
REV	321
REV	322
REV	323
REV	324
REV	325
REV	326
REV	327
REV	328
REV	329
REV	330
REV	331
REV	332
REV	333
REV	334
REV	335
REV	336
REV	337
REV	338
REV	339
REV	340
REV	341
REV	342
REV	343
REV	344
REV	345
REV	346
REV	347
REV	348
REV	349
REV	350
REV	351
REV	352
REV	353
REV	354
REV	355
REV	356
REV	357
REV	358
REV	359
REV	360
REV	361
REV	362
REV	363
REV	364
REV	365
REV	366
REV	367
REV	368
REV	369
REV	370
REV	371
REV	372
REV	373
REV	374
REV	375
REV	376
REV	377
REV	378
REV	379
REV	380
REV	381
REV	382
REV	383
REV	384
REV	385
REV	386
REV	387
REV	388
REV	389
REV	390
REV	391
REV	392
REV	393
REV	394
REV	395
REV	396
REV	397
REV	398
REV	399
REV	400
REV	401
REV	402
REV	403
REV	404
REV	405
REV	406
REV	407
REV	408
REV	409
REV	410
REV	411
REV	412
REV	413
REV	414
REV	415
REV	416
REV	417
REV	418
REV	419
REV	420
REV	421
REV	422
REV	423
REV	424
REV	425
REV	426
REV	427
REV	428
REV	429
REV	430
REV	431
REV	432
REV	433
REV	434
REV	435
REV	436
REV	437
REV	438
REV	439
REV	440
REV	441
REV	442
REV	443
REV	444
REV	445
REV	446
REV	447
REV	448
REV	449
REV	450
REV	451
REV	452
REV	453
REV	454
REV	455
REV	456
REV	457
REV	458
REV	459
REV	460
REV	461
REV	462
REV	463
REV	464
REV	465
REV	466
REV	467
REV	468
REV	469
REV	470
REV	471
REV	472
REV	473
REV	474
REV	



ELEVATION DATUM REVISED TO M.S.L.



AS-BUILT

PROJ. NO.	A06 2806
DATE	AUG 2006
DESIGNER	SDM
DRAWN BY	JL
CFN	2806DPP
SHEET	7 OF 15

REV	DATE	DESCRIPTION
4	5-13-08	AS BUILT PLANS
3	2-1-08	REVISED PER ADDENDUM "A"
1	11-27-06	REVISED PER CITY
0	8-18-06	INITIAL ISSUE

**THE HOME DEPOT ADDITION**  
 47TH STREET SOUTH & BROADWAY AVENUE  
 WICHITA, KANSAS

**STORM SEWER LINE "C" - PLAN & PROFILE**

**KAW VALLEY ENGINEERING, INC.** - CONSULTING ENGINEERS  
 Offices: Junction City, ks, Kansas City, Mo., Lenexa, Ks.

2319 NORTH JACKSON  
 P.O. BOX 1304  
 JUNCTION CITY, KANSAS 66441  
 785-762-5040 FAX 785-762-7744  
 E-MAIL jc@kveing.com  
 WEB SITE www.kveing.com

Professional Engineer License No. 9772