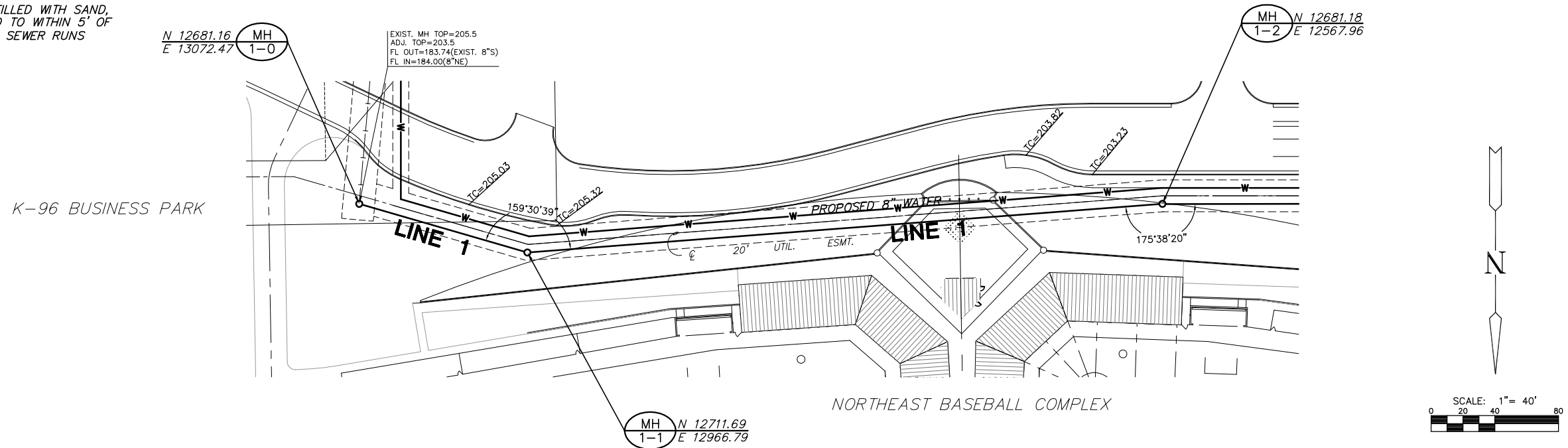


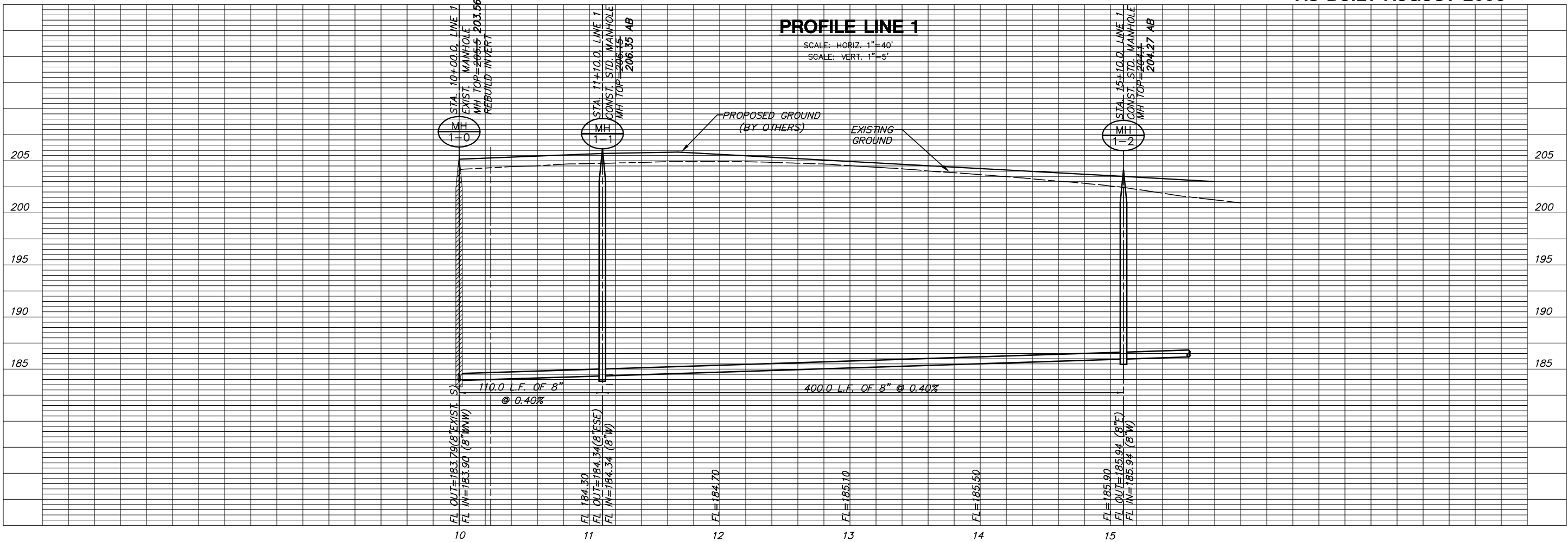
NOTES:

1. CONTRACTOR TO VERIFY THE DEPTH AND LOCATION OF EXISTING UTILITIES PRIOR TO CONSTRUCTION.
2. TRENCHES TO BE BACKFILLED WITH SAND, FLUSHED, AND VIBRATED TO WITHIN 5' OF FINISHED GROUND WHEN SEWER RUNS UNDER PARKING LOT.



PLAN LINE 1
SCALE: 1"=40'

AS-BUILT AUGUST 2008



PROFILE LINE 1
SCALE: HORIZ. 1"=40'
SCALE: VERT. 1"=5'

**SANITARY SEWER PLANS FOR
NORTHEAST BASEBALL COMPLEX**

SANITARY SEWER
SHEET TITLE
1790PPS
PROJECT NUMBER

JTC | DDG | GJA
DESIGNED | DRAWN | CHECKED

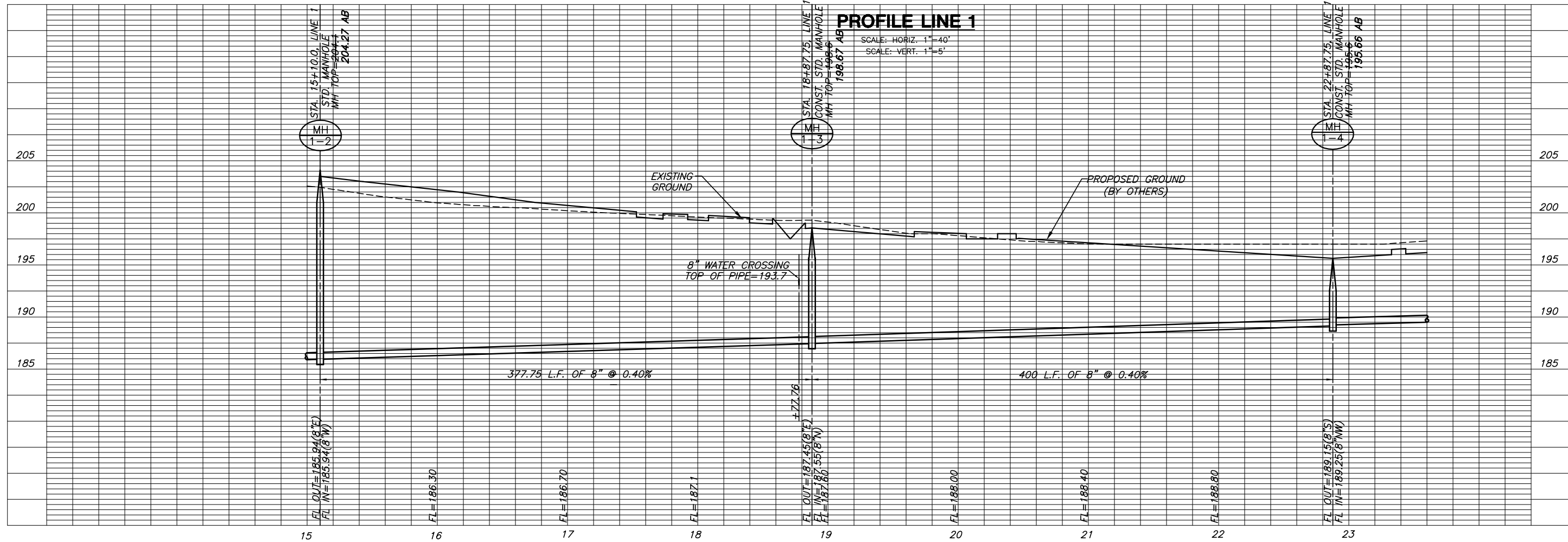
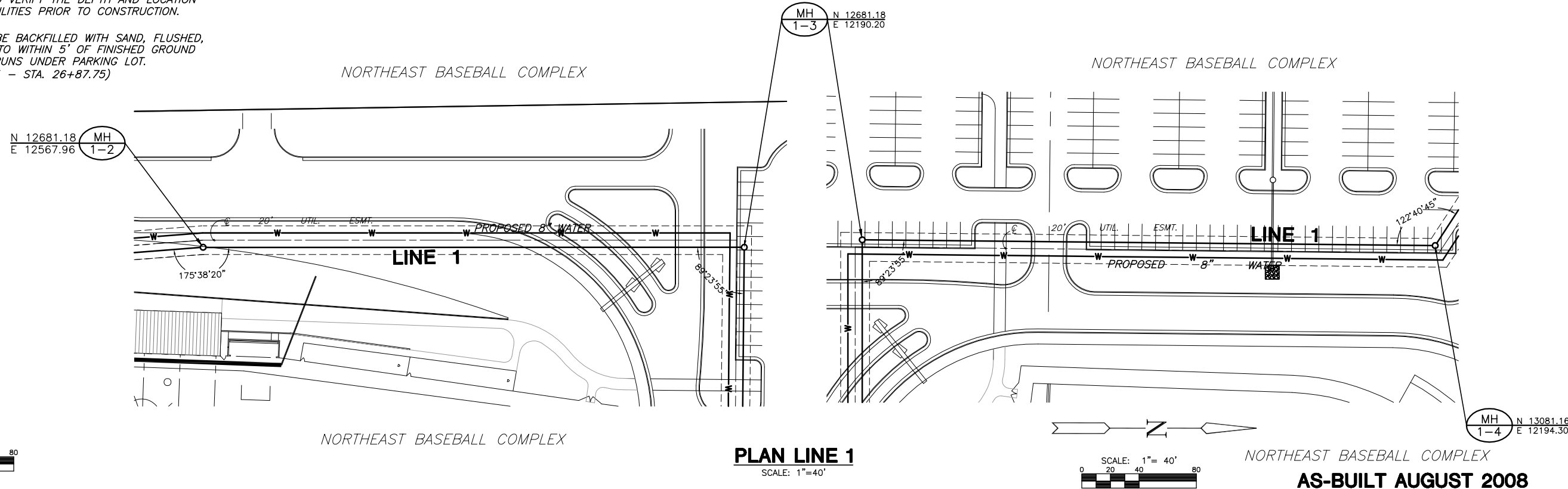
ISSUED
August 2007
REVISED
November 2007

PLOTTED: Thursday, August 07, 2008 @ 04:02PM

J:\Civil\06403_NE Baseball\vwg\SAN\AS-BUILT\06403B1a.dwg

NOTES:

1. CONTRACTOR TO VERIFY THE DEPTH AND LOCATION OF EXISTING UTILITIES PRIOR TO CONSTRUCTION.
2. TRENCHES TO BE BACKFILLED WITH SAND, FLUSHED, AND VIBRATED TO WITHIN 5" OF FINISHED GROUND WHEN SEWER RUNS UNDER PARKING LOT. (STA. 18+80.25 - STA. 26+87.75)



**SANITARY SEWER PLANS FOR
NORTHEAST BASEBALL COMPLEX**

SANITARY SEWER
SHEET TITLE
1790PPS
PROJECT NUMBER

JTC | DDG | GJA
DESIGNED | DRAWN | CHECKED

ISSUED
August 2007
REVISED
November 2007

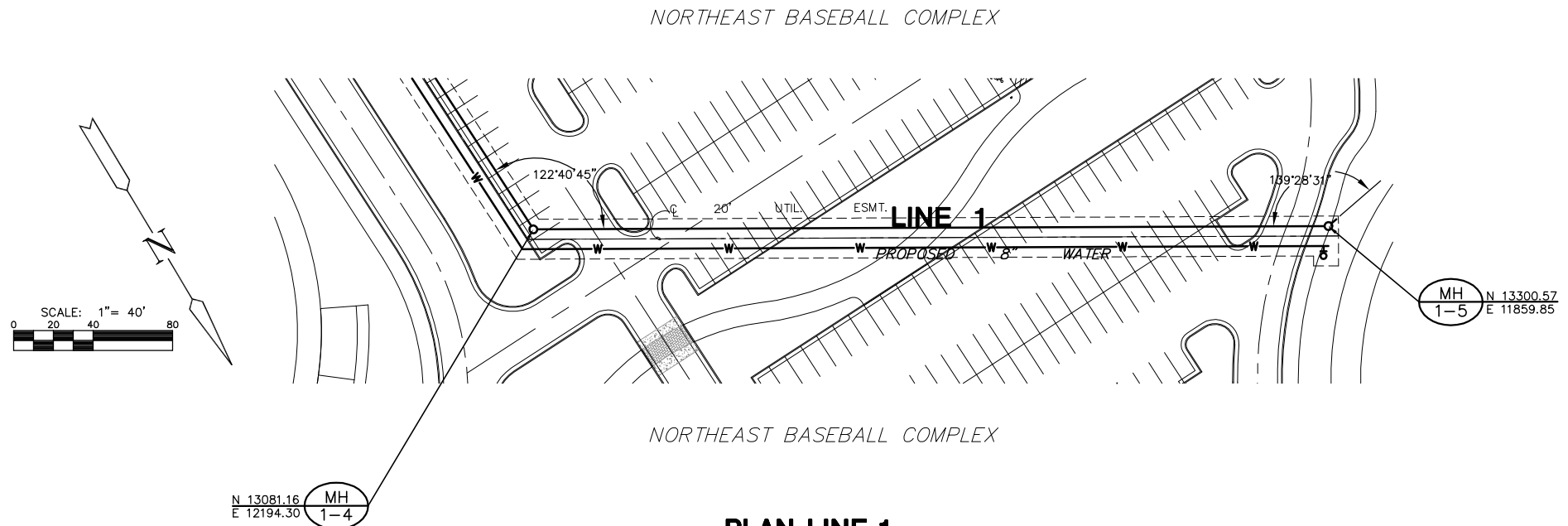
PLOTTED: Thursday, August 07, 2008 @ 04:05PM

J:\CIVIL\06403_NE_BASEBALL\DWG\SAN_AS-BUILT\06403B2A.DWG

**SANITARY SEWER PLANS FOR
NORTHEAST BASEBALL COMPLEX**

NOTES:

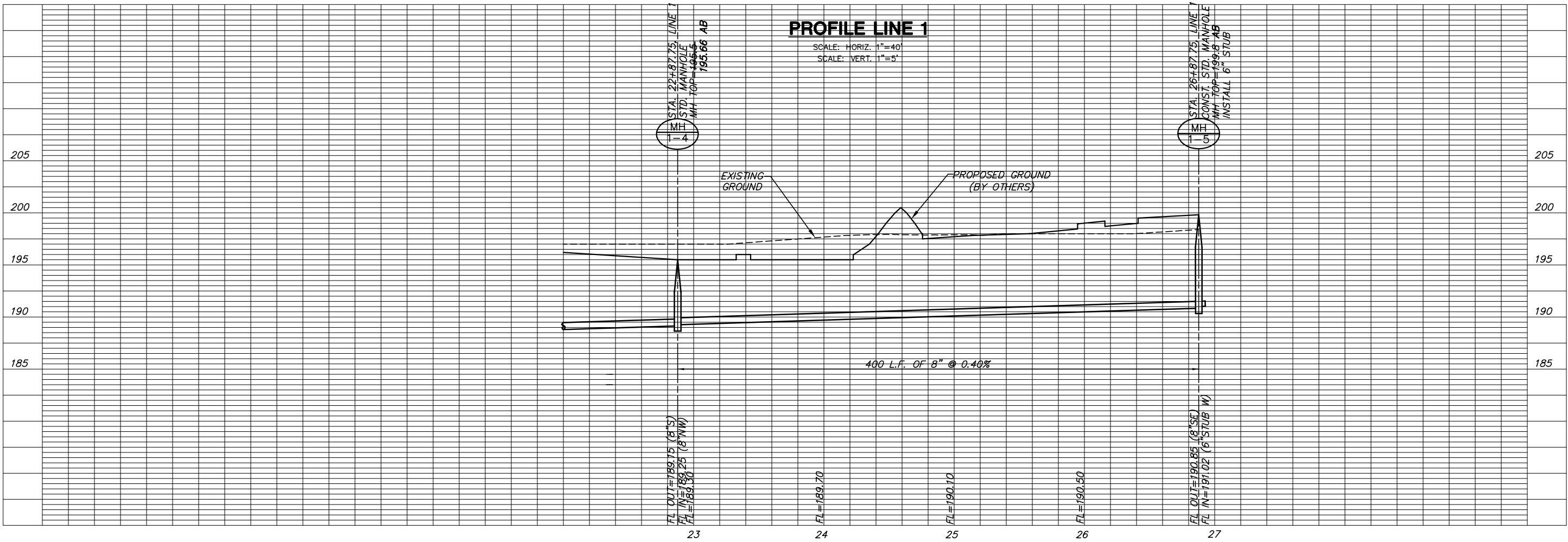
1. CONTRACTOR TO VERIFY THE DEPTH AND LOCATION OF EXISTING UTILITIES PRIOR TO CONSTRUCTION.
2. TRENCHES TO BE BACKFILLED WITH SAND, FLUSHED, AND VIBRATED TO WITHIN 5' OF FINISHED GROUND WHEN SEWER RUNS UNDER PARKING LOT. (STA. 18+80.25 - STA. 26+87.75)



PLAN LINE 1

SCALE: 1"=40'

AS-BUILT AUGUST 2008



PROFILE LINE 1

SCALE: HORIZ. 1"=40'
SCALE: VERT. 1"=5'

SANITARY SEWER
SHEET TITLE
1790PPS
PROJECT NUMBER

JTC | DDG | GJA
DESIGNED | DRAWN | CHECKED

ISSUED
August 2007
REVISED
November 2007

SHEET NO.
5 OF 6