

# PRIVATE SANITARY SEWER

TO SERVE

## CESSNA AIRCRAFT COMPANY

## C6 BUILDING EXPANSION

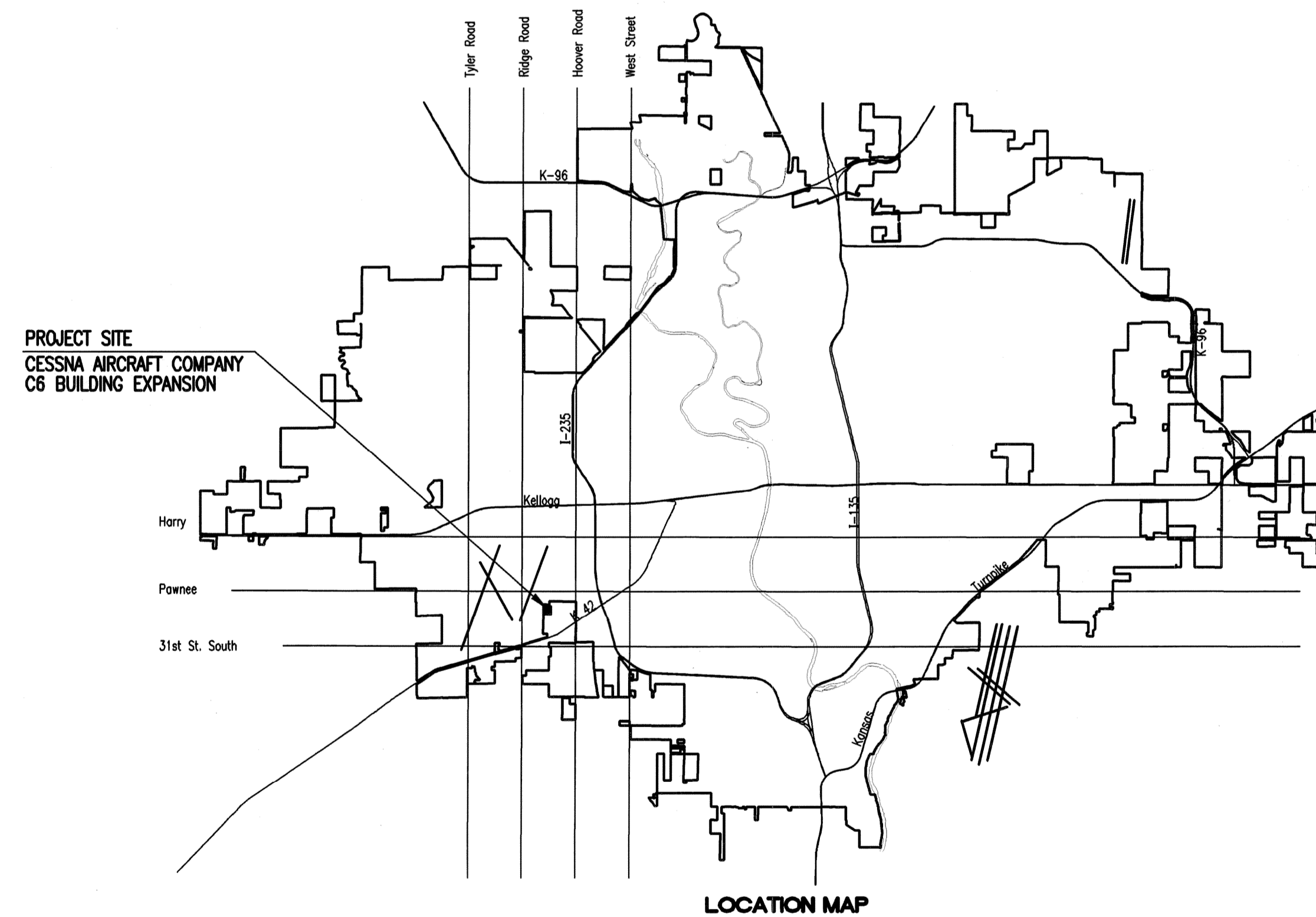
PRIVATE PROJECT NO. 1840 PPS (607861)

## CITY OF WICHITA, KANSAS

JAMES L. ARMOUR, P.E. - CITY ENGINEER

INDEX OF SHEETS

SHEET NO. C2.1	TITLE SHEET
SHEET NO. C2.2	KEY MAP AND GENERAL NOTES
SHEET NO. C2.3	PLAN/PROFILE
SHEET NO. C2.4	STANDARD TYPE 'P' MANHOLES
SHEET NO. C2.5	MANHOLE FRAME AND COVER
SHEET NO. C3.1-C3.3	SOIL EROSION BMP DETAILS



Released: 9/8/08

jdl

**As Built Plans:**

CONTRACTOR: McCullough Excavation  
 INSPECTORS: Larry Gann, K E Miller Engineering  
 Tom Jones, K E Miller Engineering  
 .PDF by: NWS, 09-03-08

APPROVED AS NOTED  
 By CITY ENGINEER OF WICHITA

Sanitary Sewers VRH 2/27/08

Storm Sewers \_\_\_\_\_

Driveway Approaches \_\_\_\_\_

Paving \_\_\_\_\_

NOTE TO CONTRACTOR

INSPECTION AND TESTING FOR THIS PROJECT IS TO BE PROVIDED BY A LICENSED CONSULTING ENGINEERING FIRM CONTRACTED BY THE OWNER/DEVELOPER. SAID INSPECTION TO BE IN ACCORDANCE WITH THE CITY OF WICHITA STANDARD CONSTRUCTION ENGINEERING PRACTICES AND CERTIFIED BY A LICENSED PROFESSIONAL ENGINEER. NO WORK SHALL BE PERFORMED IN DEDICATED EASEMENTS OR PUBLIC RIGHT-OF-WAY BY THE CONTRACTOR UNTIL SUCH INSPECTION IS ARRANGED FOR AND REQUIRED BONDS HAVE BEEN SUBMITTED TO AND APPROVED BY THE CITY NOR SHALL ANY WORK BE COMMENCED IN DEDICATED EASEMENTS OR PUBLIC RIGHT-OF-WAY WITHOUT WRITTEN AUTHORIZATION BY THE CITY ENGINEER. IMPROVEMENTS PERFORMED UNDER THIS PROJECT SHALL NOT BE ACCEPTED BY THE CITY UNTIL ALL APPLICABLE DOCUMENTATION HAS BEEN SUBMITTED TO THE CITY ENGINEER. THIS MAY INCLUDE: RECORD DRAWINGS, INSPECTION LOGS, TEST DOCUMENTATION, TV TAPES, AND A CERTIFICATE OF COMPLETION. THE ABOVE SHALL BE PERFORMED BY THE CONSULTING FIRM CONTRACTED TO INSPECT THIS PROJECT.

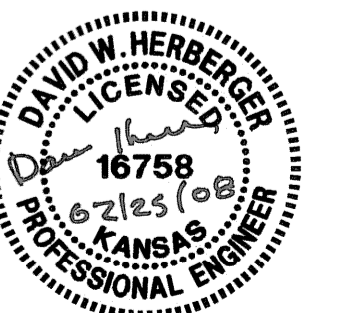
# FEBRUARY 2008

PLANS PREPARED BY

## PROFESSIONAL ENGINEERING CONSULTANTS, P.A.

ENGINEERS

WICHITA, KANSAS



GENERAL NOTES

- ALL CONSTRUCTION AND MATERIALS TO COMPLY WITH CITY OF WICHITA SPECIFICATIONS AND STANDARDS.
- ALL ELEVATIONS SHOWN ARE BASED ON USGS DATUM.
- AT LEAST 72 HOURS PRIOR TO BEGINNING EXCAVATION (EXCLUDING WEEKENDS AND HOLIDAYS), THE CONTRACTOR SHALL CONTACT THE KANSAS ONE-CALL SYSTEM, A UTILITY LOCATION SERVICE, AT (316) 687-2470 TO REQUEST THE LOCAL UTILITY COMPANIES MARK ANY EXISTING LINES WITHIN THE PROJECT AREA.
- UNDERGROUND UTILITY SERVICE LINES AND OVERHEAD UTILITY POLE LINES ARE TO BE ADJUSTED AS NECESSARY BY OTHERS PRIOR TO CONSTRUCTION UNLESS THE PLANS SPECIFICALLY CALL FOR THEIR ADJUSTMENT BY THE CONTRACTOR OR UNLESS THE PLANS SPECIFICALLY IDENTIFY A UTILITY TO BE ADJUSTED BY ITS OWNER DURING CONSTRUCTION. EXISTING UTILITIES AND THEIR LOCATIONS, AS SHOWN ON THE PLANS, REPRESENT THE BEST INFORMATION OBTAINABLE FOR THE DESIGN. THE CONTRACTOR WILL BE REQUIRED TO WORK AROUND EXISTING UTILITIES WITHIN THE RIGHT-OF-WAY WHICH DO NOT CONFLICT WITH PROPOSED CONSTRUCTION.
- THE CONTRACTOR SHALL BE RESPONSIBLE FOR PRESERVING PROPERTY IRONS. THE CONTRACTOR WILL BE REQUIRED TO RE-ESTABLISH ANY PROPERTY IRONS WHICH ARE DAMAGED OR DESTROYED BY HIS CONSTRUCTION OPERATIONS. SUCH IRONS SHALL BE RE-ESTABLISHED BY A LICENSED LAND SURVEYOR IN ACCORDANCE WITH STATE LAWS.
- RUBBLE FROM THE REMOVAL OF MISCELLANEOUS STRUCTURES INCLUDING ANY TREES REMOVED, TREE TRIMMINGS, AND EXCESS EXCAVATION WHICH IS TO BE WASTED SHALL BE DISPOSED OF ON SITES PROVIDED BY THE CONTRACTOR. THESE SITES SHALL ALSO BE APPROVED BY THE ENGINEER AS TO SUITABILITY, APPEARANCE, AND SITE LOCATION. LOCATIONS THAT, IN THE OPINION OF THE ENGINEER, WILL LEAVE AN UNSIGHTLY APPEARANCE WILL NOT BE APPROVED. ALL DISPOSAL SITES MUST BE APPROVED BY THE KANSAS DEPARTMENT OF HEALTH AND ENVIRONMENT. MATERIAL EITHER STOCKPILED OR DISPOSED OF IN A FLOOD PLAIN WILL REQUIRE A KANSAS STATE BOARD OF AGRICULTURE PERMIT. ANY MATERIAL DUMPED IN WATERS OF THE UNITED STATES OR WETLANDS IS SUBJECT TO U.S. CORPS. OF ENGINEERS PERMITTING REGULATIONS. ANY MATERIAL BURIED OR STOCKPILED BEYOND APPROVED CONSTRUCTION LIMITS MAY REQUIRE ARCHAEOLOGICAL INVESTIGATIONS UNLESS BURIED IN A PREVIOUSLY APPROVED DISPOSAL LOCATION.
- THE CONTRACTOR SHALL PREVENT ANY CONSTRUCTION DEBRIS FROM ENTERING THE EXISTING SEWER SYSTEM DURING CONSTRUCTION.
- ALL APPROVED EXCESS EXCAVATION WHICH IS TO BE WASTED SHALL BE HAULED OFF-SITE AT NO ADDITIONAL COST TO THE OWNER.
- CONTRACTOR IS REQUIRED TO MAINTAIN CONTINUOUS FLOW IN EXISTING SEWER MAINS AT ALL TIMES.
- ALL MANHOLE AND INLET TOPS SHALL BE ADJUSTED TO BE FLUSH WITH FINAL PAVEMENT GRADES.
- FOR THIS PROJECT, ALL SEWER LINE EXCAVATION IN PROPOSED OR EXISTING PAVED AREAS SHALL BE SAND FILLED AND FLUSHED (JETTED AND VIBRATED) WITH WATER PER THE REQUIREMENTS LISTED IN THE STANDARD SPECIFICATIONS FOR THE CITY OF WICHITA, UNLESS FLOWABLE FILL OR OTHER IMPROVED BACKFILL MATERIAL IS OTHERWISE SPECIFIED.

SCALE: 1" = 60'

LEGEND

- EXISTING SANITARY SEWER
- PROPOSED SANITARY SEWER
- EXISTING SANITARY SEWER w/ MANHOLE
- PROPOSED SANITARY SEWER w/ MANHOLE

CONTROL POINTS:

- N-1,671,896.4893, E-1,625,863.1874  
 C.P. #208 - Pk Nail Near NW Parking Lot for "Annex 4"
- To NE Corner of Concrete Sidewalk 21.84' S
  - To Center of Corner Fence Post 42.78' NW
  - To N-S Chain Link Fence 31.64' W

- N-1,671,264.6576, E-1,625,655.7434  
 C.P. #209 - #4 Rebar
- To Chiseled "+" on SW Corner Area Inlet 20.52' N
  - To Center Bolt on W Side of PIV Water Valve 48.85' NW
  - To Chiseled "+" on Concrete Base for Light Pole 41.20' WSW
  - To N Side of Cessna Drive 17.0' S

- N-1,671,311.8866, E-1,625,253.6692  
 C.P. #210 - #4 Rebar, SSW of Building C6
- To Chiseled "+" on SW Corner of Telephone Vault 15.70' E
  - To Chiseled "+" on NE Corner of Area Inlet 27.26' SSW
  - To SE Corner of Wrought Iron Fence 42.28' SW

- N-1,671,815.0810, E-1,625,632.6864  
 C.P. #211 - Chiseled "+" on Concrete Parking Area on E Side of C6
- To Top Center of Fire Hydrant 9.7' E
  - To E Edge of Concrete 3.0' E
  - To N Face of Building Extended 2.2' N
  - To Chiseled "+" at NE Corner of Concrete Parking 117.12' N

- N-1,671,932.1984, E-1,625,632.3185  
 C.P. #212 - Chiseled "+" on Concrete Parking Area on E Side of C6
- To N Edge of Concrete 3.0' W
  - To E Edge of Concrete 3.0' E
  - To Chiseled "+" on Concrete 117.12' S

- N-1,671,930.9884, E-1,625,215.4230  
 C.P. #213 - Chiseled "+" on Concrete Parking Area NW of NW Corner of C6

- N-1,671,229.6094, E-1,625,060.2370  
 C.P. #214 - Aluminum Disc
- To Wrought Iron Fence Corner at W End of Cessna Dr. 107.61' NE
  - To N-S Wrought Iron Fence 64.61' E
  - To W Corner of Building Column 205.15' SSE
  - To 8" Cedar Tree 20.0' ESE

- N-1,671,214.4587, E-1,625,887.8568  
 C.P. #7265 - #4 Rebar
- To NW Corner of Wrought Iron Fence 28.11' E
  - To Back of Curb Near NE Corner of Parking Lot 4.7' NW
  - To Centerline of Cessna Drive 20.0' N
  - To SW Corner of "Annex 4" Building 122.81' NNE

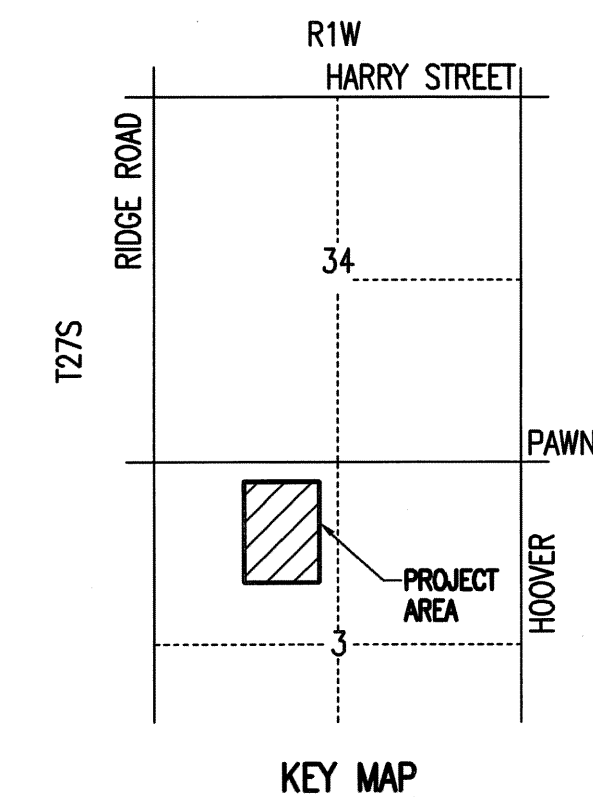
BENCHMARKS: BM

BM#A CHISELED SQUARE ON SOUTH END OF EAST HEADWALL OF RCB, 20 FEET SOUTH OF PANNEE (GRAVEL ROAD), 2640 FEET WEST OF HOOVER ROAD, 230 FEET WEST OF A NORTH-SOUTH ASPHALT ROAD THAT GOES TO THE CESSNA SERVICE CENTER.

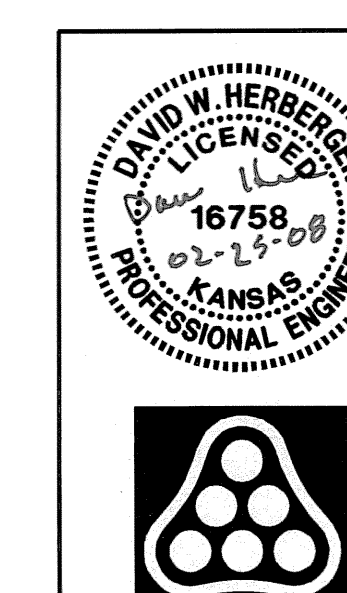
ELEVATION: 1305.925

BM#H CHISELED CROSS ON SOUTHWEST CORNER OF TELEPHONE VAULT, 170 FEET SOUTH OF SOUTHWEST CORNER OF BUILDING C-6, AND 90 FEET NORTH OF CESSNA PLANT ACCESS ROAD, 3400 FEET WEST OF HOOVER ROAD.

ELEVATION: 1312.485

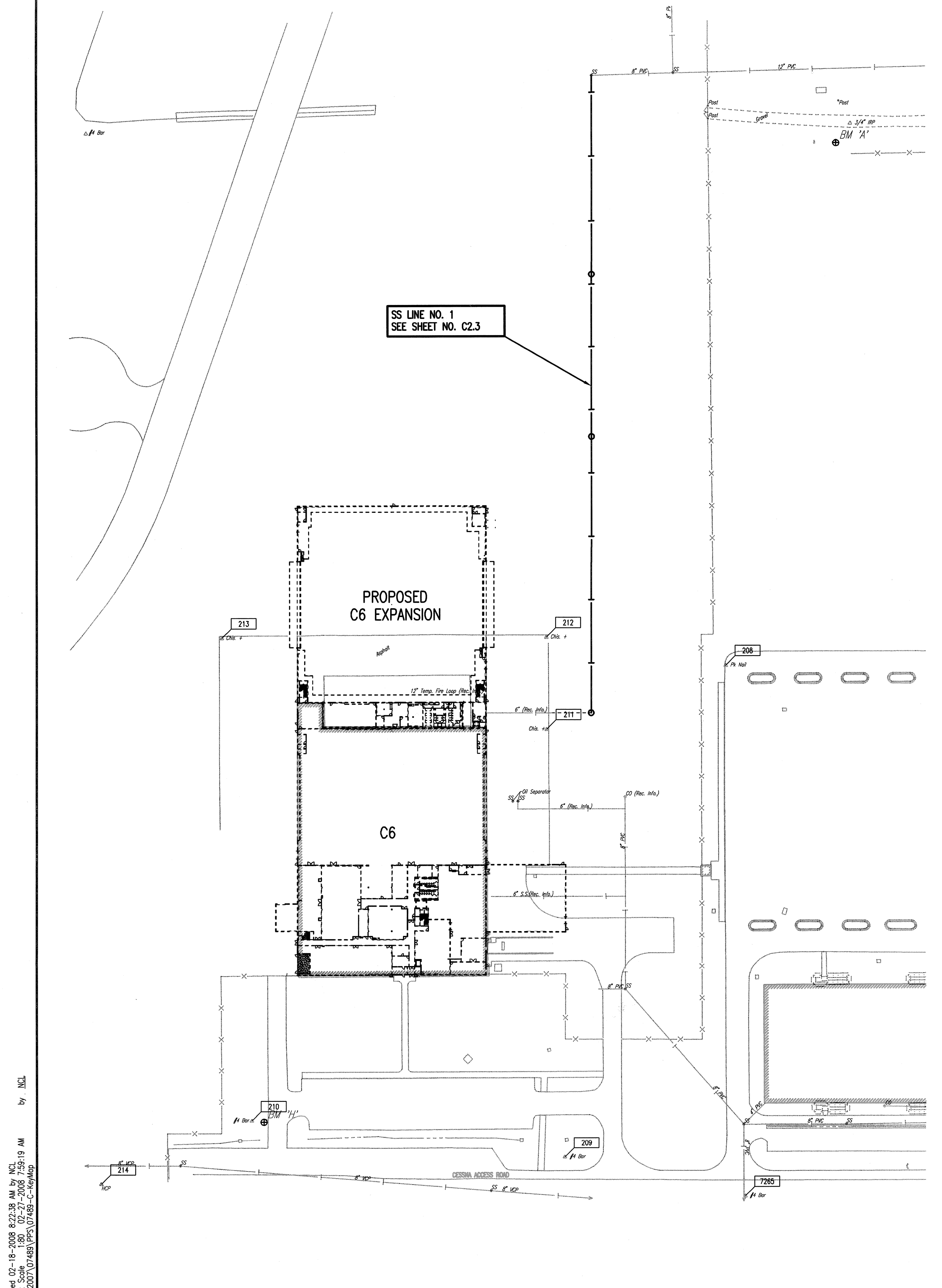


KEY MAP



No.	Revision	By	Date
PRIVATE SANITARY SEWER CESSNA AIRCRAFT COMPANY C6 BUILDING EXPANSION <b>KEY MAP AND GENERAL NOTES</b> JAMES L. ARMOUR, P.E. - CITY ENGINEER PRIVATE PROJECT NO. 1840 PPS (607861) <b>Professional Engineering Consultants, P.A.</b> 303 S. TOPEKA • WICHITA, KANSAS 67202 316-262-2691 • FAX 316-262-3003			
Designed by	DWH	Job No.	35-07489-2474
Drawn by	NCL	Date	FEBRUARY 2008
			Sht. C2.2 of 8

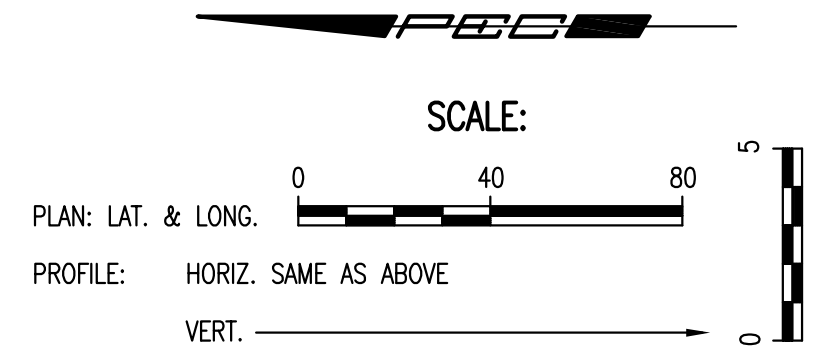
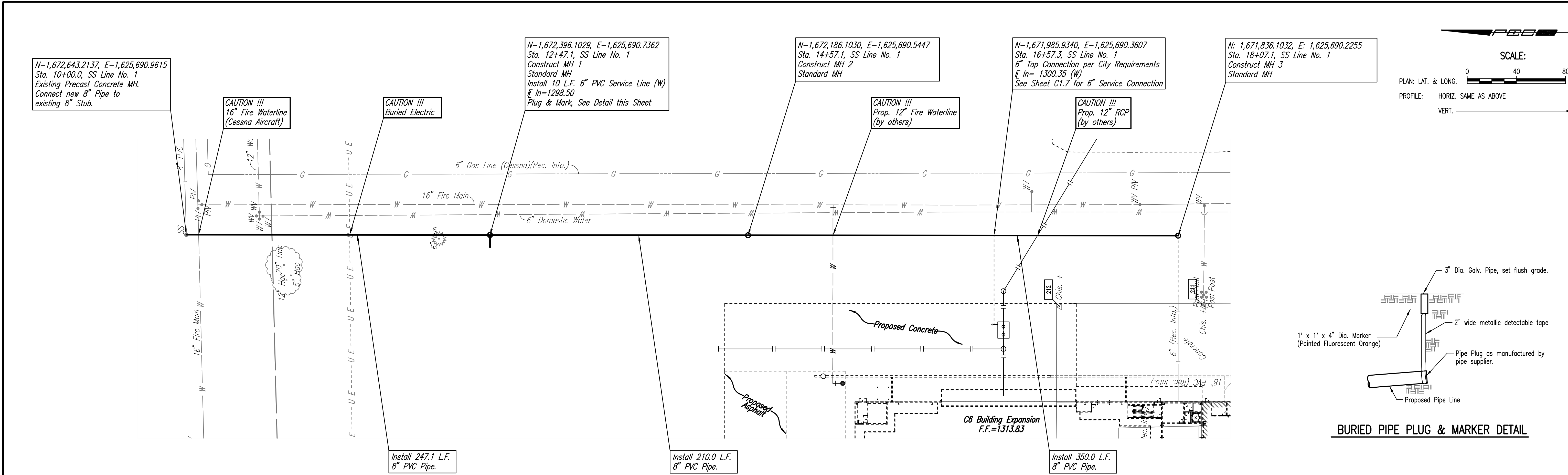
Saved: 02-18-2008 8:23:38 AM by NCL  
 Plot Scale: 1:80 (02-17-2008 7:59:19 AM)  
 C:\2007\07489\PPS\07489-C-K6.mxd



PLAN	CHECKED	DATE
	CHECKED	

PROFILE	CHECKED	DATE
	CHECKED	

Sowed 02-27-2008 8:54:04 AM by NCL  
 Plot Scale 1:40 03-06-2008 4:46:25 PM by NCL  
 02/2007/07489/PPS/07489-C-PP5301



SANITARY SEWER LINE NO. 1



PRIVATE SANITARY SEWER  
 CESSNA AIRCRAFT COMPANY  
 C6 BUILDING EXPANSION  
**SANITARY SEWER LINE NO. 1**  
 JAMES L. ARMOUR, P.E. - CITY ENGINEER  
 PRIVATE PROJECT NO. 1840 PPS (607861)

---

Professional Engineering Consultants, P.A.  
 303 S. TORRENS AVENUE, SUITE 202  
 316-262-2091 • FAX 316-262-3003

---

Designed by DWH  
 Drawn by NCL

---

Job No. 35-07489-2474  
 Date FEBRUARY 2008

---

Sheet C2.3 of 8