

# LATERAL 18, DISTRICT D, S.S. No. 12

Lot 1, Block 1, Hunter Health Clinic 2nd Addition

Project No. 468-84350

O.C.A. No. 744270

## INDEX OF SHEETS

1. TITLE SHEET
2. SANITARY LINE 1, 2
3. PLAN/PROFILE TYPE 'P' MANHOLE DETAILS
4. MANHOLE LID DETAILS
- 5-9. BMPs
9. FINAL PLAT (FOR REFERENCE ONLY)

## BENCH MARKS

B.M.: SQUARE CUT TOP OF CURB, S. CURB RETURN AT N.E. CORNER OF CENTRAL & SPRUCE ELEV. = 1301.95 NGVD 29

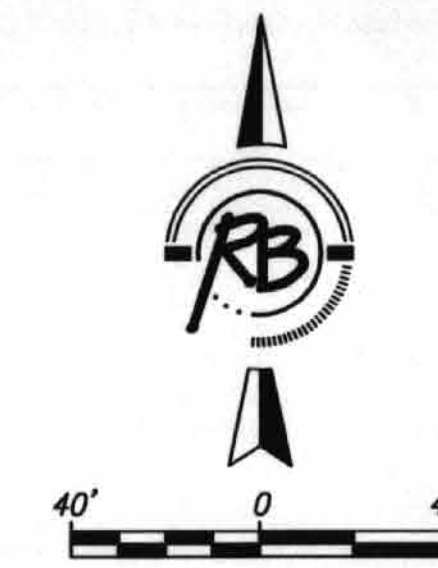
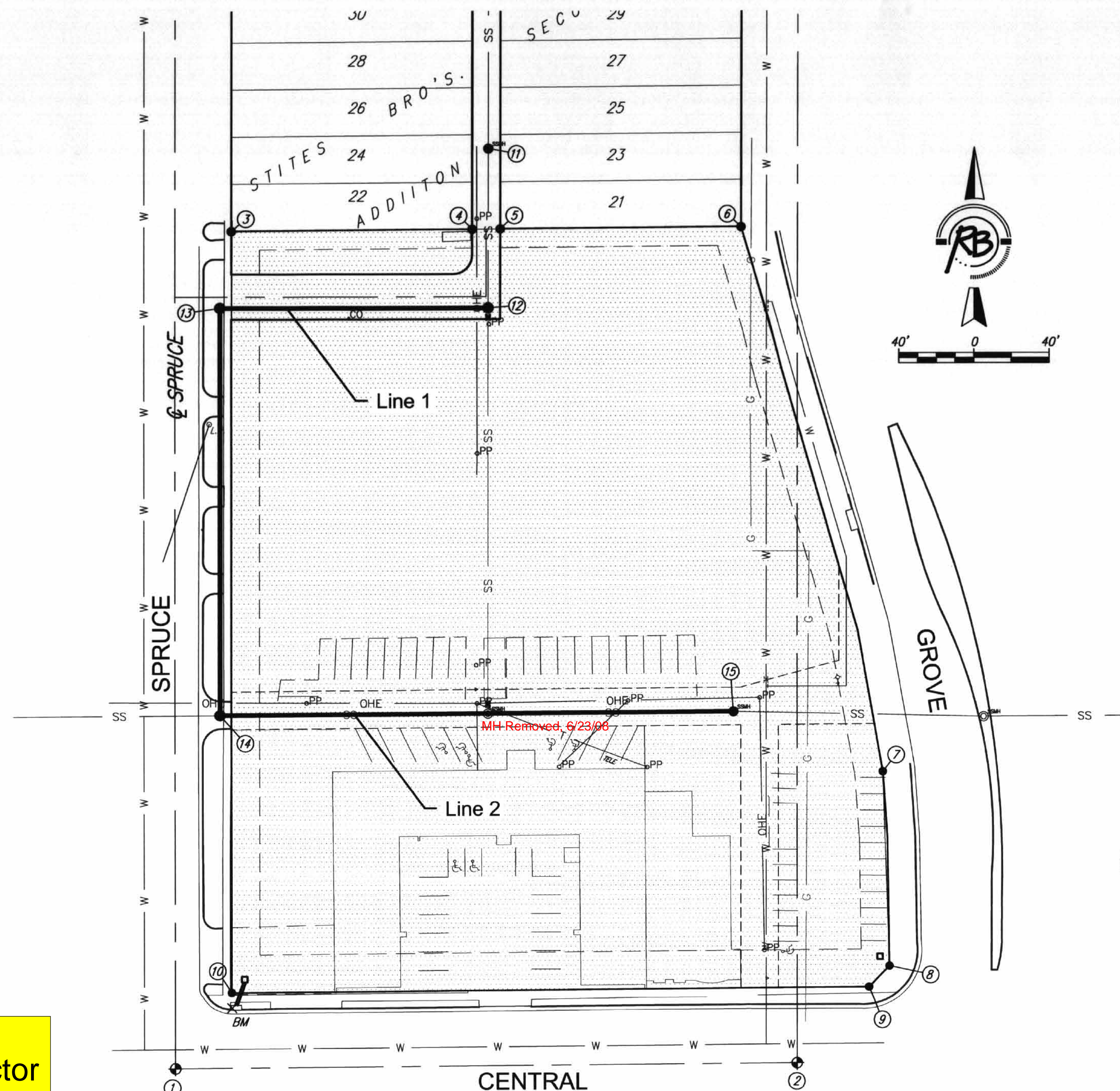
## GENERAL NOTES

1. Contractor will be required to provide a minimum advance notice of forty-eight (48) hours to utility companies prior to starting any excavation as follows:  
  

Kansas One-Call	687-2470
-----------------	----------

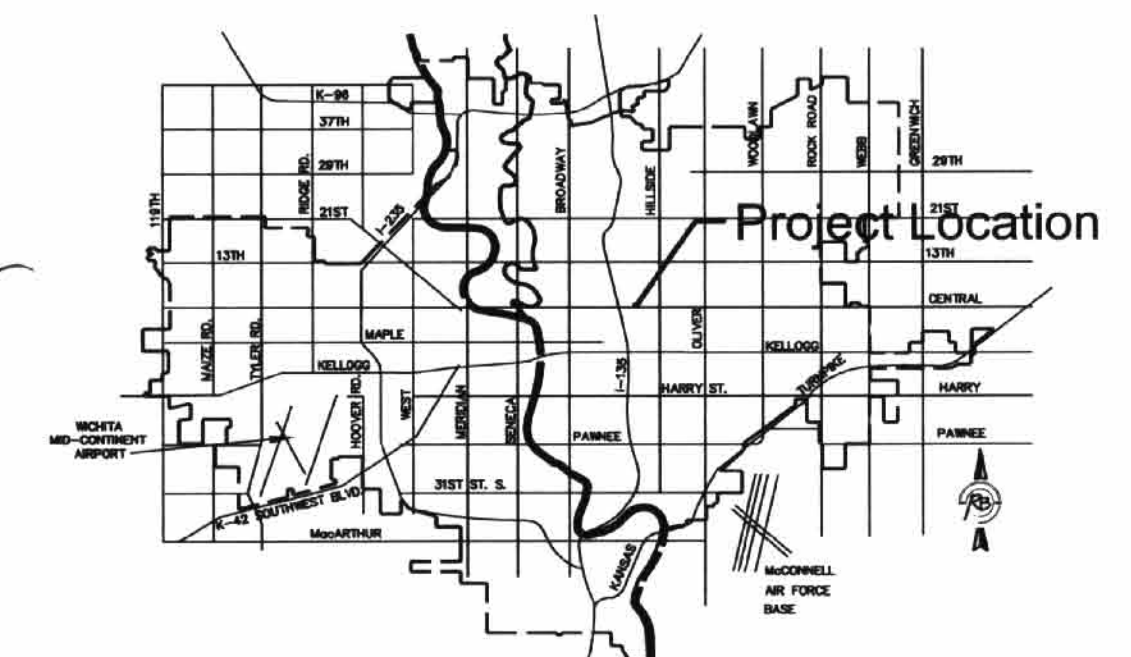
The Contractor must notify the following in case of an emergency:

Cox Communications	262-0661
Kansas Gas Service	1-888-482-4950
Westar	383-8600
Aquila Energy	1-800-303-0357
AT&T	268-2245
City of Wichita Water Department	262-6000
City of Wichita Sewer Maintenance	262-6000
2. Existing utilities and their location, as shown on the plans, represent the best information obtainable for design. Location information has been obtained from the various utility companies and is either from company record drawings or company-provided field locations. The Contractor will be required to work around existing utilities within the right-of-way which do not conflict with proposed construction.
3. This project is to be constructed in accordance with City of Wichita Standard Specifications for the Construction of City Projects, and Policy on Construction of Public Works Improvements by Private Contract.
4. No work shall begin on this project before required bonds are submitted to the City of Wichita, and the project inspector has been notified.
5. The Contractor shall give all property owners and/or tenants of developed property directly abutting the construction of this project a minimum of ten (10) days advance notice prior to start of construction.
6. All areas of public R/W disturbed by construction of this project are to be restored in accordance with Administrative Regulation AR6.5 of the City of Wichita.
7. Sewage flow in the existing sanitary sewer shall be maintained at all times. The Contractor's plan for maintaining flow shall be submitted and approved by the Engineer prior to beginning work on the project.
8. Traffic will not be affected by this project.
9. Sidewalk removed by Contractor, to be replaced by others.



## COORDINATE CONTROL TABLE

CONTROL NO.	DESCRIPTION	NORTHING	EASTING
①	THIMBLE FOUND AT INTERSECTION OF CENTRAL AND SPRUCE.	20000.00	20000.00
②	THIMBLE FOUND AT INTERSECTION OF CENTRAL AND OLD GROVE CENTERLINE.	20002.59	20330.58
③	PROPERTY CORNER	20445.21	20030.00
④	PROPERTY CORNER	20446.24	20158.00
⑤	PROPERTY CORNER	20446.36	20173.00
⑥	PROPERTY CORNER	20447.38	20301.00
⑦	PROPERTY CORNER	20157.46	20376.25
⑧	PROPERTY CORNER	20053.98	20379.62
⑨	PROPERTY CORNER	20042.89	20368.77
⑩	PROPERTY CORNER	20040.24	20030.00
⑪	EXISTING SS MH	20489.07	20166.61
⑫	STA. 3+59.23, SANITARY LINE 1	20404.41	20166.55
⑬	STA. 2+16.69, SANITARY LINE 1	20404.41	20024.00
⑭	STA. 0+00.00, SANITARY LINE 1	20187.74	20024.00
⑮	STA. 2+72.83, SANITARY LINE 2	20189.52	20296.83



## VICINITY MAP (NOT TO SCALE)

WB Carter - Contractor  
 Michael Kavan - City of Wichita, Inspector  
 Released: June 23, 2008  
 As-Built  
 pdf by APR Sept. 12, 2008

IMPROVEMENT DISTRICT

CITY OF WICHITA, KANSAS  
 JAMES ARMOUR, P.E. - CITY ENGINEER

Ruggles & Bohm, P.A.  
 Engineering, Surveying, Land Planning  
 924 North Main (316) 264-8006  
 Wichita, Kansas 67203 (316) 264-4621 fax  
 www.rbvks.com E-mail: info@rvks.com  
 Apr. 21, 2008 3175E