

BENCHMARKS:
 135th St. W. & 13th St. N. - City of Wichita Disc at Southwest Corner of Intersection, 30.00'± S. of CL of 13th St. N. 35.00'± W. of CL of 135th St. W.
 Elev. = 1355.65 MSL

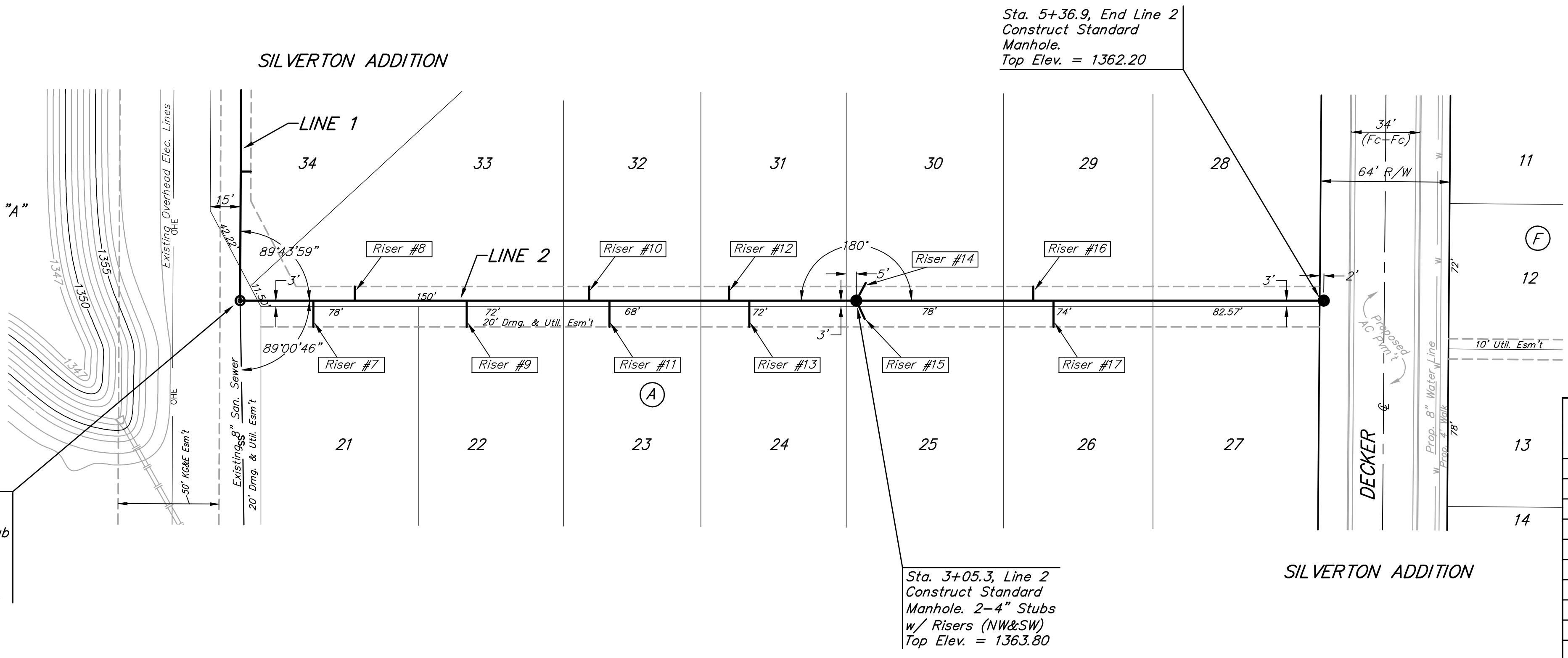
"□" Cut in Top of Curb 10' South of end of Existing Pavement, East Curb adjacent to Lot 12, Block D, Copper Gate North Addition.
 Elev. = 1362.13 MSL

BM Disc in top Curb Adjacent to Fire Hydrant at E. End of N. Curb Return of Kiwi & Decker, adjacent to Lot 16, Block D, Copper Gate North Addition.
 Elev. = 1361.04 MSL

EXISTING POND
 STATIC POOL ELEVATION: 1356.8 MSL
 BOTTOM ELEVATION: 1347.0 MSL
 100 YEAR DESIGN WATER SURFACE: 1358.9 MSL

Sta. 0+00, Begin Line 2 = Sta. 0+00, Line 1
 Connect to Existing 8" Stub and Extend 8" Pipe South. Contractor to Verify Depth and Location of Existing Stub Prior to Construction.

RESERVE "A"



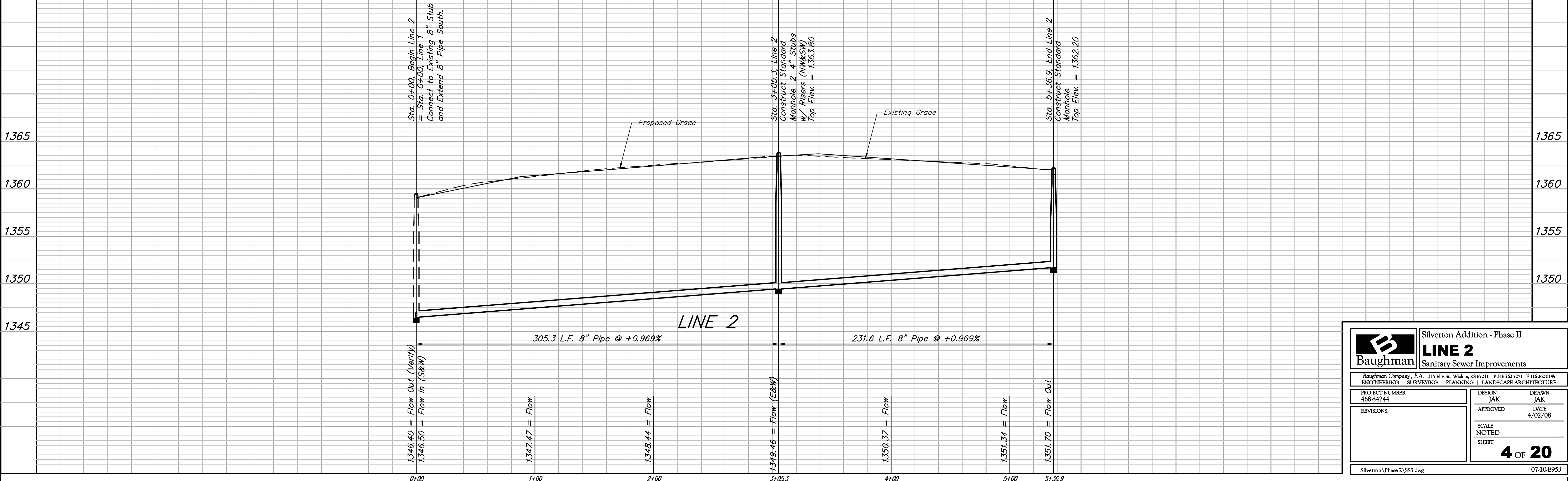
Sta. 5+36.9, End Line 2
 Construct Standard Manhole.
 Top Elev. = 1362.20

Sta. 3+05.3, Line 2
 Construct Standard Manhole. 2-4" Stubs w/ Risers (NW&SW)
 Top Elev. = 1363.80

SCALE:
 1" = 40' HORIZONTAL
 1" = 5' VERTICAL
 • = IRON

NUMBER	TYPE	LOCATION				FOR INFORMATION ONLY	
		LOT NO.	BLOCK NO.	LINE NO.	STATION/DIRECTION	APPROXIMATE LENGTH 4" PIPE VERTICAL	HORIZONTAL
7	8" X 4" Tee	21	A	2	0+36/Rt.	8'	13'
8	8" X 4" Tee	33	A	2	0+56/Lt.	8.5'	7'
9	8" X 4" Tee	22	A	2	1+12/Rt.	9'	13'
10	8" X 4" Tee	32	A	2	1+73/Lt.	9'	7'
11	8" X 4" Tee	23	A	2	1+83/Rt.	9'	13'
12	8" X 4" Tee	31	A	2	2+43/Lt.	9.5'	7'
13	8" X 4" Tee	24	A	2	2+53/Rt.	9.5'	13'
14	4" Stub	30	A	2	3+05.3/Lt.	9.5'	10'
15	4" Stub	25	A	2	3+05.3/Rt.	9.5'	13'
16	8" X 4" Tee	29	A	2	3+93/Lt.	8.5'	7'
17	8" X 4" Tee	26	A	2	4+03/Rt.	8.5'	13'

NOTE: Vertical Riser Pipe shall be extended to 2' minimum above ground water elevation and 4' maximum below proposed ground elevation.



B Baughman
 Silvertown Addition - Phase II
LINE 2
 Sanitary Sewer Improvements

PROJECT NUMBER: 468-84244
 DESIGN: JAK
 DRAWN: JAK
 APPROVED: DATE: 4/02/08
 SCALE: NOTED
 SHEET: **4 OF 20**

Silvertown Phase 2 SS3.dwg 07-10-E953