

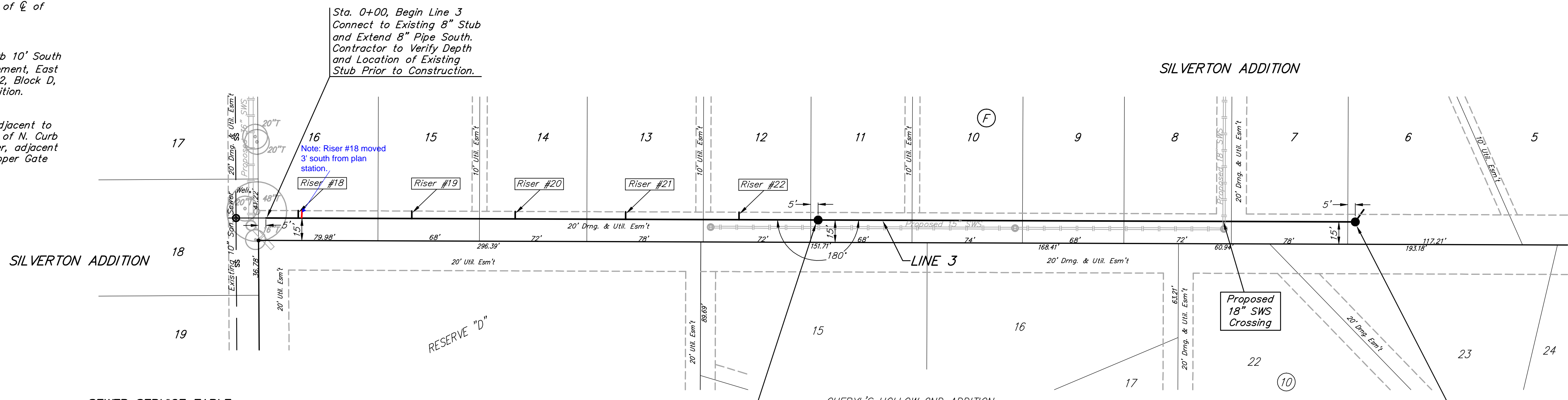
BENCHMARKS:
 135th St. W. & 13th St. N. - City of Wichita Disc at Southwest Corner of Intersection, 30.00'± S. of ☉ of 13th St. N. 35.00'± W. of ☉ of 135th St. W.
 Elev. = 1355.65 MSL

"□" Cut in Top of Curb 10' South of end of Existing Pavement, East Curb adjacent to Lot 12, Block D, Copper Gate North Addition.
 Elev. = 1362.13 MSL

BM Disc in top Curb Adjacent to Fire Hydrant at E. End of N. Curb Return of Kiwi & Decker, adjacent to Lot 16, Block D, Copper Gate North Addition.
 Elev. = 1361.04 MSL



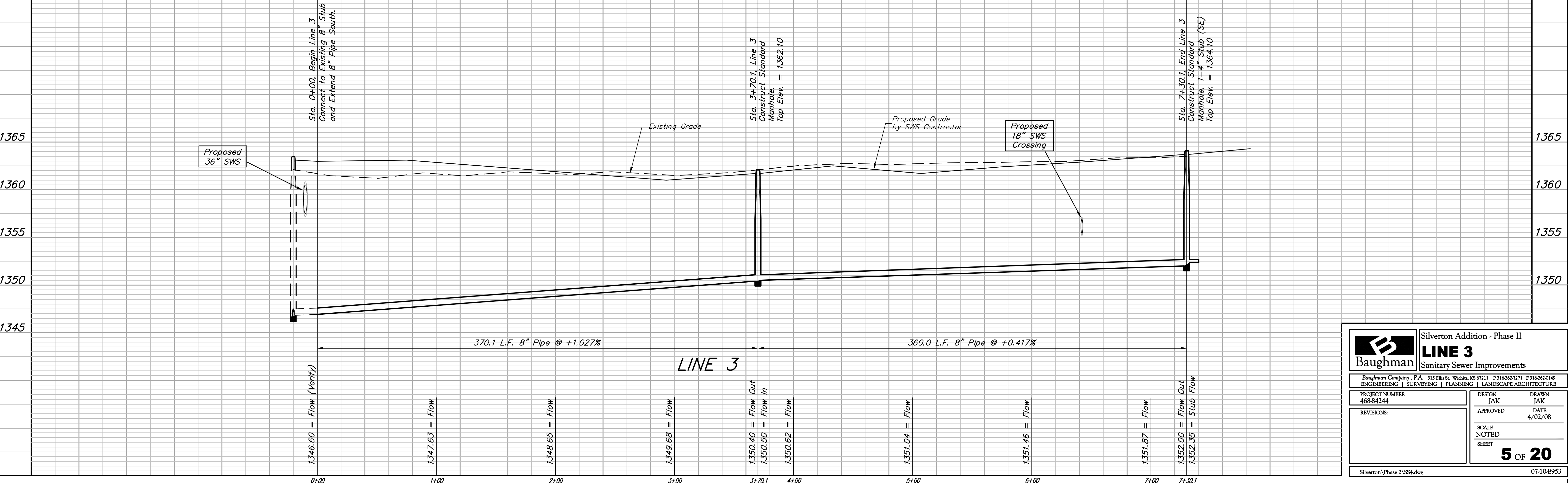
SCALE:
 1" = 40' HORIZONTAL
 1" = 5' VERTICAL
 • = IRON



SEWER SERVICE TABLE

NUMBER	TYPE	LOCATION			FOR INFORMATION ONLY		
		LOT NO.	BLOCK NO.	LINE NO.	STATION/DIRECTION	APPROXIMATE LENGTH 4" PIPE	
18	8" X 4" Tee	16	F	3	0+42/Lt.45	11'	5'
19	8" X 4" Tee	15	F	3	1+18/Lt.	10'	5'
20	8" X 4" Tee	14	F	3	1+87/Lt.	9'	5'
21	8" X 4" Tee	13	F	3	2+61/Lt.	8'	5'
22	8" X 4" Tee	12	F	3	3+37/Lt.	8'	5'

NOTE: Vertical Riser Pipe shall be extended to 2' minimum above ground water elevation and 4' maximum below proposed ground elevation.



Baughman Silvertown Addition - Phase II
LINE 3
 Sanitary Sewer Improvements

ENGINEERING | SURVEYING | PLANNING | LANDSCAPE ARCHITECTURE

PROJECT NUMBER: 468-84244 DESIGN: JAK DRAWN: JAK
 APPROVED: DATE: 4/02/08

REVISIONS:

SCALE: NOTED
 SHEET: **5 OF 20**

Silvertown Phase 2 SS4.dwg 07-10-E953