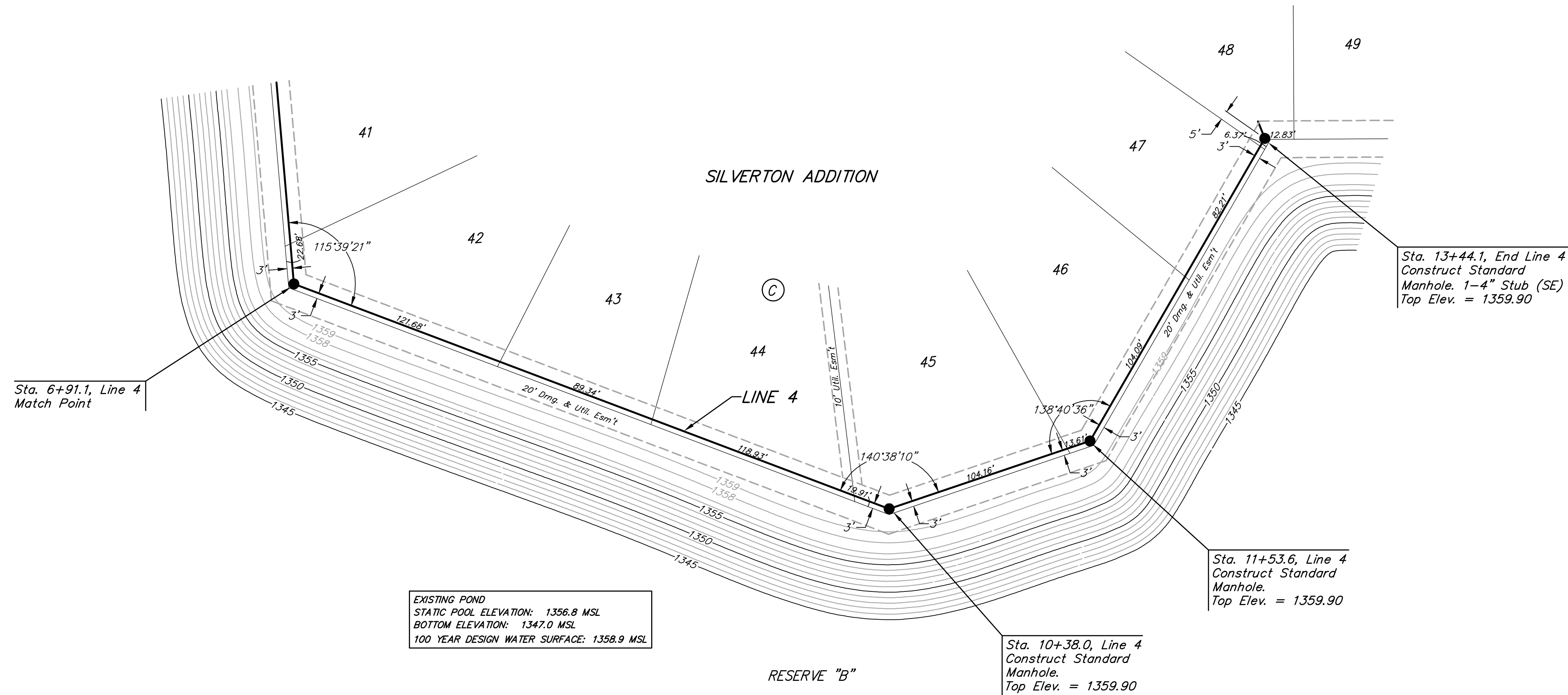


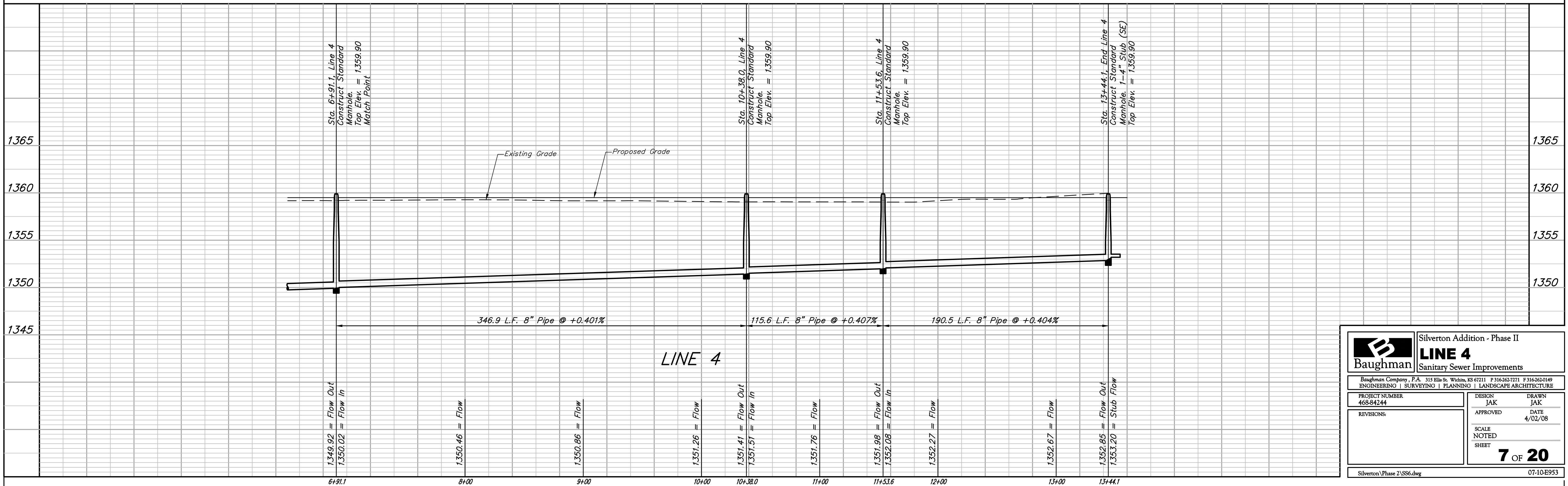
BENCHMARKS:
 135th St. W. & 13th St. N. - City of Wichita Disc at Southwest Corner of Intersection, 30.00'± S. of \mathcal{C} of 13th St. N. 35.00'± W. of \mathcal{C} of 135th St. W.
 Elev. = 1355.65 MSL

"□" Cut in Top of Curb 10' South of end of Existing Pavement, East Curb adjacent to Lot 12, Block D, Copper Gate North Addition.
 Elev. = 1362.13 MSL

BM Disc in top Curb Adjacent to Fire Hydrant at E. End of N. Curb Return of Kiwi & Decker, adjacent to Lot 16, Block D, Copper Gate North Addition.
 Elev. = 1361.04 MSL



SCALE:
 1" = 40' HORIZONTAL
 1" = 5' VERTICAL
 • = IRON



		Silvertown Addition - Phase II LINE 4 Sanitary Sewer Improvements	
		<small>Baughman Company, P.A. 315 Ellis St. Wichita, KS 67211 P 316-262-7271 F 316-262-0149 ENGINEERING SURVEYING PLANNING LANDSCAPE ARCHITECTURE</small>	
PROJECT NUMBER 468-84244	DESIGN JAK	DRAWN JAK	DATE 4/02/08
REVISIONS:	APPROVED	SCALE NOTED	SHEET 7 OF 20
<small>Silvertown Phase 2 SS6.dwg</small>			<small>07-10-E953</small>