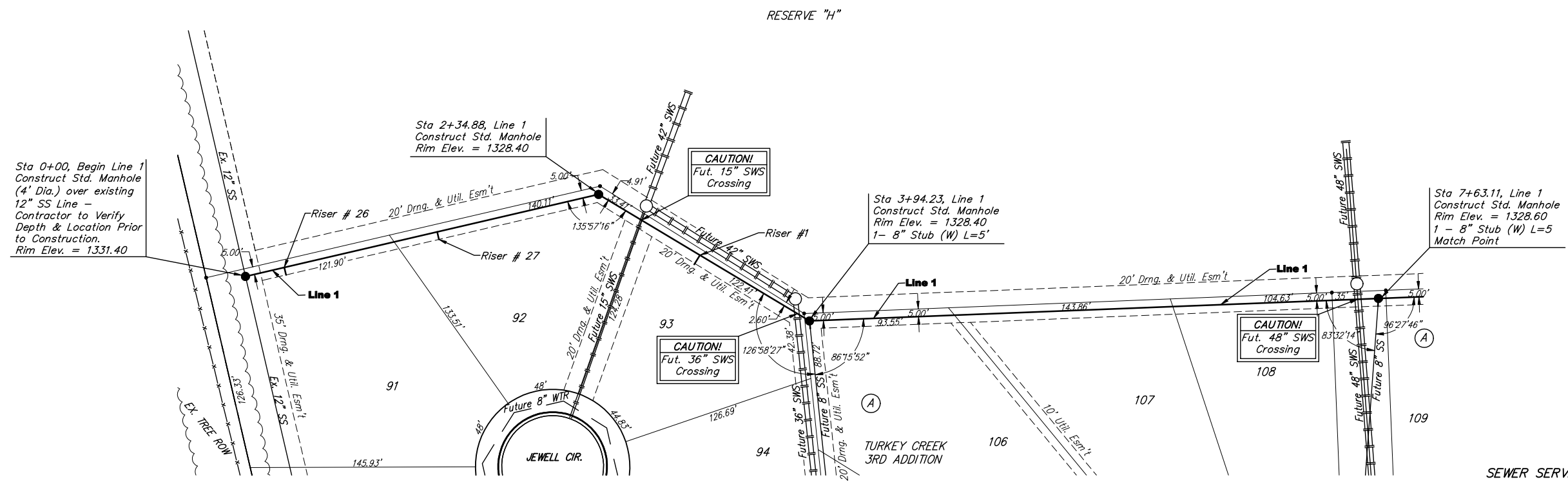


**BENCHMARKS:**

135th St. W. & Pawnee—  
City of Wichita Benchmark  
Disc on SW Corner of  
Concrete Base of High Line  
Pole.  
Elev. = 1359.65 NGVD29

119th St. W. & Pawnee—  
City of Wichita Benchmark  
Disc 0.5 miles S of Kellogg.  
42.2' E of centerline & 6.4'  
S of Power Pole.  
Elev. = 1332.09 MSL

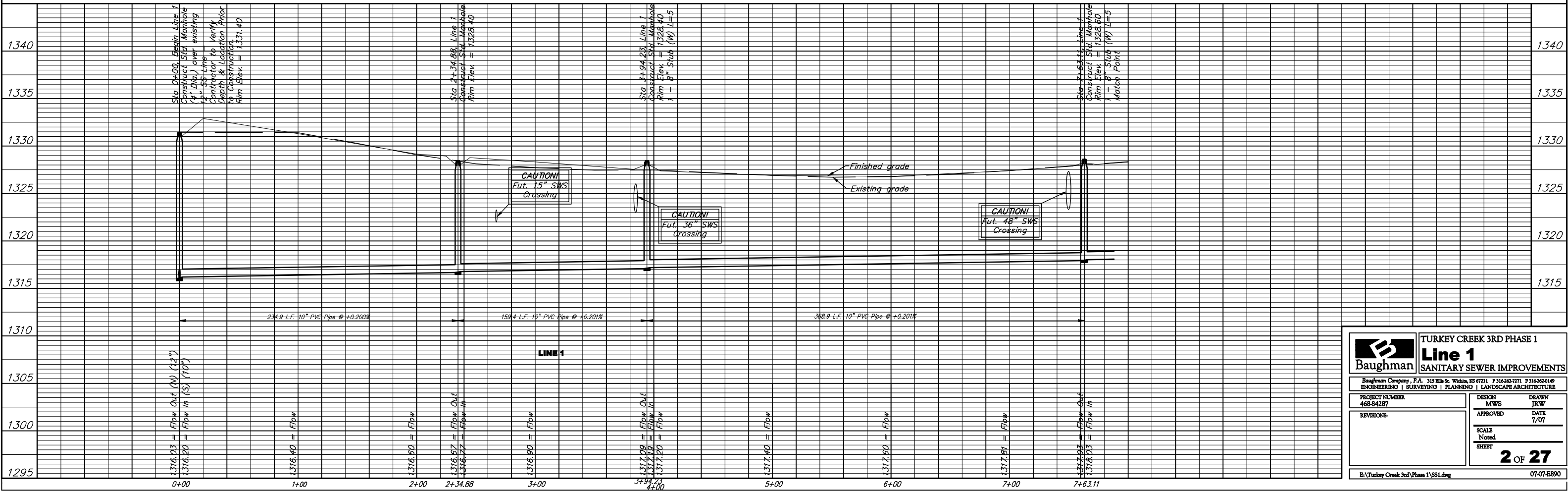
Scale:  
1" = 40' Horizontal  
1" = 5' Vertical  
• = Iron



SEWER SERVICE TABLE

Upstream	Downstream	NUMBER	TYPE	LOCATION			FOR INFORMATION ONLY		
				LOT NO.	BLOCK NO.	LINE NO.	STATION \ DIRECTION	APPROXIMATE LENGTH 4" PIPE	
83'	77'	1	10" X 4" Tee	93	A	1	3+11.50/Rt.	10'	7'
209'	26'	26	10" X 4" Tee	91	A	1	0+25.84/Rt.	14'	5'
107'	128'	27	10" X 4" Tee	92	A	1	1+27.50/Rt.	14'	5'

NOTE: Vertical Riser Pipe shall be extended to 2' minimum above ground water elevation and 4' maximum below proposed ground elevation.



**Baughman** TURKEY CREEK 3RD PHASE 1  
**Line 1**  
SANITARY SEWER IMPROVEMENTS

Baughman Company, P.A. 315 Ellis St. Wichita, KS 67211 P 316-262-7771 F 316-262-0149  
ENGINEERING | SURVEYING | PLANNING | LANDSCAPE ARCHITECTURE

PROJECT NUMBER 468-84287	DESIGN MWS	DRAWN JRW
REVISIONS	APPROVED	DATE 7/07
	SCALE Noted	SHEET <b>2 OF 27</b>

E:\Turkey Creek 3rd Phase 1\SS1.dwg 07-07-8890