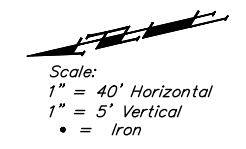


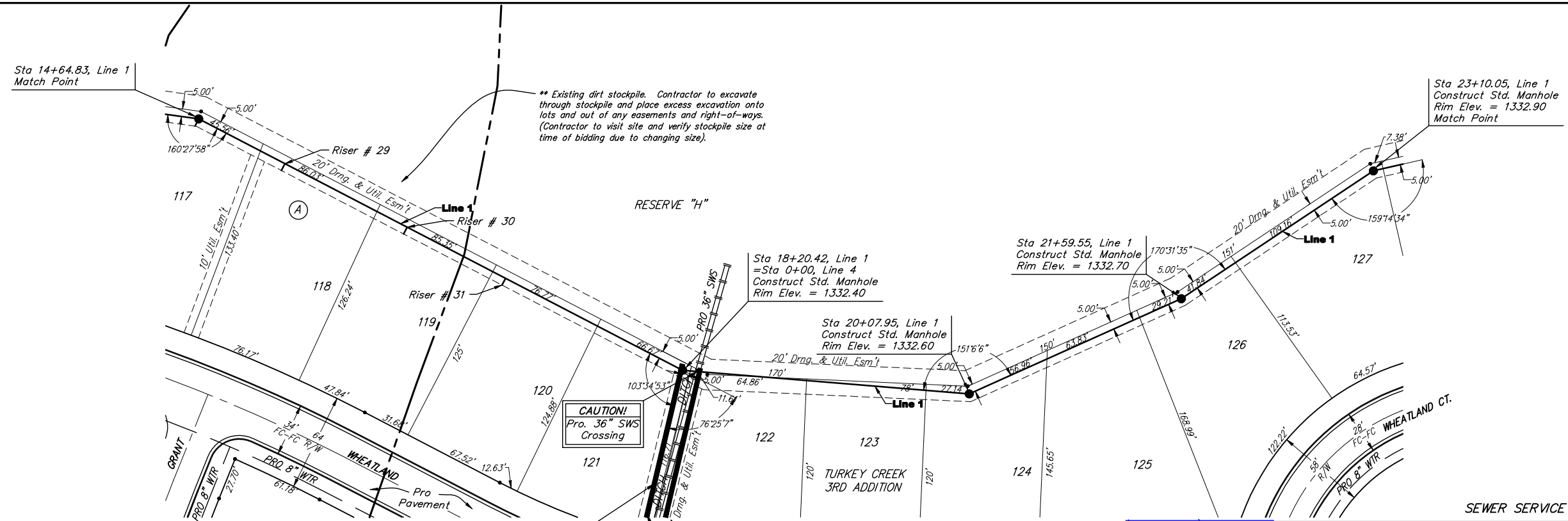
**BENCHMARKS:**

135th St. W. & Pawnee—  
City of Wichita Benchmark  
Disc on SW Corner of  
Concrete Base of High Line  
Pole.  
Elev. = 1359.65 NGVD29

119th St. W. & Pawnee—  
City of Wichita Benchmark  
Disc 0.5 miles S of Kellogg.  
42.2' E of centerline & 6.4'  
S of Power Pole.  
Elev. = 1332.09 MSL



Scale:  
1" = 40' Horizontal  
1" = 5' Vertical  
• = Iron



\*\* Existing dirt stockpile. Contractor to excavate through stockpile and place excess excavation onto lots and out of any easements and right-of-ways. (Contractor to visit site and verify stockpile size at time of bidding due to changing size).

\*\* Developer states that stockpiles should be moved from site before construction starts. But just in case, refer to above note.

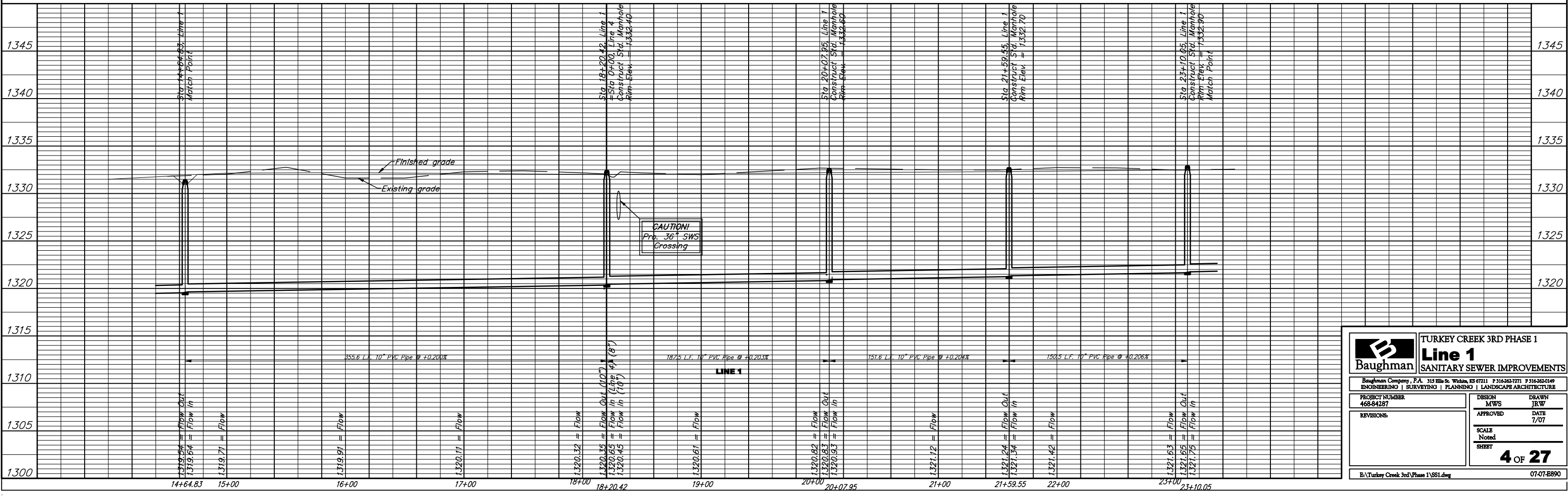
Existing drainage ditch from previous mass grading. Contractor to make sure site still drains fairly well when completed with SS.

**CAUTION!**  
Pro. 36" SWS Crossing

**SEWER SERVICE TABLE**

Upstream	Downstream	NUMBER	TYPE	LOCATION			FOR INFORMATION ONLY		
				LOT NO.	BLOCK NO.	LINE NO.	STATION \ DIRECTION	APPROXIMATE LENGTH 4" PIPE	VERTICAL
292'	63'	29	10" X 4" Tee	118	A	1	15+28.22/Rt.	11'	5'
202'	153'	30	10" X 4" Tee	119	A	1	16+17.99/Rt.	11'	5'
130'	226'	31	10" X 4" Tee	120	A	1	16+90.34/Rt.	11'	5'

NOTE: Vertical Riser Pipe shall be extended to 2' minimum above ground water elevation and 4' maximum below proposed ground elevation.



**Baughman** TURKEY CREEK 3RD PHASE 1  
**Line 1**  
SANITARY SEWER IMPROVEMENTS

Baughman Company, P.A. 315 Ellis St. Wichita, KS 67211 P 316-262-7771 F 316-262-0149  
ENGINEERING | SURVEYING | PLANNING | LANDSCAPE ARCHITECTURE

PROJECT NUMBER: 468-84287  
DESIGN: MWS  
DRAWN: JRW

REVISIONS:  
APPROVED: DATE: 7/07

SCALE: Noted  
SHEET: 4 OF 27

07-07-E890