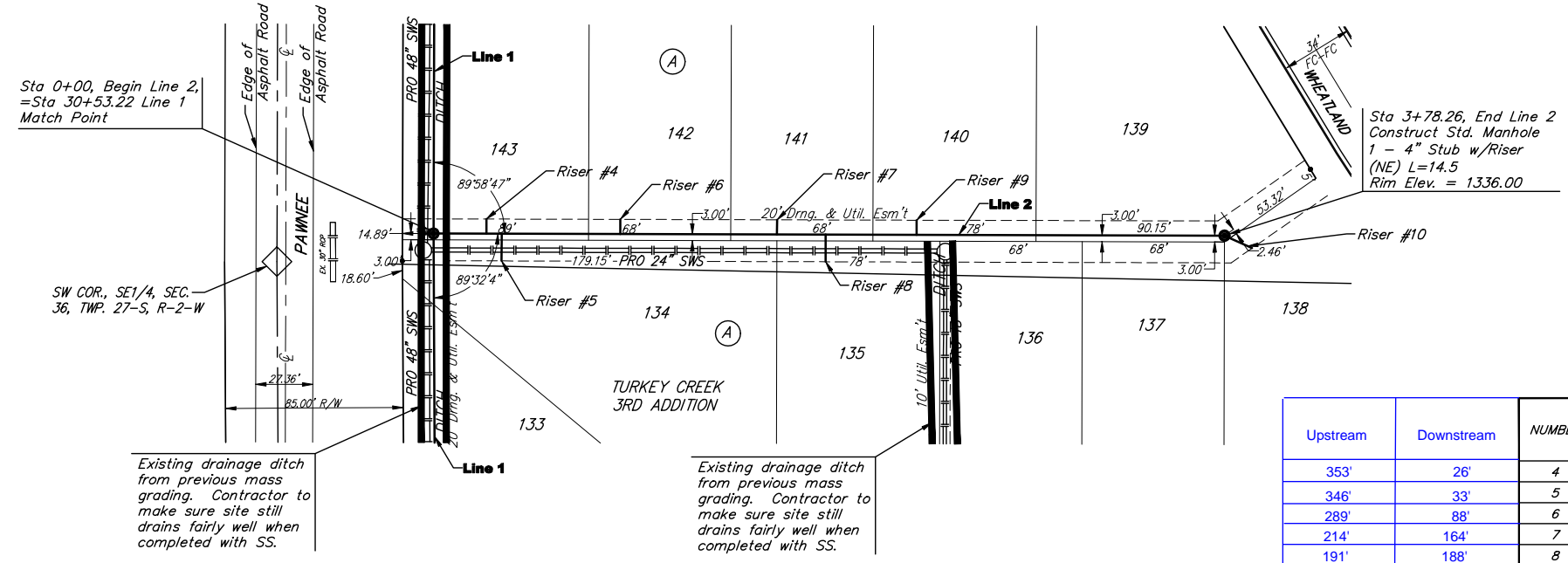


BENCHMARKS:

135th St. W. & Pawnee—
City of Wichita Benchmark
Disc on SW Corner of
Concrete Base of High Line
Pole.
Elev. = 1359.65 NGVD29

119th St. W. & Pawnee—
City of Wichita Benchmark
Disc 0.5 miles S of Kellogg.
42.2' E of centerline & 6.4"
S of Power Pole.
Elev. = 1332.09 MSL

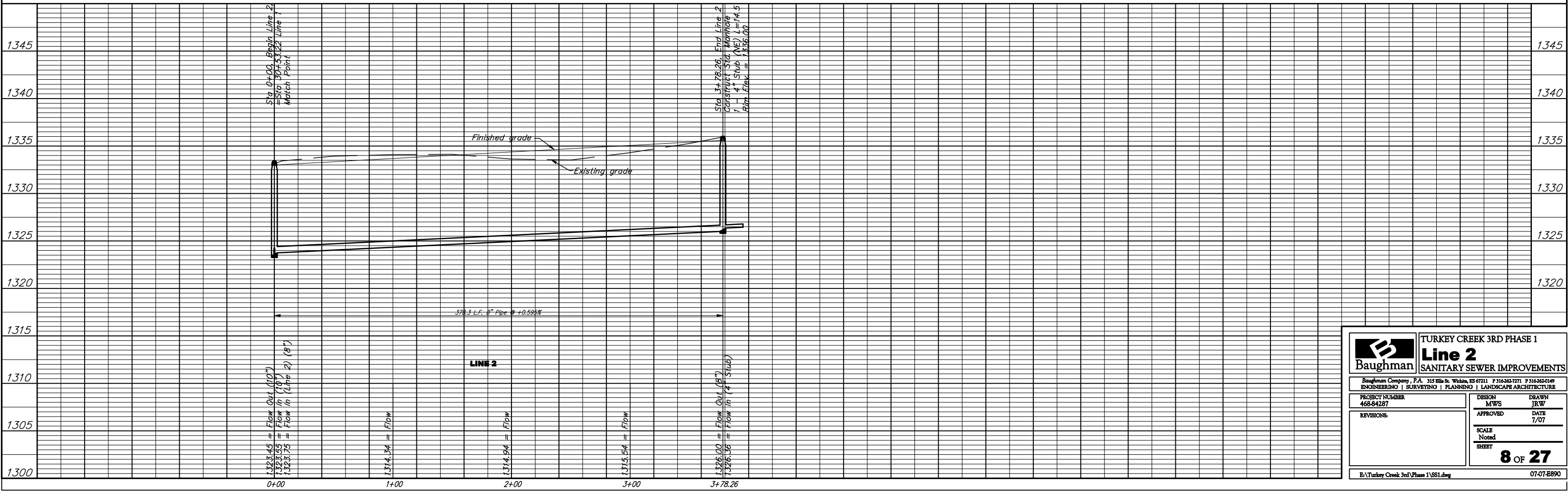
Scale:
1" = 40' Horizontal
1" = 5' Vertical
• = Iron



SEWER SERVICE TABLE

Upstream	Downstream	NUMBER	TYPE	LOCATION			FOR INFORMATION ONLY		
				LOT NO.	BLOCK NO.	LINE NO.	STATION DIRECTION	APPROXIMATE LENGTH 4" PIPE	VERTICAL
353'	26'	4	8" X 4" Tee	143	A	2	0+25.25/Lt.	8'	7'
346'	33'	5	8" X 4" Tee	134	A	2	0+32.58/Rt.	8'	13'
289'	88'	6	8" X 4" Tee	142	A	2	0+89.31/Lt.	8'	7'
214'	164'	7	8" X 4" Tee	141	A	2	1+64.26/Lt.	8'	7'
191'	188'	8	8" X 4" Tee	135	A	2	1+87.51/Rt.	8'	13'
147'	231'	9	8" X 4" Tee	140	A	2	2+30.98/Rt.	9'	7'
0	378'	10	4" Stub w/ Riser	138	A	2	3+78.26/Rt.	9'	14.5'

NOTE: Vertical Riser Pipe shall be extended to 2' minimum above ground water elevation and 4' maximum below proposed ground elevation.



Baughman TURKEY CREEK 3RD PHASE 1
Line 2
SANITARY SEWER IMPROVEMENTS

Baughman Company, P.A. 315 Ellis St. Wichita, KS 67211 P 316-262-7771 F 316-262-0149
ENGINEERING | SURVEYING | PLANNING | LANDSCAPE ARCHITECTURE

PROJECT NUMBER 468-84287	DESIGN MWS	DRAWN JRW
REVISIONS	APPROVED	DATE 7/07
	SCALE Noted	SHEET 8 OF 27

E:\Turkey Creek 3rd Phase 1\SS1.dwg 07-07-E890