

**BENCHMARKS:**

135th St. W. & Pawnee-  
City of Wichita Benchmark  
Disc on SW Corner of  
Concrete Base of High Line  
Pole.  
Elev. = 1359.65 NGVD29

119th St. W. & Pawnee-  
City of Wichita Benchmark  
Disc 0.5 miles S of Kellogg.  
42.2' E of centerline & 6.4'  
S of Power Pole.  
Elev. = 1332.09 MSL

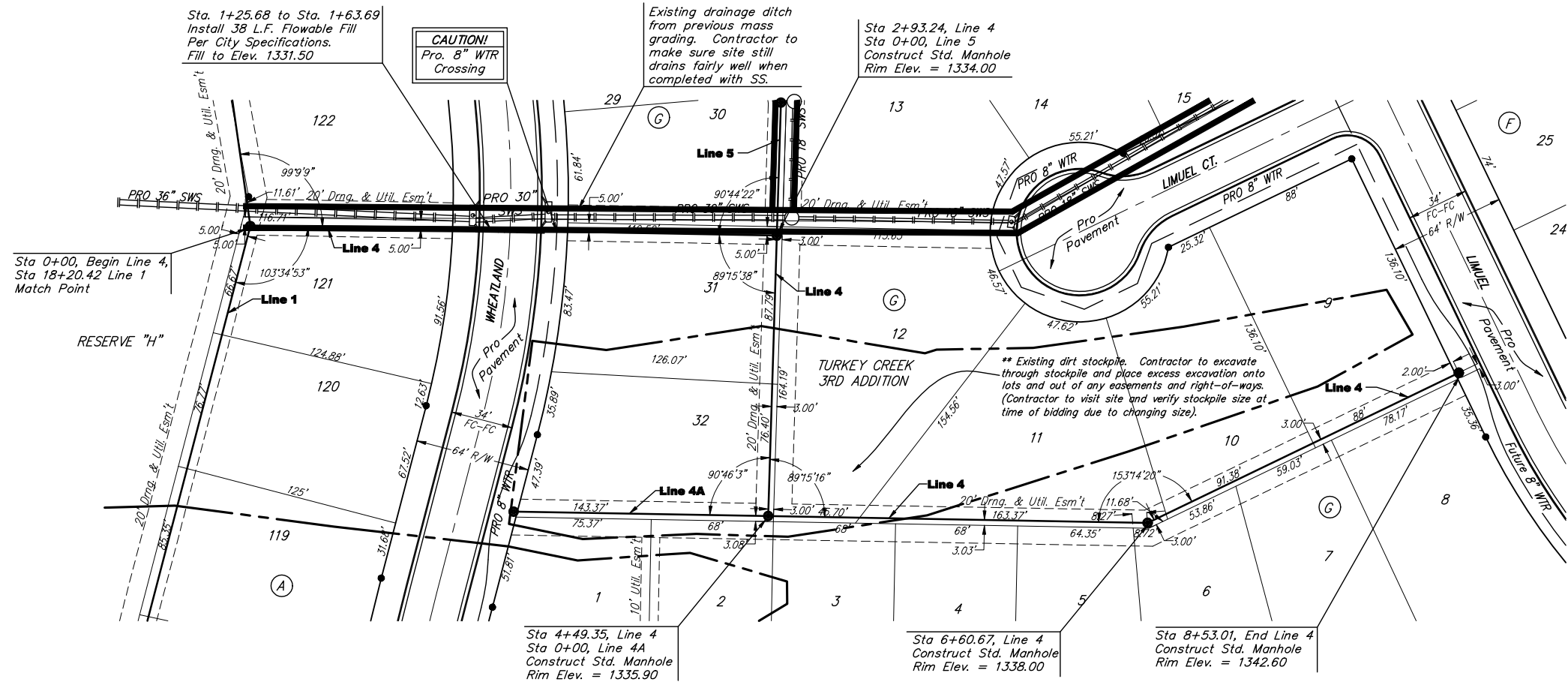
Sta. 1+25.68 to Sta. 1+63.69  
Install 38' L.F. Flowable Fill  
Per City Specifications.  
Fill to Elev. 1331.50

**CAUTION!**  
Pro. 8" WTR  
Crossing

Existing drainage ditch  
from previous mass  
grading. Contractor to  
make sure site still  
drains fairly well when  
completed with SS.

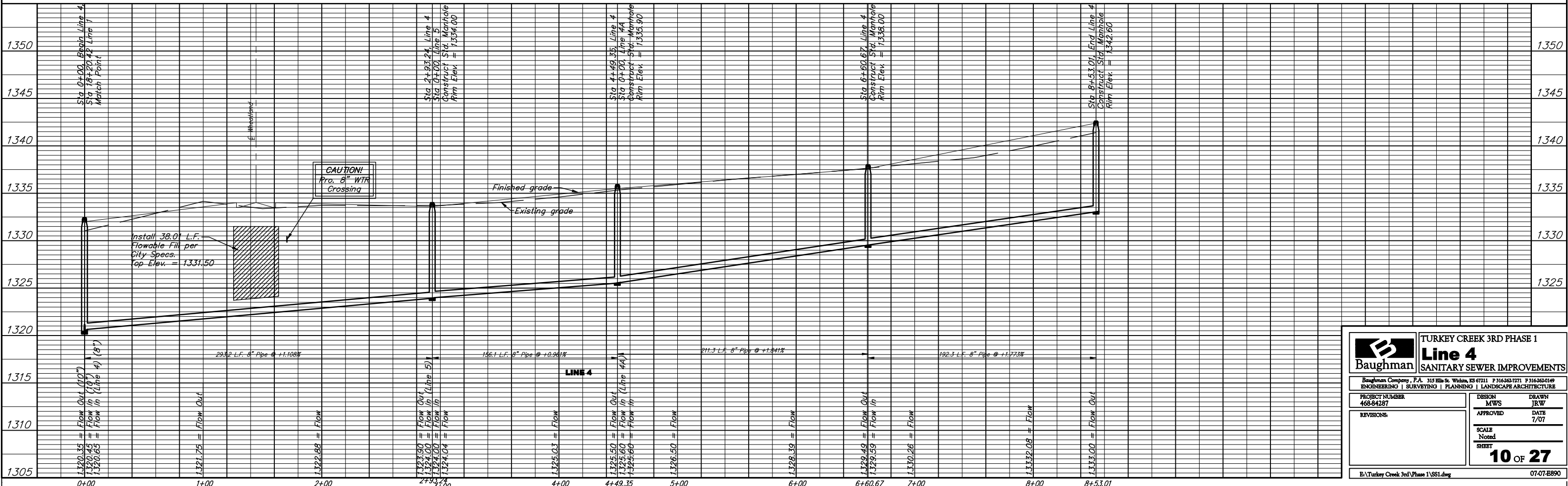
Sta 2+93.24, Line 4  
Sta 0+00, Line 5  
Construct Std. Manhole  
Rim Elev. = 1334.00

Scale:  
1" = 40' Horizontal  
1" = 5' Vertical  
• = Iron



\*\* Existing dirt stockpile. Contractor to excavate through stockpile and place excess excavation onto lots and out of any easements and right-of-ways. (Contractor to visit site and verify stockpile size at time of bidding due to changing size).

\*\* Developer states that stockpiles should be moved from site before construction starts. But just in case, refer to above note.



		<b>TURKEY CREEK 3RD PHASE 1</b> <b>Line 4</b> <b>SANITARY SEWER IMPROVEMENTS</b>	
		<small>Baughman Company, P.A. 315 Ellis St. Wichita, KS 67211 P 316-262-7771 F 316-262-0149                  ENGINEERING   SURVEYING   PLANNING   LANDSCAPE ARCHITECTURE</small>	
PROJECT NUMBER 468-84287	DESIGN MWS	DRAWN JRW	DATE 7/07
REVISIONS	APPROVED	SCALE Noted SHEET	10 OF 27
<small>E:\Turkey Creek 3rd Phase 1\SS1.dwg</small>			<small>07-07-E890</small>