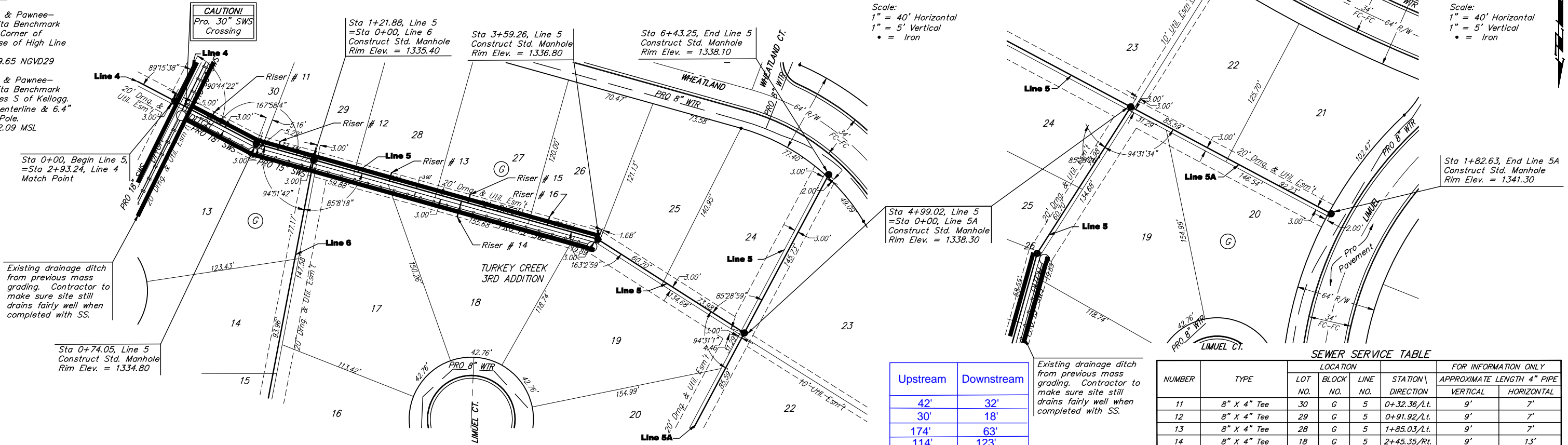


BENCHMARKS:

135th St. W. & Pawnee—
City of Wichita Benchmark
Disc on SW Corner of
Concrete Base of High Line
Pole.
Elev. = 1359.65 NGVD29

119th St. W. & Pawnee—
City of Wichita Benchmark
Disc 0.5 miles S of Kellogg.
42.2' E of centerline & 6.4"
S of Power Pole.
Elev. = 1332.09 MSL



Scale:
1" = 40' Horizontal
1" = 5' Vertical
• = Iron

Scale:
1" = 40' Horizontal
1" = 5' Vertical
• = Iron

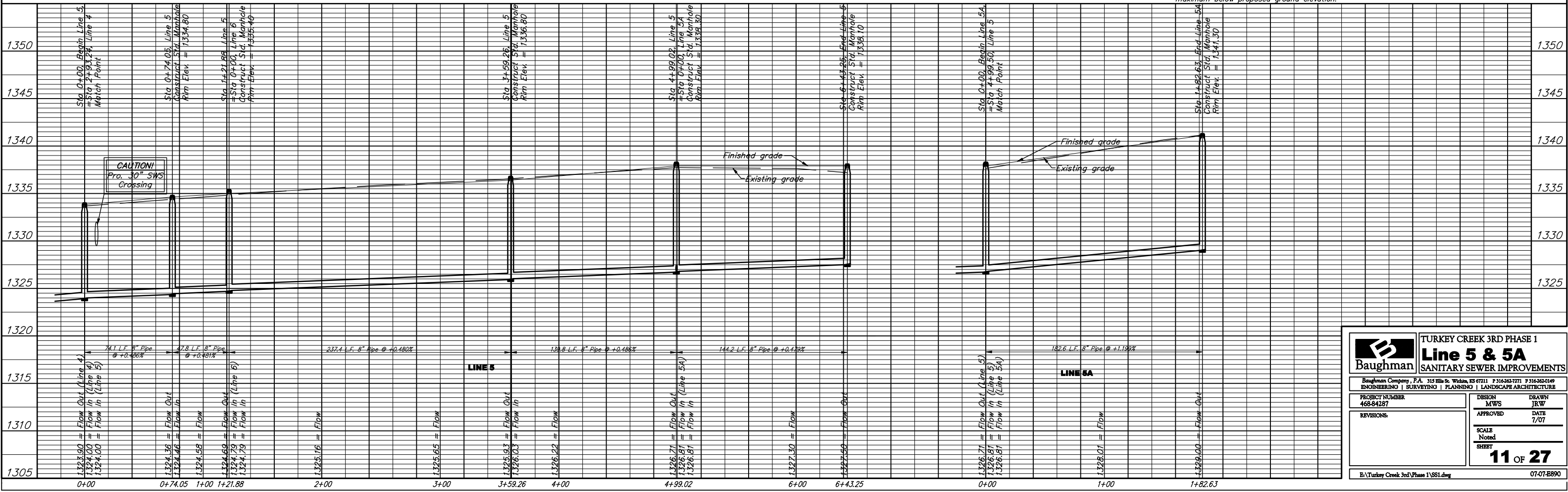
Upstream	Downstream
42'	32'
30'	18'
174'	63'
114'	123'
109'	129'
42'	195'

Existing drainage ditch from previous mass grading. Contractor to make sure site still drains fairly well when completed with SS.

SEWER SERVICE TABLE

NUMBER	TYPE	LOCATION			STATION \ DIRECTION	FOR INFORMATION ONLY	
		LOT NO.	BLOCK NO.	LINE		APPROXIMATE LENGTH 4" PIPE	
						VERTICAL	HORIZONTAL
11	8" X 4" Tee	30	G	5	0+32.36/Lt.	9'	7'
12	8" X 4" Tee	29	G	5	0+91.92/Lt.	9'	7'
13	8" X 4" Tee	28	G	5	1+85.03/Lt.	9'	7'
14	8" X 4" Tee	18	G	5	2+45.35/Rt.	9'	13'
15	8" X 4" Tee	27	G	5	2+50.69/Lt.	9'	7'
16	8" X 4" Tee	26	G	5	3+16.94/Lt.	9'	7'

NOTE: Vertical Riser Pipe shall be extended to 2' minimum above ground water elevation and 4' maximum below proposed ground elevation.



Baughman TURKEY CREEK 3RD PHASE 1
Line 5 & 5A
SANITARY SEWER IMPROVEMENTS

848-84287

DESIGN: MWS
DRAWN: JRW

APPROVED: _____ DATE: 7/07

SCALE: Noted
SHEET: **11 OF 27**

REVISIONS:

8-Turkey Creek 3rd Phase 1\SS1.dwg 07-07-E890