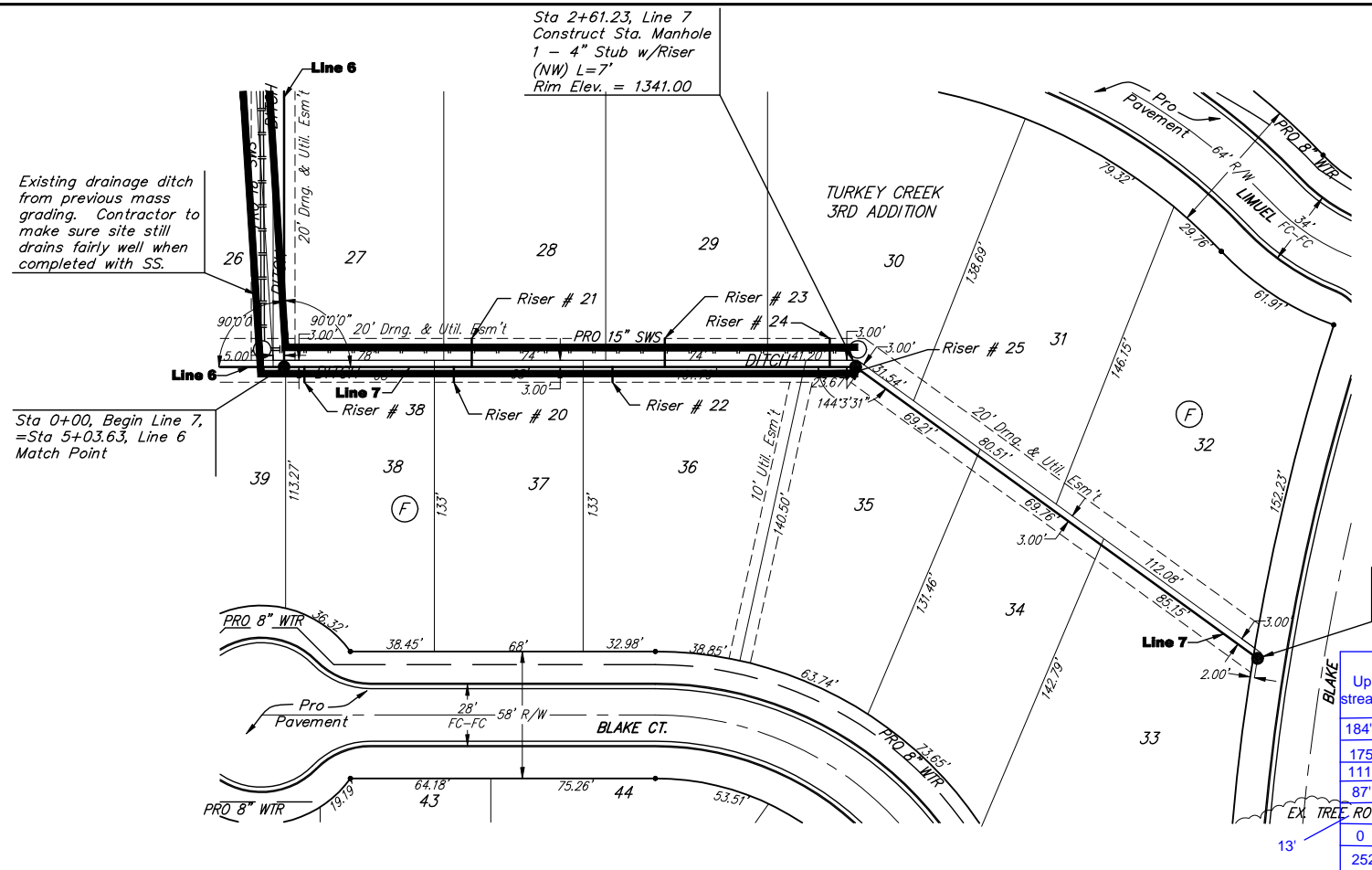


**BENCHMARKS:**

135th St. W. & Pawnee—  
City of Wichita Benchmark  
Disc on SW Corner of  
Concrete Base of High Line  
Pole.  
Elev. = 1359.65 NGVD29

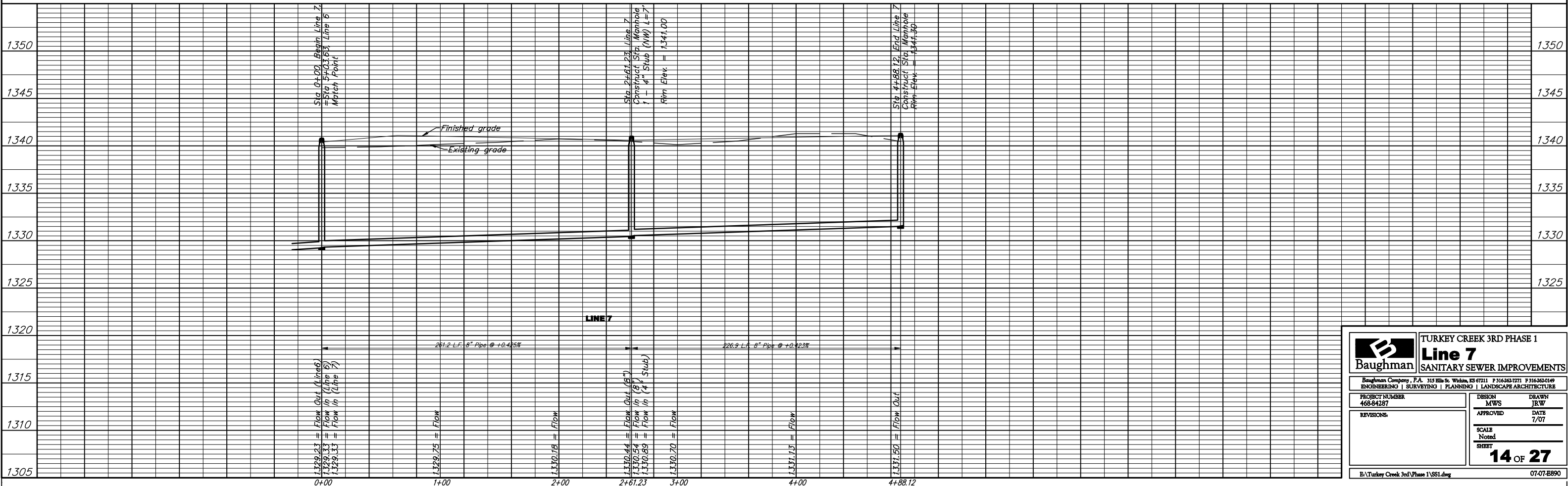
119th St. W. & Pawnee—  
City of Wichita Benchmark  
Disc 0.5 miles S of Kellogg.  
42.2' E of centerline & 6.4"  
S of Power Pole.  
Elev. = 1332.09 MSL

Scale:  
1" = 40' Horizontal  
1" = 5' Vertical  
• = Iron



NUMBER	TYPE	LOCATION			FOR INFORMATION ONLY		
		LOT NO.	BLOCK NO.	LINE NO.	STATION DIRECTION	APPROXIMATE LENGTH 4" PIPE	
						VERTICAL	HORIZONTAL
184'	78'						
20	8" X 4" Tee	37	F	7	0+77.59/Rt.	10'	7'
21	8" X 4" Tee	28	F	7	0+85.84/Lt.	10'	13'
22	8" X 4" Tee	36	F	7	1+50.10/Rt.	10'	7'
23	8" X 4" Tee	29	F	7	1+73.95/Lt.	10'	13'
24	8" X 4" Tee	30	F	7	2+48.45/Lt.	9'	13'
25	4" Stub w/ Riser	35	F	7	2+61.23/Rt.	9'	7'
38	8" X 4" Tee	38	F	7	0+09.34/Rt.	10'	7'

NOTE: Vertical Riser Pipe shall be extended to 2' minimum above ground water elevation and 4' maximum below proposed ground elevation.



**Baughman** TURKEY CREEK 3RD PHASE 1  
**Line 7**  
SANITARY SEWER IMPROVEMENTS

ENGINEERING | SURVEYING | PLANNING | LANDSCAPE ARCHITECTURE

PROJECT NUMBER: 468-84287 DESIGN: MWS DRAWN: JRW  
APPROVED: DATE: 7/07

REVISIONS:

SCALE: Noted SHEET: **14 OF 27**

E:\Turkey Creek 3rd Phase 1\SS1.dwg 07-07-8890