

GENERAL NOTES:

- M.S.L. Datum.
- Contractor will be required to provide a minimum advance notice of twenty-four (24) hours to utility companies prior to starting any excavation as follows:
 - Kansas One-Call 1-800-344-7233
 The Contractor must notify the following in case of an emergency:

Cox Communications	262-4270 or 263-2061
Westar Energy	261-6824
Kansas Gas Service	832-3121
Aquila Networks	941-1608
AT&T	268-2102
City of Wichita Water Department	268-4908
City of Wichita Sewer Maintenance	268-4071
- Existing utility lines and their location, as shown on the plans, represent the best information obtainable for design. The contractor will be required to work around existing utilities within the right-of-way which do not conflict with proposed construction.
- Rubble from the removal of miscellaneous structures and excess excavation which is to be wasted shall be disposed of on sites to be provided by the Contractor. These sites shall be approved by the Engineer as to suitability, appearance and site location. Locations that, in the opinion of the Engineer, will leave an unsightly appearance will not be approved.

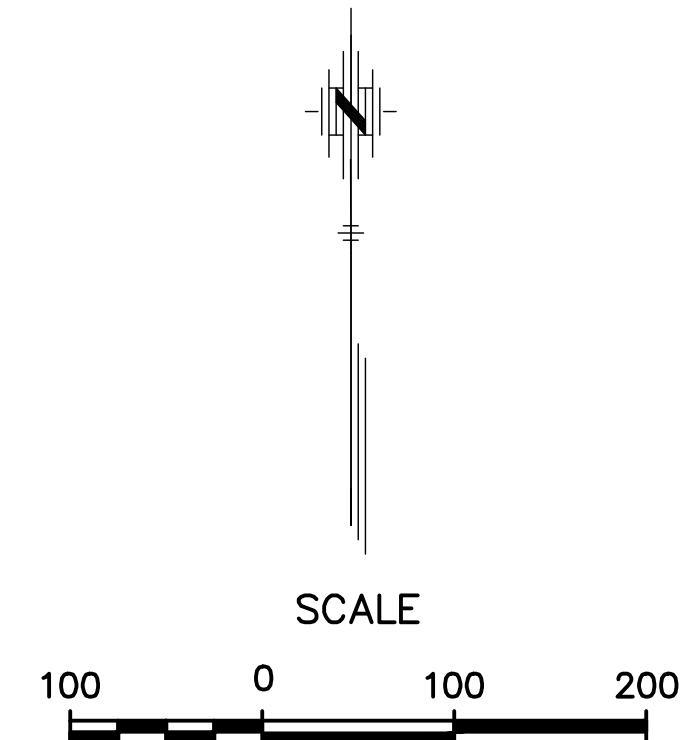
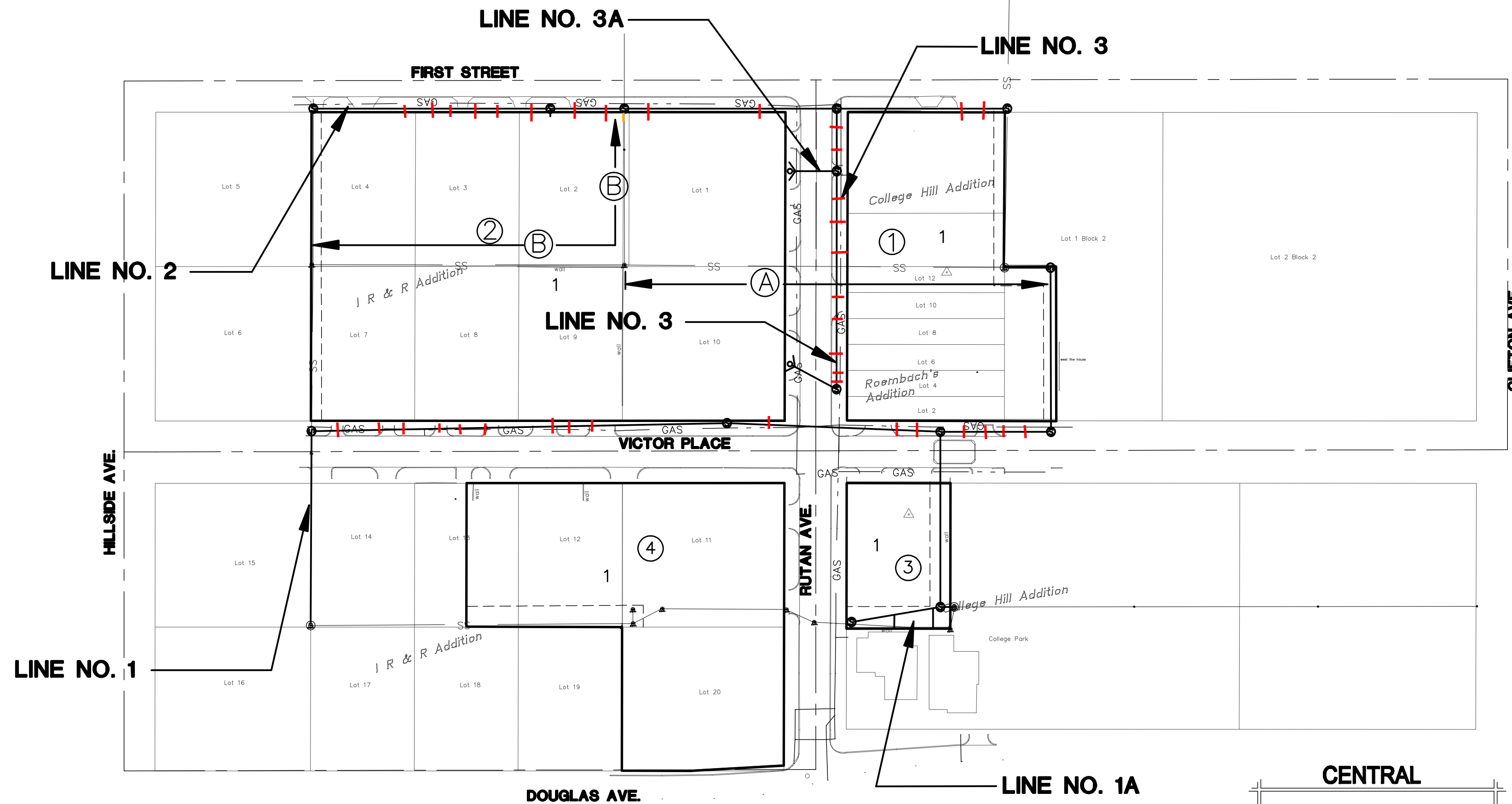
All disposal sites must be approved by the Kansas Department of Health and Environment. Material either stockpiled or disposed of in a flood plain would require a Kansas State Board of Agriculture permit. Any material dumped in waters of the United States or wetlands is subject to U.S. Corps. of Engineers permitting regulations. Any material buried or stockpiled beyond approved construction limits would require additional archaeological investigations unless buried in a previously approved borrow location.
- The Contractor shall be responsible for maintaining continuous flow of sewage through construction. Contractor's proposed method for maintaining sewage flow shall be approved by the Engineer. Cost of maintaining flow of sewage through construction will not be paid for directly and this cost shall be considered as subsidiary to the other pay items of the work.
- The Contractor shall be responsible for preserving property irons. The Contractor will be required to re-establish any property irons which are damaged or destroyed by his construction operations. Such irons shall be re-established by a licensed land surveyor in accordance with state laws.
- Trees and shrubs in public right-of-way which are in direct conflict with proposed new construction shall be removed by the Contractor with the Engineer's approval. Trees and shrubs which are not in direct conflict with the proposed new construction shall be saved and protected from damage.
- Contractor shall vacuum test all manholes according to the City of Wichita standard specifications.
- The tops of all Manholes to be set 0.4 feet above existing ground unless otherwise noted.
- All areas disturbed by sewer construction, i.e. R/W, easements, and adjacent properties shall be restored with the same grass/sod as per AR 78.
- Contractor shall maintain all existing BMP(s) on project site during construction. Contractor shall repair or replace any existing BMP(s) that are damaged (Cost subsidiary to site restoration). If BMP(s) were damaged prior to contractor beginning work on project, notify construction inspector or engineer.
- In street right of way (not under street) and under parking lots, contractor shall backfill trench with sand and flush per City of Wichita specifications.
- Traffic control as necessary shall be per the latest addition of the MUTCD. 2-Type III Barricades w/R11-2 (Road Closed Signs) shall be placed on Rutan, south of First St. and north of Douglas Ave prior to beginning construction. Local traffic access to Victor Place shall be maintained (see sheet 2). Contractor shall notify all property owners affected by the closing of Rutan & Victor prior to placing barricades.
- Depth & location of all existing utilities shown must be field verified. 15. Existing flowline information obtained from city records & field survey.

CONSTRUCTION PLANS FOR SANITARY SEWER EXTENSIONS TO SERVE PARKSTONE ADDITION TO THE CITY OF WICHITA, KANSAS RELOCATION PART OF DISTRICT B, SANITARY SEWER #12

JAMES L. ARMOUR, P.E. - CITY ENGINEER
PROJECT NO. 468-84376
OCA NO. 744247

INDEX

TITLE SHEET	SHEET 1
LINE NO. 1	SHEET 2
LINE NO. 1A & 2	SHEET 3
LINE NO. 3 & 3A	SHEET 4
TYPE "P" MANHOLE	SHEET 5
CLEANOUT DETAILS	SHEET 6
RISER DETAILS	SHEET 7
EROSION CONTROL DETAILS	SHEET 8-12
COORDINATE POINTS LIST	SHEET 13
COPY OF PLAT	SHEET 14



SEWER CONSTRUCTION SEQUENCE

- Construct Line No. 1 Sta. 0+00 to Sta. 10+57.23..
- At Manhole 10+57.23 direct sewage from east to Line No. 1.
- Construct Line No. 1 Sta. 10+57.23 to Sta. 11+01.59.
- Redirect existing sewage from the north at Line No. 1 Sta, 11+01.59 to east.
- Abandon existing sanitary sewer. (A)
- Construct Line No. 2 Sta. 0+00 to Sta. 2+99.36.
- Abandon existing sanitary sewer. (B)
- Construct remaining portions of Line No. 2
- Construct All Remaining Project.

WB Carter - Contractor
Steven May - City of Wichita - Inspector
 Released - 08/01/08
As-Built
Risers & Stub
 :pdf by APR 09/23/09

BENCH MARKS

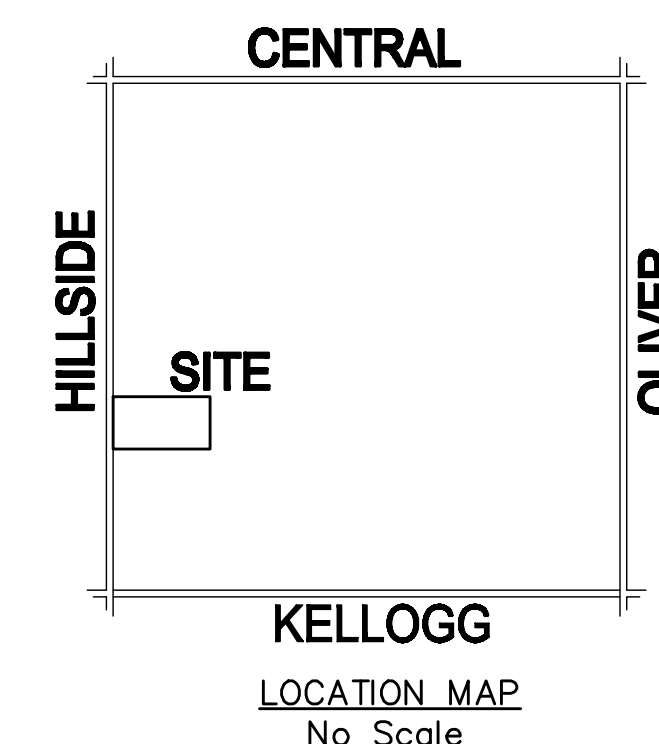
- City of Wichita BM at intersection of Roosevelt and Douglas
Elevation 1358.28
- Square cut on bottom step of sidewalk to Lyndon Hall at N.E. corner Douglas and Rutan
Elevation 1332.23
- Square Cut in Centerline of sidewalks at N.E. corner of 1st Street and Rutan
Elevation 1335.74

OCTOBER 2007

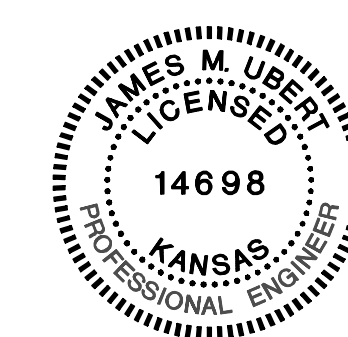
PLANS PREPARED
BY



POE & ASSOCIATES, INC.
CONSULTING ENGINEERS
 5940 E. Central, Suite 200 - Wichita, KS 67208-4242
 Phone 316/685-4114 - FAX 316/685-4444



KELLOGG
LOCATION MAP
No Scale



Contractor shall coordinate project site with Key Construction.
 Contact: Brendan Cox 265-9515

Street pavement may be replaced with road gravel. Sidewalk that is removed will be replaced by others (Paving Contractor)