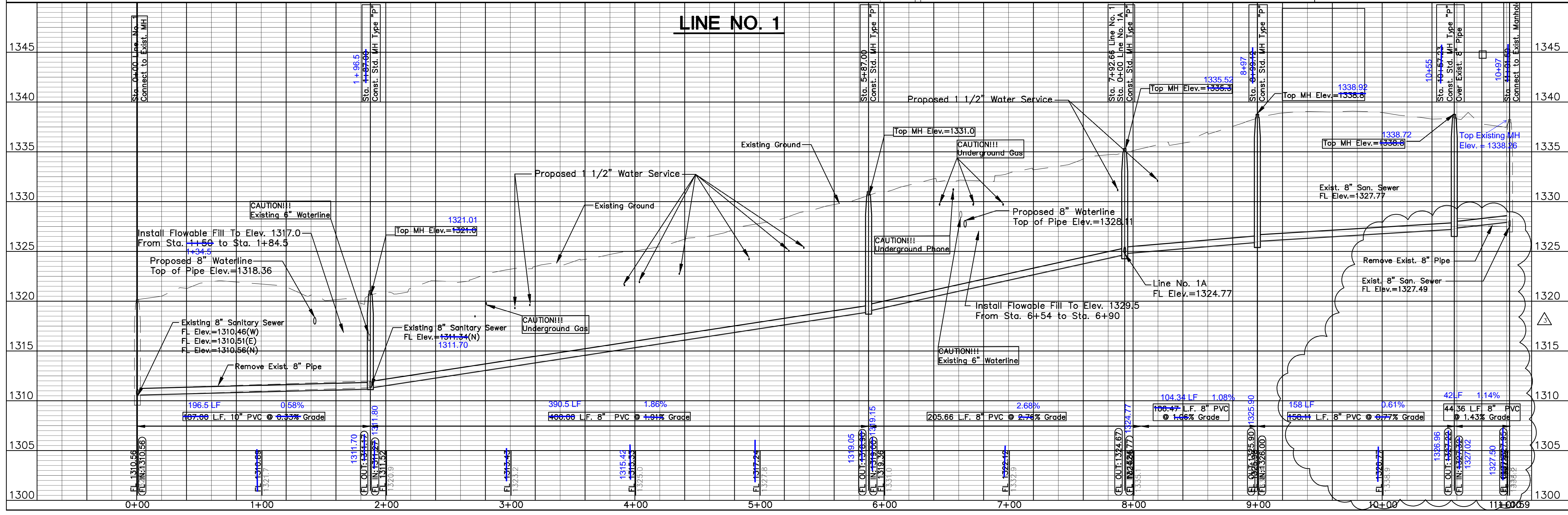


NOTES:

- Contractor to Field Verify location and Depth of All Utilities Prior to Construction and Report Findings Project Engineer.
- Contractor Shall Verify All Exist. Connections and Reconnect All Service Taps that are Not Abandoned. (Exist. Connections are Located at Sta. 0+19.5(E), Sta. 0+22(W) & Sta. 1+90.2(W))



No.	Date	By	Approved	Revision
1	10/12/07	SS	JU	Added Note to Provide for Sewer Service to Existing Structures
2	10/16/07	SS	JU	Revised vertical dimensions in table
3	10/16/07	SS	JU	Revised flowline grade @ Sta. 8+99.12 to Sta. 11+01.59

POE & ASSOCIATES, INC.
 CONSULTING ENGINEERS
 5940 E. Central, Suite 200 • Wichita, KS 67208-4242
 Phone 316/685-4114 • FAX 316/685-4444

FINAL

Designed By: S. Schmat
 Drawn By: M. Tucker
 Sheet No.: 1879
 Date: August 2007

2 of 14