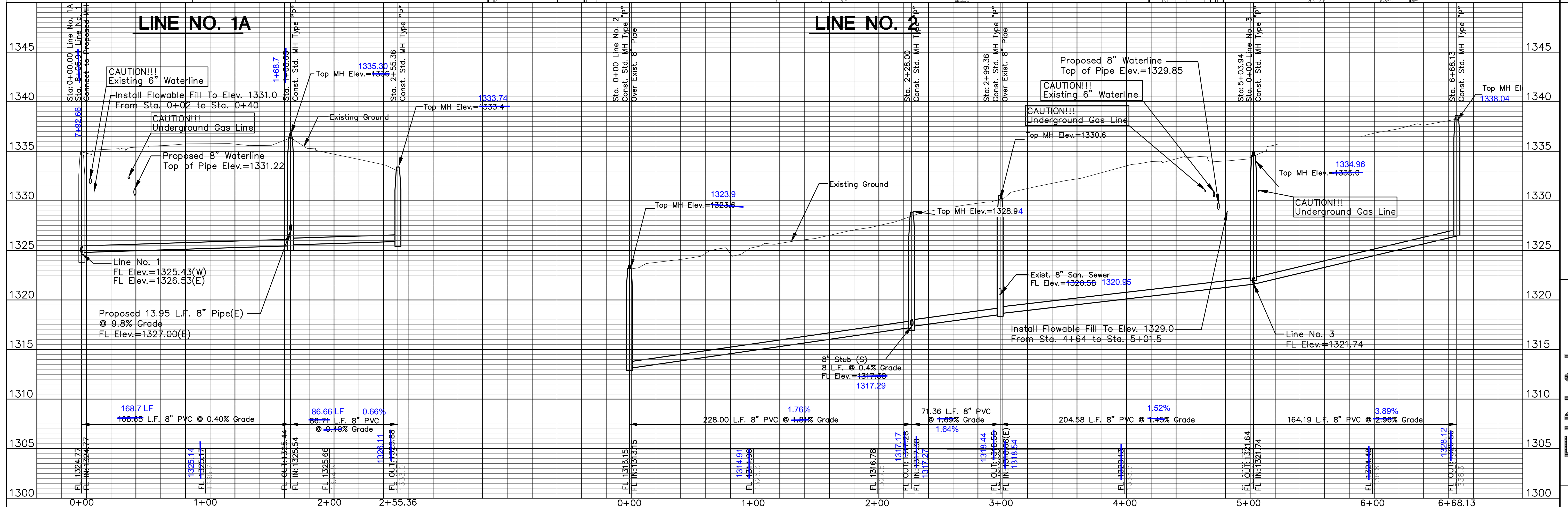
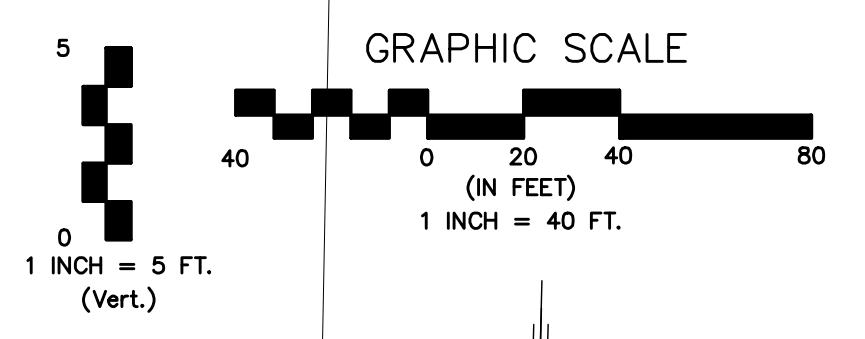
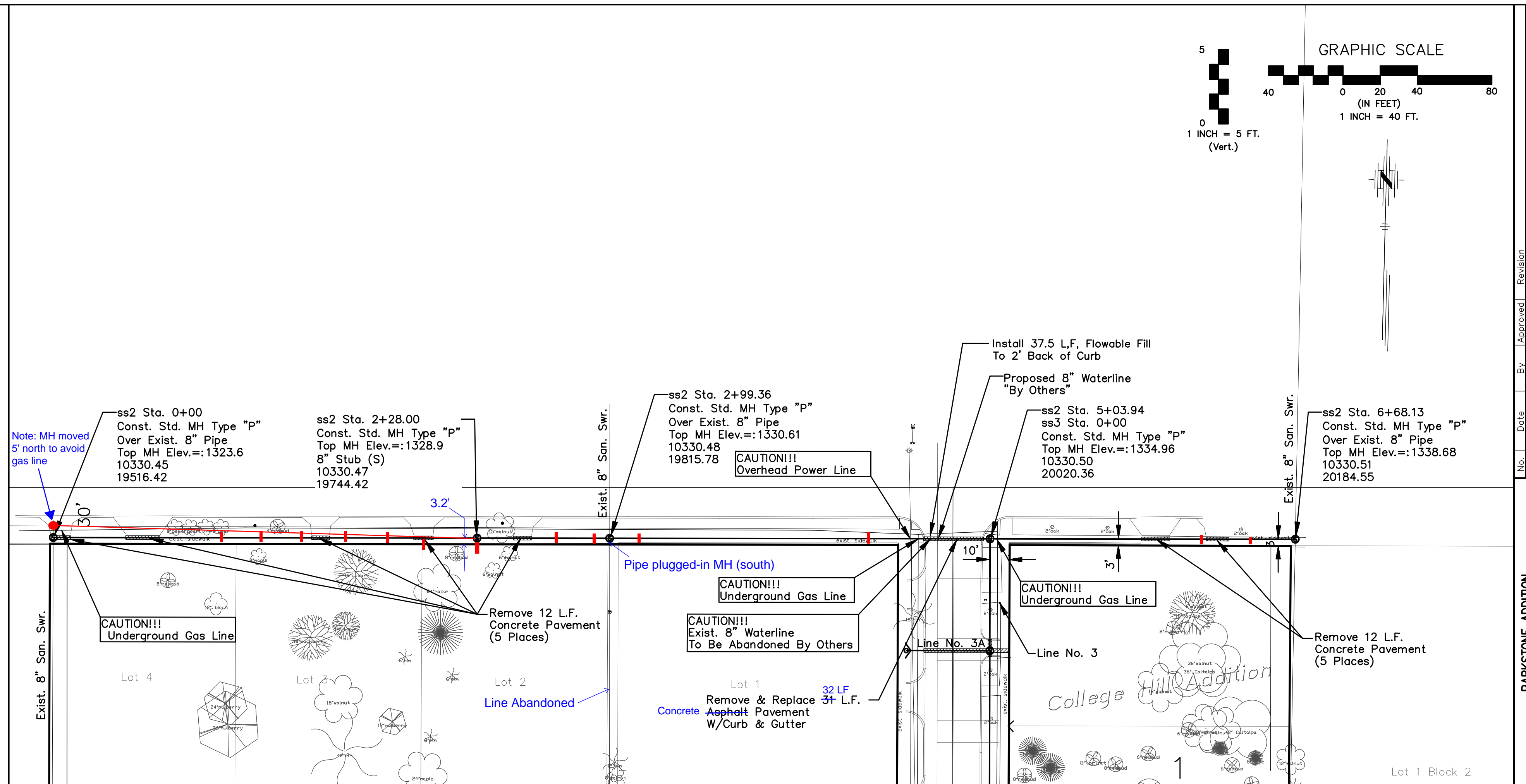


Note:
Contractor to Field Verify Location and Depth of All Utilities Prior to Construction and Report Findings Project Engineer



PARKSTONE ADDITION
 RELOCATION OF PART OF DISTRICT B, SAN. SEWER# 12
 SANITARY SEWER LINE NO. 1A & 2
 CITY OF WICHITA, KANSAS
 JAMES L. ARMOUR, P.E. - CITY ENGINEER
 Proj. No. 468-84376 O.C.A.# 744247

POE & ASSOCIATES, INC.
 CONSULTING ENGINEERS
 5940 E. Central, Suite 200 - Wichita, KS 67208-4242
 Phone 316/685-4114 - FAX 316/685-4444

FINAL
 Designed By: S. Schmidt
 Drawn By: M. Tucker
 Sheet No.: 1879
 Date: August 2007

3 of 14